

# MOUNTING DIAGRAM

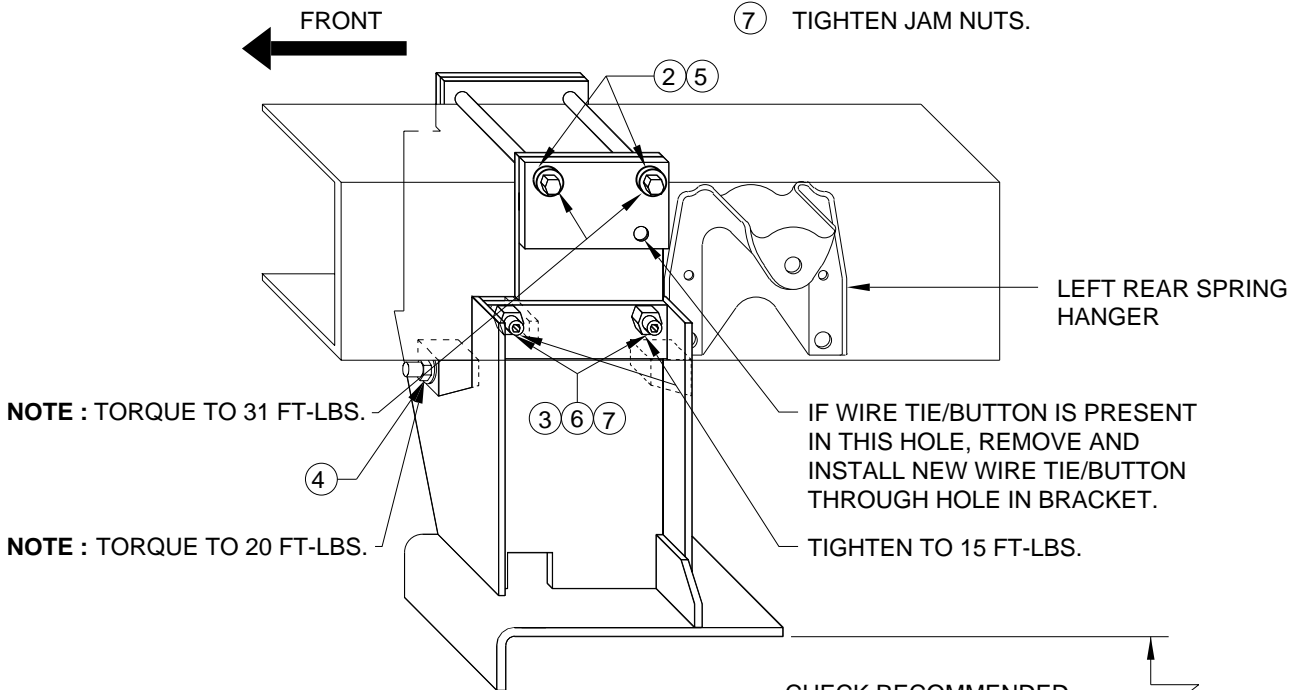
## CHEVY P30 FRONT ENGINE: REAR BRACKET

### SPRING UNDER SPRING HANGER

**BEGINNING IN 1993 ON CHASSIS WITH  
14,500, 14,800 , AND 16,000 GVWR**

### NOTE: MUST FOLLOW ASSEMBLY SEQUENCE

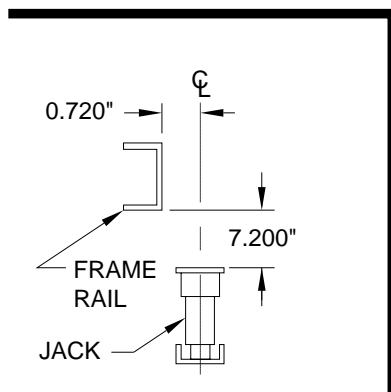
- |  |  |
|--|--|
| <p>① PLACE BRACKET ON FRAME. BEHIND REAR AXLE AND AGAINST FRONT OF SPRING HANGER.</p> <p>② INSTALL (2) 3/8 X 1-1/4 UPPER BOLTS &amp; STARWASHER (FINGER TIGHT).</p> <p>③ INSTALL (2) 3/8 X 1-1/4 SET SCREWS &amp; JAM NUTS (FINGER TIGHT).</p> | <p>④ INSTALL WEDGE ASSEMBLY &amp; TIGHTEN BOLT. THE DRAW BOLT SHOULD BE OUTBOARD UNDER WEB OF FRAME. BEVEL OF WEDGES GOES DOWN TOWARD BRACKET. TORQUE TO <u>20 FOOT POUNDS.</u></p> <p>⑤ TORQUE UPPER 3/8 X 4-1/4 BOLTS TO <u>31 FOOT POUNDS.</u></p> <p>⑥ TIGHTEN 3/8 X 1-1/4 SET SCREWS TO <u>15 FOOT POUNDS.</u></p> <p>⑦ TIGHTEN JAM NUTS.</p> |
|--|--|



**CAUTION:** FOLLOW CAUTIONS IN OPERATOR AND INSTALLATION MANUALS CONCERNING WORKING UNDER COACHES.

CHECK RECOMMENDED MOUNTING HEIGHT OF JACK BEING USED.

**NOTE :** EXHAUST PIPE CANNOT COME OUT BEHIND REAR AXLE FOR USE OF THIS BRACKET HAVE COACH OWNER TAKE COACH TO A PROFESSIONAL MUFFLER SHOP.



**AP0216 BRKT. KIT CHEVY REAR  
INVERTED SPRING HANGER**  
 (1) AP0160 BRACKET LR  
 (1) AP0170 BRACKET RR  
 (1) AP0214 HARDWARE KIT  
 (2) AP0176 WEDGE ASSY.