

Pivot Bracket/Cross Tie Kit & 9,000# Cylinder Kit: Straight-Acting Jacks

Application: For mounting Straight-Acting Jacks on the REAR OF CHEVY P30 chassis with a GVWR BETWEEN 14,800# AND 16,500# and the REAR OF WORKHORSE P chassis with a GVWR BETWEEN 14,800# AND 17,000# Stock rear single axle.

Mfr. #: AP21772 Pivot Bracket/Cross Tie Kit

Includes: 2 - AP21093 Pivot Bracket
1 - AP21095 Cross Tie
1 - AP16184 Hardware Kit 7/16"
1 - AP21931 Hardware Kit 3/8" x 1.5"

M.S.R.P.: See Item Price Listing

Mfr. #: AP16237 Cylinder Kit

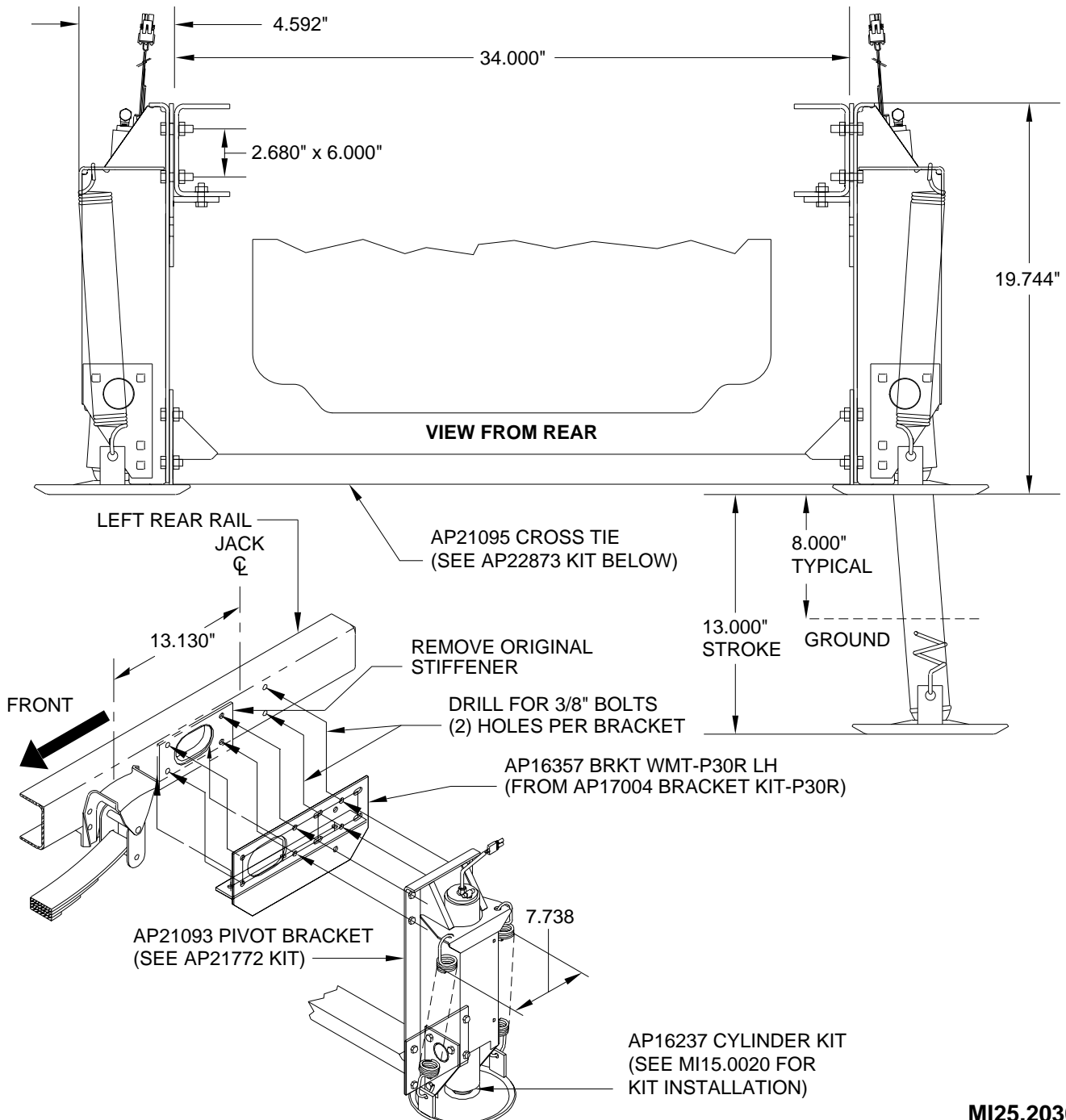
Includes: 2 - AP15900 Cylinder 9,000 x 13
4 - Springs
2 - Feet
4 - Retaining Plates with Bolts

M.S.R.P.: See Item Price Listing

Mfr. #: AP17004 Bracket Kit P30 Rear

Includes: 1 - AP16356 Bracket Weldment P30 Rear Right Hand
1 - AP16357 Bracket Weldment P30 Rear Left Hand
1 - AP17006 Hardware Kit P30 Rear

M.S.R.P.: See Item Price Listing



CAUTION: Follow CAUTIONS in Operator's and Installation Manuals concerning working under vehicles.

MI25.2030
09JAN01