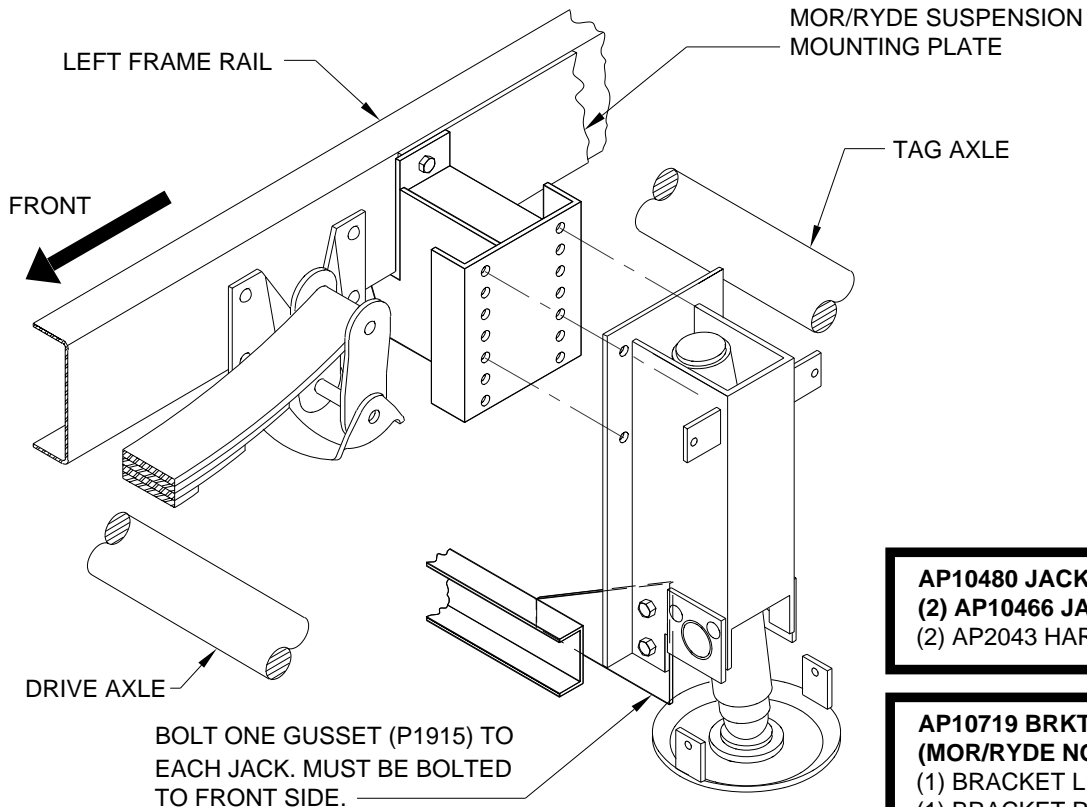
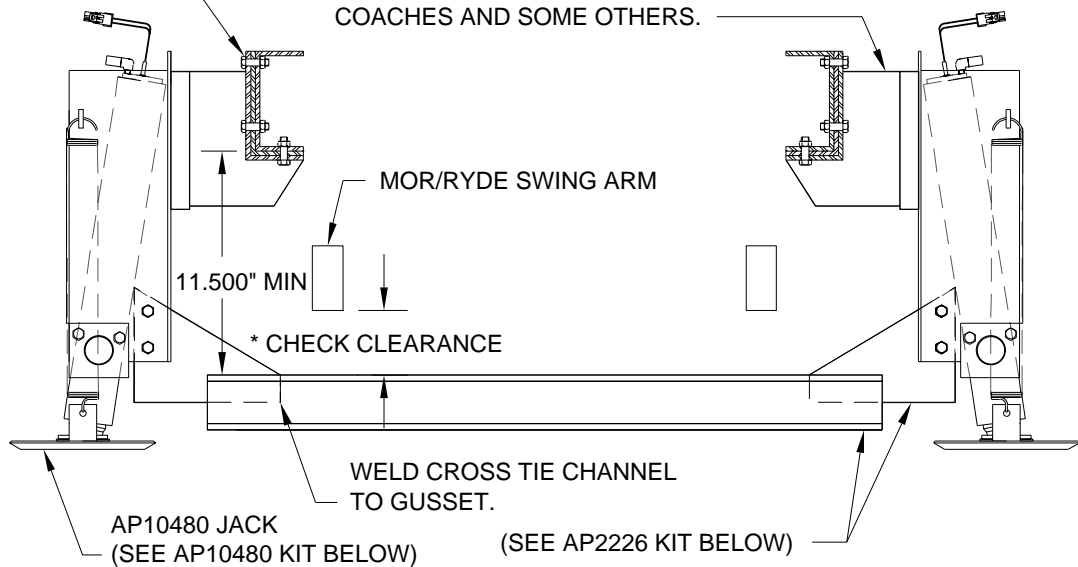


MOUNTING DIAGRAM FOR STRAIGHT-ACTING JACKS FORD F53 1997 AND OLDER WITH MOR/RYDE "ADD ON" TAG AXLE STARTING 1994 OR 95

REUSE EXISTING BOLTS. TORQUE TO 50 FT-LBS.

AP10719 BRACKET KIT MOR/RYDE STRAIGHT-ACTING JACK WILL BE EXISTING ON MOST FLEETWOOD COACHES AND SOME OTHERS.



AP10480 JACK KIT
(2) AP10466 JACK 9000 X 13"
(2) AP2043 HARDWARE KIT

AP10719 BRKT. KIT (MOR/RYDE NO. A012-001)
(1) BRACKET LR
(1) BRACKET RR

AP2226 CROSS TIE KIT 41.000"
(1) P2227 CHANNEL 41.000"
(2) P1915 GUSSET
(1) AP2042 HARDWARE KIT

* CLEARANCE BETWEEN TAG AXLE SWING ARM AND CROSS TIE SHOULD BE CHECKED WITH TAG AXLE AT FULL EXTENSION.

CAUTION: FOLLOW CAUTIONS IN OPERATOR'S AND INSTALLATION MANUALS CONCERNING WORKING UNDER VEHICLES.