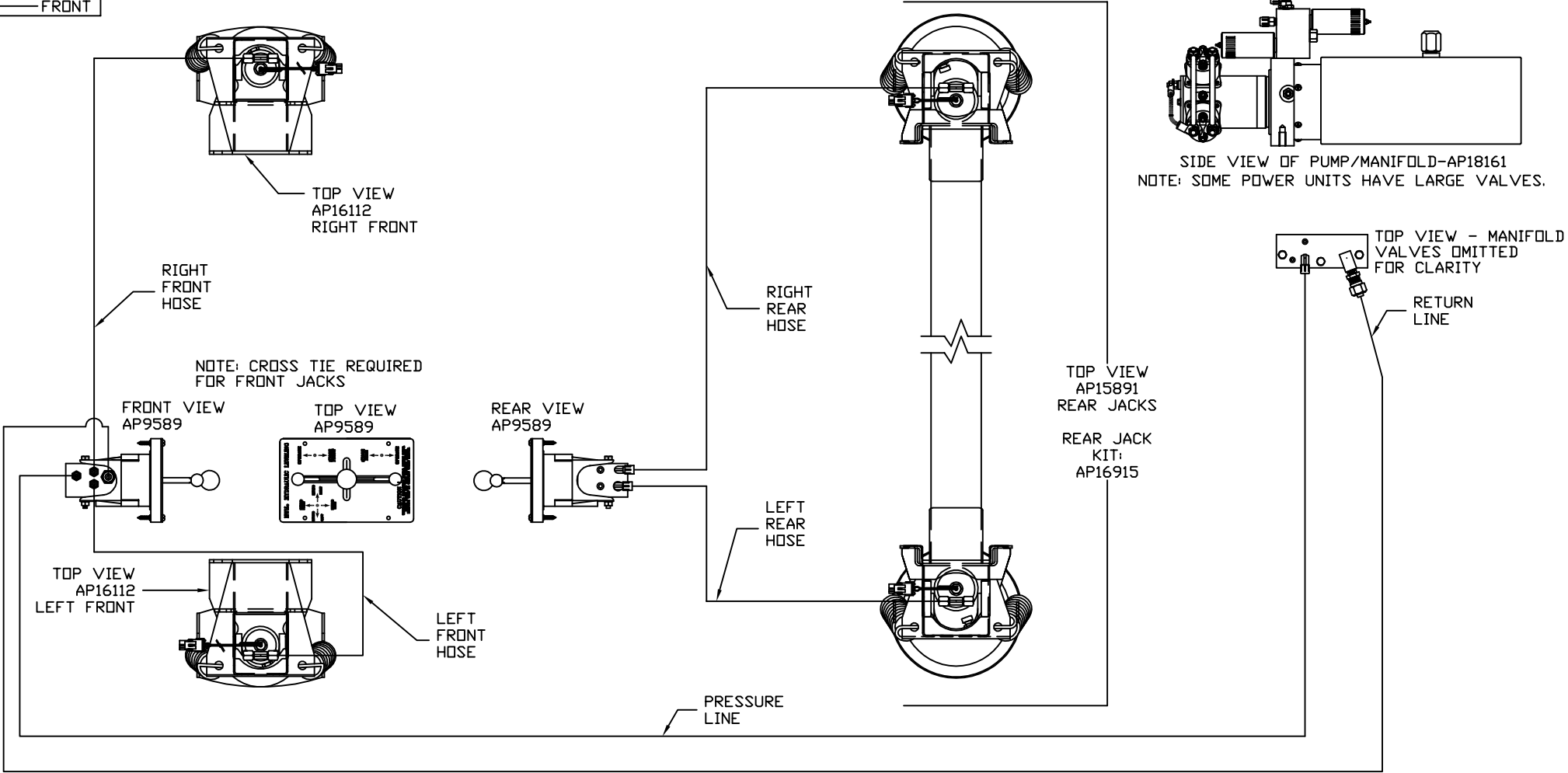


ORIENTATION
← FRONT



MODEL	HOSE KIT	LF HOSE	RF HOSE	RR HOSE	LR HOSE	PRESSURE	RETURN
G37G	AP10164	AP4073	AP7099	AP5216	AP4904	AP4164	P10165
L35C	AP10164	AP4073	AP7099	AP5216	AP4904	AP4164	P10165
L36L	AP10164	AP4073	AP7099	AP5216	AP4904	AP4164	P10165

LEVELING SYSTEM: AP18133

NO.	DATE	REVISION

HWH I-80 EXIT 267 SOUTH
RT 1 MOSCOW, IOWA 52760

SCALE 1:6 DATE 27JUL05 DRAWN BY .

HYD CONN DIAGRAM

THE INFORMATION DISCLOSED ON THIS DRAWING IS CONFIDENTIAL AND MUST NOT BE DISCLOSED OR USED IN ANY MANNER WHICH WILL BE DETRIMENTAL TO THE HWH CORPORATION

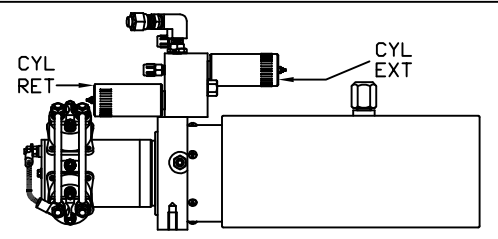
WINNEBAGO

DRAWING NUMBER
MP69011 A/B

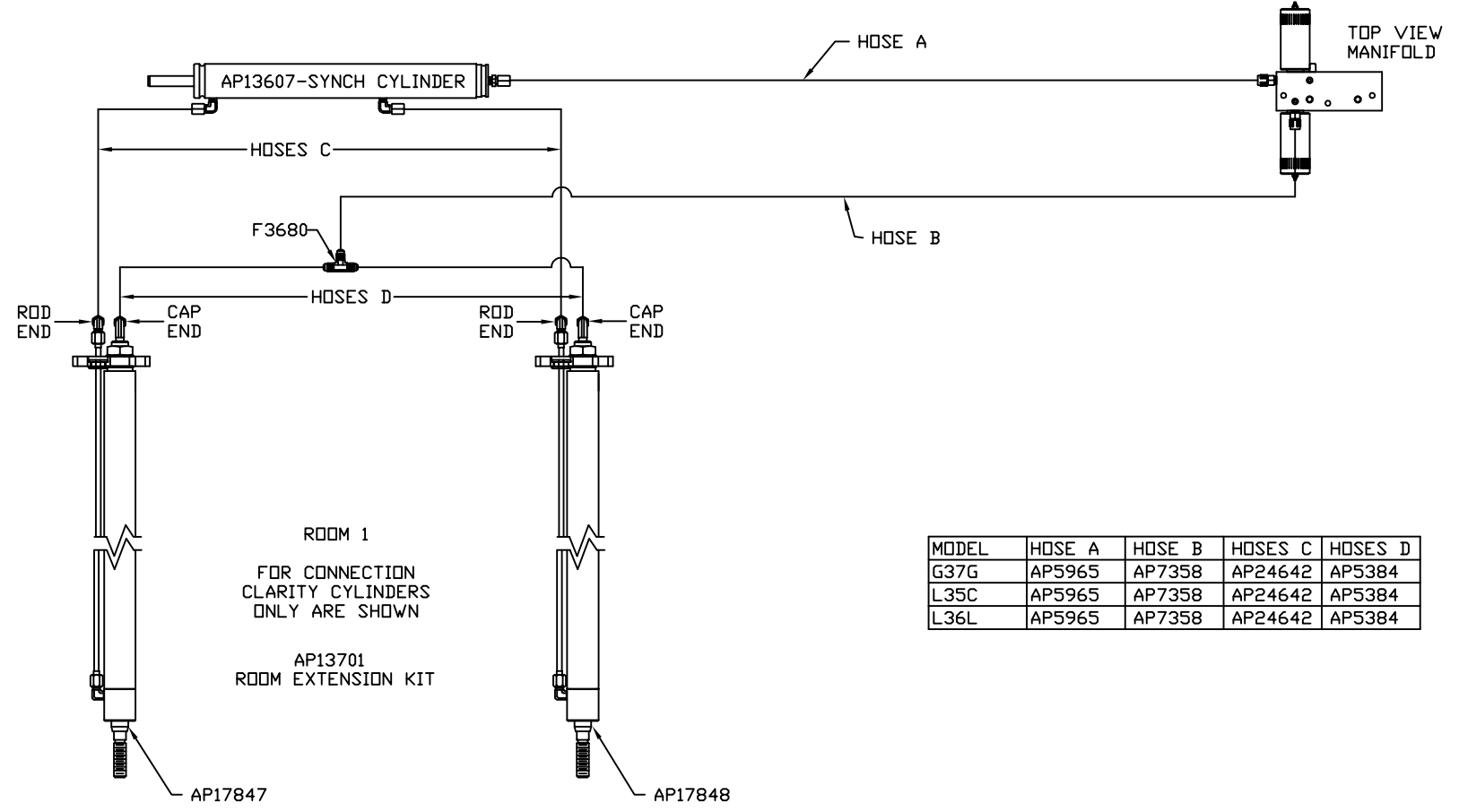
ORIENTATION
 ← FRONT

NOTE: HOSES C MUST BE HIGH PRESSURE HOSES OF EQUAL LENGTH AND DIAMETER

NOTE: HOSES D MUST BE EQUAL LENGTH AND DIAMETER



SIDE VIEW OF PUMP/MANIFOLD-AP18161
 NOTE: SOME POWER UNITS HAVE LARGE VALVES.



ROOM 1
 FOR CONNECTION CLARITY CYLINDERS ONLY ARE SHOWN
 AP13701
 ROOM EXTENSION KIT

MODEL	HOSE A	HOSE B	HOSES C	HOSES D
G37G	AP5965	AP7358	AP24642	AP5384
L35C	AP5965	AP7358	AP24642	AP5384
L36L	AP5965	AP7358	AP24642	AP5384