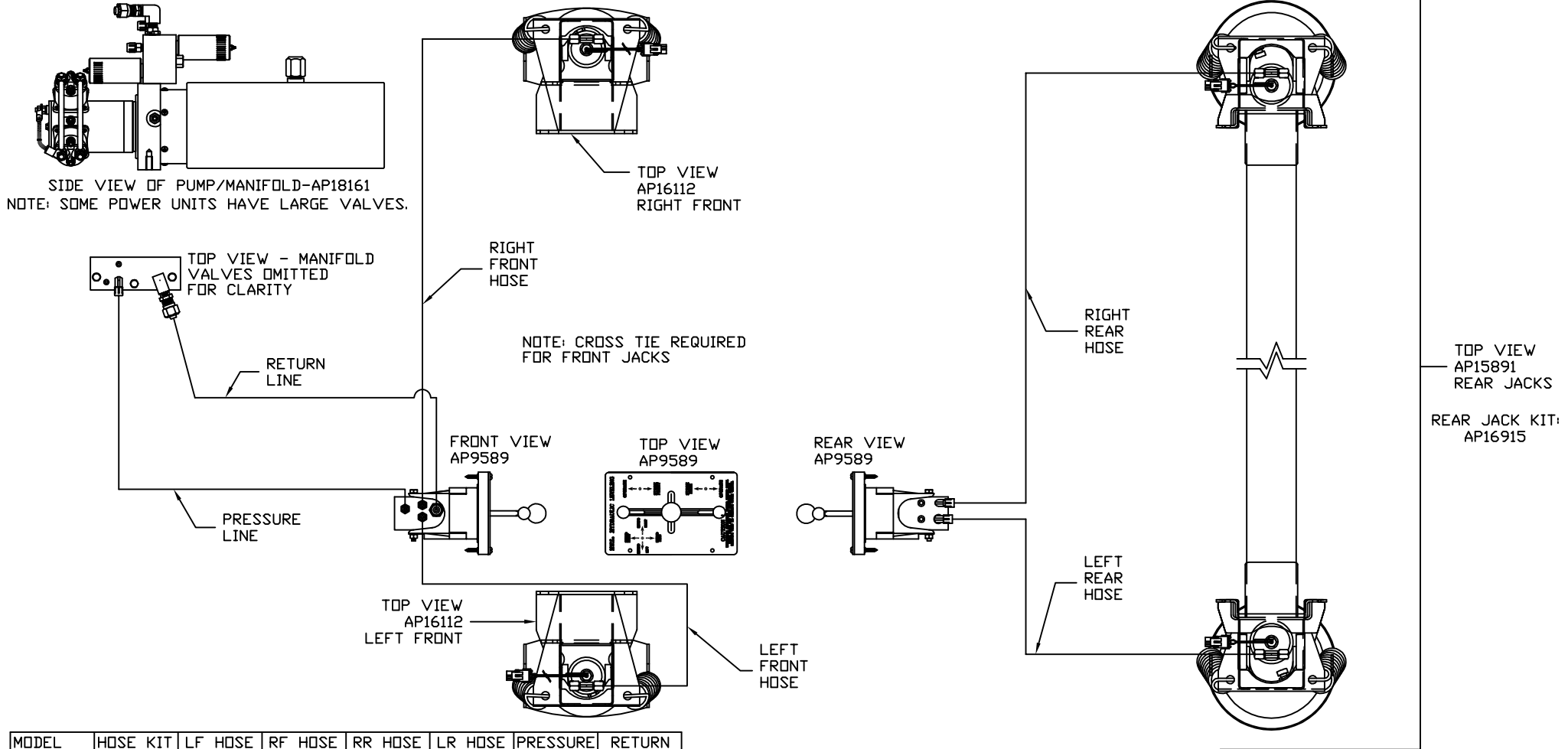


ORIENTATION
← FRONT



MODEL	HOSE KIT	LF HOSE	RF HOSE	RR HOSE	LR HOSE	PRESSURE	RETURN
F35C	*AP0012	AP4073	AP7099	AP4311	AP2464	AP4074	P7335
G33B	AP0012	AP4073	AP7099	AP4311	AP2464	AP4074	P7335
G35C	AP0012	AP4073	AP7099	AP4311	AP2464	AP4074	P7335
G35S	AP0012	AP4073	AP7099	AP4311	AP2464	AP4074	P7335
L33B	AP0012	AP4073	AP7099	AP4311	AP2464	AP4074	P7335
F30W	AP0013	AP4073	AP7099	AP5561	AP4904	AP4074	P7335
F33V	AP0013	AP4073	AP7099	AP5561	AP4904	AP4074	P7335

* AP0013 FOR THE 2001 PRODUCTION MODEL

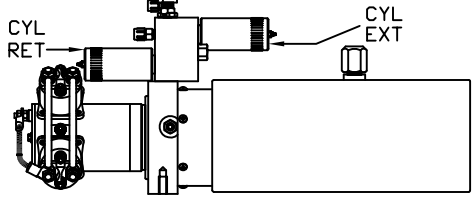
LEVELING SYSTEM: AP18137

		HWH		I-80 EXIT 267 SOUTH RT 1 MOSCOW, IOWA 52760	
		SCALE 1:6	DATE 26JUL05	DRAWN BY .	
		HYD CONN DIAGRAM			
NO.	DATE	REVISION			
		WINNEBAGO		DRAWING NUMBER MP69012 A/C	

THE INFORMATION DISCLOSED ON THIS DRAWING IS CONFIDENTIAL AND MUST NOT BE DISCLOSED OR USED IN ANY MANNER WHICH WILL BE DETRIMENTAL TO THE HWH CORPORATION

ORIENTATION

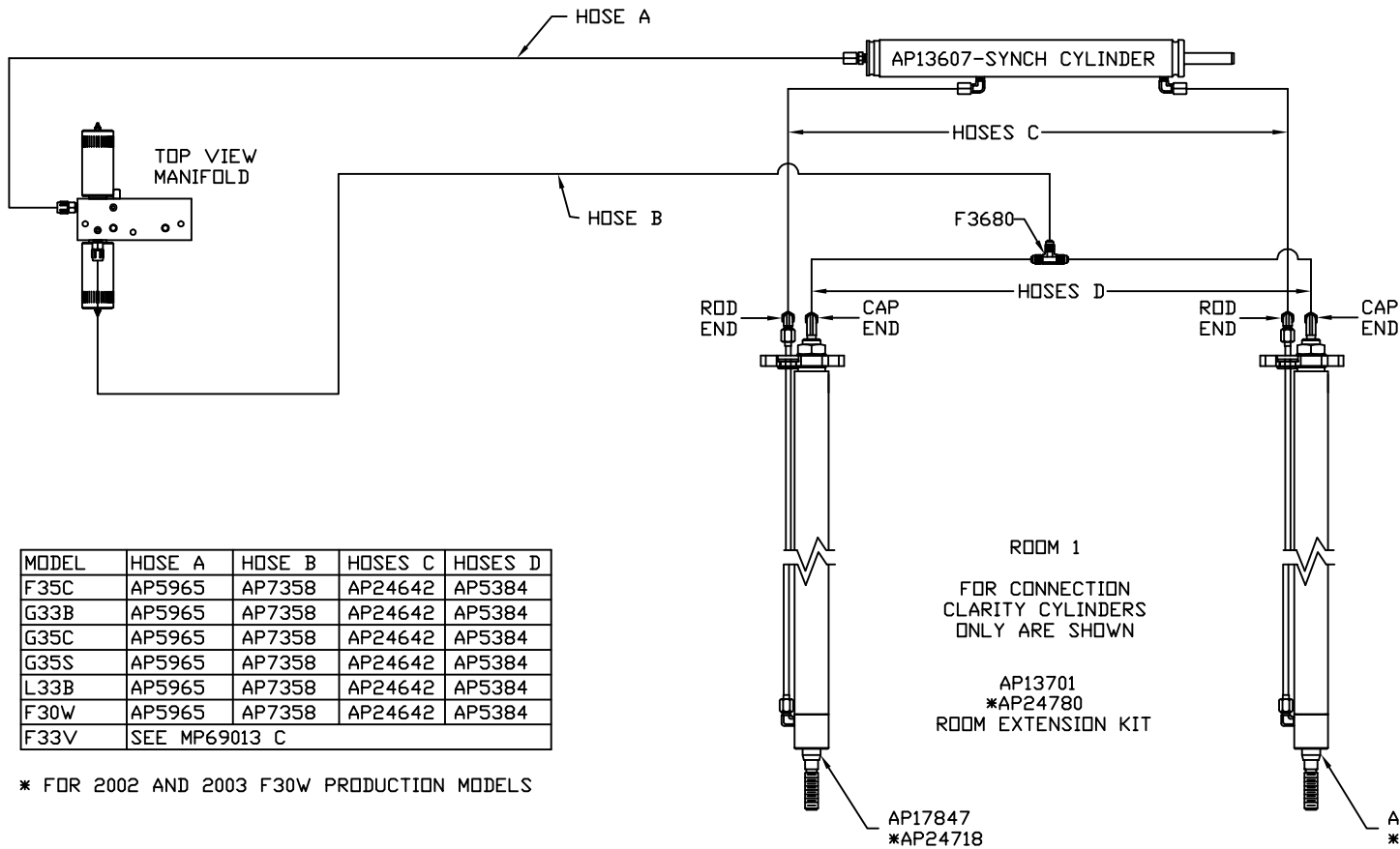
← FRONT



SIDE VIEW OF PUMP/MANIFOLD-AP18161
NOTE: SOME POWER UNITS HAVE LARGE VALVES.

NOTE: HOSES C MUST BE HIGH PRESSURE HOSES OF EQUAL LENGTH AND DIAMETER

NOTE: HOSES D MUST BE EQUAL LENGTH AND DIAMETER

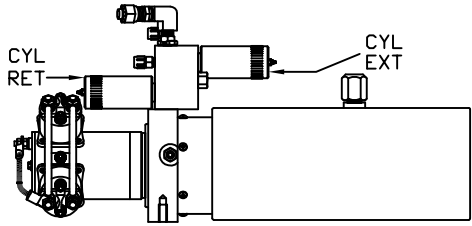


MODEL	HOSE A	HOSE B	HOSES C	HOSES D
F35C	AP5965	AP7358	AP24642	AP5384
G33B	AP5965	AP7358	AP24642	AP5384
G35C	AP5965	AP7358	AP24642	AP5384
G35S	AP5965	AP7358	AP24642	AP5384
L33B	AP5965	AP7358	AP24642	AP5384
F30W	AP5965	AP7358	AP24642	AP5384
F33V	SEE MP69013 C			

* FOR 2002 AND 2003 F30W PRODUCTION MODELS

ORIENTATION

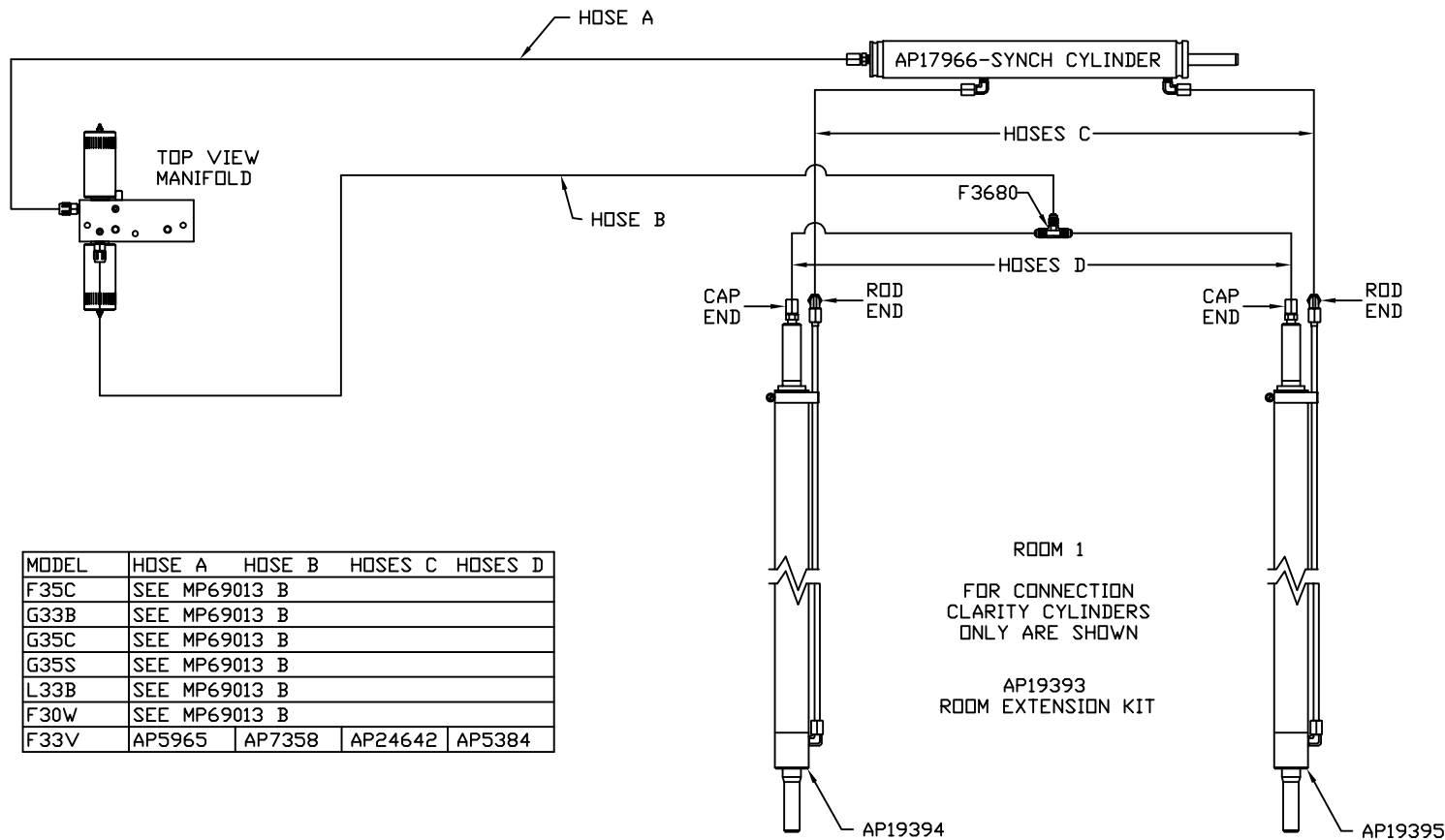
← FRONT



SIDE VIEW OF PUMP/MANIFOLD-AP18161
NOTE: SOME POWER UNITS HAVE LARGE VALVES.

NOTE: HOSES C MUST BE HIGH PRESSURE HOSES OF EQUAL LENGTH AND DIAMETER

NOTE: HOSES D MUST BE EQUAL LENGTH AND DIAMETER



MODEL	HOSE A	HOSE B	HOSES C	HOSES D
F35C	SEE MP69013 B			
G33B	SEE MP69013 B			
G35C	SEE MP69013 B			
G35S	SEE MP69013 B			
L33B	SEE MP69013 B			
F30W	SEE MP69013 B			
F33V	AP5965	AP7358	AP24642	AP5384

ROOM 1
FOR CONNECTION
CLARITY CYLINDERS
ONLY ARE SHOWN

AP19393
ROOM EXTENSION KIT