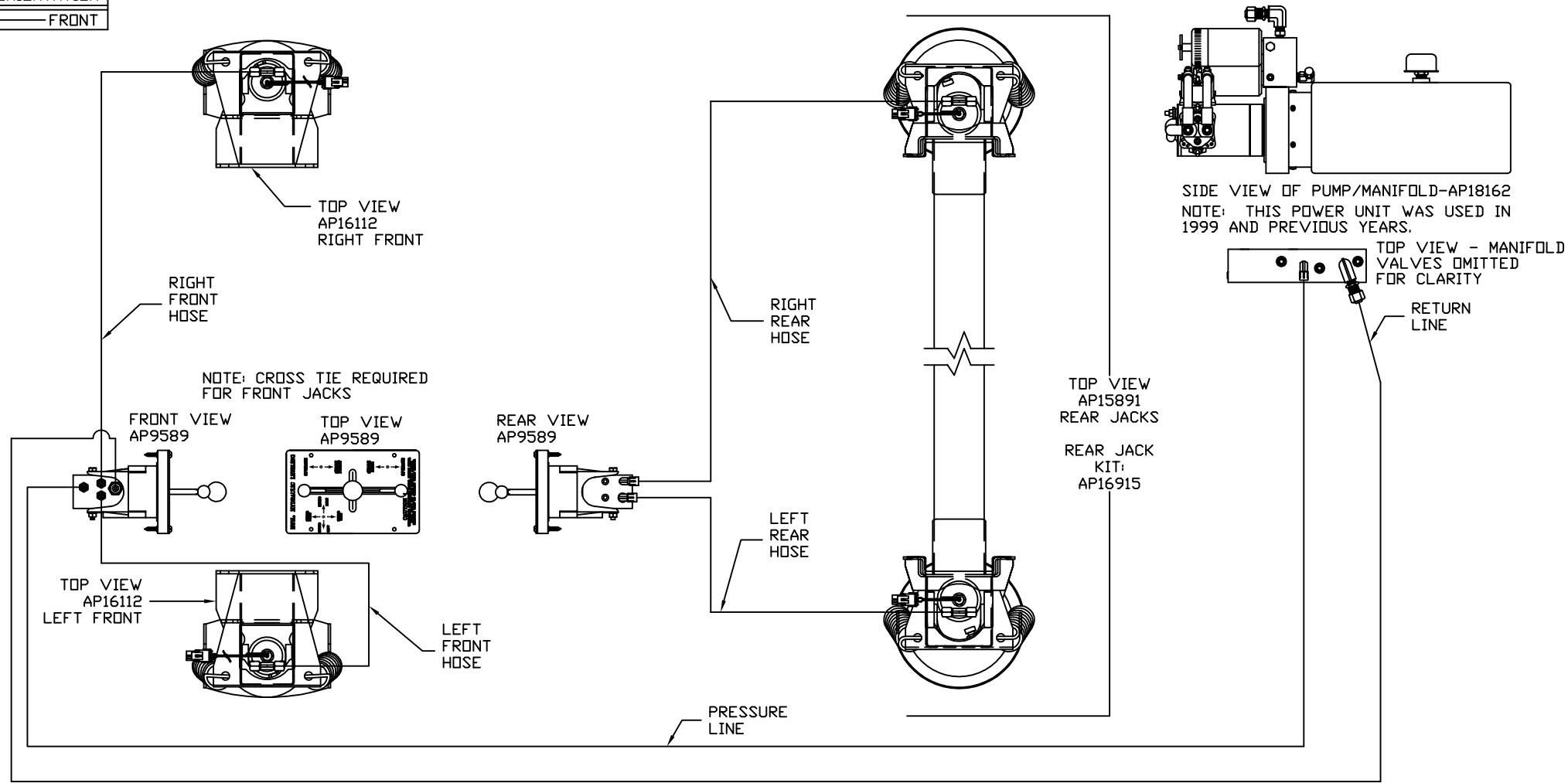


ORIENTATION  
← FRONT



MODEL	HOSE KIT	LF HOSE	RF HOSE	RR HOSE	LR HOSE	PRESSURE	RETURN
L34Y	AP10164	AP4073	AP7099	AP5216	AP4904	AP4164	P10165
L35U	AP10164	AP4073	AP7099	AP5216	AP4904	AP4164	P10165
F32V	SEE MP69014 B						
F34D	SEE MP69014 B						
F36M	SEE MP69014 B						
F30W	SEE MP69014 B						

LEVELING SYSTEM: AP18135

NO.	DATE	REVISION

HWH I-80 EXIT 267 SOUTH  
RT 1 MOSCOW, IOWA 52760

SCALE 1:6 DATE 01AUG05 DRAWN BY .

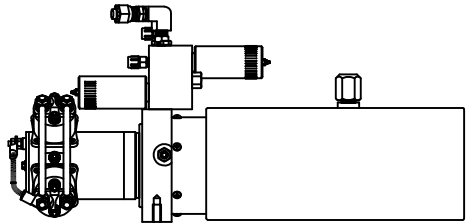
HYD CONN DIAGRAM

THE INFORMATION DISCLOSED ON THIS DRAWING IS CONFIDENTIAL AND MUST NOT BE DISCLOSED OR USED IN ANY MANNER WHICH WILL BE DETRIMENTAL TO THE HWH CORPORATION

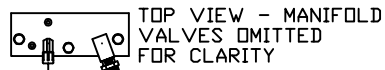
WINNEBAGO DRAWING NUMBER MP69014 A/E

ORIENTATION

← FRONT



SIDE VIEW OF PUMP/MANIFOLD-AP24456  
NOTE: SOME POWER UNITS HAVE LARGE VALVES.  
THIS POWER UNIT USED AFTER 2000.



TOP VIEW - MANIFOLD  
VALVES OMITTED  
FOR CLARITY

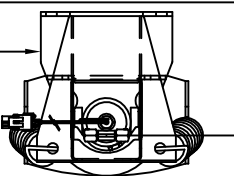
RETURN  
LINE

PRESSURE  
LINE

FRONT VIEW  
AP9589

TOP VIEW  
AP9589

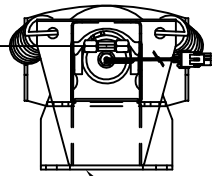
TOP VIEW  
AP16112  
LEFT FRONT



LEFT  
FRONT  
HOSE

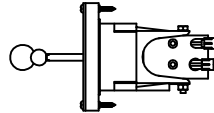
RIGHT  
FRONT  
HOSE

NOTE: CROSS TIE REQUIRED  
FOR FRONT JACKS



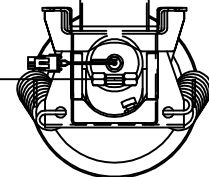
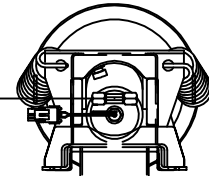
TOP VIEW  
AP16112  
RIGHT FRONT

REAR VIEW  
AP9589



RIGHT  
REAR  
HOSE

LEFT  
REAR  
HOSE



TOP VIEW  
AP15891  
REAR JACKS  
REAR JACK KIT:  
AP16915

MODEL	HOSE KIT	LF HOSE	RF HOSE	RR HOSE	LR HOSE	PRESSURE	RETURN
L34Y	SEE MP69014 A						
L35U	SEE MP69014 A						
F32V	AP0013	AP4073	AP7099	AP5561	AP4904	AP4074	P7335
F34D	AP0013	AP4073	AP7099	AP5561	AP4904	AP4074	P7335
F36M	AP0013	AP4073	AP7099	AP5561	AP4904	AP4074	P7335
F30W	AP0013	AP4073	AP7099	AP5561	AP4904	AP4074	P7335

**ORIENTATION**

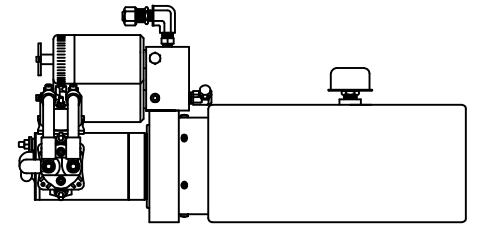
← FRONT

NOTE: HOSES C MUST BE HIGH PRESSURE HOSES OF EQUAL LENGTH AND DIAMETER

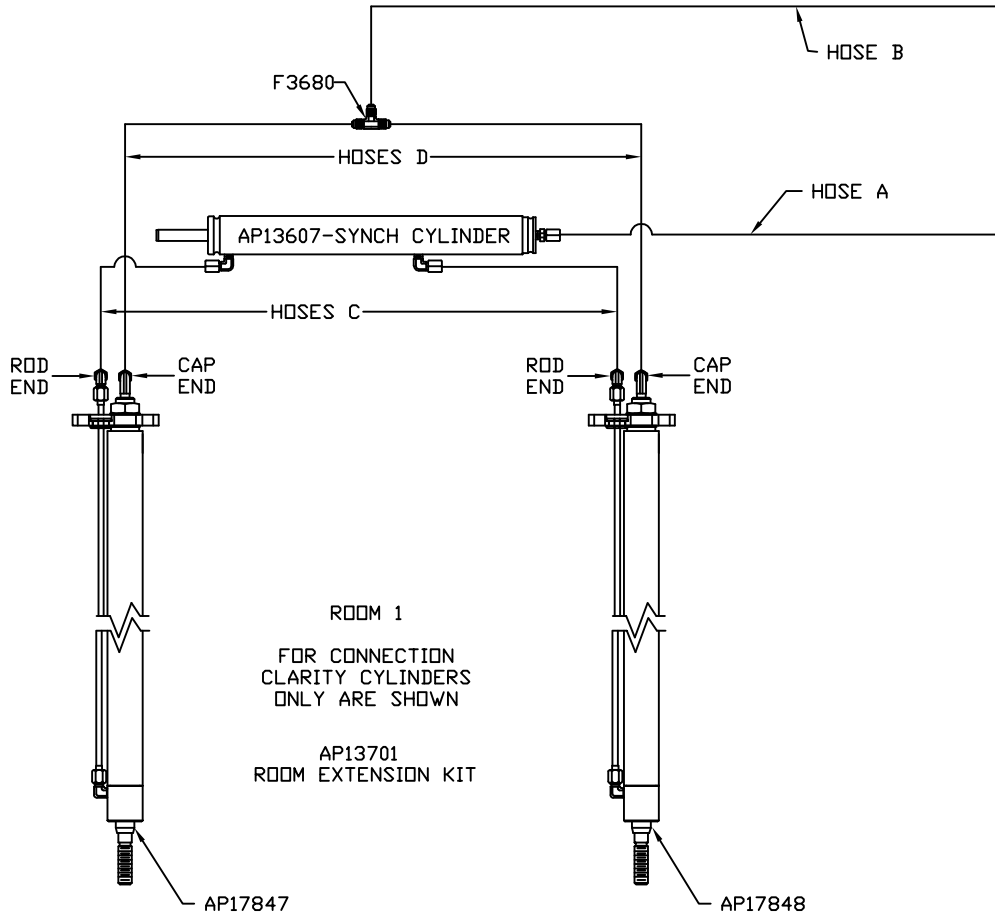
NOTE: HOSES D MUST BE EQUAL LENGTH AND DIAMETER

MODEL	HOSE A	HOSE B	HOSES C	HOSES D
L34Y	AP8985	AP2464	AP24642	AP5384
L35U	AP8985	AP2464	AP24642	AP5384
F32V	SEE MP69014 D			
F34D	SEE MP69014 D			
F36M	SEE MP69014 D			
F30W	SEE MP69014 E			

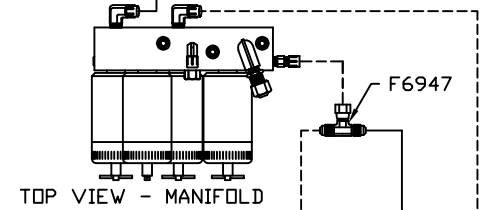
NOTE: THIS POWER UNIT WAS USED IN 1999 AND PREVIOUS YEARS.



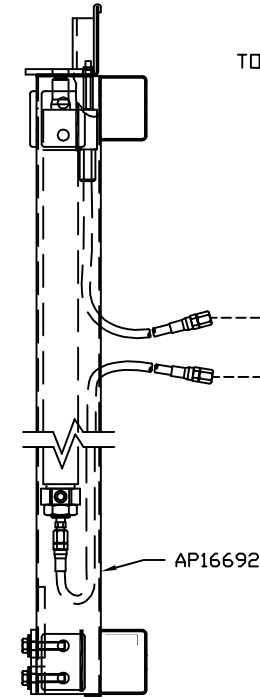
SIDE VIEW OF PUMP/MANIFOLD-AP18162



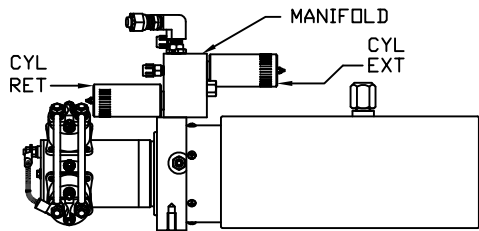
ROOM 2  
AP16160  
ROOM EXTENSION KIT



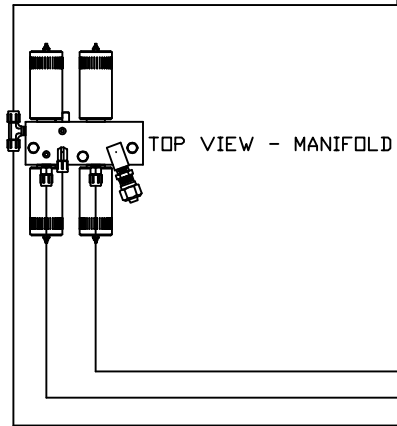
TOP VIEW - MANIFOLD



ORIENTATION  
← FRONT



SIDE VIEW OF PUMP/MANIFOLD-AP24456  
NOTE: SOME POWER UNITS HAVE LARGE VALVES.  
THIS POWER UNIT USED AFTER 2000.

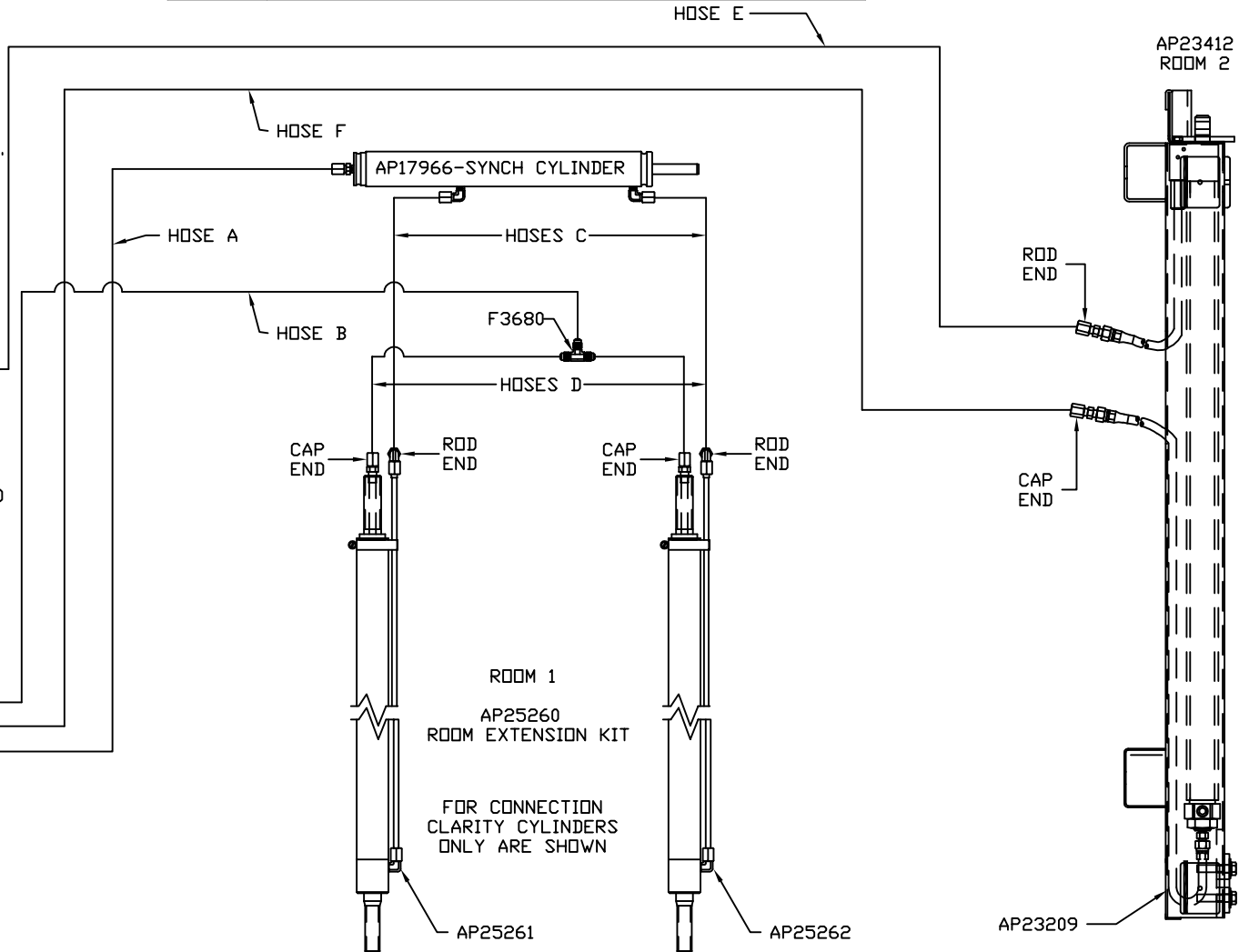


TOP VIEW - MANIFOLD

NOTE: HOSES C MUST BE HIGH  
PRESSURE HOSES OF EQUAL  
LENGTH AND DIAMETER

NOTE: HOSES D MUST BE  
EQUAL LENGTH AND DIAMETER

MODEL	HOSE A	HOSE B	HOSES C	HOSES D	HOSE E	HOSE F
L34Y	SEE MP69014 C					
L35U	SEE MP69014 C					
F32V	AP5965	AP7358	AP24642	AP5384	AP6117	AP4669
F34D	AP5965	AP7358	AP24642	AP5384	AP6117	AP4669
F36M	AP5965	AP7358	AP24642	AP5384	AP6117	AP4669
F30W	SEE MP69014 E					

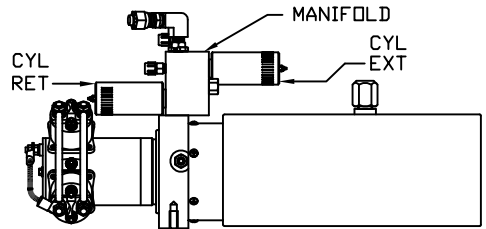


ROOM 1  
AP25260  
ROOM EXTENSION KIT

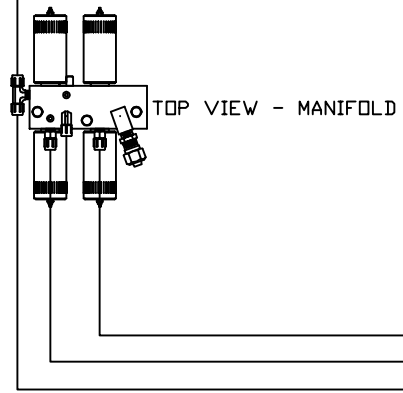
FOR CONNECTION  
CLARITY CYLINDERS  
ONLY ARE SHOWN

ORIENTATION  
← FRONT

MODEL	HOSE A	HOSE B	HOSES C	HOSES D	HOSE E	HOSE F
L34Y	SEE MP69014 C					
L35U	SEE MP69014 C					
F32V	SEE MP69014 D					
F34D	SEE MP69014 D					
F36M	SEE MP69014 D					
F30W	AP5965	AP7358	AP24642	AP5384	AP6117	AP4669



SIDE VIEW OF PUMP/MANIFOLD-AP24456  
NOTE: SOME POWER UNITS HAVE LARGE VALVES.  
THIS POWER UNIT USED AFTER 2000.



NOTE: HOSES C MUST BE HIGH PRESSURE HOSES OF EQUAL LENGTH AND DIAMETER

NOTE: HOSES D MUST BE EQUAL LENGTH AND DIAMETER

