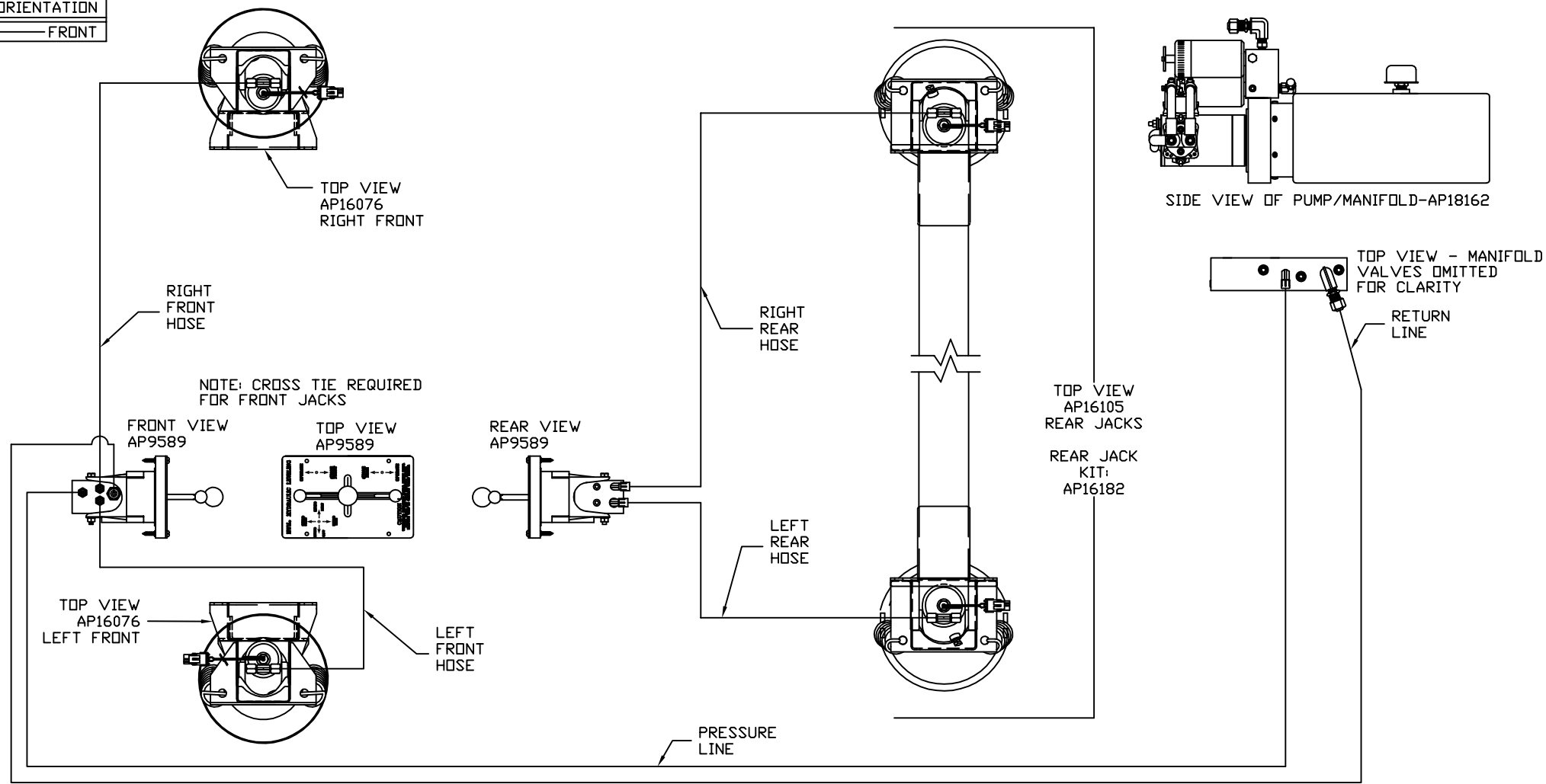


ORIENTATION  
← FRONT



MODEL	HOSE KIT	LF HOSE	RF HOSE	RR HOSE	LR HOSE	PRESSURE	RETURN
L34Y	AP10164	AP4073	AP7099	AP5216	AP4904	AP4164	P10165
L35U	AP10164	AP4073	AP7099	AP5216	AP4904	AP4164	P10165

LEVELING SYSTEM: AP18150

NO.	DATE	REVISION

HWH I-80 EXIT 267 SOUTH  
RT 1 MOSCOW, IOWA 52760  
SCALE 1:6 DATE 29JUL05 DRAWN BY .

HYD CONN DIAGRAM

THE INFORMATION DISCLOSED ON THIS DRAWING IS CONFIDENTIAL AND MUST NOT BE DISCLOSED OR USED IN ANY MANNER WHICH WILL BE DETRIMENTAL TO THE HWH CORPORATION

WINNEBAGO

DRAWING NUMBER  
MP69016 A/B

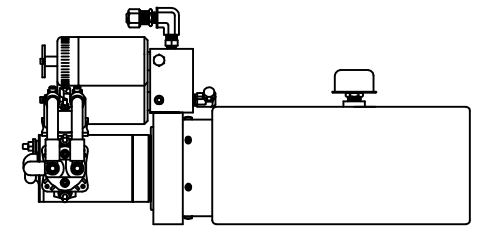
ORIENTATION

← FRONT

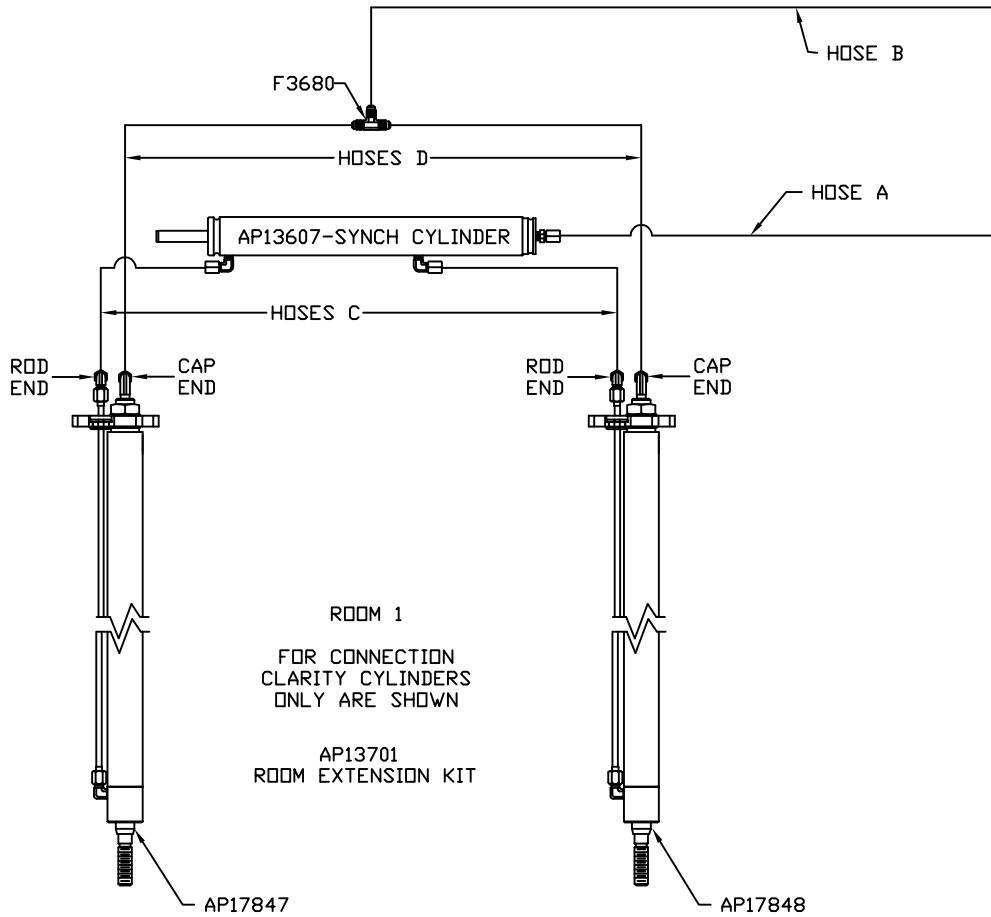
NOTE: HOSES C MUST BE HIGH PRESSURE HOSES OF EQUAL LENGTH AND DIAMETER

NOTE: HOSES D MUST BE EQUAL LENGTH AND DIAMETER

MODEL	HOSE A	HOSE B	HOSES C	HOSES D
L34Y	NO INFO AVAILABLE	NO INFO AVAILABLE	AP24642	AP5384
L35U	NO INFO AVAILABLE	NO INFO AVAILABLE	AP24642	AP5384



SIDE VIEW OF PUMP/MANIFOLD-AP18162



ROOM 2  
AP16160  
ROOM EXTENSION KIT

