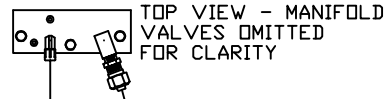
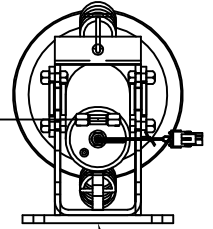
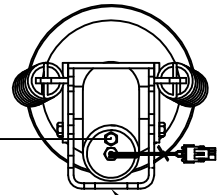
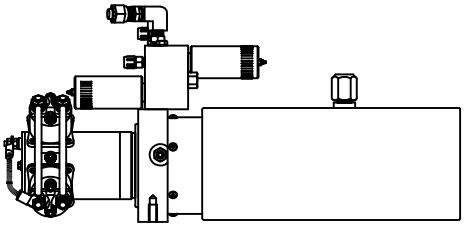


ORIENTATION
← FRONT



RIGHT
FRONT
HOSE

RETURN
LINE

PRESSURE
LINE

FRONT VIEW
AP9589

TOP VIEW
AP9589

REAR VIEW
AP9589

RIGHT
REAR
HOSE

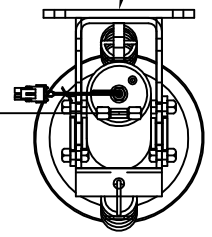
NOTE: CROSS TIE REQUIRED
FOR FRONT AND REAR JACKS

TOP VIEW
AP11804
LEFT REAR

LEFT
REAR
HOSE

TOP VIEW
AP18813
LEFT FRONT

LEFT
FRONT
HOSE



MODEL	HOSE KIT	LF HOSE	RF HOSE	RR HOSE	LR HOSE	PRESSURE	RETURN
G34V	AP2212	AP4073	AP7099	AP4904	AP4064	AP1412	P1413
L36L	AP14346	AP4073	AP7099	AP2464	AP5216	AP1412	P1413

LEVELING SYSTEM: AP18148

NO.	DATE	REVISION

HWH I-80 EXIT 267 SOUTH
RT 1 MOSCOW, IOWA 52760

SCALE 1:6 DATE 29JUL05 DRAWN BY .

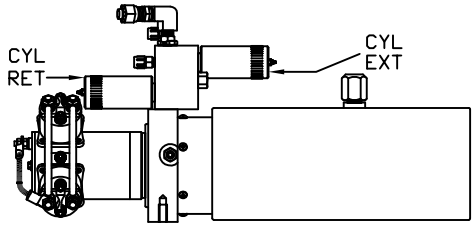
HYD CONN DIAGRAM

THE INFORMATION DISCLOSED ON THIS DRAWING IS CONFIDENTIAL AND MUST NOT BE DISCLOSED OR USED IN ANY MANNER WHICH WILL BE DETRIMENTAL TO THE HWH CORPORATION

WINNEBAGO DRAWING NUMBER
MP69019 A/C

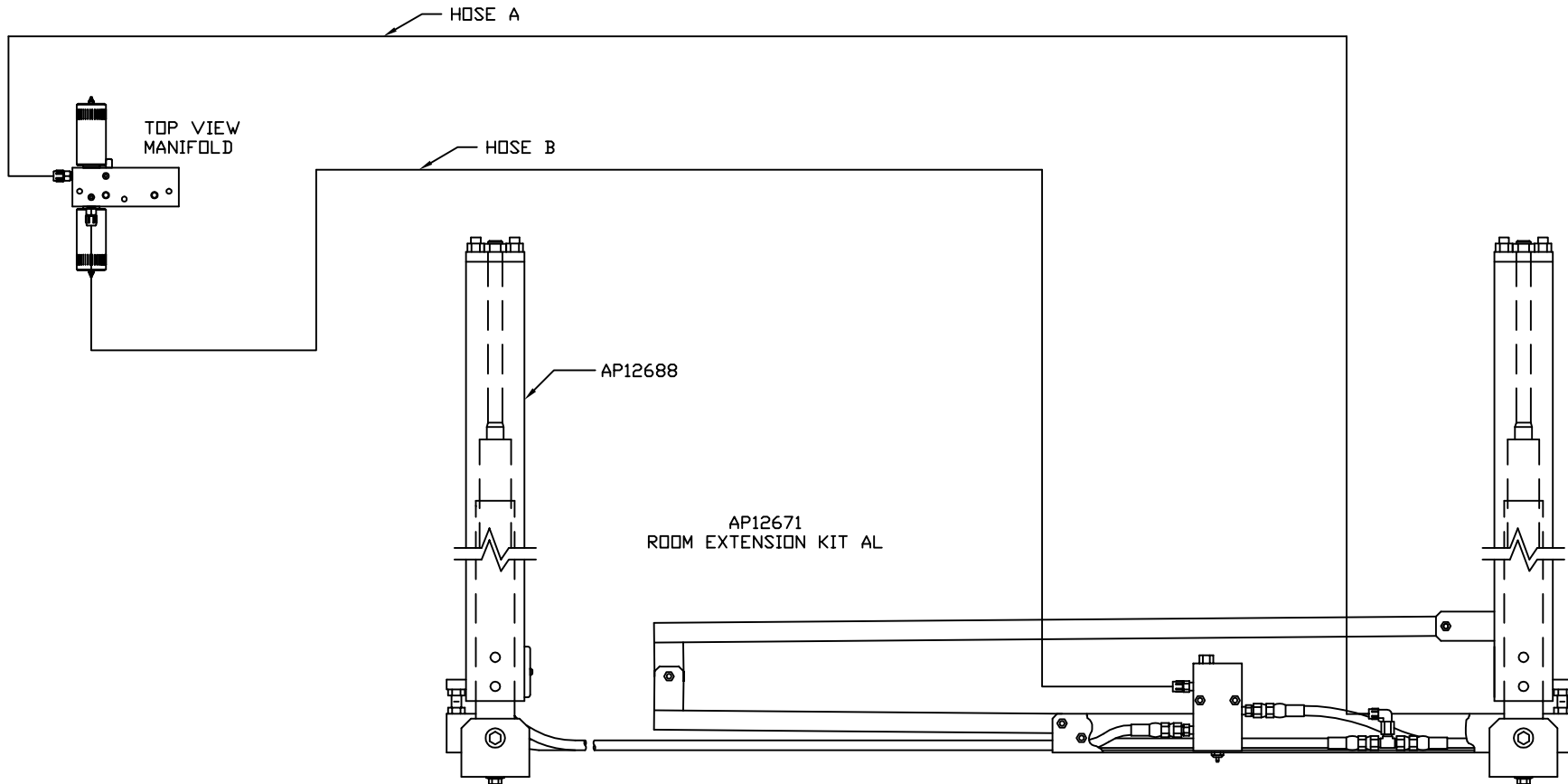
ORIENTATION

← FRONT



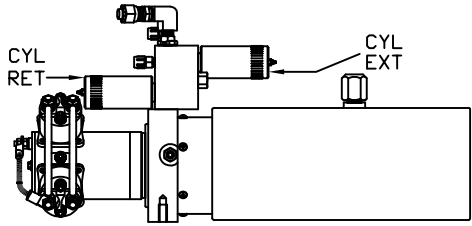
SIDE VIEW OF PUMP/MANIFOLD-AP18161
NOTE: SOME POWER UNITS HAVE LARGE VALVES.

MODEL	HOSE A	HOSE B
G34V	NO INFO AVAILABLE	
L36L	SEE MP69019 C	



ORIENTATION

← FRONT

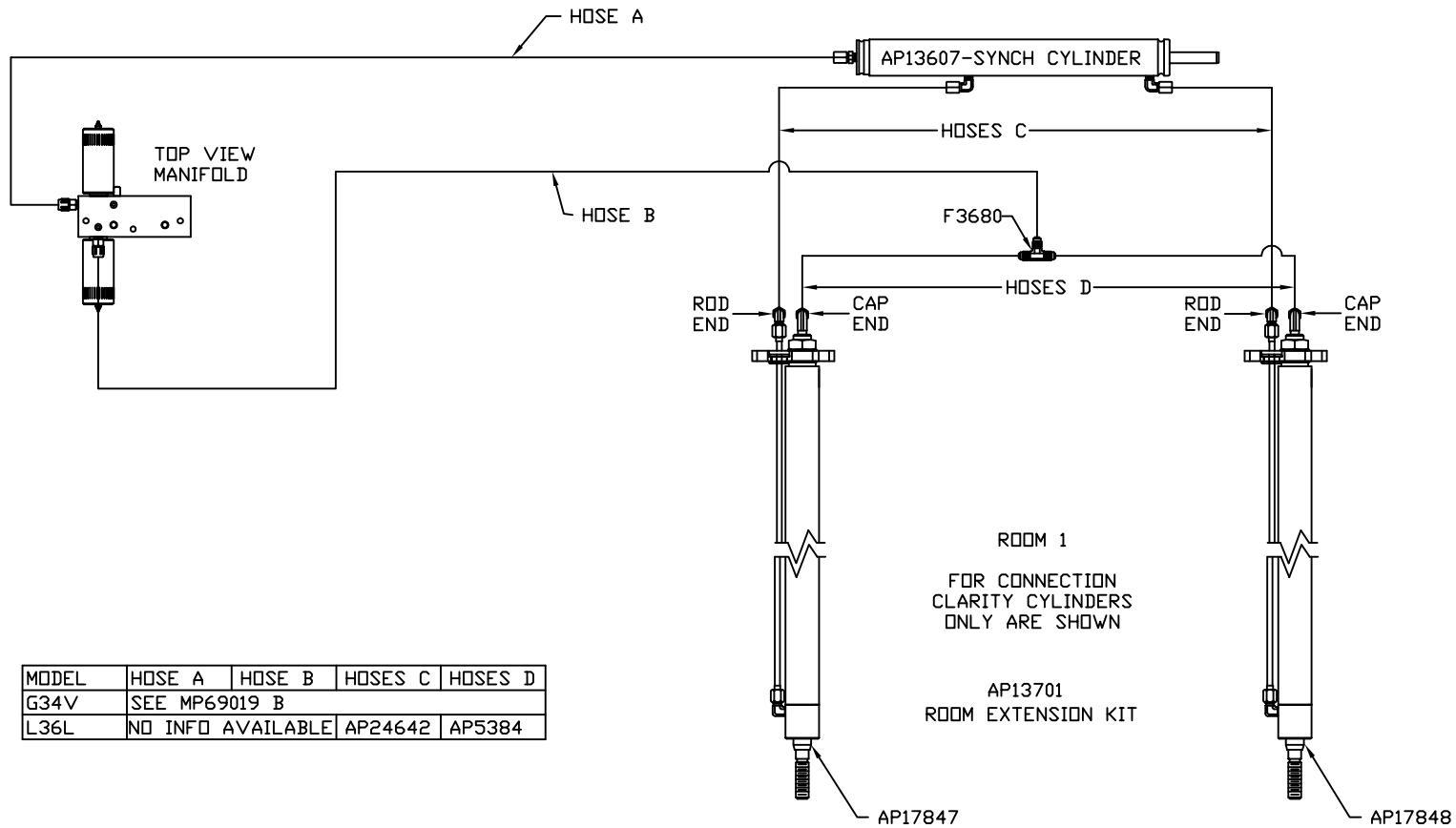


SIDE VIEW OF PUMP/MANIFOLD-AP18161

NOTE: SOME POWER UNITS HAVE LARGE VALVES.

NOTE: HOSES C MUST BE HIGH PRESSURE HOSES OF EQUAL LENGTH AND DIAMETER

NOTE: HOSES D MUST BE EQUAL LENGTH AND DIAMETER



MODEL	HOSE A	HOSE B	HOSES C	HOSES D
G34V	SEE MP69019 B			
L36L	NO INFO AVAILABLE	AP24642	AP5384	