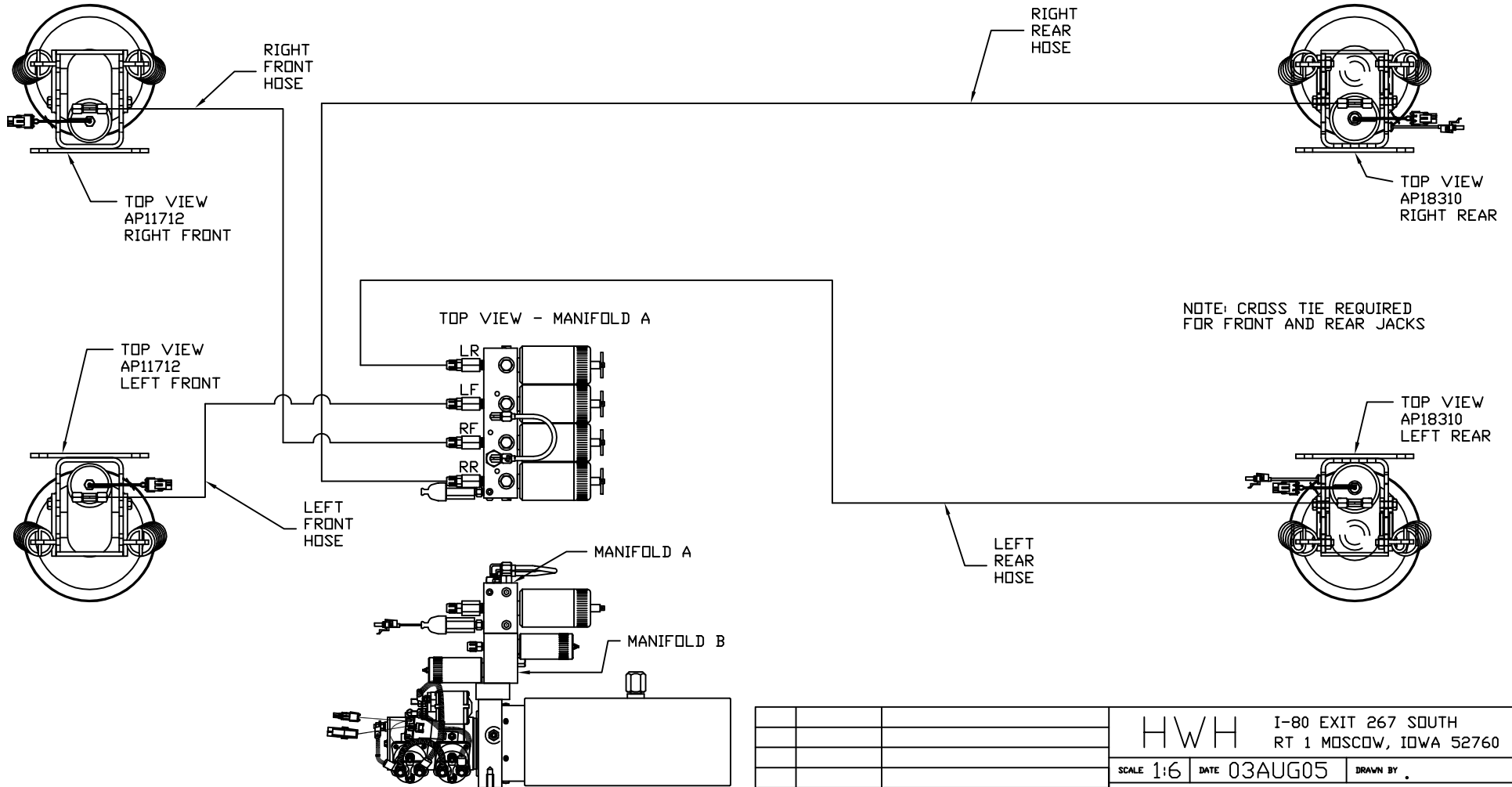


ORIENTATION
← FRONT

MODEL	HOSE KIT	LF HOSE	RF HOSE	RR HOSE	LR HOSE
Q38K	AP14867	AP4073	AP7099	AP4313	AP4391
Q40KD	AP14867	AP4073	AP7099	AP4313	AP4391
Q40J	AP14867	AP4073	AP7099	AP4313	AP4391



SIDE VIEW OF PUMP/MANIFOLD-AP18196
NOTE: SOME POWER UNITS HAVE LARGE VALVES.

LEVELING SYSTEM: AP18194

NO.	DATE	REVISION

HWH			I-80 EXIT 267 SOUTH RT 1 MOSCOW, IOWA 52760		
SCALE 1:6	DATE 03AUG05	DRAWN BY .			
HYD CONN DIAGRAM					
WINNEBAGO				DRAWING NUMBER MP69039 A/B	

THE INFORMATION DISCLOSED ON THIS DRAWING IS CONFIDENTIAL AND MUST NOT BE DISCLOSED OR USED IN ANY MANNER WHICH WILL BE DETRIMENTAL TO THE HWH CORPORATION

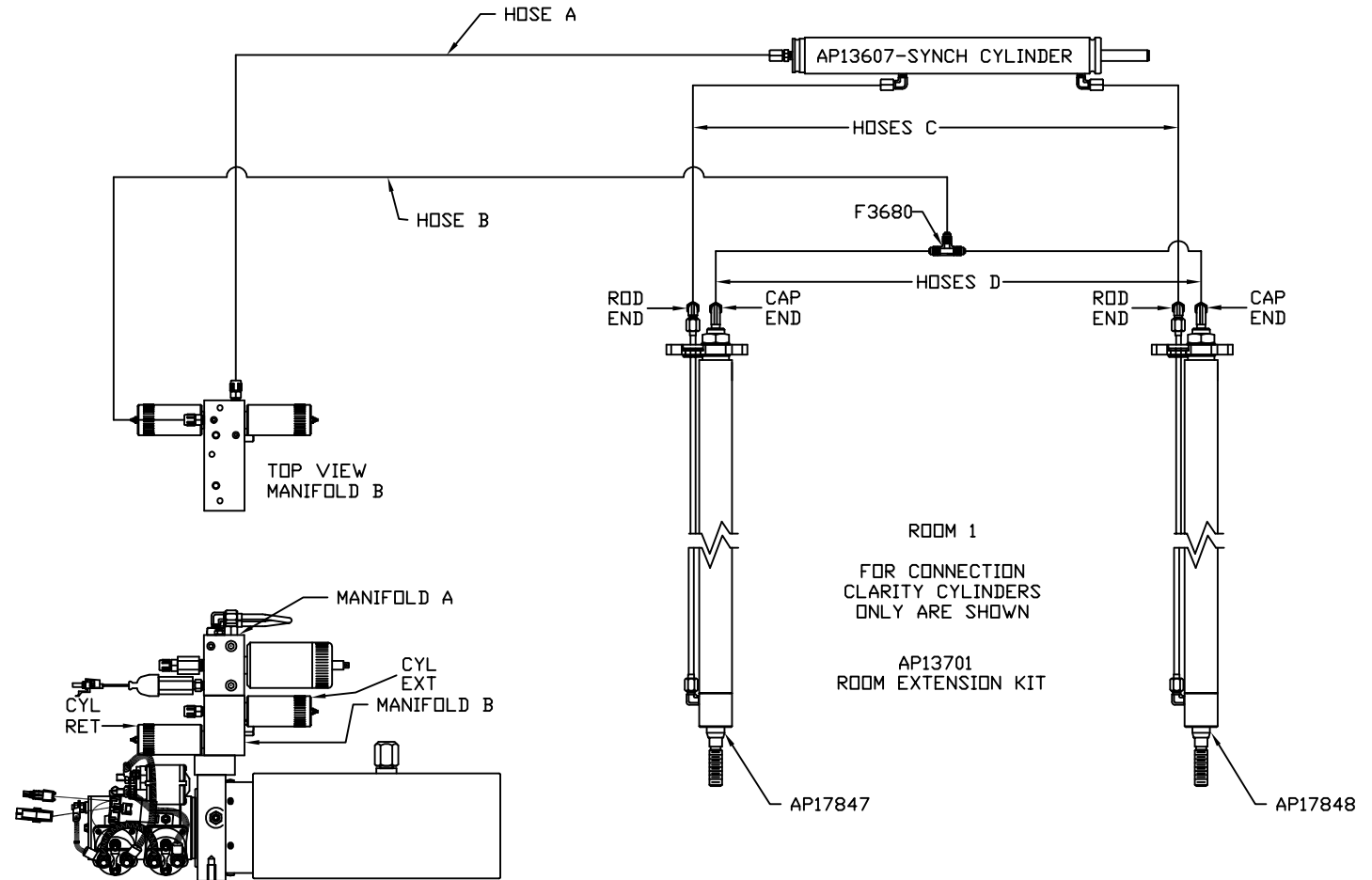
ORIENTATION

← FRONT

NOTE: HOSES C MUST BE HIGH PRESSURE HOSES OF EQUAL LENGTH AND DIAMETER

NOTE: HOSES D MUST BE EQUAL LENGTH AND DIAMETER

MODEL	HOSE A	HOSE B	HOSES C	HOSES D
Q38K	AP7832	AP1412	AP24642	AP5384
Q40KD	AP7832	AP1412	AP24642	AP5384
Q40J	AP7832	AP1412	AP24642	AP5384



SIDE VIEW OF PUMP/MANIFOLD-AP18196
NOTE: SOME POWER UNITS HAVE LARGE VALVES.