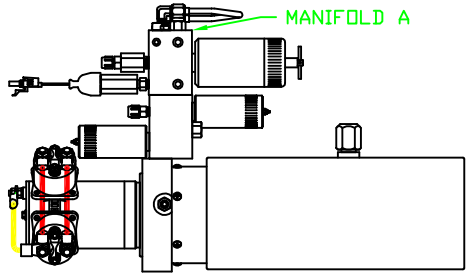
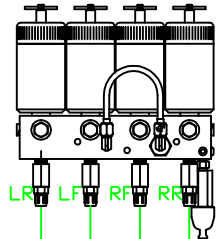


ORIENTATION
← FRONT



SIDE VIEW OF PUMP/MANIFOLD-AP19561
SOME POWER UNITS HAVE LARGE VALVES

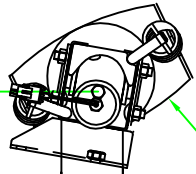
TOP VIEW - MANIFOLD A



LR LF RF RR

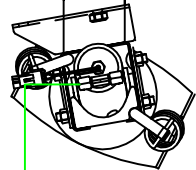
RIGHT FRONT HOSE

LEFT FRONT HOSE



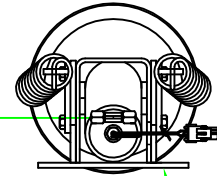
TOP VIEW
AP18117
FRONT JACKS

FRONT JACK KIT:
AP15710



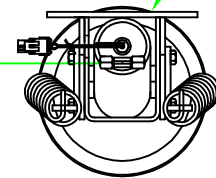
RIGHT REAR HOSE

LEFT REAR HOSE



TOP VIEW
AP10466
RIGHT REAR

NOTE: CROSS TIE REQUIRED FOR REAR JACKS



TOP VIEW
AP10466
LEFT REAR

MODEL	HOSE KIT	LF HOSE	RF HOSE	RR HOSE	LR HOSE
G32V	AP19681	AP5352	AP2443	AP4164	AP4163

LEVELING SYSTEM: AP19810

NO.	DATE	REVISION

HWH I-80 EXIT 267 SOUTH
RT 1 MOSCOW, IOWA 52760

SCALE 1:6 DATE 15AUG05 DRAWN BY .

HYD CONN DIAGRAM

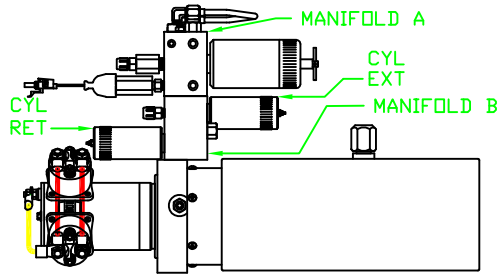
WINNEBAGO

DRAWING NUMBER
MP69040 A/B

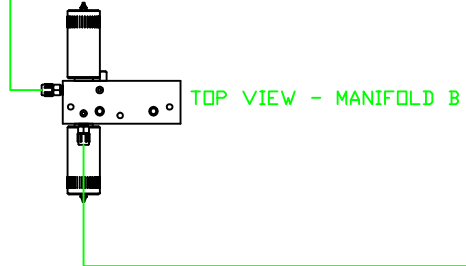
THE INFORMATION DISCLOSED ON THIS DRAWING IS CONFIDENTIAL AND MUST NOT BE DISCLOSED OR USED IN ANY MANNER WHICH WILL BE DETRIMENTAL TO THE HWH CORPORATION

ORIENTATION
 ← FRONT

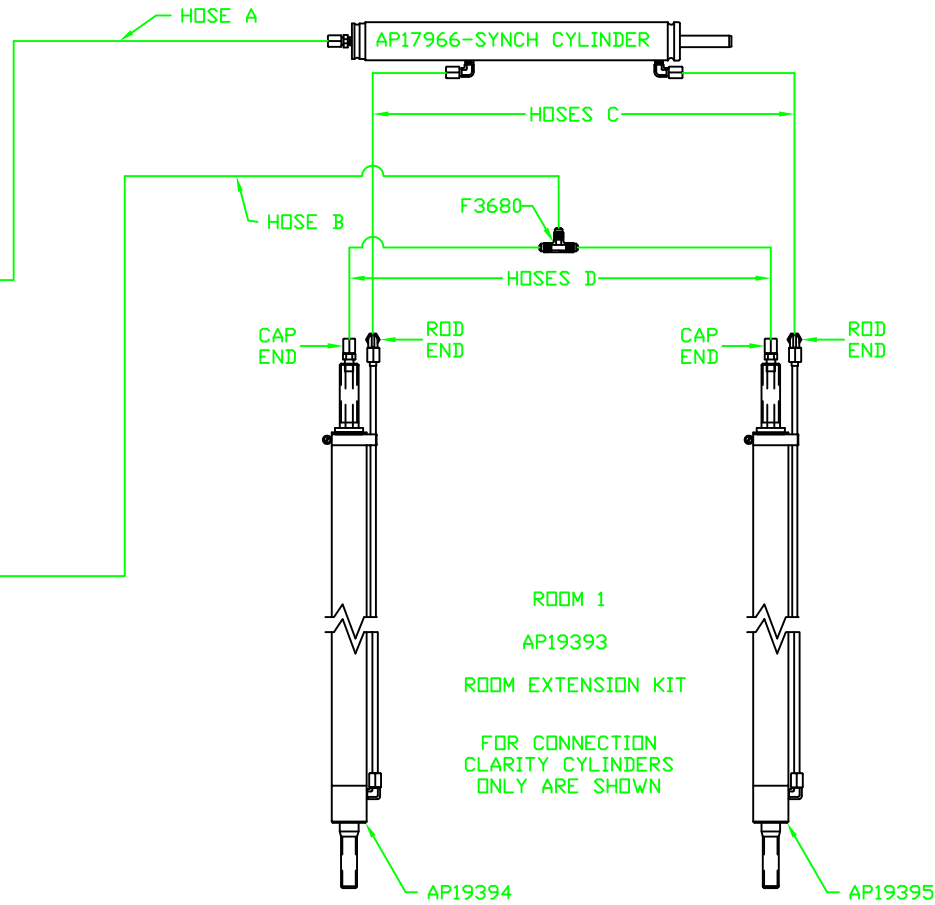
MODEL	HOSE A	HOSE B	HOSES C	HOSES D
G32V	AP5965	AP7358	AP24642	AP5384



SIDE VIEW OF PUMP/MANIFOLD-AP19561
 SOME POWER UNITS HAVE LARGE VALVES



TOP VIEW - MANIFOLD B



NOTE: HOSES C MUST BE HIGH PRESSURE HOSES OF EQUAL LENGTH AND DIAMETER

NOTE: HOSES D MUST BE EQUAL LENGTH AND DIAMETER

ROOM 1
 AP19393
 ROOM EXTENSION KIT

FOR CONNECTION CLARITY CYLINDERS ONLY ARE SHOWN