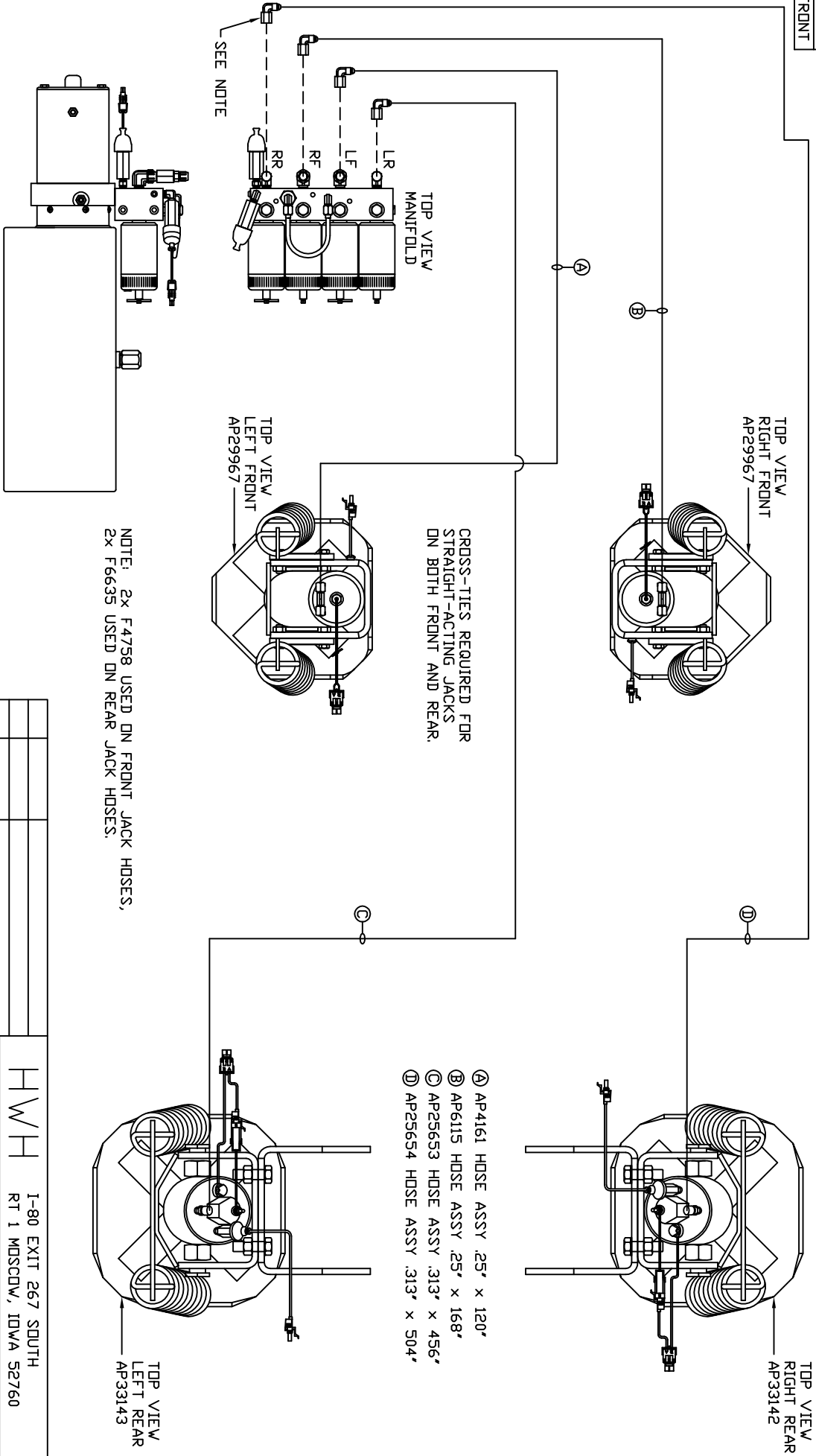


ORIENTATION
FRONT



SEE NOTE

TOP VIEW
MANIFOLD

TOP VIEW
LEFT FRONT
AP29967

TOP VIEW
RIGHT FRONT
AP29967

CROSS-TIES REQUIRED FOR
STRAIGHT-ACTING JACKS
ON BOTH FRONT AND REAR.

TOP VIEW
RIGHT REAR
AP33142

TOP VIEW
LEFT REAR
AP33143

- Ⓐ AP4161 HOSE ASSY .25" X 120'
- Ⓑ AP6115 HOSE ASSY .25" X 168'
- Ⓒ AP25653 HOSE ASSY .313" X 456'
- Ⓓ AP25654 HOSE ASSY .313" X 504'

NOTE: 2x F4758 USED ON FRONT JACK HOSES,
2x F6635 USED ON REAR JACK HOSES.

SIDE VIEW PUMP/MANIFOLD-AP30219
LOCATION AND ORIENTATION OF
PUMP/MANIFOLD ASSEMBLY WILL
DIFFER DEPENDING UPON O.E.M.

LEVELING SYSTEM: AP32772

NO.	DATE	REVISION

THE INFORMATION DISCLOSED ON THIS DRAWING IS CONFIDENTIAL AND MUST NOT BE DISCLOSED OR USED IN ANY MANNER WHICH WILL BE DETRIMENTAL TO THE HWH CORPORATION

HWH 1-80 EXIT 267 SOUTH
RT 1 MOSCOW, IOWA 52760

SCALE 1:6 DATE 01SEP05 DRAWN BY .

HYD CONN DIAGRAM

NEWMAR DRAWING NUMBER
MP69238