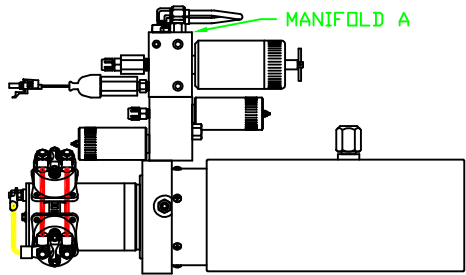
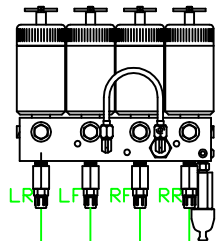


ORIENTATION
← FRONT



SIDE VIEW OF PUMP/MANIFOLD-AP19561
SOME POWER UNITS HAVE LARGE VALVES

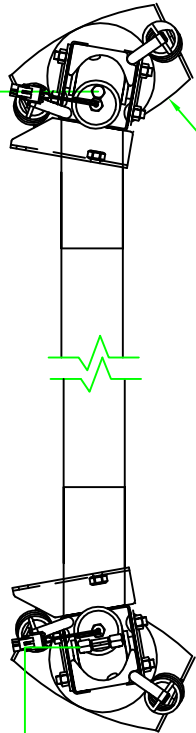
TOP VIEW - MANIFOLD A



LR LF RF RR

RIGHT FRONT HOSE

LEFT FRONT HOSE

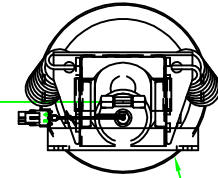


TOP VIEW
AP18117
FRONT JACKS

FRONT JACK KIT:
AP15710

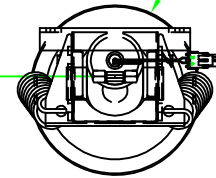
RIGHT REAR HOSE

LEFT REAR HOSE



TOP VIEW
AP21091
RIGHT REAR

NOTE: CROSS TIE REQUIRED FOR REAR JACKS



TOP VIEW
AP21091
LEFT REAR

MODEL	HOSE KIT	LF HOSE	RF HOSE	RR HOSE	LR HOSE
G32V	AP19681	AP5352	AP2443	AP4164	AP4163

LEVELING SYSTEM: AP21151

NO.	DATE	REVISION

THE INFORMATION DISCLOSED ON THIS DRAWING IS CONFIDENTIAL AND MUST NOT BE DISCLOSED OR USED IN ANY MANNER WHICH WILL BE DETRIMENTAL TO THE HWH CORPORATION

HWH I-80 EXIT 267 SOUTH
RT 1 MOSCOW, IDWA 52760

SCALE 1:6 DATE 15AUG05 DRAWN BY .

HYD CONN DIAGRAM

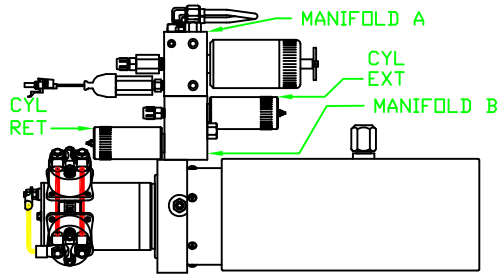
WINNEBAGO

DRAWING NUMBER
MP69244 A/B

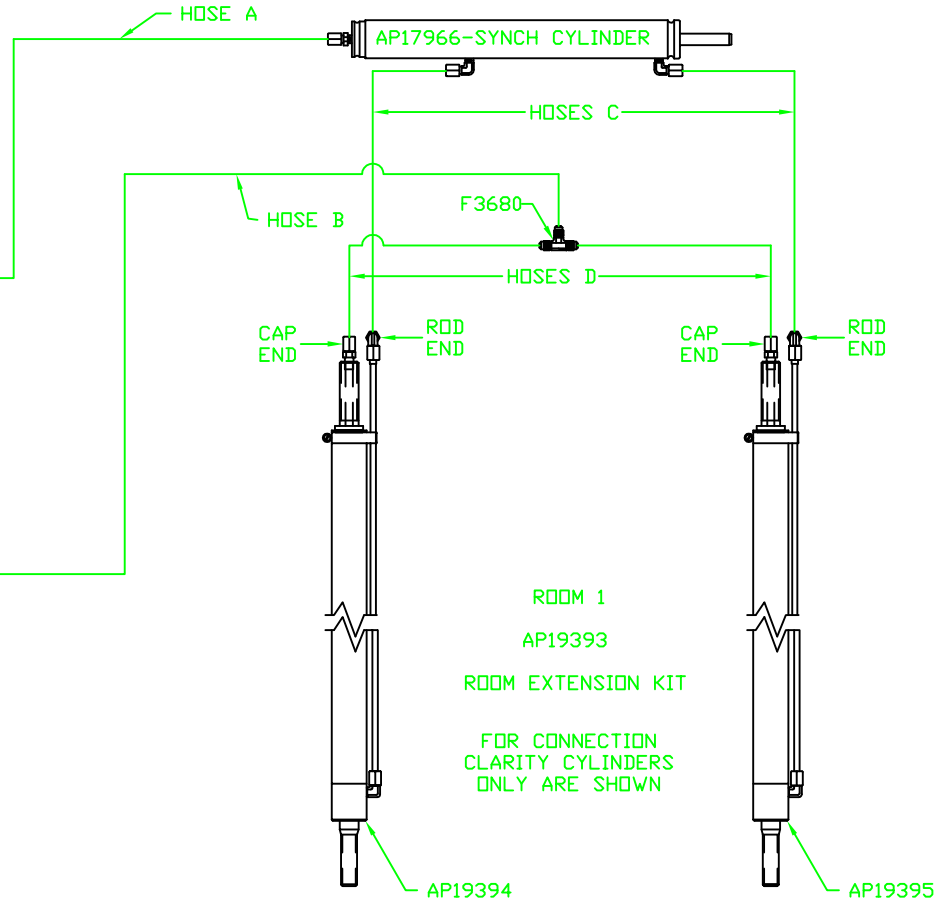
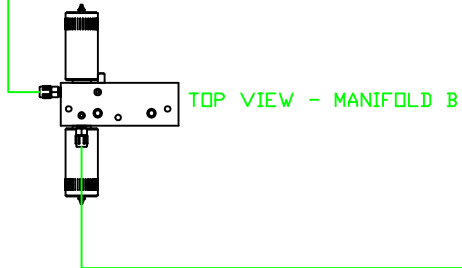
ORIENTATION

← FRONT

MODEL	HOSE A	HOSE B	HOSES C	HOSES D
G32V	AP5965	AP7358	AP24642	AP5384



SIDE VIEW OF PUMP/MANIFOLD-AP19561
SOME POWER UNITS HAVE LARGE VALVES



NOTE: HOSES C MUST BE HIGH PRESSURE HOSES OF EQUAL LENGTH AND DIAMETER

NOTE: HOSES D MUST BE EQUAL LENGTH AND DIAMETER