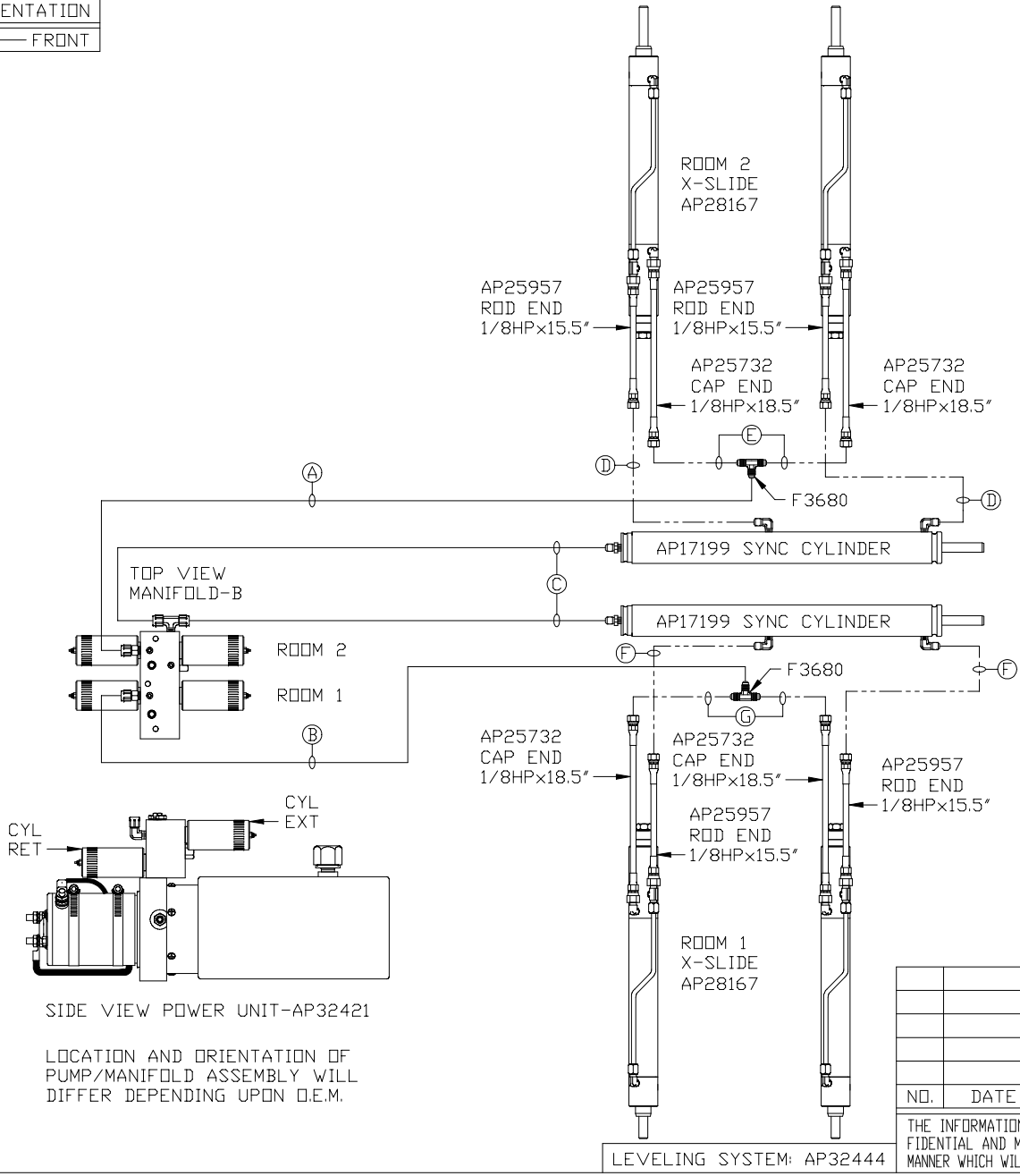


ORIENTATION
 ← FRONT



- Ⓐ CAP END HOSE
- Ⓑ CAP END HOSE
- Ⓒ ROD END - ALWAYS PRESSURIZED
MUST BE HIGH PRESSURE HOSE
- Ⓓ ROD END - ALWAYS PRESSURIZED - MUST
BE HIGH PRESSURE HOSES OF EQUAL
LENGTH AND DIAMETER
- Ⓔ CAP END - MUST MAINTAIN EQUAL LENGTH
AND DIAMETER
- Ⓕ ROD END - ALWAYS PRESSURIZED - MUST
BE HIGH PRESSURE HOSES OF EQUAL
LENGTH AND DIAMETER
- Ⓖ CAP END - MUST MAINTAIN EQUAL LENGTH
AND DIAMETER

SIDE VIEW POWER UNIT-AP32421

LOCATION AND ORIENTATION OF
 PUMP/MANIFOLD ASSEMBLY WILL
 DIFFER DEPENDING UPON O.E.M.

		HWH I-80 EXIT 267 SOUTH RT 1 MOSCOW, IOWA 52760	
SCALE 1:6	DATE 26JAN04	DRAWN BY .	
NO.		REVISION	
THE INFORMATION DISCLOSED ON THIS DRAWING IS CONFIDENTIAL AND MUST NOT BE DISCLOSED OR USED IN ANY MANNER WHICH WILL BE DETRIMENTAL TO THE HWH CORPORATION		VARIOMOBIL	
		DRAWING NUMBER MP69277	

LEVELING SYSTEM: AP32444