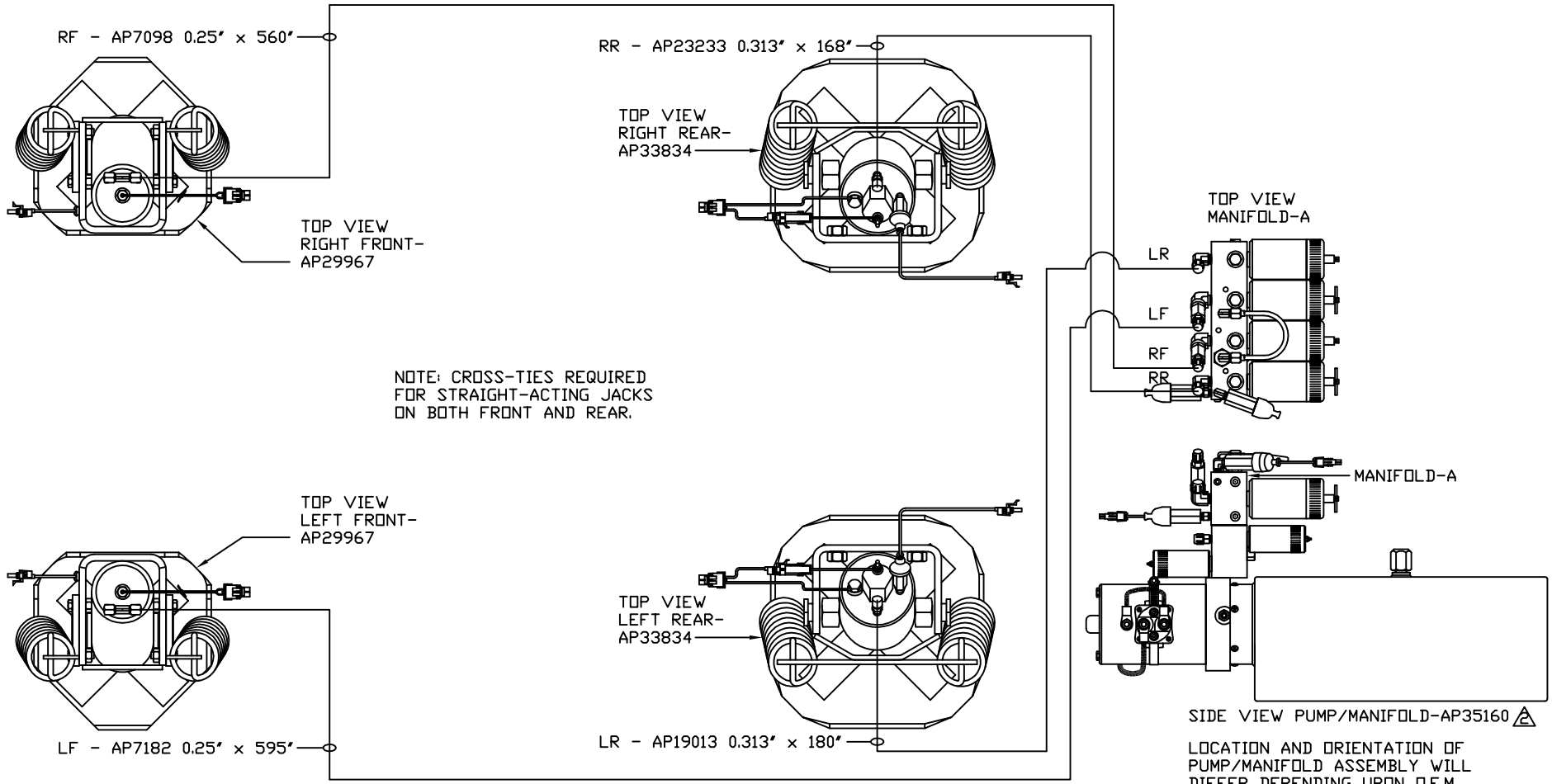

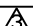




ORIENTATION  
← FRONT



NOTE: CROSS-TIES REQUIRED FOR STRAIGHT-ACTING JACKS ON BOTH FRONT AND REAR.

SIDE VIEW PUMP/MANIFOLD-AP35160   
LOCATION AND ORIENTATION OF PUMP/MANIFOLD ASSEMBLY WILL DIFFER DEPENDING UPON D.E.M.

	15MAR06	WAS AP25679, AP24632
	14JUN05	WAS AP33446
	26JAN05	WAS AP14076, AP4159
NO.	DATE	REVISION

HWH I-80 EXIT 267 SOUTH  
RT 1 MOSCOW, IOWA 52760  
SCALE 1:6 DATE 24AUG04 DRAWN BY .

HYD CONN DIAGRAM

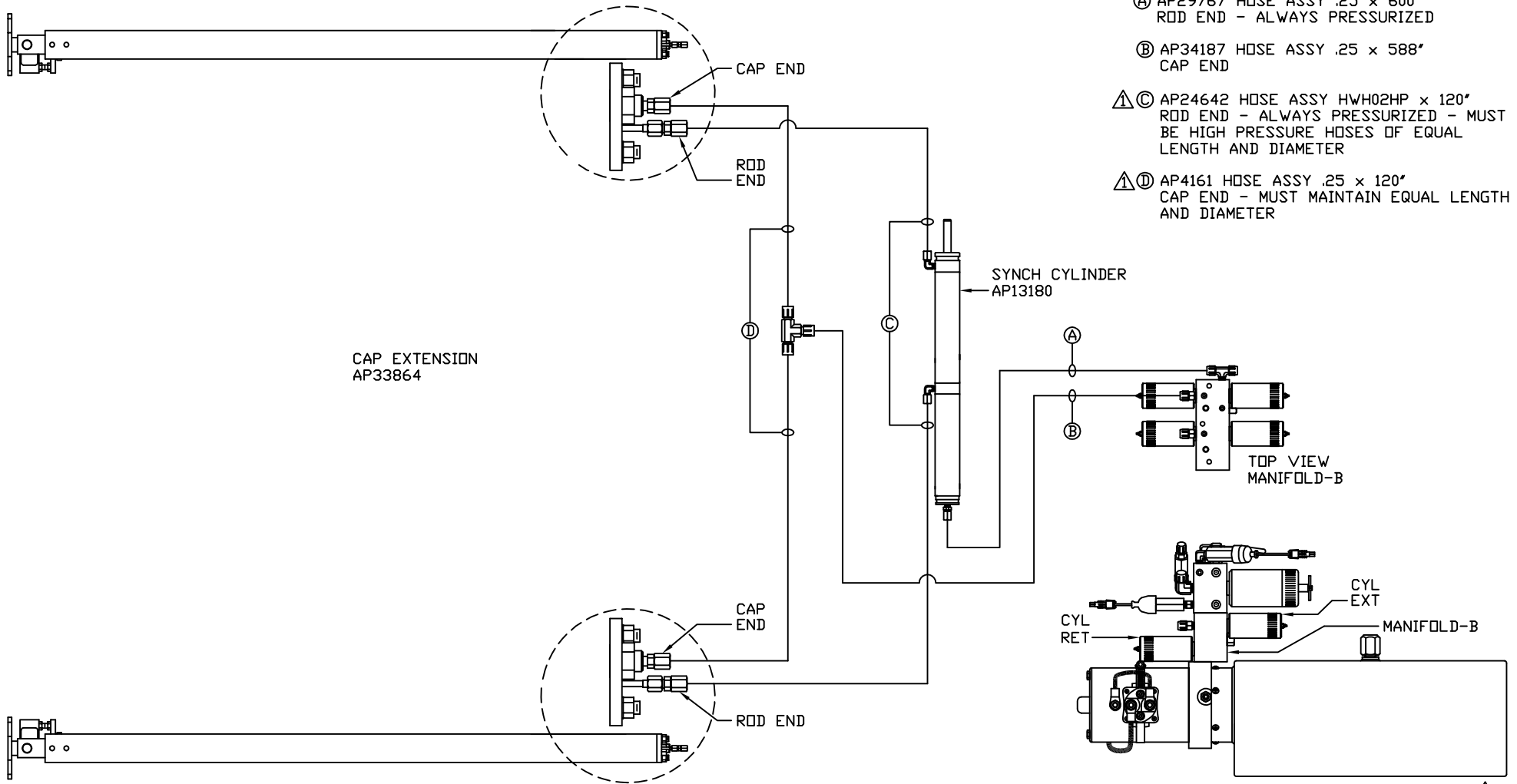
LEVELING SYSTEM: AP32513

THE INFORMATION DISCLOSED ON THIS DRAWING IS CONFIDENTIAL AND MUST NOT BE DISCLOSED OR USED IN ANY MANNER WHICH WILL BE DETRIMENTAL TO THE HWH CORPORATION

NEWMAR K3 DRAWING NUMBER MP69329 A/C

ORIENTATION

← FRONT



Ⓐ AP29767 HOSE ASSY .25 x 600"  
ROD END - ALWAYS PRESSURIZED

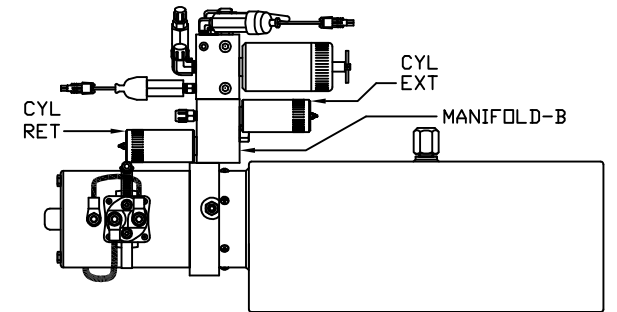
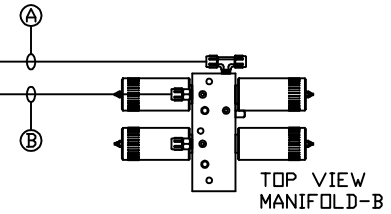
Ⓑ AP34187 HOSE ASSY .25 x 588"  
CAP END

⚠ Ⓒ AP24642 HOSE ASSY HWH02HP x 120"  
ROD END - ALWAYS PRESSURIZED - MUST  
BE HIGH PRESSURE HOSES OF EQUAL  
LENGTH AND DIAMETER

⚠ Ⓓ AP4161 HOSE ASSY .25 x 120"  
CAP END - MUST MAINTAIN EQUAL LENGTH  
AND DIAMETER

SYNCH CYLINDER  
AP13180

CAP EXTENSION  
AP33864

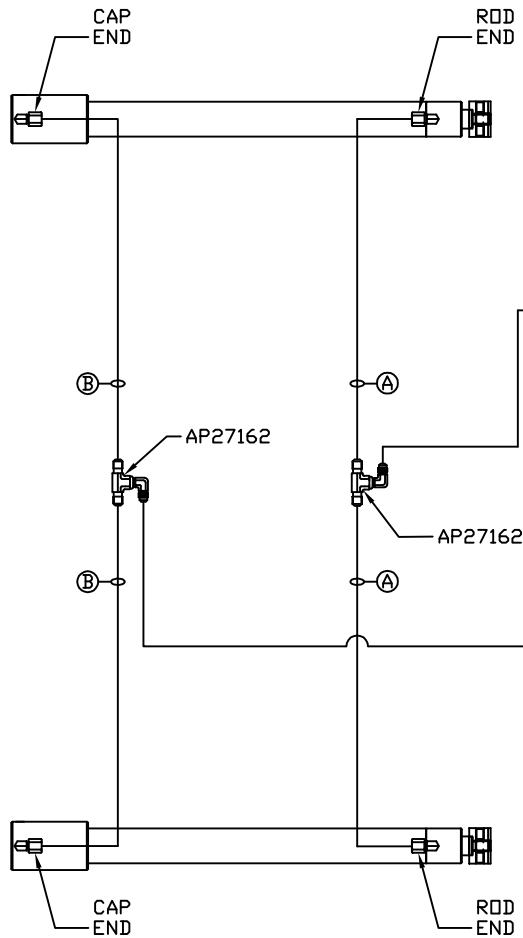


SIDE VIEW PUMP/MANIFOLD-AP35160 ⚠

LOCATION AND ORIENTATION OF  
PUMP/MANIFOLD ASSEMBLY WILL  
DIFFER DEPENDING UPON O.E.M.

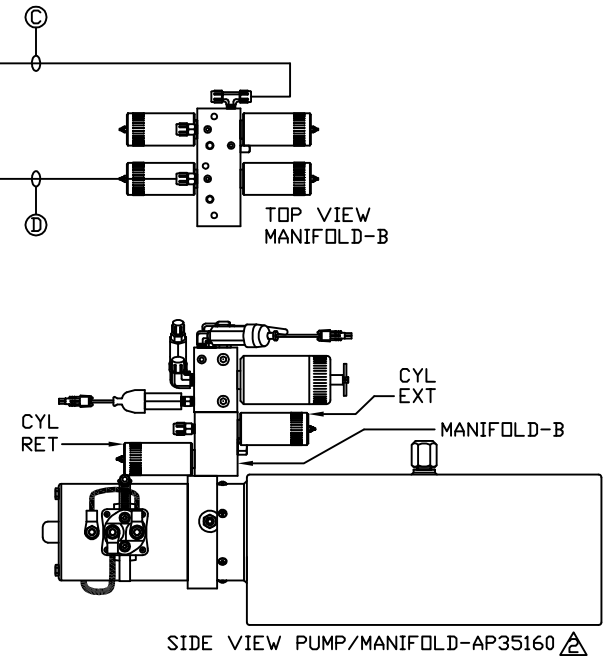
ORIENTATION  
 ← FRONT

AP35175  
 DOOR LIFT ASSEMBLY  
 FOR CONNECTION CLARITY  
 CYLINDERS ONLY ARE  
 SHOWN



NOTE: HOSES (A) AND (B) ARE INCLUDED WITH THE ROOM EXTENSION MECHANISM

- ⚠ (A) AP24643 HOSE ASSY HWH02HP x 126"  
 ROD END - ALWAYS PRESSURIZED - MUST BE HIGH PRESSURE HOSES OF EQUAL LENGTH AND DIAMETER
- ⚠ (B) AP24640 HOSE ASSY HWH02HP x 108"  
 CAP END - MUST MAINTAIN EQUAL LENGTH AND DIAMETER
- ⓐ AP24635 HOSE ASSY HWH02HP x 72"  
 ROD END - ALWAYS PRESSURIZED
- ⓑ AP24635 HOSE ASSY HWH02HP x 72"  
 CAP END



LOCATION AND ORIENTATION OF PUMP/MANIFOLD ASSEMBLY WILL DIFFER DEPENDING UPON O.E.M.