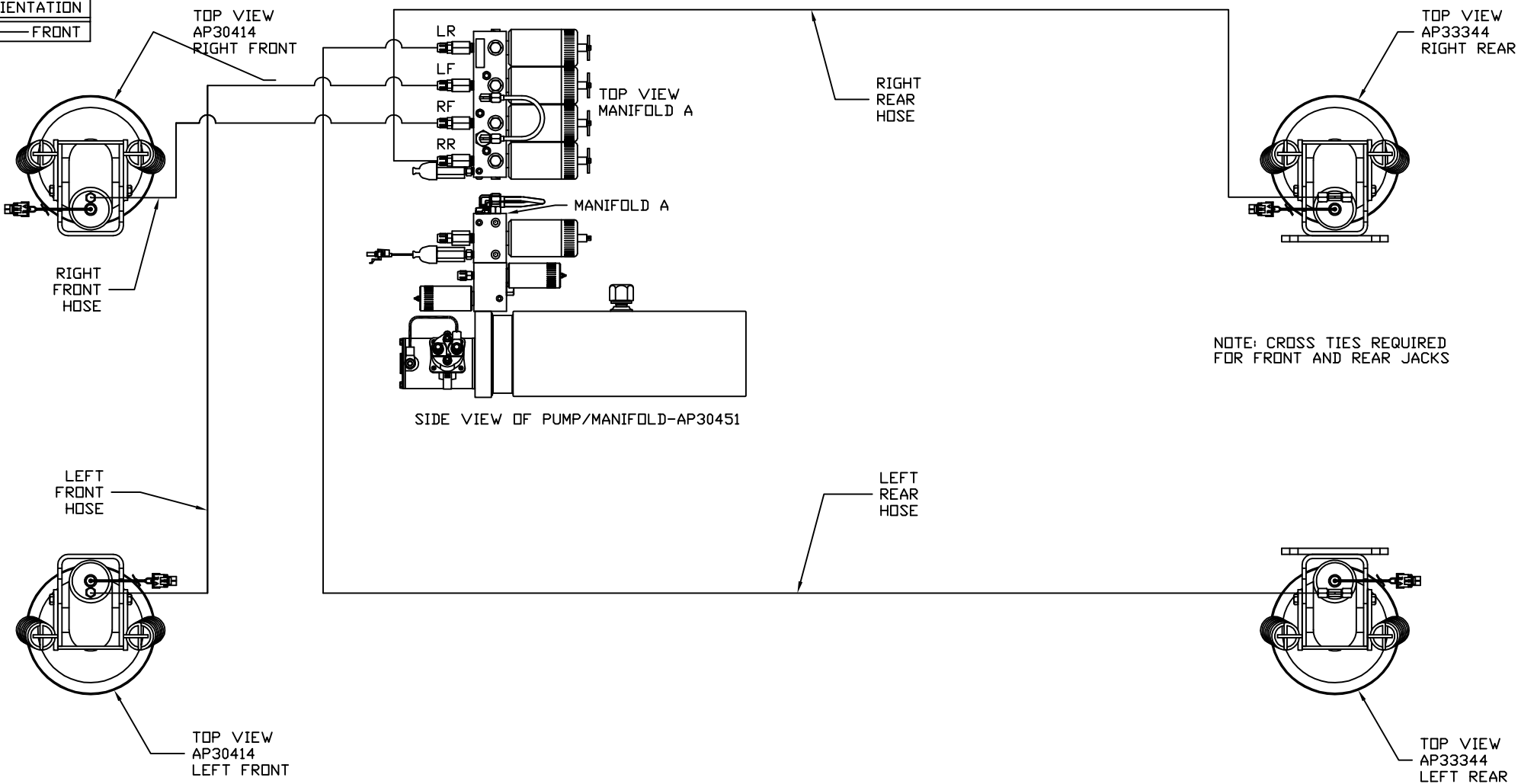


ORIENTATION
← FRONT



** 2004 PRODUCTION MODEL

MODEL	HOSE KIT	LF HOSE	RF HOSE	RR HOSE	LR HOSE
**P39W	AP24448	AP2443	AP5352	AP6117	AP4669
P32T	AP19679	AP2443	AP5352	AP27563	AP4312
P34H	AP19679	AP2443	AP5352	AP27563	AP4312
P36G	AP19679	AP2443	AP5352	AP27563	AP4312

LEVELING SYSTEM: AP31423

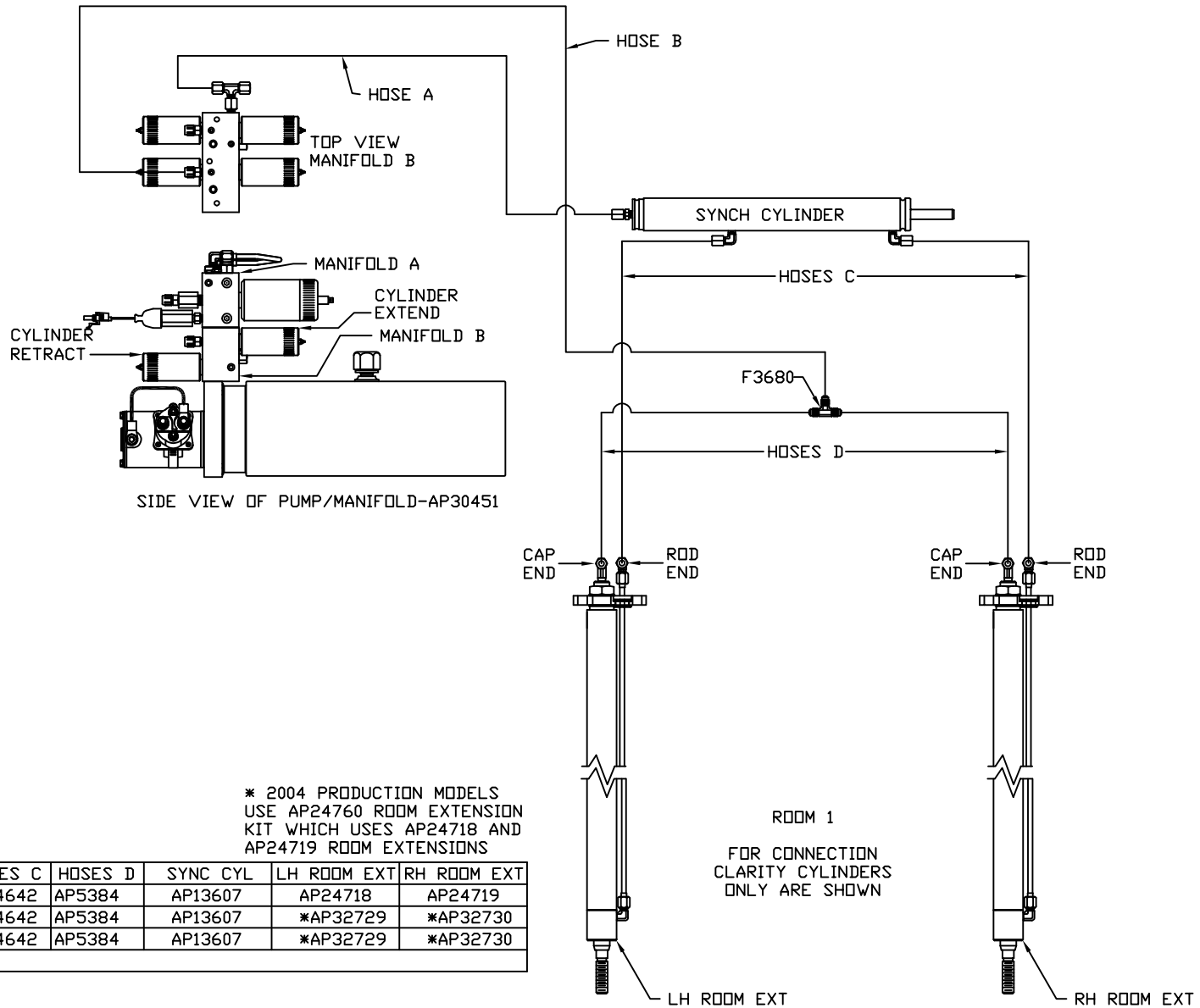
		HWH		I-80 EXIT 267 SOUTH RT 1 MOSCOW, IOWA 52760	
		SCALE 1:6	DATE 27APR05	DRAWN BY .	
1	20JAN14	CORRECTED HOSE ROUTING			
NO.	DATE	REVISION			
HYD CONN DIAGRAM					
WINNEBAGO				DRAWING NUMBER MP69369 A/E	
THE INFORMATION DISCLOSED ON THIS DRAWING IS CONFIDENTIAL AND MUST NOT BE DISCLOSED OR USED IN ANY MANNER WHICH WILL BE DETRIMENTAL TO THE HWH CORPORATION					

ORIENTATION

← FRONT

NOTE: HOSES C MUST BE HIGH PRESSURE HOSES OF EQUAL LENGTH AND DIAMETER

NOTE: HOSES D MUST BE EQUAL LENGTH AND DIAMETER



* 2004 PRODUCTION MODELS
USE AP24760 ROOM EXTENSION
KIT WHICH USES AP24718 AND
AP24719 ROOM EXTENSIONS

**** 2004 PRODUCTION MODEL**

MODEL	HOSE A	HOSE B	HOSES C	HOSES D	SYNC CYL	LH ROOM EXT	RH ROOM EXT
**P39W	AP5924	AP11212	AP24642	AP5384	AP13607	AP24718	AP24719
P32T	AP5924	AP11212	AP24642	AP5384	AP13607	*AP32729	*AP32730
P34H	AP5924	AP11212	AP24642	AP5384	AP13607	*AP32729	*AP32730
P36G	SEE MP69369 C						

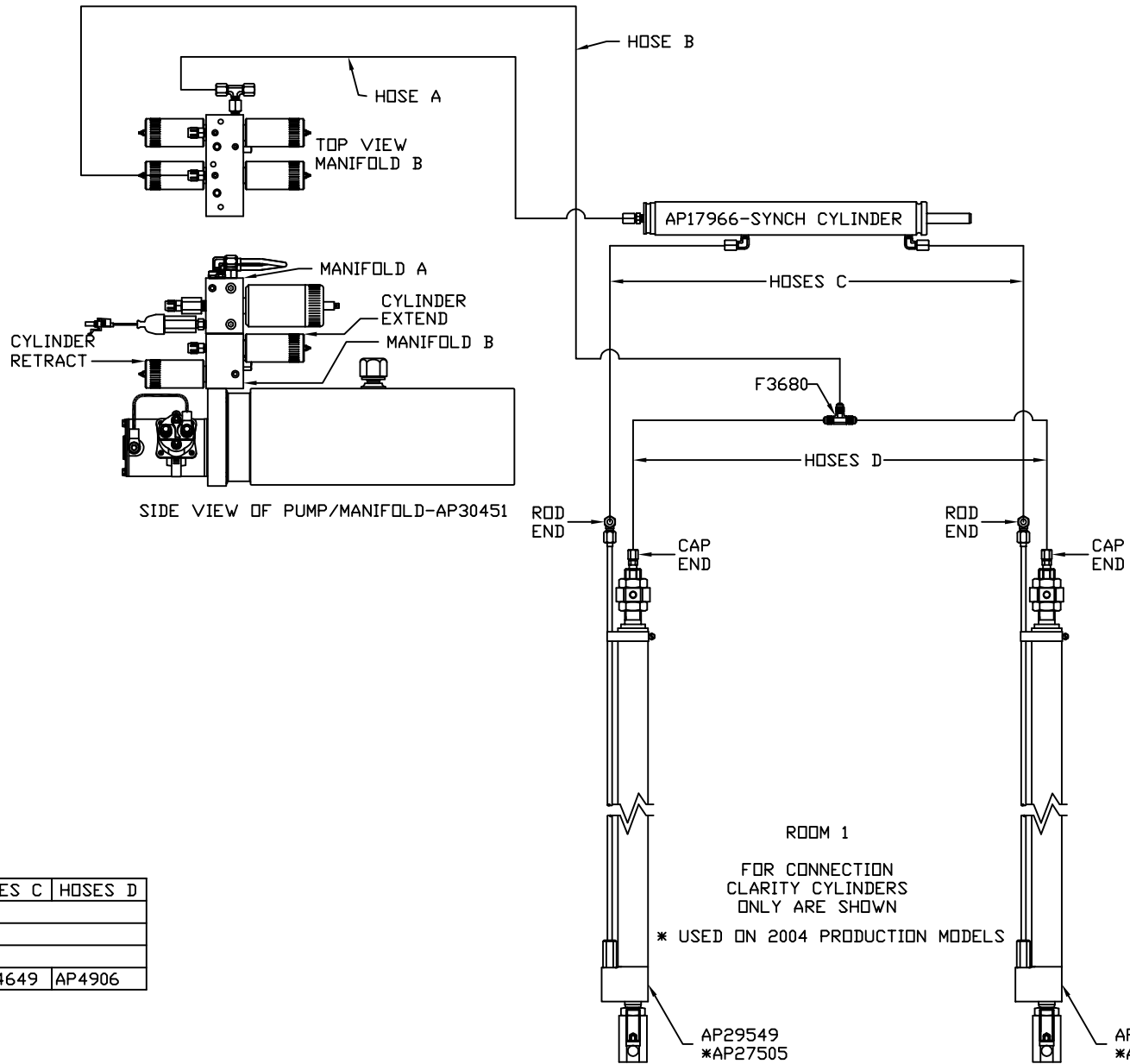
ROOM 1
FOR CONNECTION
CLARITY CYLINDERS
ONLY ARE SHOWN

ORIENTATION

← FRONT

NOTE: HOSES C MUST BE HIGH PRESSURE HOSES OF EQUAL LENGTH AND DIAMETER

NOTE: HOSES D MUST BE EQUAL LENGTH AND DIAMETER



** 2004 PRODUCTION MODEL

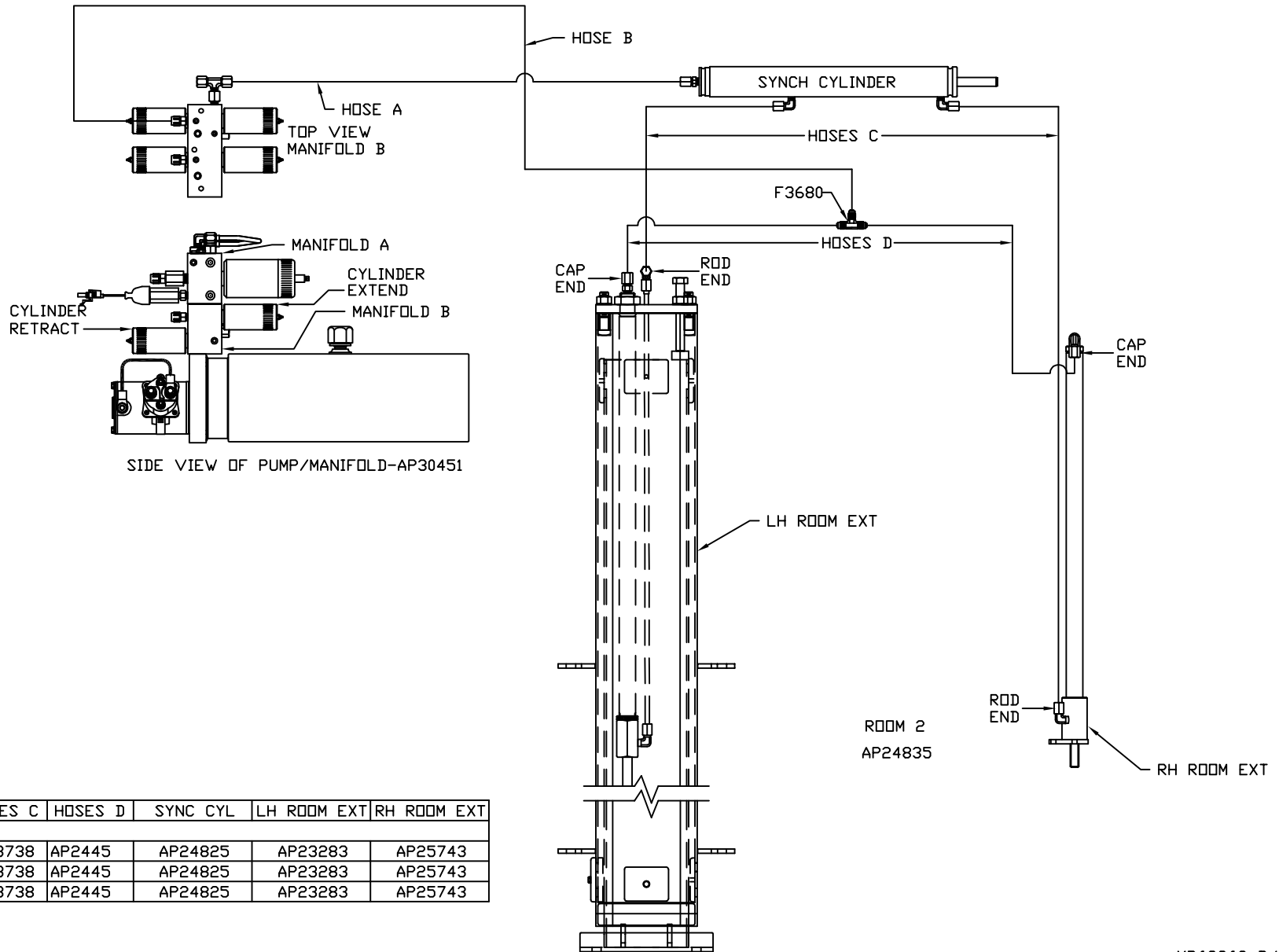
MODEL	HOSE A	HOSE B	HOSES C	HOSES D
**P39W	SEE MP69369 B			
P32T	SEE MP69369 B			
P34H	SEE MP69369 B			
P36G	AP5924	AP11212	AP24649	AP4906

ORIENTATION

← FRONT

NOTE: HOSES C MUST BE HIGH PRESSURE HOSES OF EQUAL LENGTH AND DIAMETER

NOTE: HOSES D MUST BE EQUAL LENGTH AND DIAMETER



**** 2004 PRODUCTION MODEL**

MODEL	HOSE A	HOSE B	HOSES C	HOSES D	SYNC CYL	LH ROOM EXT	RH ROOM EXT
**P39W	SEE MP69369 E						
P32T	AP6117	AP4669	AP23738	AP2445	AP24825	AP23283	AP25743
P34H	AP6117	AP4669	AP23738	AP2445	AP24825	AP23283	AP25743
P36G	AP6117	AP4669	AP23738	AP2445	AP24825	AP23283	AP25743

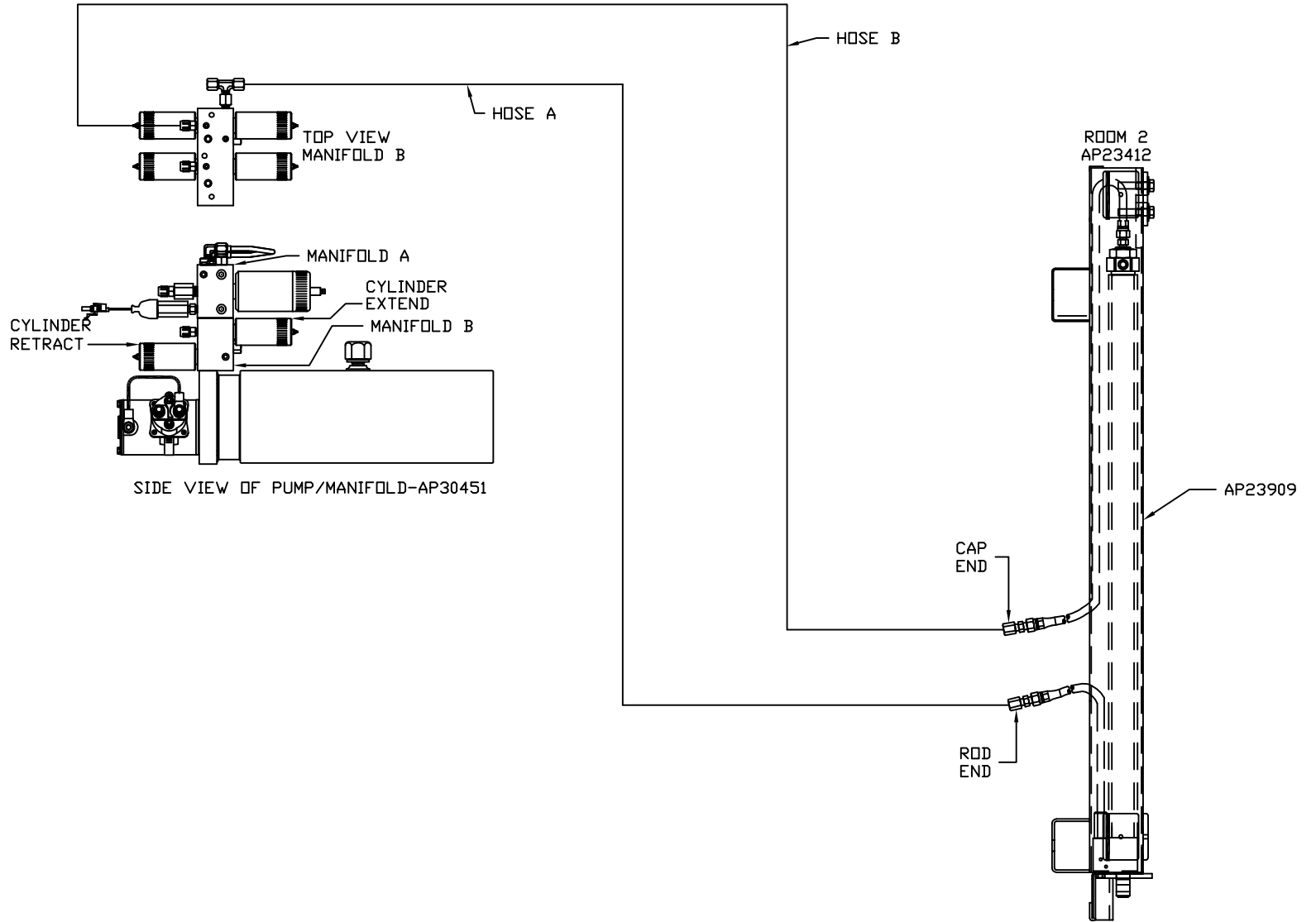
ROOM 2
AP24835

ORIENTATION

← FRONT

NOTE: HOSES C MUST BE HIGH PRESSURE HOSES OF EQUAL LENGTH AND DIAMETER

NOTE: HOSES D MUST BE EQUAL LENGTH AND DIAMETER



** 2004 PRODUCTION MODEL

MODEL	HOSE A	HOSE B
**P39W	AP6217	AP5925
P32T	SEE MP69369 D	
P34H	SEE MP69369 D	
P36G	SEE MP69369 D	