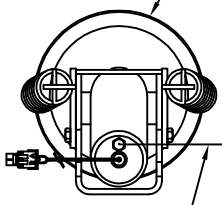


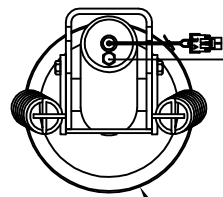
ORIENTATION
← FRONT

TOP VIEW
AP30414
RIGHT FRONT

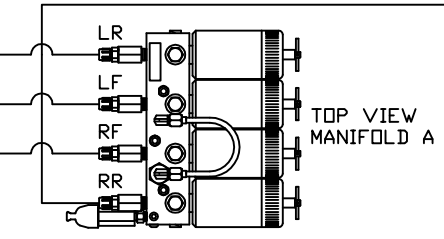


RIGHT
FRONT
HOSE

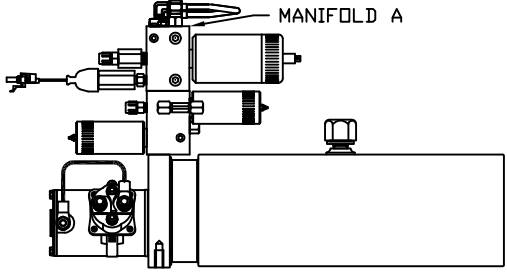
LEFT
FRONT
HOSE



TOP VIEW
AP30414
LEFT FRONT



TOP VIEW
MANIFOLD A

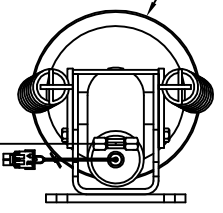


SIDE VIEW OF PUMP/MANIFOLD-AP30475

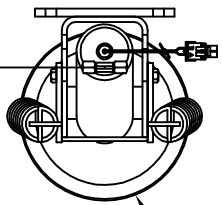
RIGHT
REAR
HOSE

LEFT
REAR
HOSE

TOP VIEW
AP33344
RIGHT REAR



NOTE: CROSS TIES REQUIRED
FOR FRONT AND REAR JACKS



TOP VIEW
AP33344
LEFT REAR

MODEL	HOSE KIT	LF HOSE	RF HOSE	RR HOSE	LR HOSE
P39K	AP19679	AP2443	AP5352	AP27563	AP4312

LEVELING SYSTEM: AP34647

NO.	DATE	REVISION
3	20JAN14	CORRECTED HOSE ROUTING
2	29AUG05	CORR. FITTING
1	01AUG05	CORR. HOSE LOCATIONS

THE INFORMATION DISCLOSED ON THIS DRAWING IS CONFIDENTIAL AND MUST NOT BE DISCLOSED OR USED IN ANY MANNER WHICH WILL BE DETRIMENTAL TO THE HWH CORPORATION

HWH I-80 EXIT 267 SOUTH
RT 1 MOSCOW, IOWA 52760

SCALE 1:6 DATE 27APR05 DRAWN BY .

HYD CONN DIAGRAM

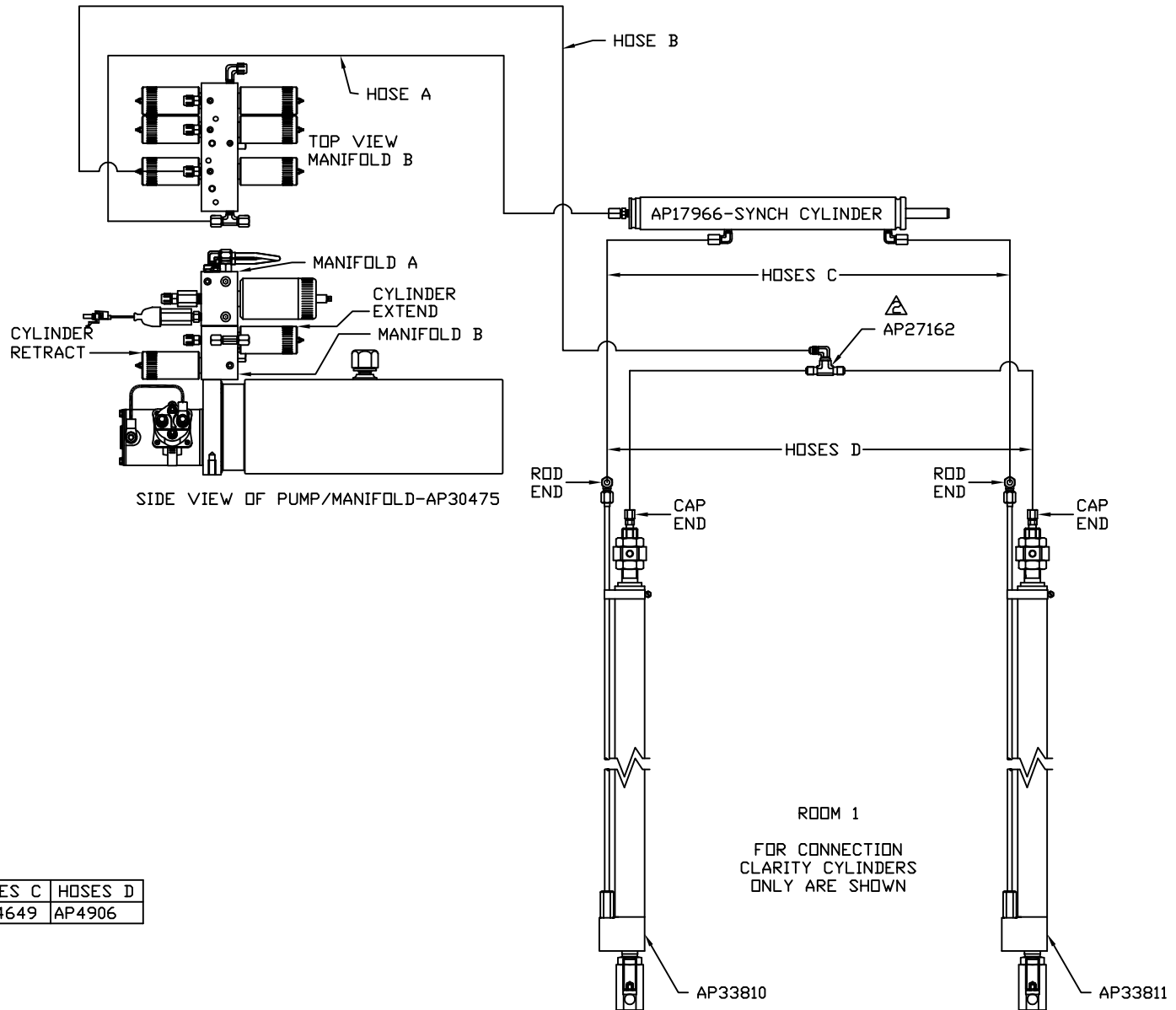
WINNEBAGO DRAWING NUMBER MP69370 A/D

ORIENTATION

← FRONT

NOTE: HOSES C MUST BE HIGH PRESSURE HOSES OF EQUAL LENGTH AND DIAMETER

NOTE: HOSES D MUST BE EQUAL LENGTH AND DIAMETER

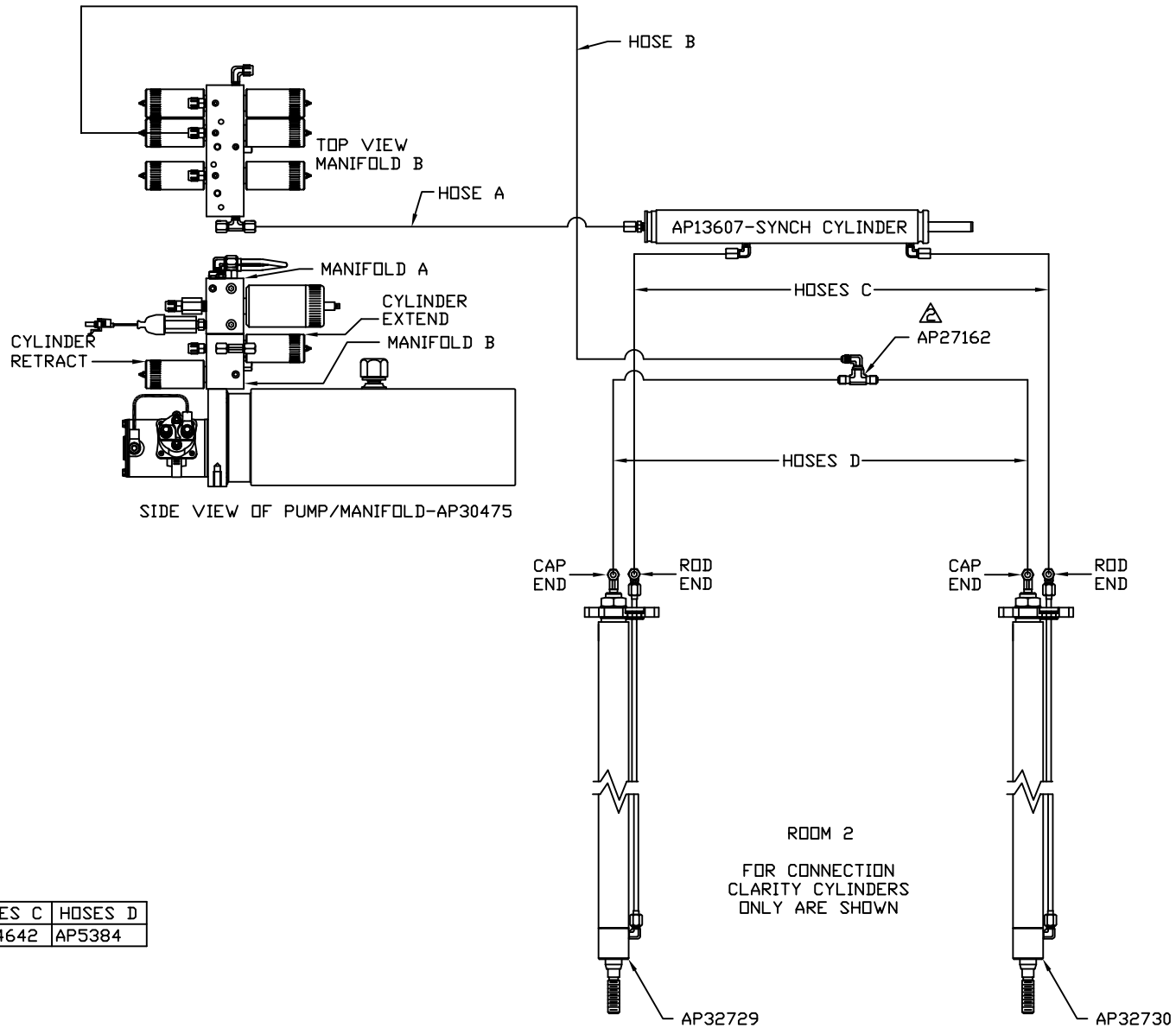


MODEL	HOSE A	HOSE B	HOSES C	HOSES D
P39K	AP5965	AP7358	AP24649	AP4906

ORIENTATION
 ← FRONT

NOTE: HOSES C MUST BE HIGH PRESSURE HOSES OF EQUAL LENGTH AND DIAMETER

NOTE: HOSES D MUST BE EQUAL LENGTH AND DIAMETER



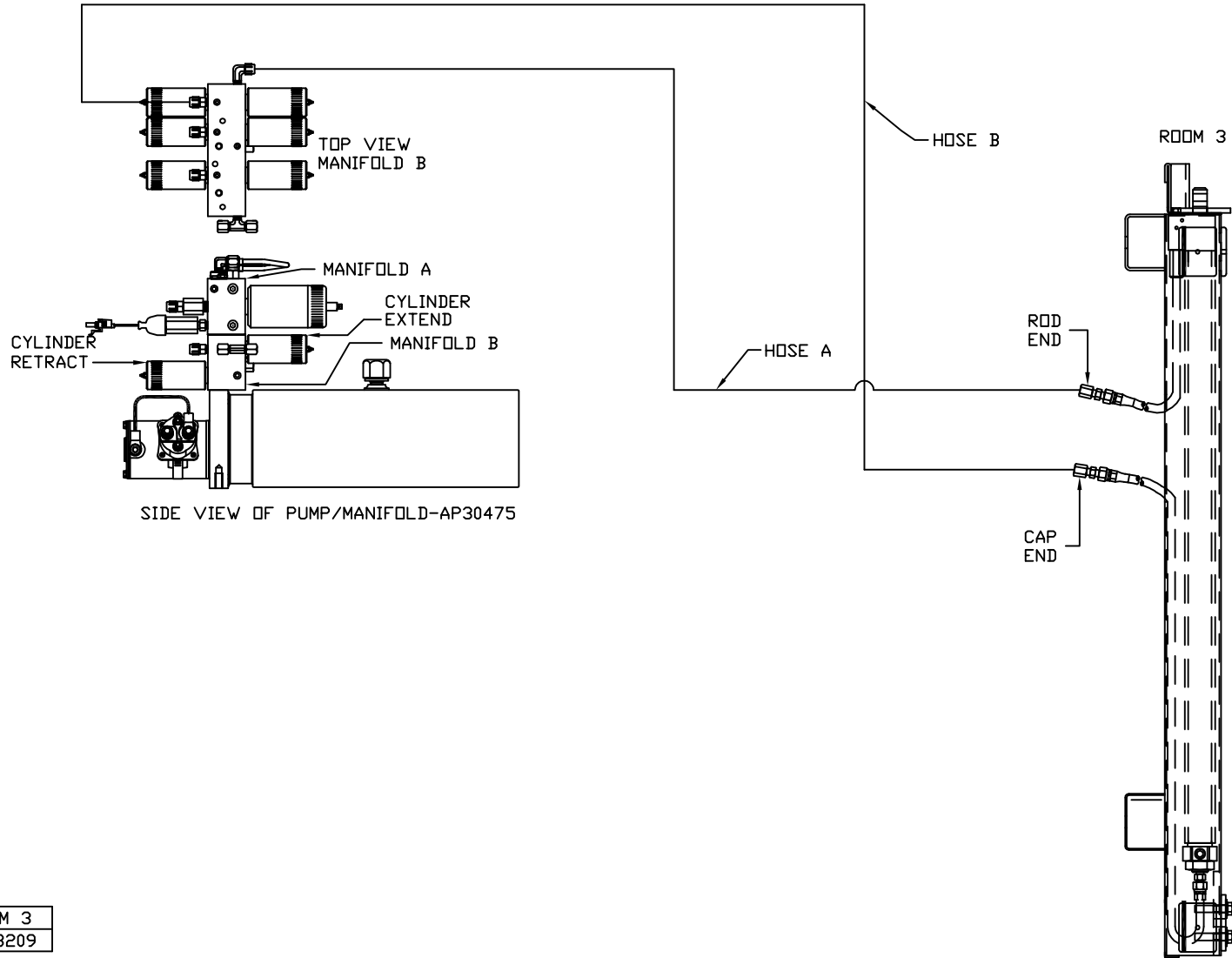
MODEL	HOSE A	HOSE B	HOSES C	HOSES D
P39K	AP6217	AP5925	AP24642	AP5384

ORIENTATION

← FRONT

NOTE: HOSES C MUST BE HIGH PRESSURE HOSES OF EQUAL LENGTH AND DIAMETER

NOTE: HOSES D MUST BE EQUAL LENGTH AND DIAMETER



MODEL	HOSE A	HOSE B	ROOM 3
P39K	AP5924	AP11212	AP23209