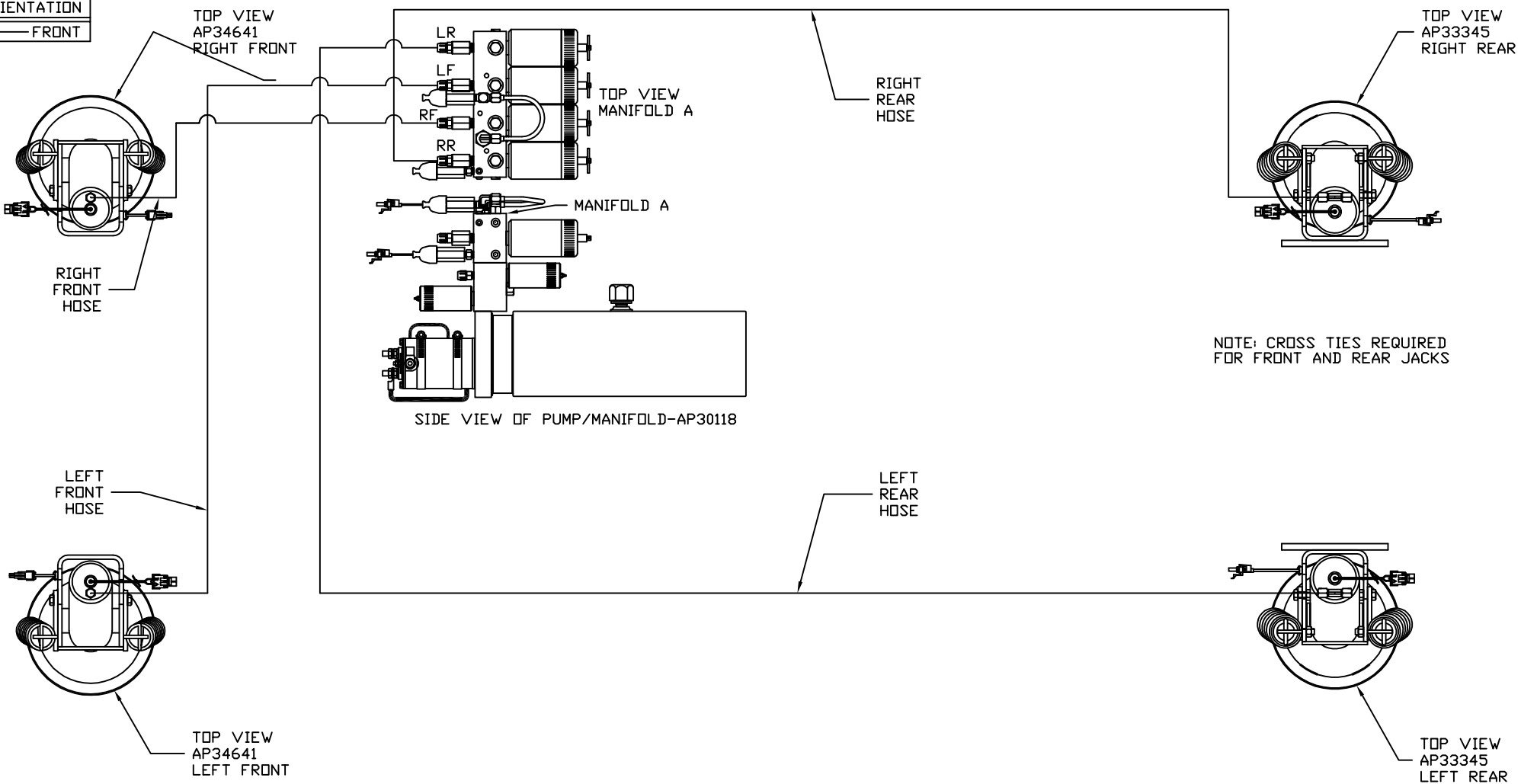


ORIENTATION
← FRONT



MODEL	HOSE KIT	LF HOSE	RF HOSE	RR HOSE	LR HOSE
P32T	AP19679	AP2443	AP5352	AP27563	AP4312
P34H	AP19679	AP2443	AP5352	AP27563	AP4312
P36G	AP19679	AP2443	AP5352	AP27563	AP4312

LEVELING SYSTEM: AP34303

NO.	DATE	REVISION
3	20JAN14	CORRECTED HOSE ROUTING
2	29AUG05	CORR. FITTING
1	01AUG05	CORR. HOSE LOCATIONS

THE INFORMATION DISCLOSED ON THIS DRAWING IS CONFIDENTIAL AND MUST NOT BE DISCLOSED OR USED IN ANY MANNER WHICH WILL BE DETRIMENTAL TO THE HWH CORPORATION

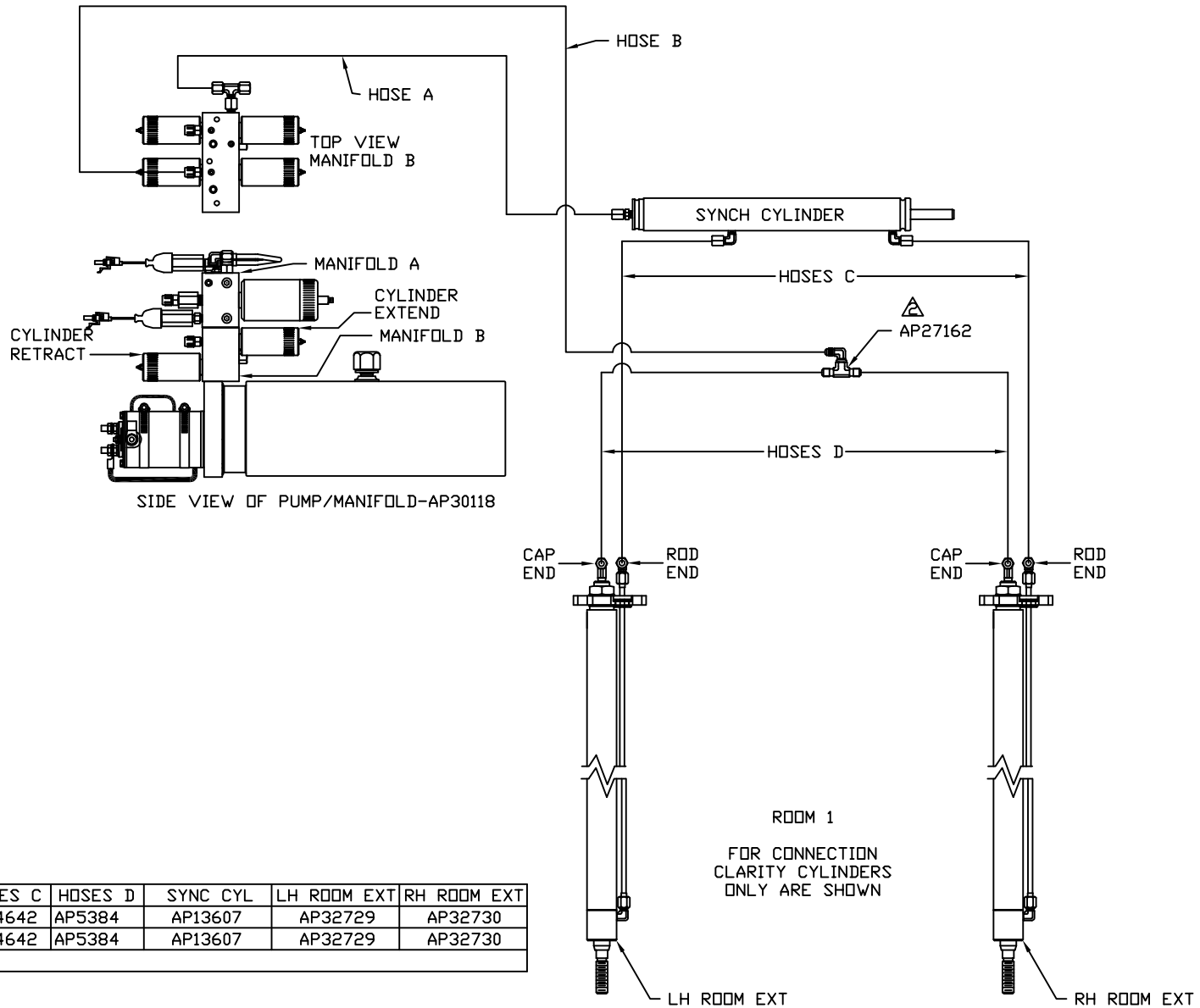
HWH			I-80 EXIT 267 SOUTH RT 1 MOSCOW, IOWA 52760		
SCALE 1:6	DATE 27APR05	DRAWN BY .			
HYD CONN DIAGRAM					
WINNEBAGO				DRAWING NUMBER MP69371 A/D	

ORIENTATION

← FRONT

NOTE: HOSES C MUST BE HIGH PRESSURE HOSES OF EQUAL LENGTH AND DIAMETER

NOTE: HOSES D MUST BE EQUAL LENGTH AND DIAMETER



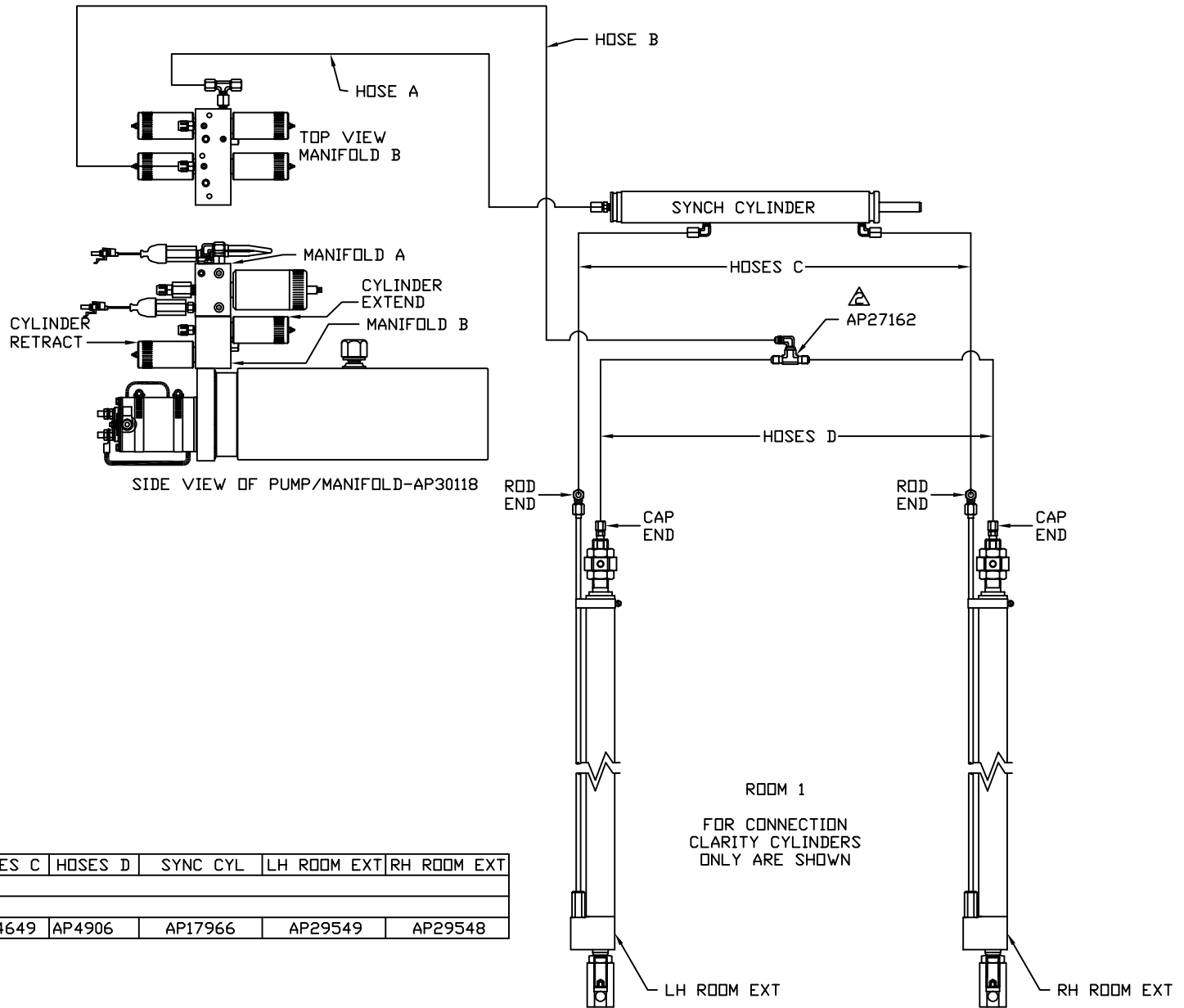
MODEL	HOSE A	HOSE B	HOSES C	HOSES D	SYNC CYL	LH ROOM EXT	RH ROOM EXT
P32T	AP5924	AP11212	AP24642	AP5384	AP13607	AP32729	AP32730
P34H	AP5924	AP11212	AP24642	AP5384	AP13607	AP32729	AP32730
P36G	SEE MP69371 C						

ORIENTATION

← FRONT

NOTE: HOSES C MUST BE HIGH PRESSURE HOSES OF EQUAL LENGTH AND DIAMETER

NOTE: HOSES D MUST BE EQUAL LENGTH AND DIAMETER



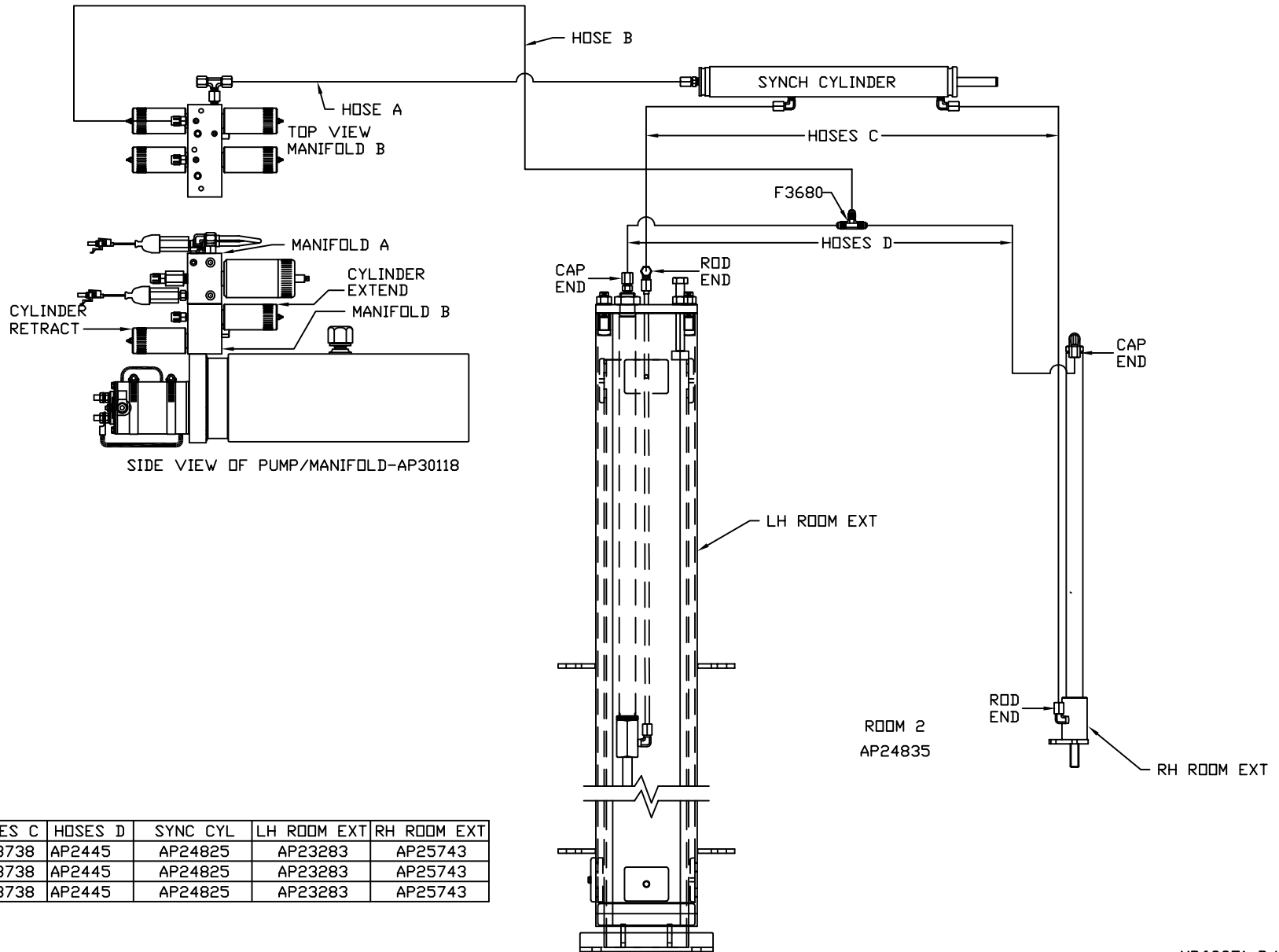
MODEL	HOSE A	HOSE B	HOSES C	HOSES D	SYNC CYL	LH ROOM EXT	RH ROOM EXT
P32T	SEE MP69371 B						
P34H	SEE MP69371 B						
P36G	AP5924	AP11212	AP24649	AP4906	AP17966	AP29549	AP29548

ORIENTATION

← FRONT

NOTE: HOSES C MUST BE HIGH PRESSURE HOSES OF EQUAL LENGTH AND DIAMETER

NOTE: HOSES D MUST BE EQUAL LENGTH AND DIAMETER



MODEL	HOSE A	HOSE B	HOSES C	HOSES D	SYNC CYL	LH ROOM EXT	RH ROOM EXT
P32T	AP6117	AP4669	AP23738	AP2445	AP24825	AP23283	AP25743
P34H	AP6117	AP4669	AP23738	AP2445	AP24825	AP23283	AP25743
P36G	AP6117	AP4669	AP23738	AP2445	AP24825	AP23283	AP25743