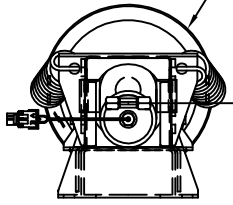


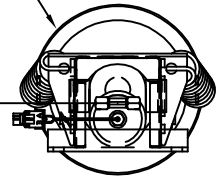
ORIENTATION  
← FRONT

TOP VIEW  
AP29978  
RIGHT FRONT



RIGHT  
FRONT  
HOSE

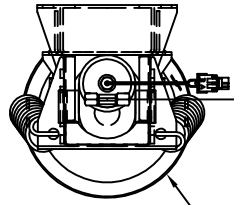
TOP VIEW  
AP27118  
RIGHT REAR



RIGHT  
REAR  
HOSE

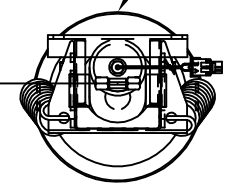
NOTE: CROSS TIES REQUIRED  
FOR FRONT AND REAR JACKS

LEFT  
FRONT  
HOSE

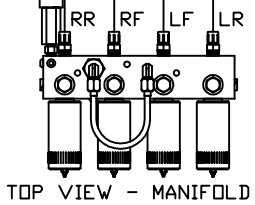


TOP VIEW  
AP29978  
LEFT FRONT

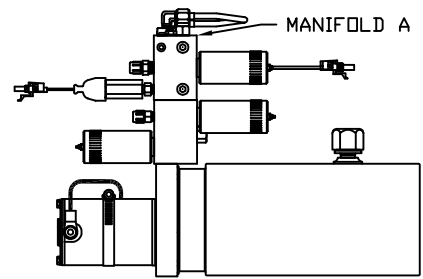
LEFT  
REAR  
HOSE



TOP VIEW  
AP27118  
LEFT REAR



TOP VIEW - MANIFOLD A



SIDE VIEW OF PUMP/MANIFOLD-AP32359

MODEL	HOSE KIT	LF HOSE	RF HOSE	RR HOSE	LR HOSE
**G38G	AP32130	AP4073	AP7832	AP2464	AP4064
G33V	AP32708	AP4073	AP7832	AP4904	AP4729
G35U	AP32708	AP4073	AP7832	AP4904	AP4729
G38R	AP32130	AP4073	AP7832	AP2464	AP4064
G38T	AP34668	AP4073	AP7832	AP2465	AP7043

\*\* 2005 PRODUCTION MODEL

LEVELING SYSTEM: AP32710

NO.	DATE	REVISION

HWH I-80 EXIT 267 SOUTH  
RT 1 MOSCOW, IOWA 52760

SCALE 1:6 DATE 21APR05 DRAWN BY .

HYD CONN DIAGRAM

THE INFORMATION DISCLOSED ON THIS DRAWING IS CONFIDENTIAL AND MUST NOT BE DISCLOSED OR USED IN ANY MANNER WHICH WILL BE DETRIMENTAL TO THE HWH CORPORATION

WINNEBAGO DRAWING NUMBER MP69381 A/E

ORIENTATION  
← FRONT

MODEL	HOSE A	HOSE B	HOSES C	HOSES D	SYNC CYL	LH ROOM EXT	RH ROOM EXT
**G38G	AP4665	AP5616	AP24649	AP4906	AP17966	AP27505	AP27505
G33V	AP4665	AP5616	AP24649	AP4906	AP17966	*AP33810	AP27505
G35U	AP4665	AP5616	AP24649	AP4906	AP17966	AP27505	AP27505
G38R	AP4665	AP5616	AP24649	AP4906	AP17966	***AP33810	***AP33811
G38T	MP69381 C						

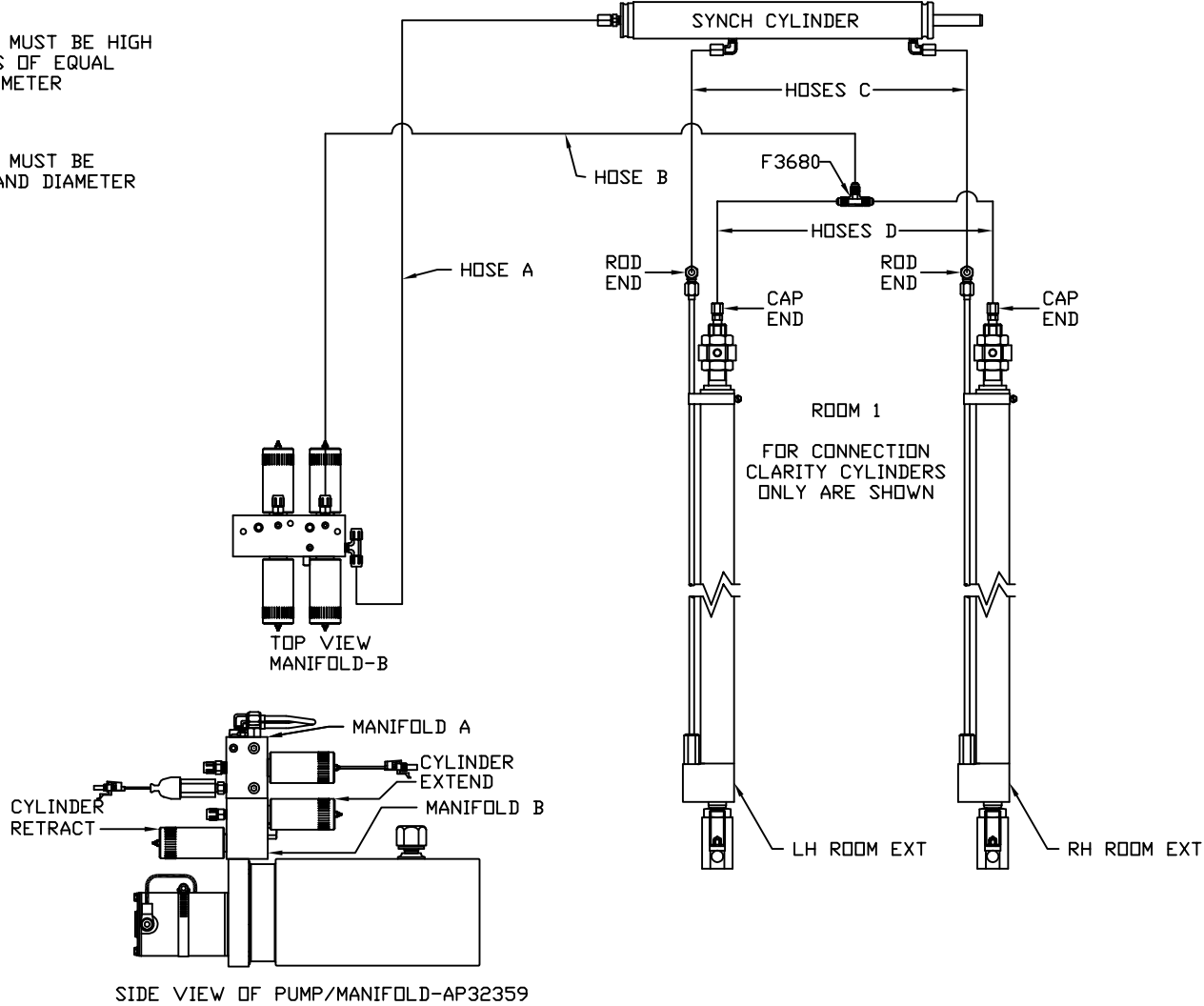
\*\* 2005 PRODUCTION MODEL

\* AP27505 USED ON 2005 PRODUCTION MODELS

\*\*\* AP27505 AND AP27504 USED ON 2005 PRODUCTION MODELS

NOTE: HOSES C MUST BE HIGH PRESSURE HOSES OF EQUAL LENGTH AND DIAMETER

NOTE: HOSES D MUST BE EQUAL LENGTH AND DIAMETER

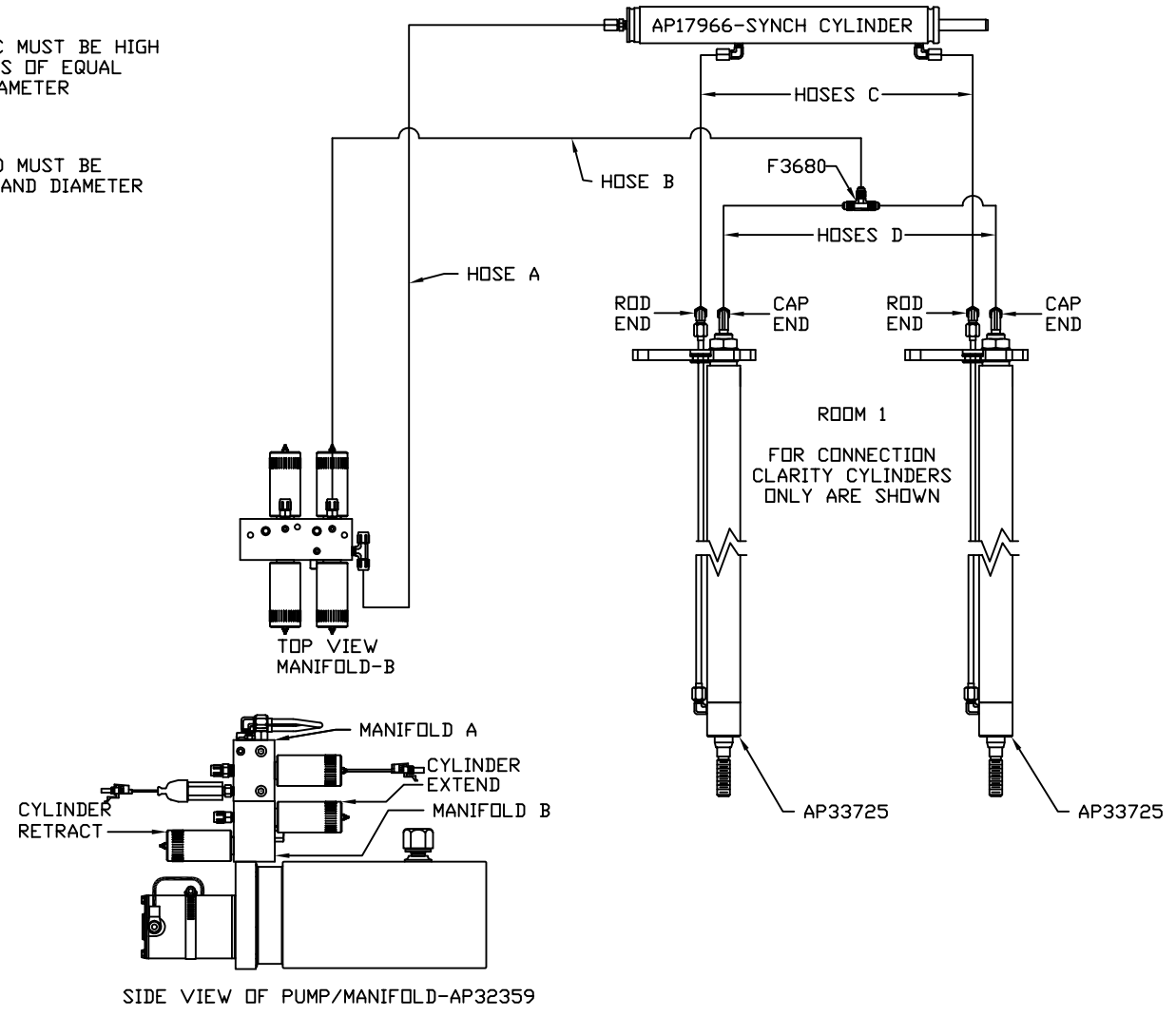


ORIENTATION  
 ← FRONT

MODEL	HOSE A	HOSE B	HOSES C	HOSES D	** 2005 PRODUCTION MODEL
**G38G	SEE MP69381 B				
G33V	SEE MP69381 B				
G35U	SEE MP69381 B				
G38R	SEE MP69381 B				
G38T	AP4906	AP4074	AP24649	AP4906	

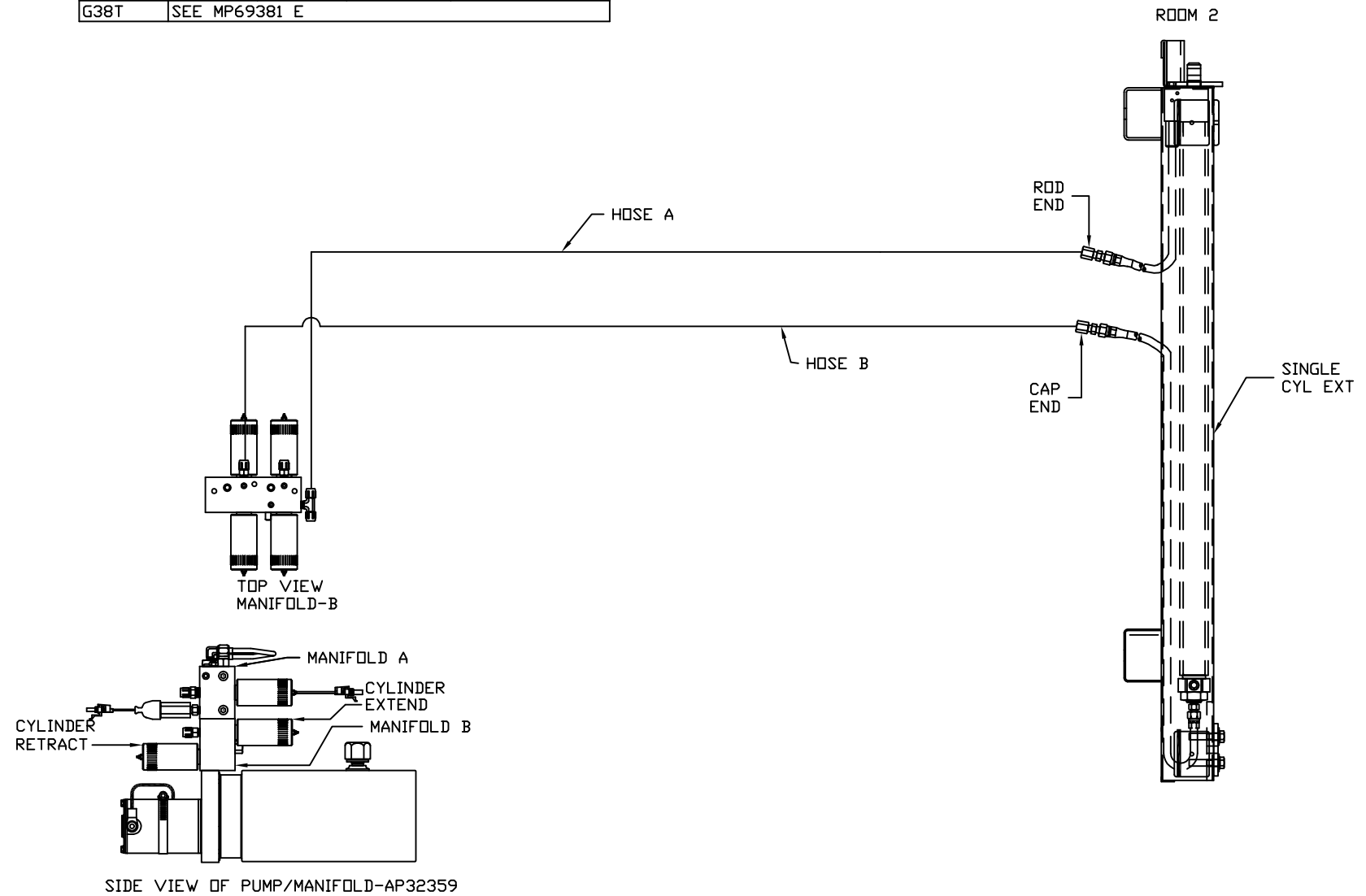
NOTE: HOSES C MUST BE HIGH PRESSURE HOSES OF EQUAL LENGTH AND DIAMETER

NOTE: HOSES D MUST BE EQUAL LENGTH AND DIAMETER



ORIENTATION  
 ← FRONT

MODEL	HOSE A	HOSE B	ROOM 2	SINGLE CYL EXT	** 2005 PRODUCTION MODEL
**G38G	AP4391	AP4163	AP23412	AP23909	
G33V	AP5561	AP8985	AP23412	AP23909	
G35U	AP5561	AP8985	AP16691	AP19079	
G38R	AP4391	AP4163	AP23412	AP23909	
G38T	SEE MP69381 E				



ORIENTATION  
← FRONT

MODEL	HOSE A	HOSE B	HOSES C	HOSES D	** 2005 PRODUCTION MODEL
**G38G	SEE MP69381 D				
G33V	SEE MP69381 D				
G35U	SEE MP69381 D				
G38R	SEE MP69381 D				
G38T	AP5965	AP7358	AP24649	AP4906	

NOTE: HOSES C MUST BE HIGH PRESSURE HOSES OF EQUAL LENGTH AND DIAMETER

NOTE: HOSES D MUST BE EQUAL LENGTH AND DIAMETER

