

MODEL	HOSE KIT	LF HOSE	RF HOSE	RR HOSE	LR HOSE
R36LD	AP19679	AP2443	AP5352	AP27563	AP4312
R36RD	AP19679	AP2443	AP5352	AP27563	AP4312
R40KD	AP24448	AP2443	AP5352	AP6117	AP5352
R40S	AP24448	AP2443	AP5352	AP6117	AP5352
S40KD	AP24448	AP2443	AP5352	AP6117	AP5352

LEVELING SYSTEM: AP34359

NO.	DATE	REVISION
1	20JAN14	CORRECTED HOSE ROUTING

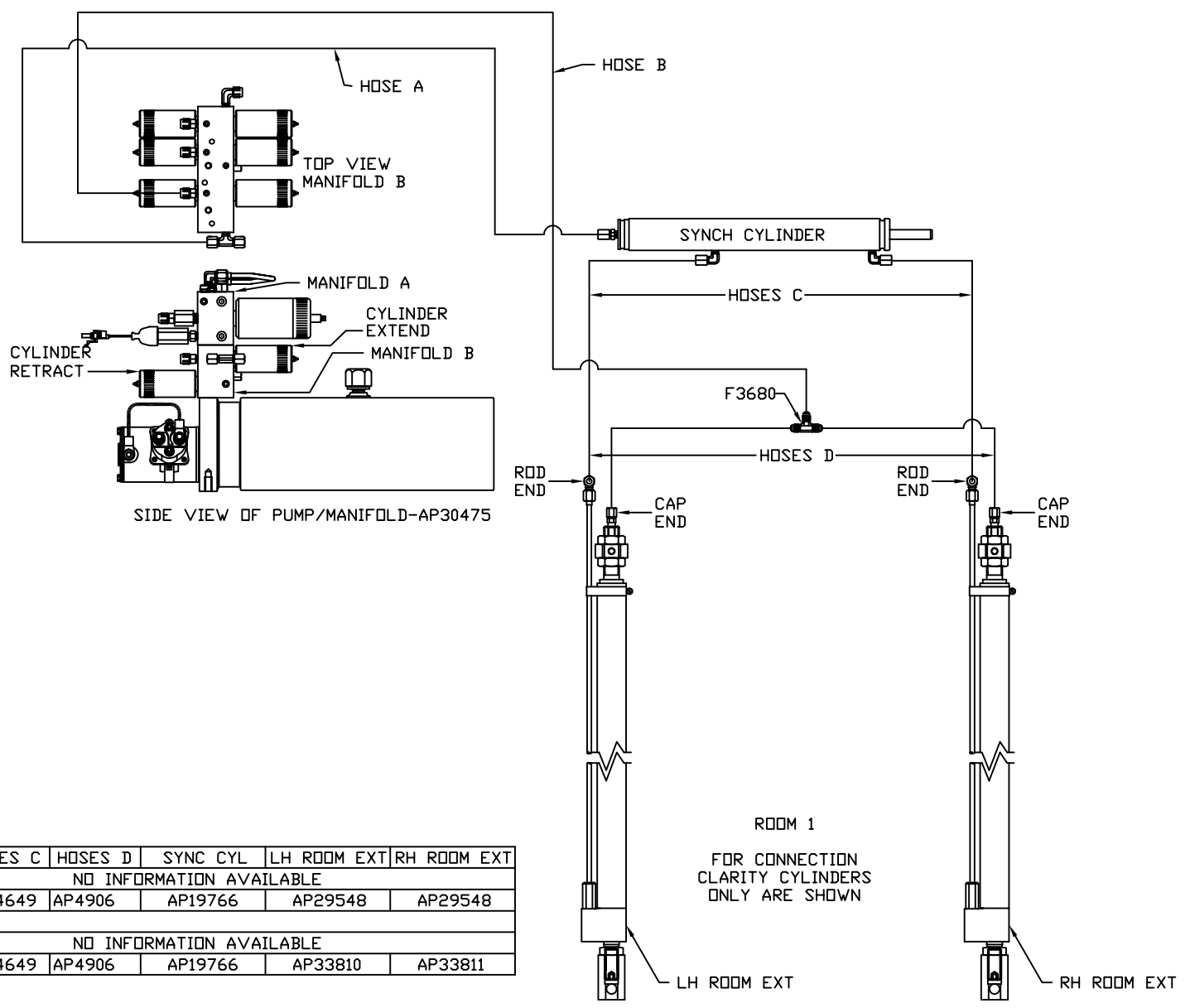
THE INFORMATION DISCLOSED ON THIS DRAWING IS CONFIDENTIAL AND MUST NOT BE DISCLOSED OR USED IN ANY MANNER WHICH WILL BE DETRIMENTAL TO THE HWH CORPORATION

			I-80 EXIT 267 SOUTH RT 1 MOSCOW, IOWA 52760		
SCALE 1:6	DATE 29APR05	DRAWN BY .			
<h2>HYD CONN DIAGRAM</h2>					
<h1>WINNEBAGO</h1>				DRAWING NUMBER MP69387 A/H	

ORIENTATION
 ← FRONT

NOTE: HOSES C MUST BE HIGH PRESSURE HOSES OF EQUAL LENGTH AND DIAMETER

NOTE: HOSES D MUST BE EQUAL LENGTH AND DIAMETER



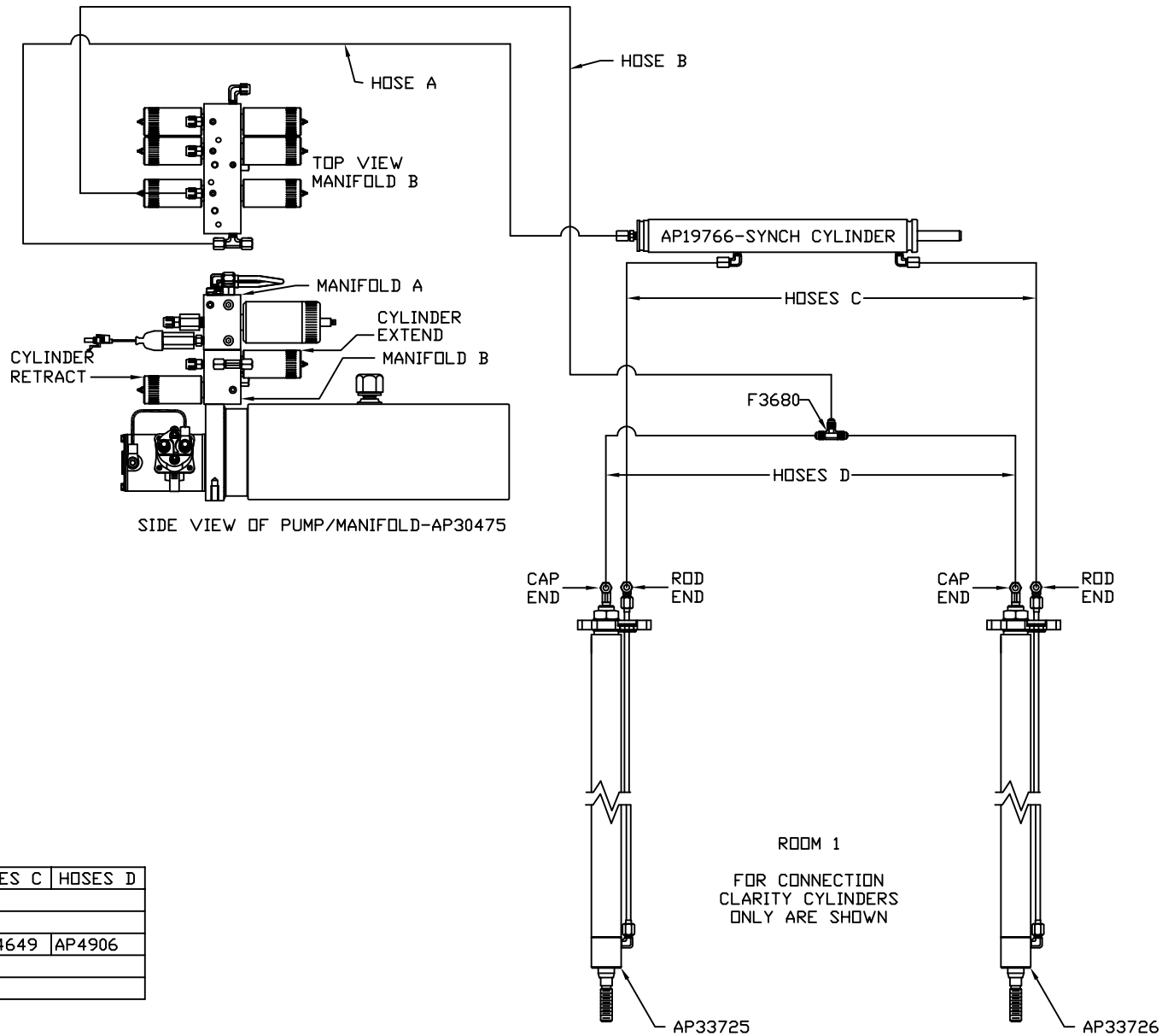
MODEL	HOSE A	HOSE B	HOSES C	HOSES D	SYNC CYL	LH ROOM EXT	RH ROOM EXT
R36LD	AP5924	AP11212	NO INFORMATION AVAILABLE				
R36RD	AP5924	AP11212	AP24649	AP4906	AP19766	AP29548	AP29548
R40KD	SEE MP69387 C						
R40S	AP5924	AP11212	NO INFORMATION AVAILABLE				
S40KD	AP5924	AP11212	AP24649	AP4906	AP19766	AP33810	AP33811

ROOM 1
 FOR CONNECTION
 CLARITY CYLINDERS
 ONLY ARE SHOWN

ORIENTATION
 ← FRONT

NOTE: HOSES C MUST BE HIGH PRESSURE HOSES OF EQUAL LENGTH AND DIAMETER

NOTE: HOSES D MUST BE EQUAL LENGTH AND DIAMETER



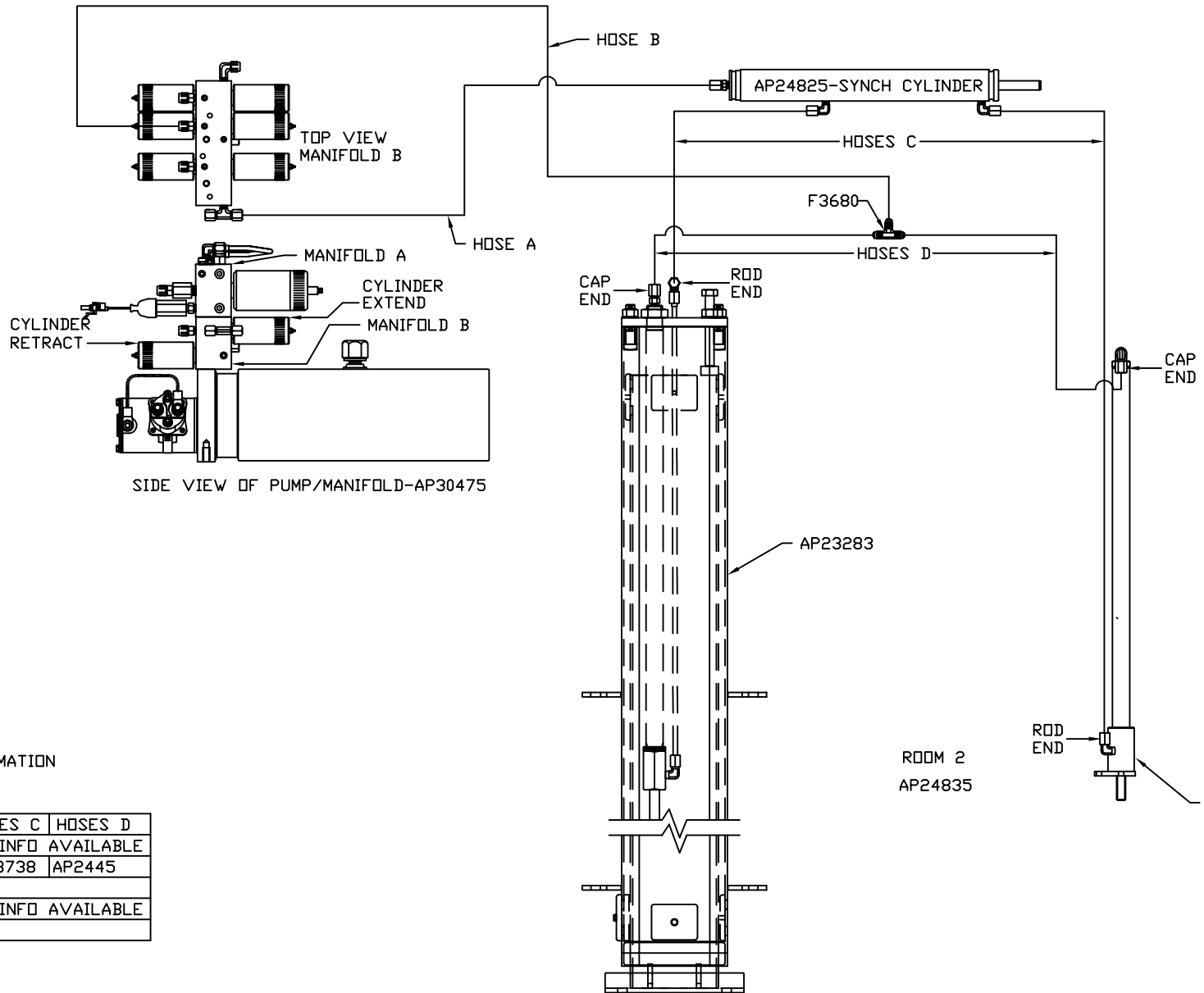
MODEL	HOSE A	HOSE B	HOSES C	HOSES D
R36LD	SEE MP69387 B			
R36RD	SEE MP69387 B			
R40KD	AP5924	AP11212	AP24649	AP4906
R40S	SEE MP69387 B			
S40KD	SEE MP69387 B			

ORIENTATION

← FRONT

NOTE: HOSES C MUST BE HIGH PRESSURE HOSES OF EQUAL LENGTH AND DIAMETER

NOTE: HOSES D MUST BE EQUAL LENGTH AND DIAMETER



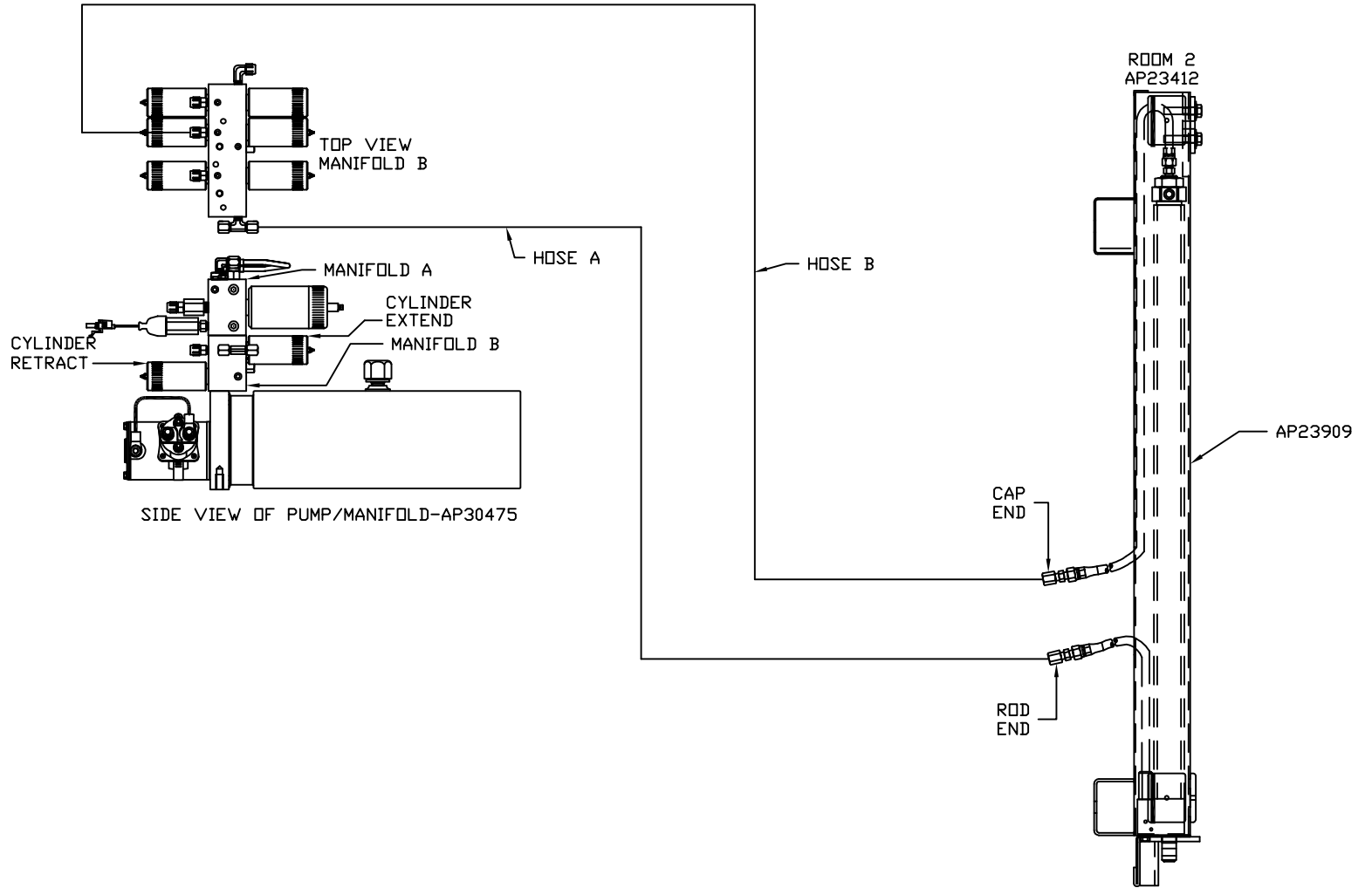
NOTE: NO ROOM EXTENSION INFORMATION ON MODELS R36LD AND R40S

MODEL	HOSE A	HOSE B	HOSES C	HOSES D
R36LD	AP6117	AP4669	NO INFO AVAILABLE	
R36RD	AP6117	AP4669	AP23738	AP2445
R40KD	SEE MP69387 E			
R40S	AP6217	AP5925	NO INFO AVAILABLE	
S40KD	SEE MP69387 E			

ROOM 2
AP24835

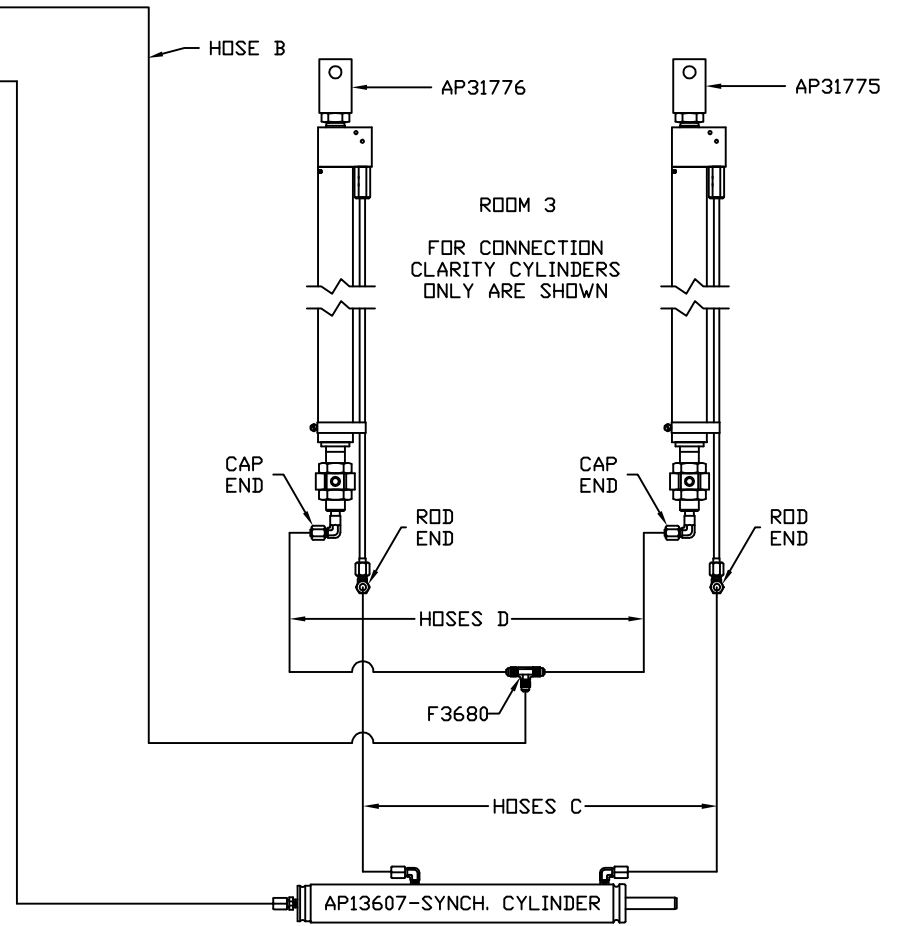
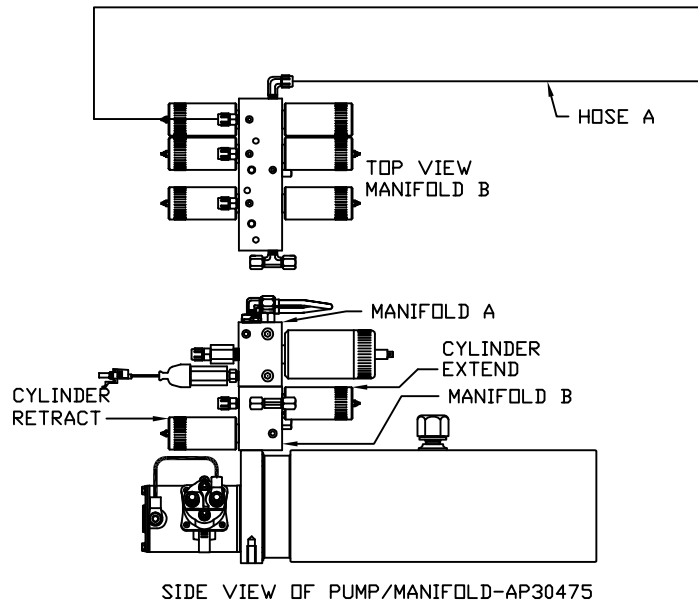
ORIENTATION

← FRONT



MODEL	HOSE A	HOSE B
R36LD	SEE MP69387 D	
R36RD	SEE MP69387 D	
R40KD	AP6217	AP5925
R40S	SEE MP69387 D	
S40KD	AP6217	AP5925

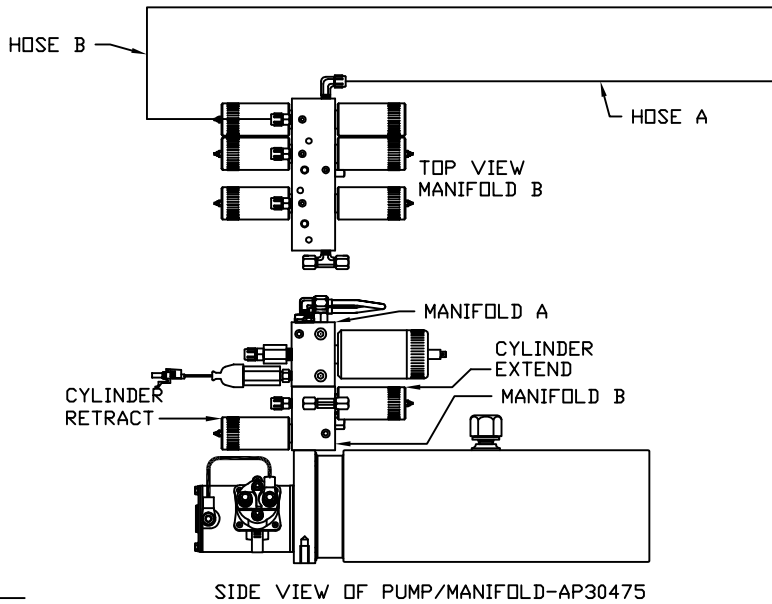
ORIENTATION
 ← FRONT



NOTE: NO ROOM EXTENSION INFORMATION
 ON MODELS R36LD AND R40S

MODEL	HOSE A	HOSE B	HOSES C	HOSES D
R36LD	AP5965	AP7358	NO INFO AVAILABLE	
R36RD	AP5965	AP7358	AP24649	AP4906
R40KD	SEE MP69387 G			
R40S	AP5965	AP7358	NO INFO AVAILABLE	
S40KD	SEE MP69387 H			

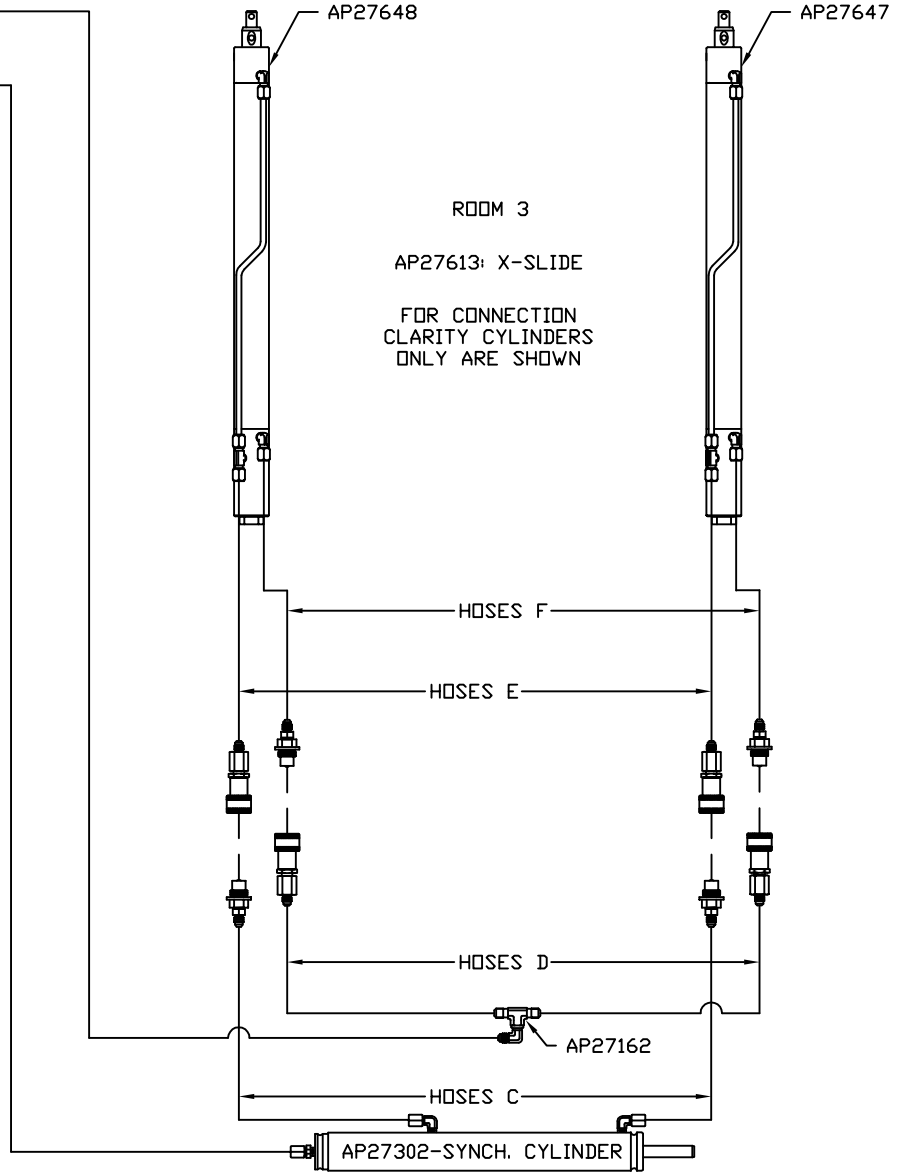
ORIENTATION
← FRONT



NOTES

1. HOSES C MUST BE HIGH PRESSURE HOSES OF EQUAL LENGTH AND DIAMETER
2. HOSES D MUST BE EQUAL LENGTH AND DIAMETER
3. HOSES E AND F ARE INCLUDED WITH THE ROOM EXTENSION MECHANISM
4. HOSES E MUST BE HIGH PRESSURE HOSES OF EQUAL LENGTH AND DIAMETER
5. HOSES F MUST BE EQUAL LENGTH AND DIAMETER

MODEL	HOSE A	HOSE B	HOSES C	HOSES D	HOSES E	HOSES F
R36LD	SEE MP69387 F					
R36RD	SEE MP69387 F					
R40KD	AP5965	AP7358	AP29207	AP29206	AP29209	AP29208
R40S	SEE MP69387 F					
S40KD	SEE MP69387 H					

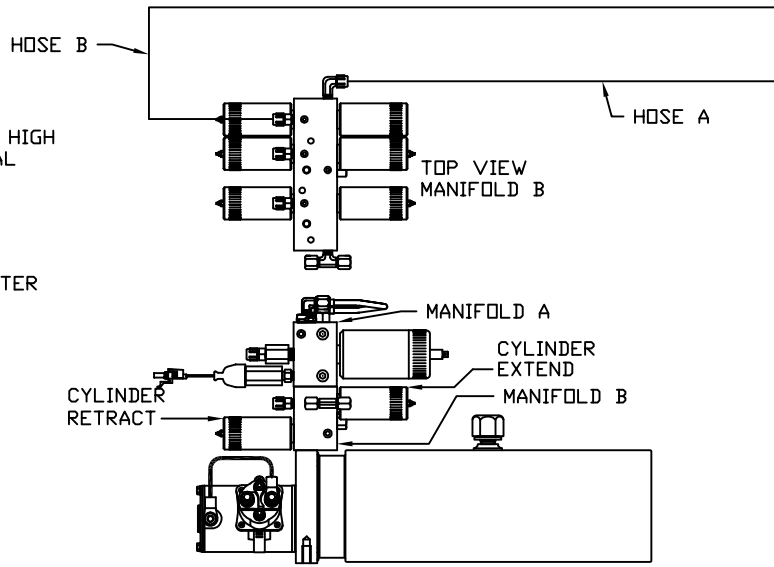


ORIENTATION

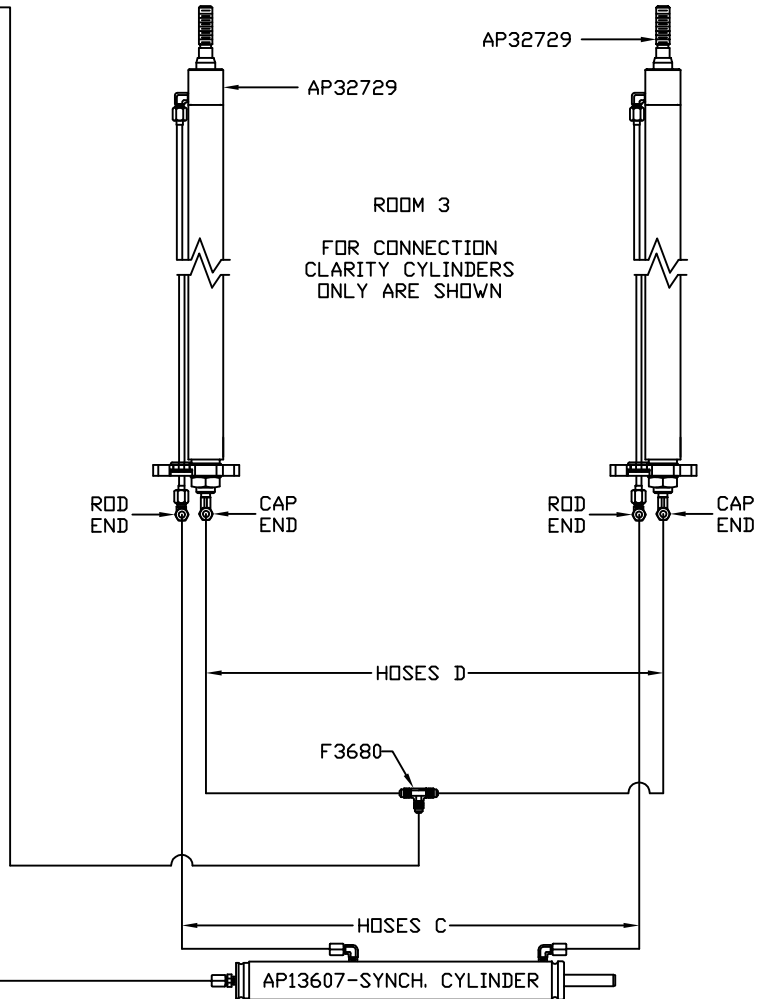
← FRONT

NOTE: HOSES C MUST BE HIGH PRESSURE HOSES OF EQUAL LENGTH AND DIAMETER

NOTE: HOSES D MUST BE EQUAL LENGTH AND DIAMETER



SIDE VIEW OF PUMP/MANIFOLD-AP30475



MODEL	HOSE A	HOSE B	HOSES C	HOSES D
R36LD	SEE MP69387 F			
R36RD	SEE MP69387 F			
R40KD	SEE MP69387 G			
R40S	SEE MP69387 F			
S40KD	AP5965	AP7358	AP24642	AP5384