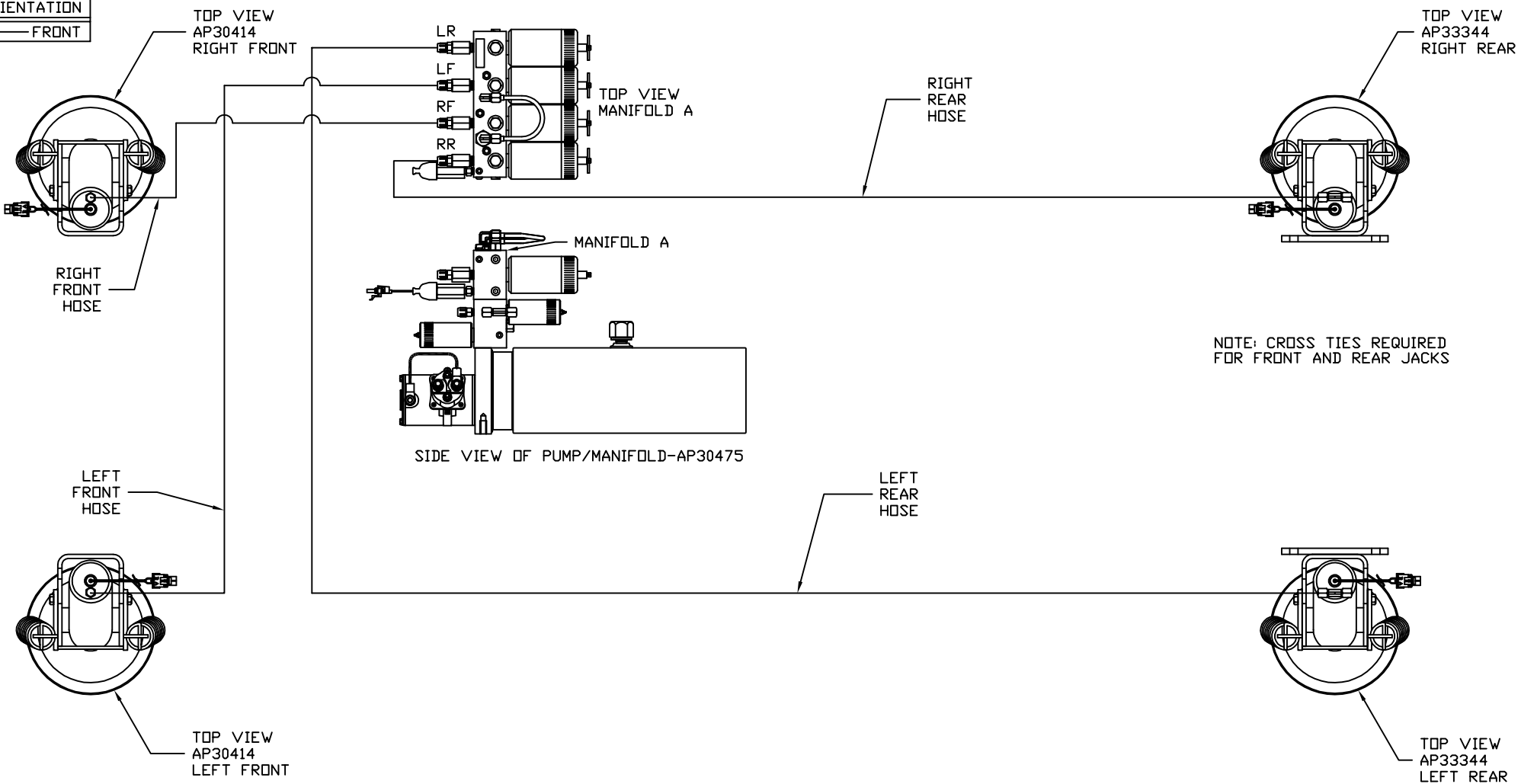


ORIENTATION
← FRONT



NOTE: CROSS TIES REQUIRED FOR FRONT AND REAR JACKS

MODEL	HOSE KIT	LF HOSE	RF HOSE	RR HOSE	LR HOSE
P39K	AP24448	AP2443	AP5352	AP6117	AP4669
P39F	AP24448	AP2443	AP5352	AP6117	AP4669

LEVELING SYSTEM: AP31549

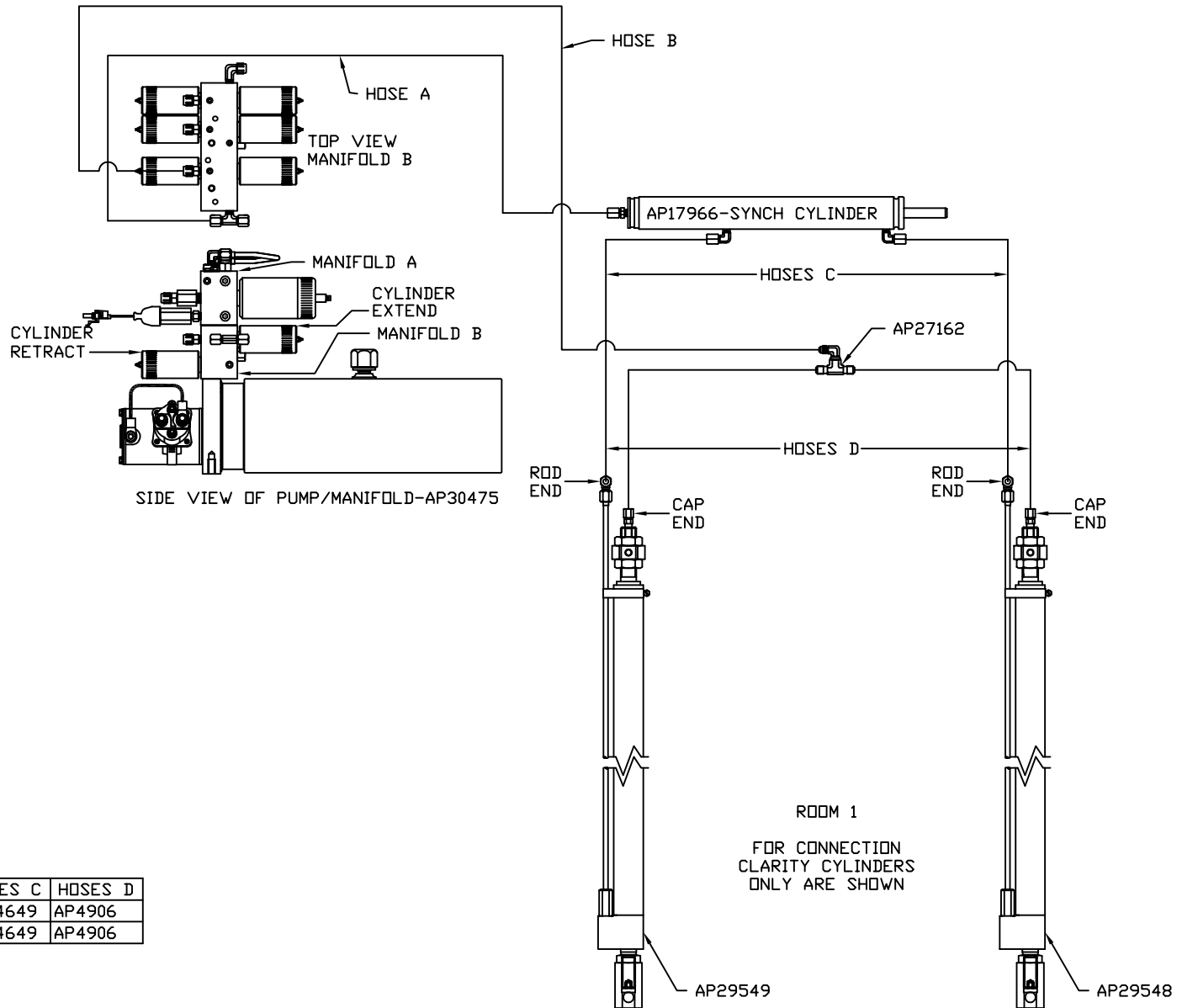
		HWH		I-80 EXIT 267 SOUTH RT 1 MOSCOW, IOWA 52760	
		SCALE 1:6	DATE 12MAY05	DRAWN BY .	
		HYD CONN DIAGRAM			
NO.	DATE	REVISION			
THE INFORMATION DISCLOSED ON THIS DRAWING IS CONFIDENTIAL AND MUST NOT BE DISCLOSED OR USED IN ANY MANNER WHICH WILL BE DETRIMENTAL TO THE HWH CORPORATION					
WINNEBAGO				DRAWING NUMBER MP69400 A/E	

ORIENTATION

← FRONT

NOTE: HOSES C MUST BE HIGH PRESSURE HOSES OF EQUAL LENGTH AND DIAMETER

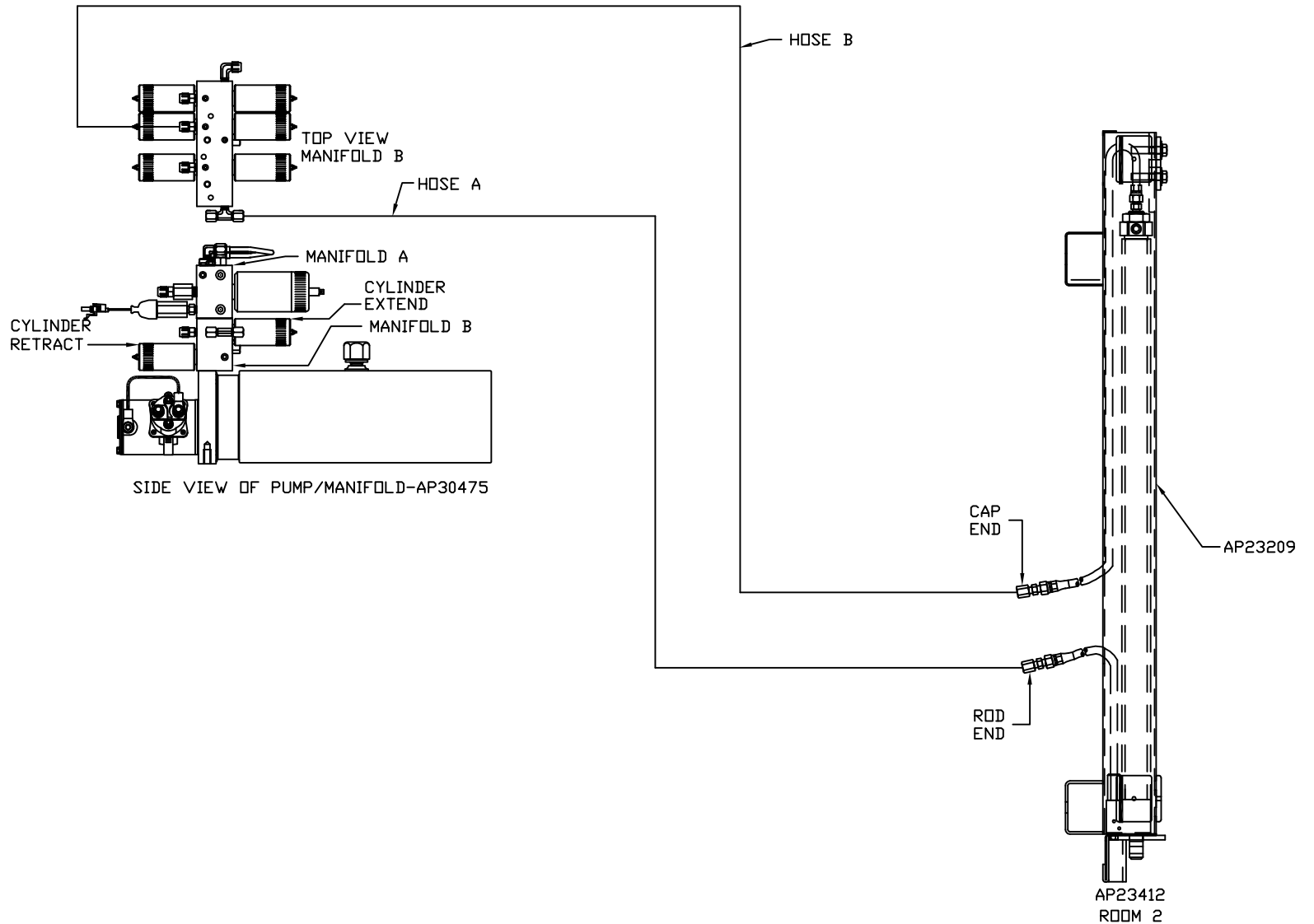
NOTE: HOSES D MUST BE EQUAL LENGTH AND DIAMETER



MODEL	HOSE A	HOSE B	HOSES C	HOSES D
P39K	AP5924	AP11212	AP24649	AP4906
P39F	AP5924	AP11212	AP24649	AP4906

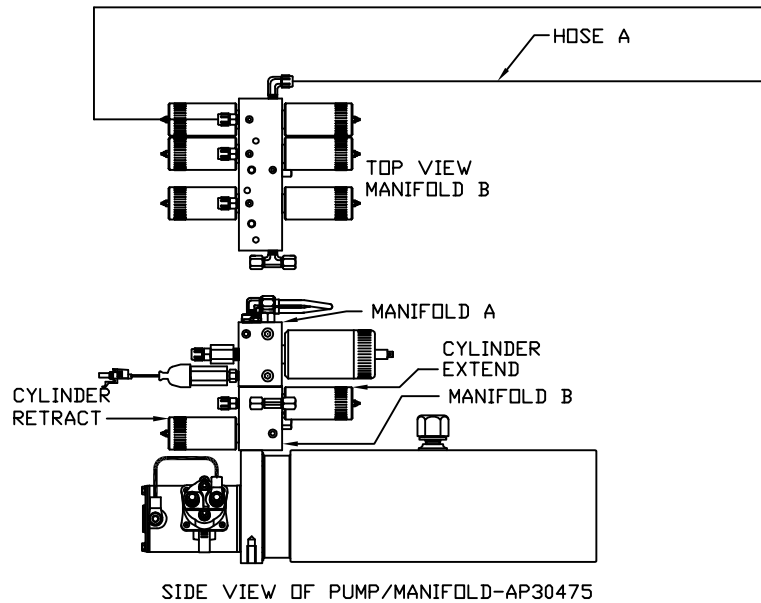
ORIENTATION

← FRONT



MODEL	HOSE A	HOSE B
P39K	AP6217	AP5925
P39F	AP6217	AP5925

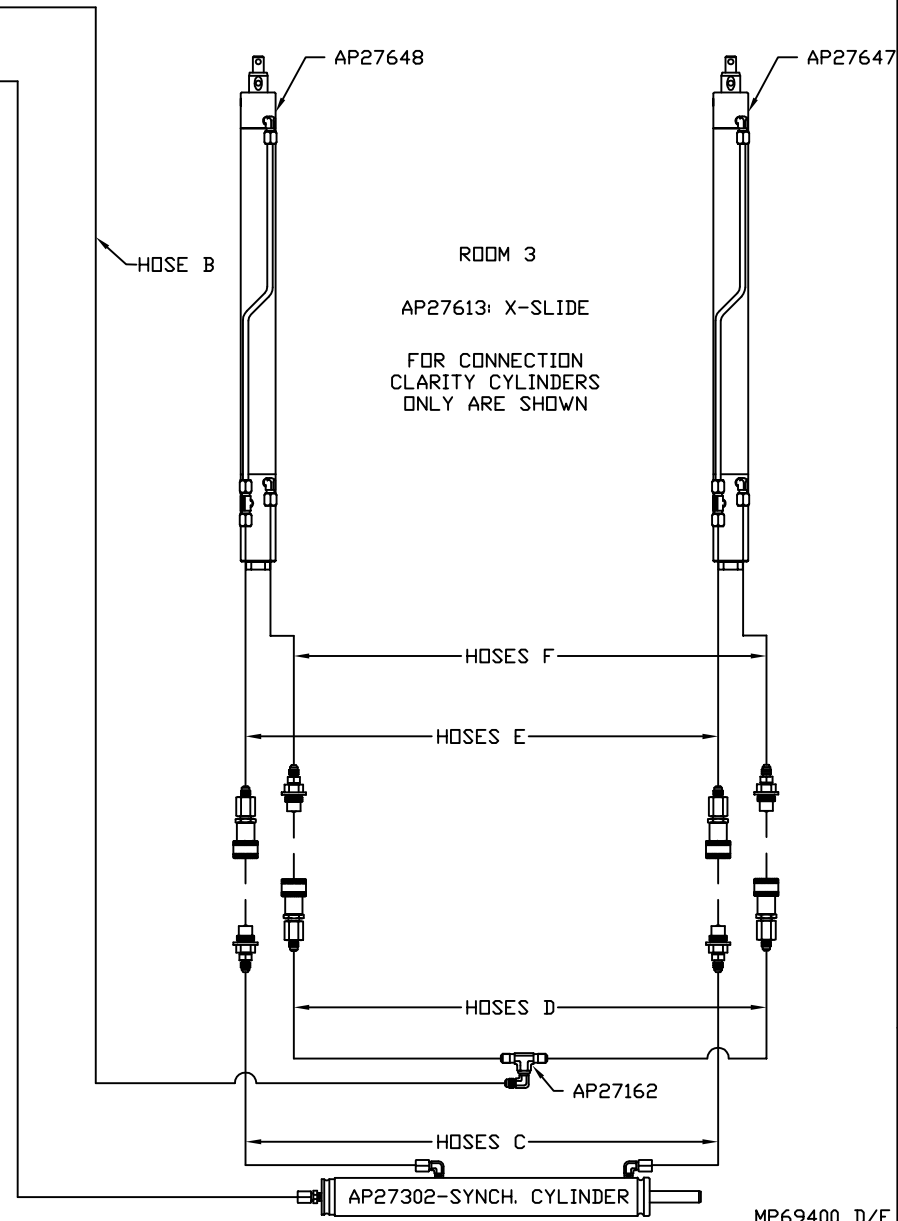
ORIENTATION
← FRONT



NOTES

1. HOSES C MUST BE HIGH PRESSURE HOSES OF EQUAL LENGTH AND DIAMETER
2. HOSES D MUST BE EQUAL LENGTH AND DIAMETER
3. HOSES E AND F ARE INCLUDED WITH THE ROOM EXTENSION MECHANISM
4. HOSES E MUST BE HIGH PRESSURE HOSES OF EQUAL LENGTH AND DIAMETER
5. HOSES F MUST BE EQUAL LENGTH AND DIAMETER

MODEL	HOSE A	HOSE B	HOSES C	HOSES D	HOSES E	HOSES F
P39K	AP5965	AP7358	AP29207	AP29206	AP29209	AP29208
P39F	SEE MP69400 E					

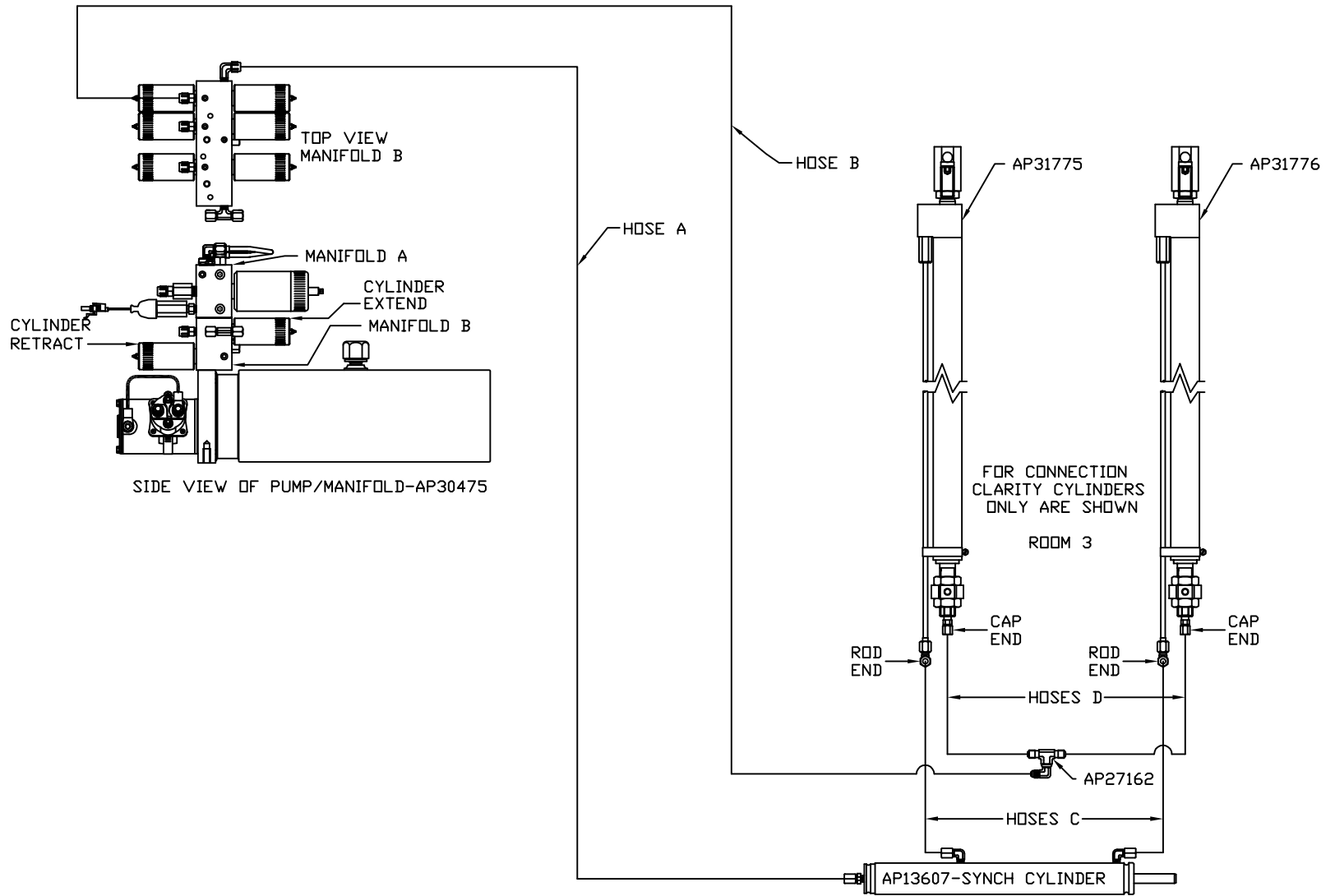


ORIENTATION

← FRONT

NOTE: HOSES C MUST BE HIGH PRESSURE HOSES OF EQUAL LENGTH AND DIAMETER

NOTE: HOSES D MUST BE EQUAL LENGTH AND DIAMETER



MODEL	HOSE A	HOSE B	HOSES C	HOSES D
P39K	SEE MP69400 D			
P39F	AP5965	AP7358	AP24649	AP4906