

| MODEL | HOSE KIT | LF HOSE | RF HOSE | RR HOSE | LR HOSE |
|-------|----------|---------|---------|---------|---------|
| S34TD | AP19679  | AP2443  | AP5352  | AP27563 | AP4312  |
| S36LD | AP19679  | AP2443  | AP5352  | AP27563 | AP4312  |
| S36GD | AP19679  | AP2443  | AP5352  | AP27563 | AP4312  |
| S40QD | AP24448  | AP2443  | AP5352  | AP6117  | AP5352  |
| S40WD | AP24448  | AP2443  | AP5352  | AP6117  | AP5352  |

LEVELING SYSTEM: AP31425

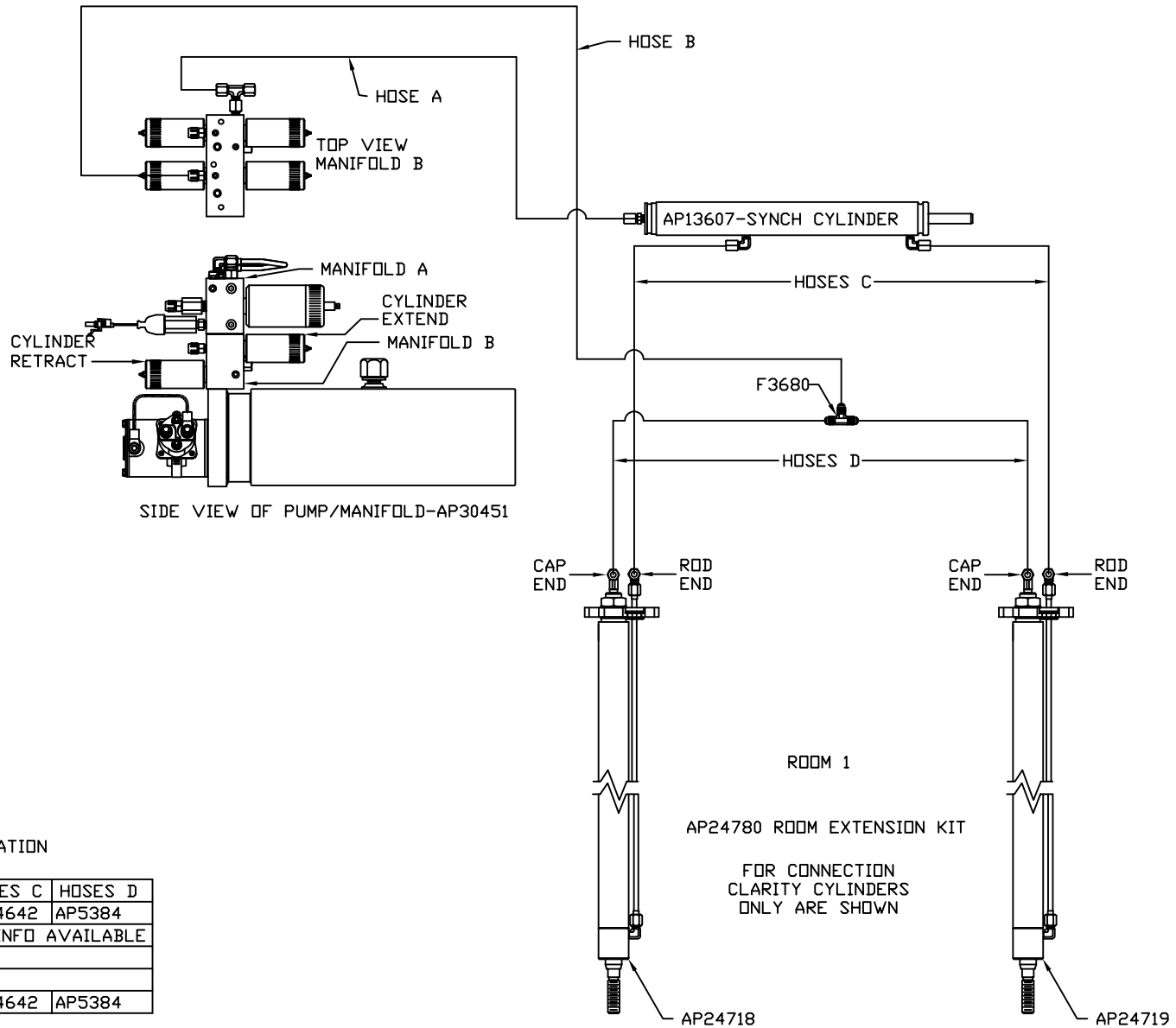
|  |      |                  |              |  |  |
|--|------|------------------|--------------|--|--|
|  |      | HWH              |              | I-80 EXIT 267 SOUTH<br>RT 1 MOSCOW, IOWA 52760 |  |
|  |      | SCALE 1:6        | DATE 12MAY05 | DRAWN BY .                                     |  |
|  |      | HYD CONN DIAGRAM |              |  |  |
| NO.  | DATE | REVISION         |              |  |  |
|  |      | WINNEBAGO        |              | DRAWING NUMBER<br>MP69401 A/F                  |  |
| THE INFORMATION DISCLOSED ON THIS DRAWING IS CONFIDENTIAL AND MUST NOT BE DISCLOSED OR USED IN ANY MANNER WHICH WILL BE DETRIMENTAL TO THE HWH CORPORATION |      |                  |              |  |  |

**ORIENTATION**

← FRONT

NOTE: HOSES C MUST BE HIGH PRESSURE HOSES OF EQUAL LENGTH AND DIAMETER

NOTE: HOSES D MUST BE EQUAL LENGTH AND DIAMETER



NOTE: NO ROOM EXTENSION INFORMATION AVAILABLE ON MODEL S36LD

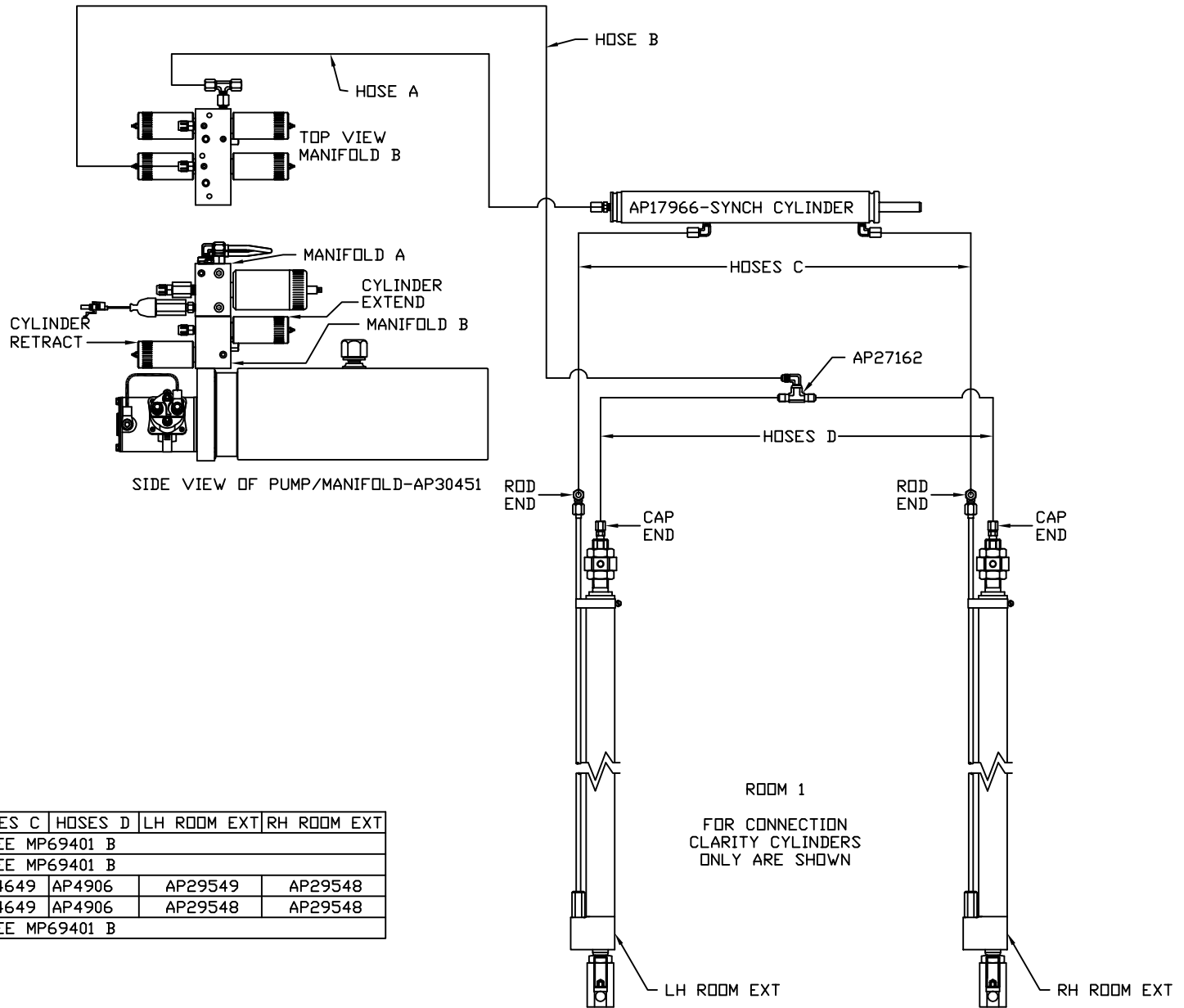
| MODEL | HOSE A        | HOSE B  | HOSES C           | HOSES D |
|-------|---------------|---------|-------------------|---------|
| S34TD | AP5924        | AP11212 | AP24642           | AP5384  |
| S36LD | AP5924        | AP11212 | NO INFO AVAILABLE |         |
| S36GD | SEE MP69401 C |         |                   |         |
| S40QD | SEE MP69401 C |         |                   |         |
| S40WD | AP5924        | AP11212 | AP24642           | AP5384  |

ORIENTATION

← FRONT

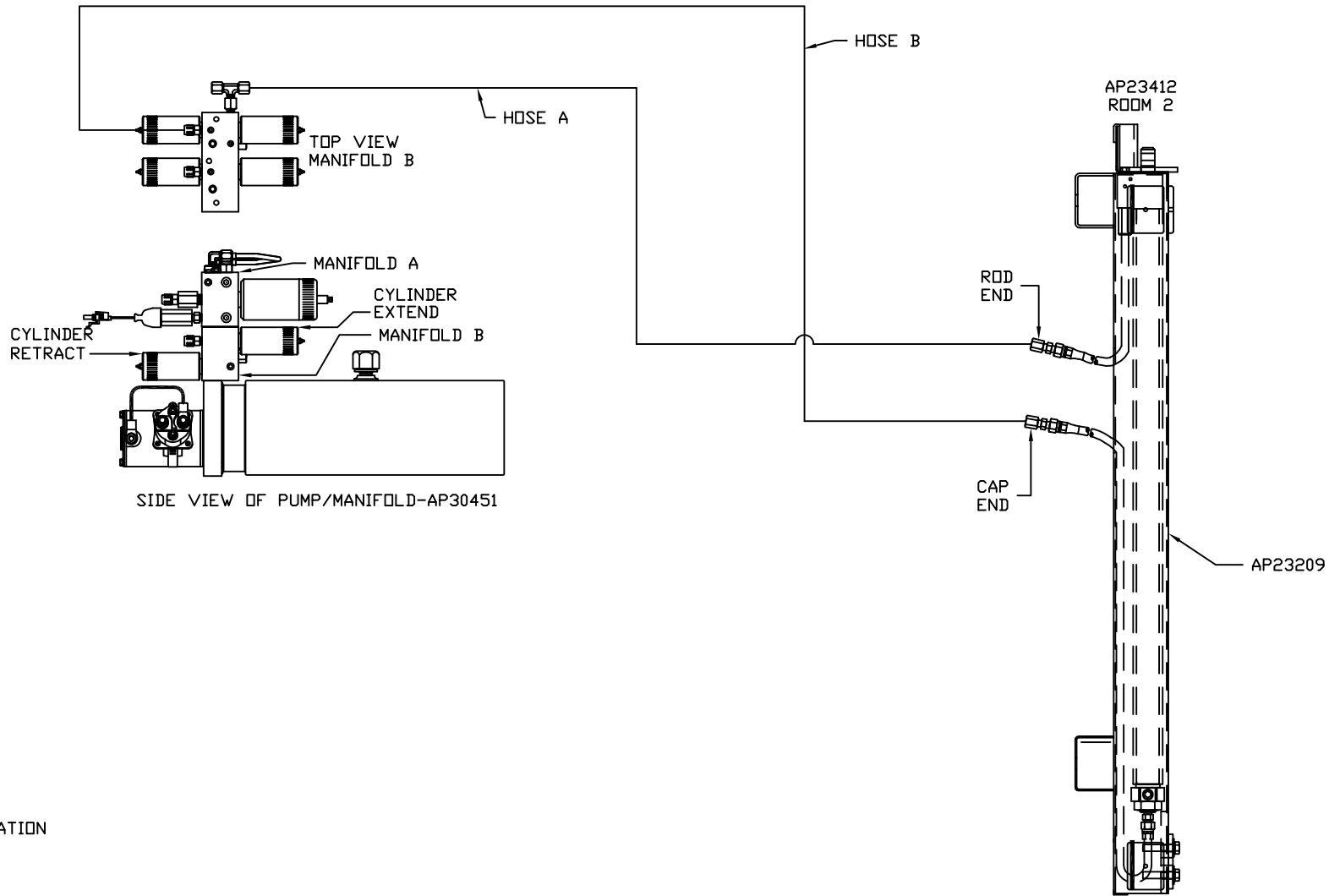
NOTE: HOSES C MUST BE HIGH PRESSURE HOSES OF EQUAL LENGTH AND DIAMETER

NOTE: HOSES D MUST BE EQUAL LENGTH AND DIAMETER



| MODEL | HOSE A | HOSE B  | HOSES C       | HOSES D | LH ROOM EXT | RH ROOM EXT |
|-------|--------|---------|---------------|---------|-------------|-------------|
| S34TD |        |         | SEE MP69401 B |         |             |             |
| S36LD |        |         | SEE MP69401 B |         |             |             |
| S36GD | AP5924 | AP11212 | AP24649       | AP4906  | AP29549     | AP29548     |
| S40QD | AP5924 | AP11212 | AP24649       | AP4906  | AP29548     | AP29548     |
| S40WD |        |         | SEE MP69401 B |         |             |             |

ORIENTATION  
 ← FRONT



NOTE: NO ROOM EXTENSION INFORMATION  
 AVAILABLE ON MODEL S36LD

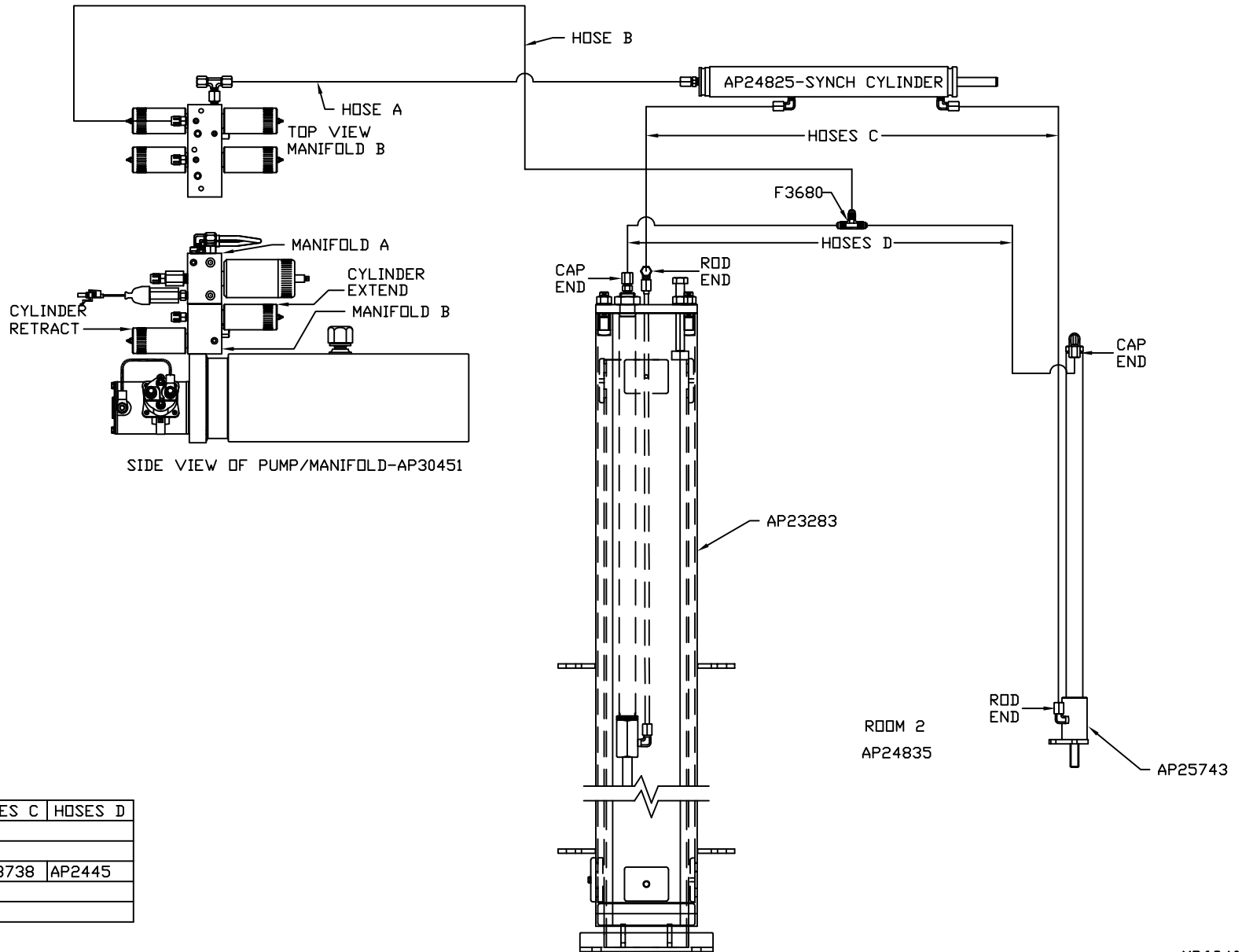
| MODEL | HOSE A        | HOSE B |
|-------|---------------|--------|
| S34TD | AP4669        | AP6117 |
| S36LD | AP4669        | AP6117 |
| S36GD | SEE MP69401 E |        |
| S40QD | SEE MP69401 F |        |
| S40WD | SEE MP69401 F |        |

ORIENTATION

← FRONT

NOTE: HOSES C MUST BE HIGH PRESSURE HOSES OF EQUAL LENGTH AND DIAMETER

NOTE: HOSES D MUST BE EQUAL LENGTH AND DIAMETER



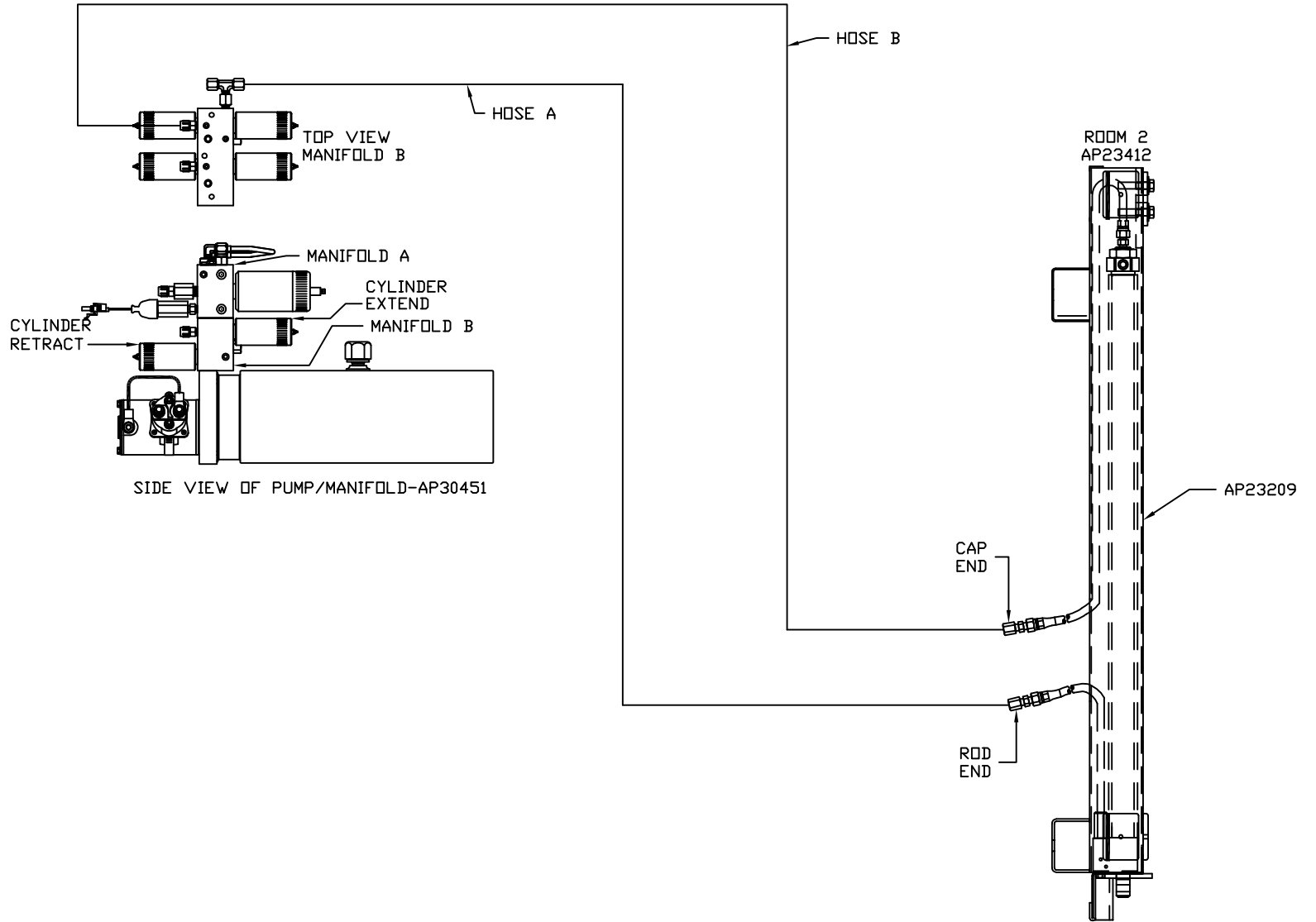
| MODEL | HOSE A        | HOSE B | HOSES C | HOSES D |
|-------|---------------|--------|---------|---------|
| S34TD | SEE MP69401 D |        |         |         |
| S36LD | SEE MP69401 D |        |         |         |
| S36GD | AP4669        | AP6117 | AP23738 | AP2445  |
| S40QD | SEE MP69401 F |        |         |         |
| S40WD | SEE MP69401 F |        |         |         |

ORIENTATION

← FRONT

NOTE: HOSES C MUST BE HIGH PRESSURE HOSES OF EQUAL LENGTH AND DIAMETER

NOTE: HOSES D MUST BE EQUAL LENGTH AND DIAMETER



| MODEL | HOSE A        | HOSE B |
|-------|---------------|--------|
| S34TD | SEE MP69401 D |        |
| S36LD | SEE MP69401 D |        |
| S36GD | SEE MP69401 E |        |
| S40QD | AP6217        | AP5925 |
| S40WD | AP6217        | AP5925 |