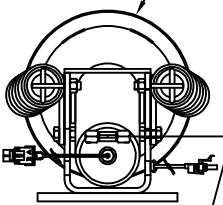
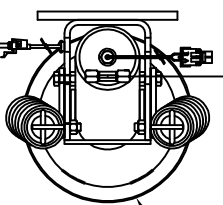


ORIENTATION
← FRONT

TOP VIEW
AP33345
RIGHT FRONT

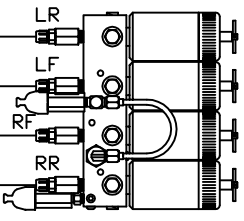


RIGHT FRONT HOSE

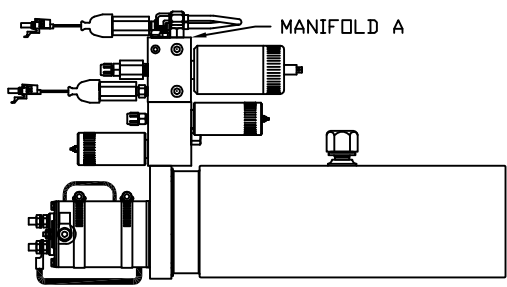


LEFT FRONT HOSE

TOP VIEW
AP33345
LEFT FRONT



TOP VIEW
MANIFOLD A

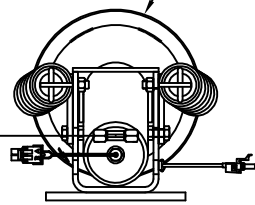


SIDE VIEW OF PUMP/MANIFOLD-AP30118

RIGHT REAR HOSE

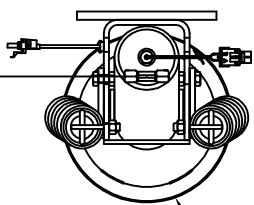
LEFT REAR HOSE

TOP VIEW
AP33345
RIGHT REAR



NOTE: CROSS TIES REQUIRED FOR FRONT AND REAR JACKS

TOP VIEW
AP33345
LEFT REAR



| | | | | | |
|-------|----------|---------|---------|---------|---------|
| MODEL | HOSE KIT | LF HOSE | RF HOSE | RR HOSE | LR HOSE |
| S36GD | AP19679 | AP2443 | AP5352 | AP27563 | AP4312 |

LEVELING SYSTEM: AP32702

| | | |
|-----|------|----------|
| | | |
| | | |
| | | |
| | | |
| NO. | DATE | REVISION |

HWH I-80 EXIT 267 SOUTH
RT 1 MOSCOW, IOWA 52760

SCALE 1:6 DATE 12MAY05 DRAWN BY .

HYD CONN DIAGRAM

THE INFORMATION DISCLOSED ON THIS DRAWING IS CONFIDENTIAL AND MUST NOT BE DISCLOSED OR USED IN ANY MANNER WHICH WILL BE DETRIMENTAL TO THE HWH CORPORATION

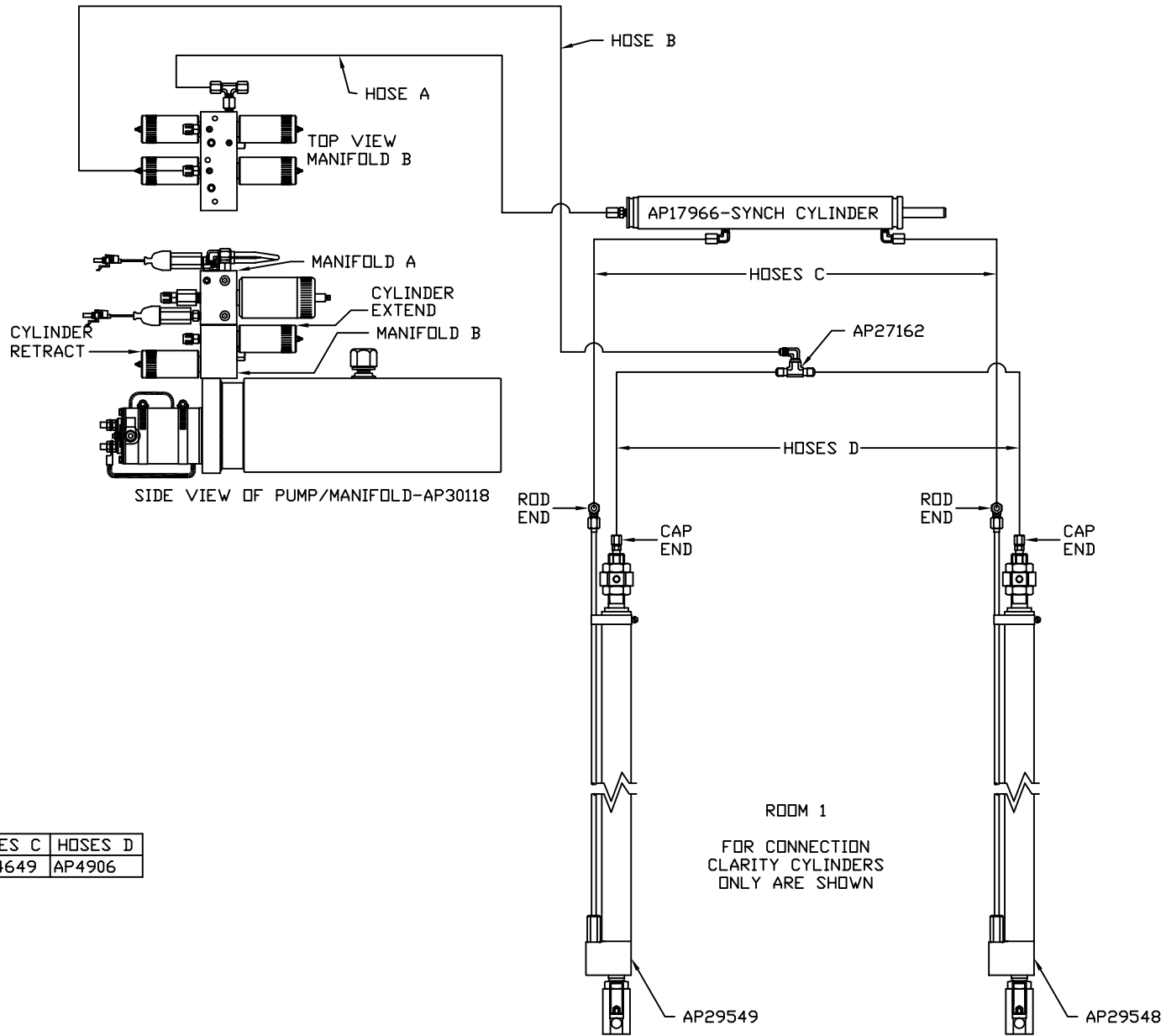
WINNEBAGO DRAWING NUMBER MP69402 A/C

ORIENTATION

← FRONT

NOTE: HOSES C MUST BE HIGH PRESSURE HOSES OF EQUAL LENGTH AND DIAMETER

NOTE: HOSES D MUST BE EQUAL LENGTH AND DIAMETER



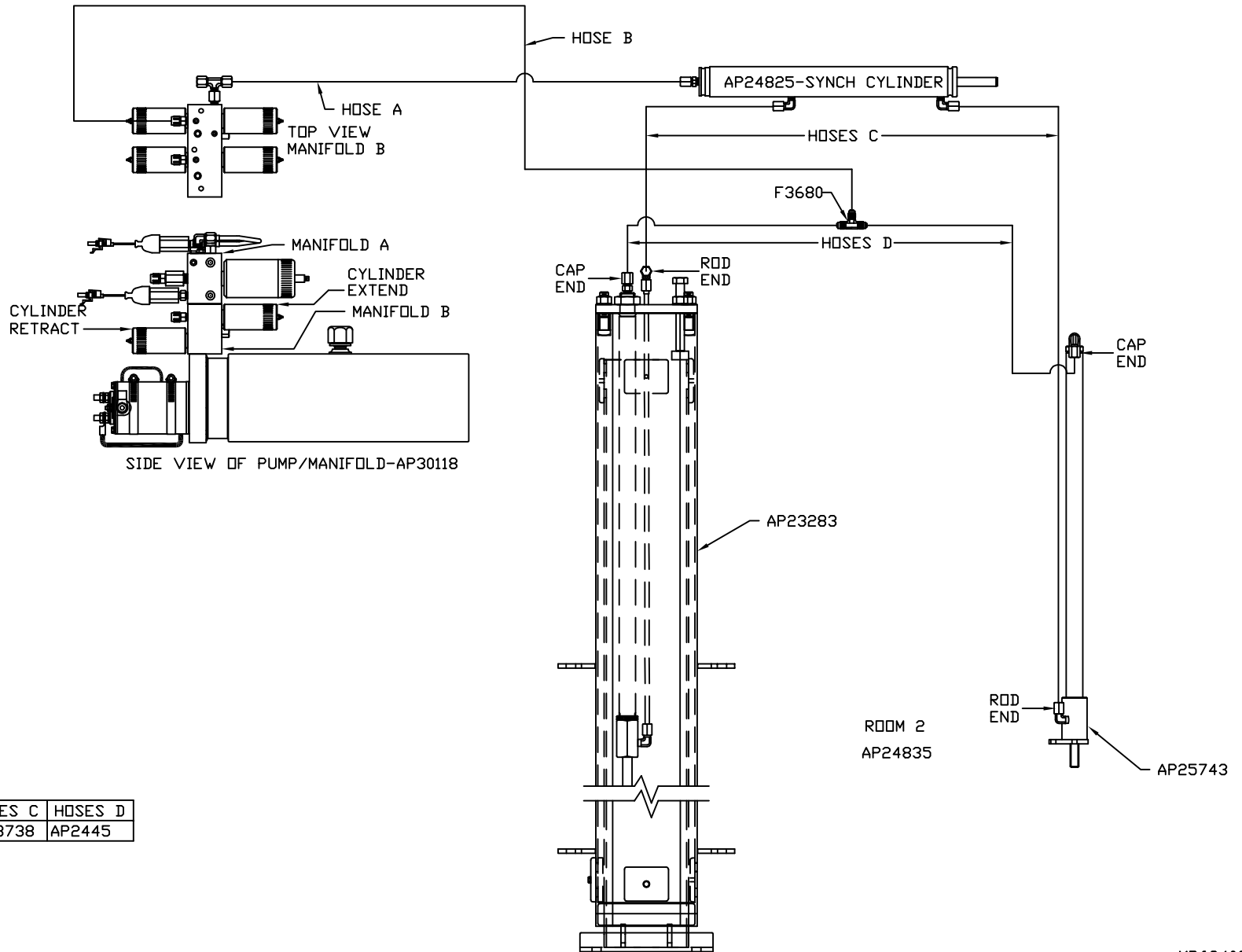
| MODEL | HOSE A | HOSE B | HOSES C | HOSES D |
|-------|--------|---------|---------|---------|
| S36GD | AP5924 | AP11212 | AP24649 | AP4906 |

ORIENTATION

← FRONT

NOTE: HOSES C MUST BE HIGH PRESSURE HOSES OF EQUAL LENGTH AND DIAMETER

NOTE: HOSES D MUST BE EQUAL LENGTH AND DIAMETER



| MODEL | HOSE A | HOSE B | HOSES C | HOSES D |
|-------|--------|--------|---------|---------|
| S36GD | AP4669 | AP6117 | AP23738 | AP2445 |