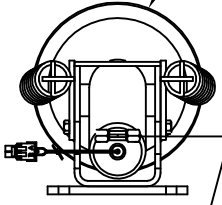
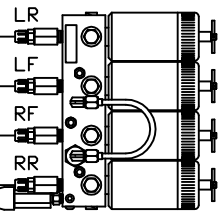


ORIENTATION  
← FRONT

TOP VIEW  
AP33344  
RIGHT FRONT



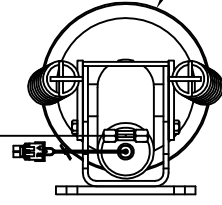
RIGHT  
FRONT  
HOSE



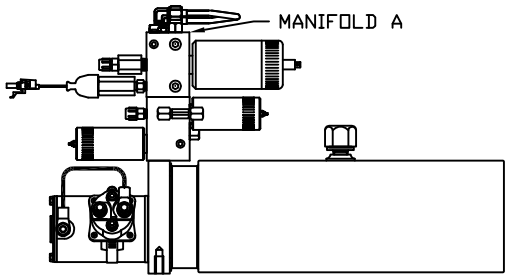
TOP VIEW  
MANIFOLD A

RIGHT  
REAR  
HOSE

TOP VIEW  
AP33344  
RIGHT REAR



NOTE: CROSS TIES REQUIRED  
FOR FRONT AND REAR JACKS



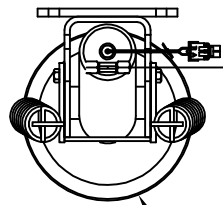
MANIFOLD A

SIDE VIEW OF PUMP/MANIFOLD-AP30475

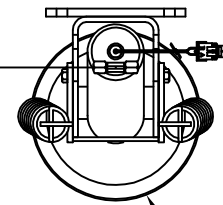
LEFT  
REAR  
HOSE

LEFT  
FRONT  
HOSE

TOP VIEW  
AP33344  
LEFT FRONT



TOP VIEW  
AP33344  
LEFT REAR



MODEL	HOSE KIT	LF HOSE	RF HOSE	RR HOSE	LR HOSE
S40KD	AP24448	AP2443	AP5352	AP6117	AP5352
S40AD	AP24448	AP2443	AP5352	AP6117	AP5352

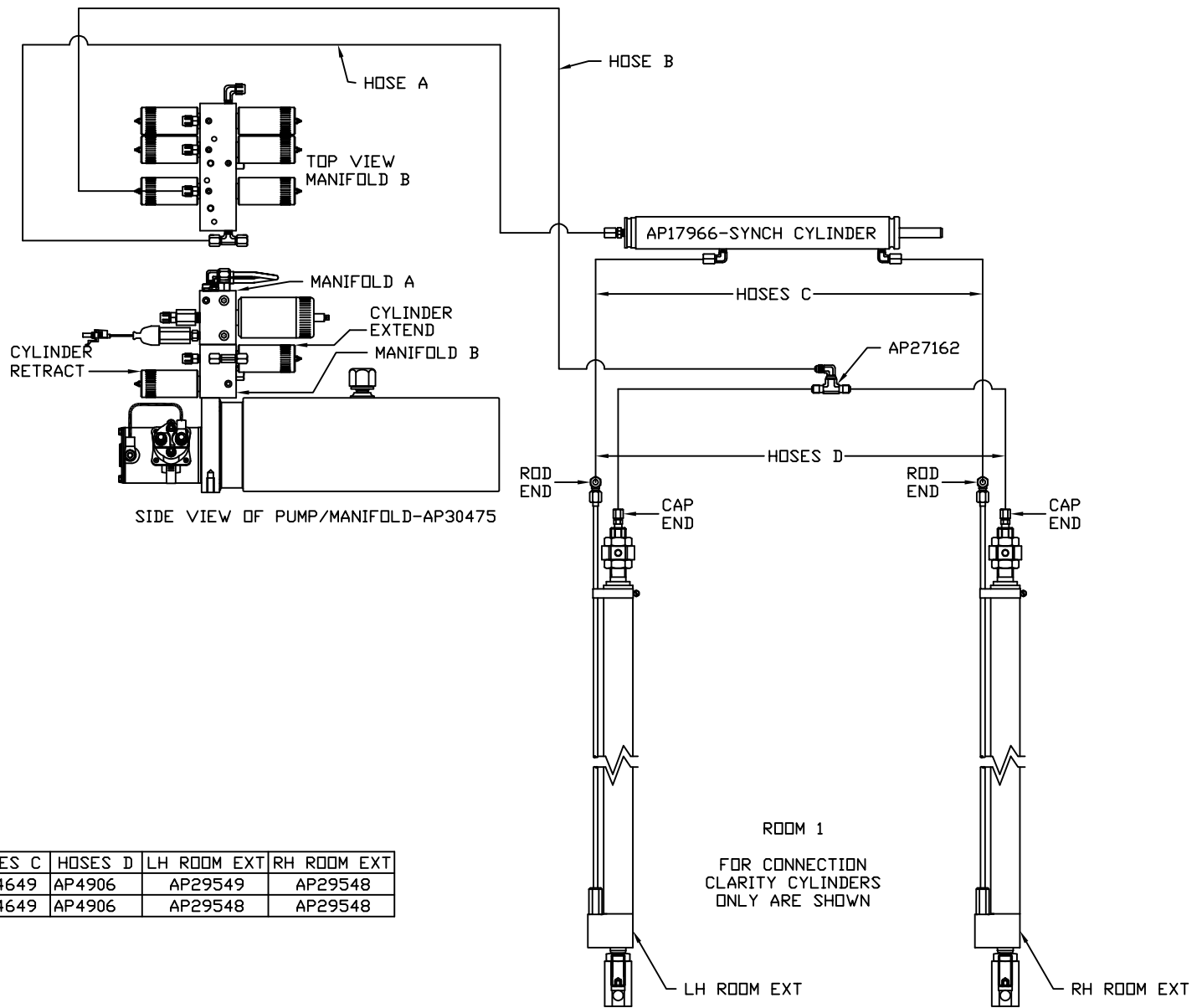
LEVELING SYSTEM: AP31427

		HWH		I-80 EXIT 267 SOUTH RT 1 MOSCOW, IOWA 52760	
		SCALE 1:6	DATE 12MAY05	DRAWN BY .	
		HYD CONN DIAGRAM			
NO.	DATE	REVISION			
		WINNEBAGO		DRAWING NUMBER MP69403 A/D	
<small>THE INFORMATION DISCLOSED ON THIS DRAWING IS CONFIDENTIAL AND MUST NOT BE DISCLOSED OR USED IN ANY MANNER WHICH WILL BE DETRIMENTAL TO THE HWH CORPORATION</small>					

ORIENTATION  
 ← FRONT

NOTE: HOSES C MUST BE HIGH PRESSURE HOSES OF EQUAL LENGTH AND DIAMETER

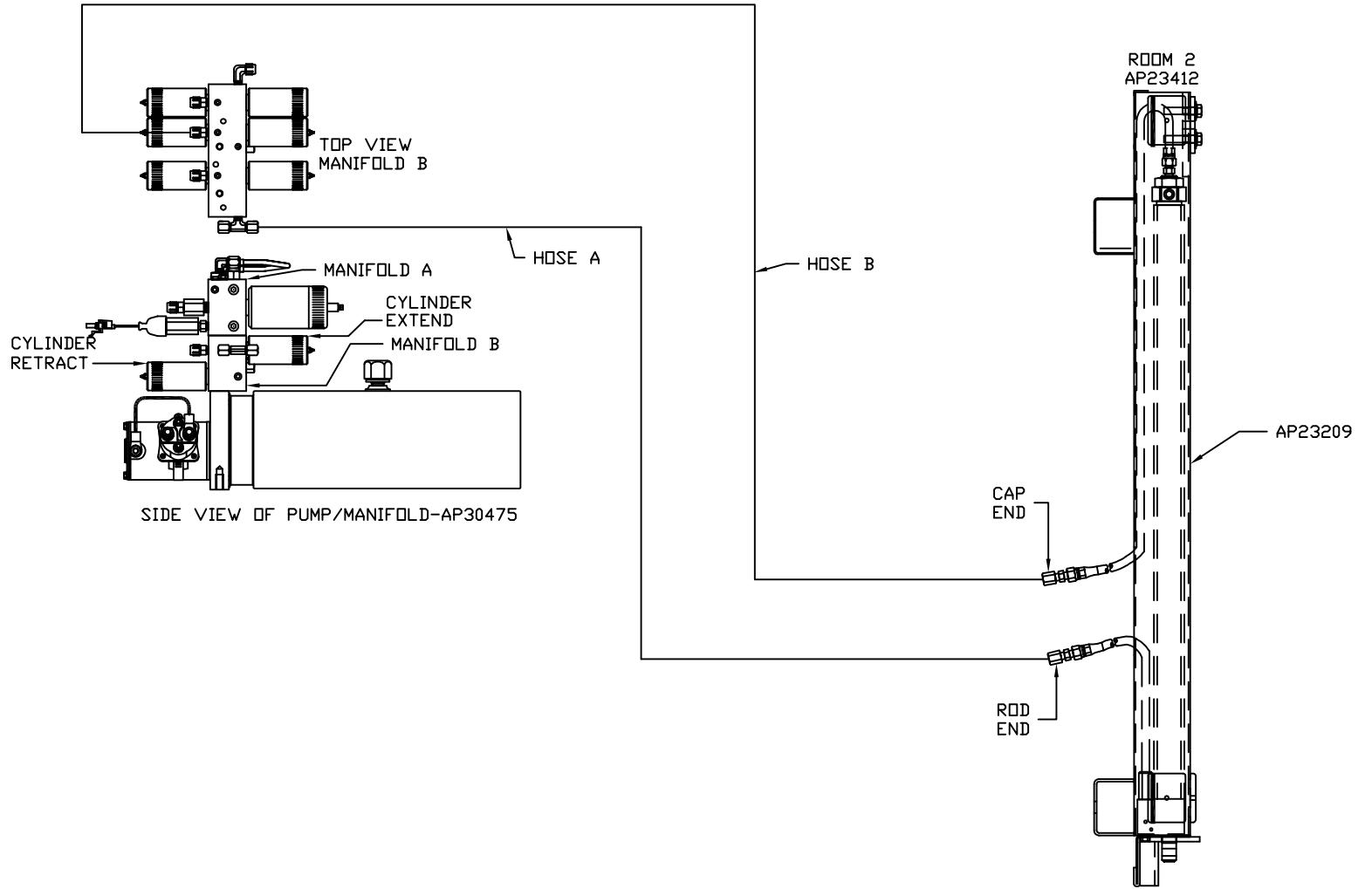
NOTE: HOSES D MUST BE EQUAL LENGTH AND DIAMETER



MODEL	HOSE A	HOSE B	HOSES C	HOSES D	LH ROOM EXT	RH ROOM EXT
S40KD	AP5924	AP11212	AP24649	AP4906	AP29549	AP29548
S40AD	AP5924	AP11212	AP24649	AP4906	AP29548	AP29548

ORIENTATION

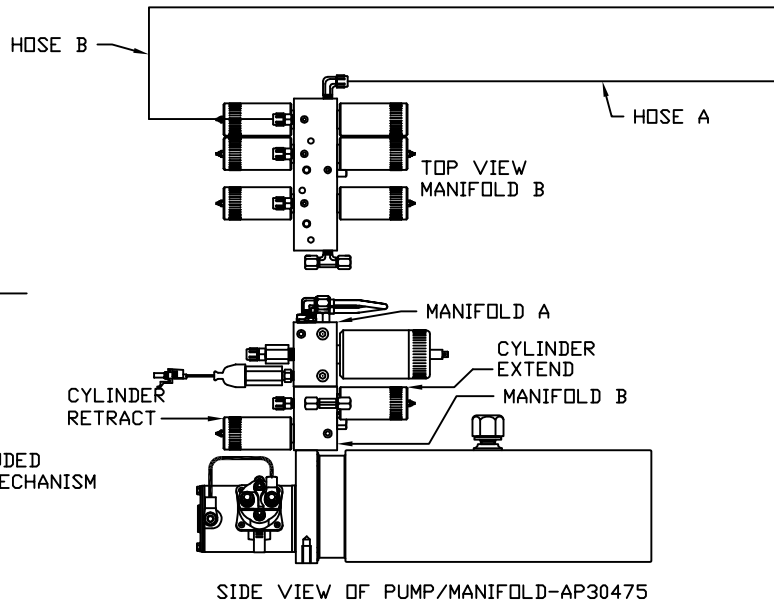
← FRONT



MODEL	HOSE A	HOSE B
S40KD	AP6217	AP5925
S40AD	AP6217	AP5925

ORIENTATION

← FRONT



NOTES

1. HOSES C MUST BE HIGH PRESSURE HOSES OF EQUAL LENGTH AND DIAMETER
2. HOSES D MUST BE EQUAL LENGTH AND DIAMETER
3. HOSES E AND F ARE INCLUDED WITH THE ROOM EXTENSION MECHANISM
4. HOSES E MUST BE HIGH PRESSURE HOSES OF EQUAL LENGTH AND DIAMETER
5. HOSES F MUST BE EQUAL LENGTH AND DIAMETER

MODEL	HOSE A	HOSE B	HOSES C	HOSES D	HOSES E	HOSES F
S40KD	AP5965	AP7358	AP29207	AP29206	AP29209	AP29208
S40AD	AP5965	AP7358	AP29207	AP29206	AP29209	AP29208

MODEL	X-SLIDE KIT	SYNC CYL	LH ROOM EXT	RH ROOM EXT
S40KD	AP27613	AP27302	AP27647	AP27648
S40AD	AP29744	AP14881	AP29205	AP29204

