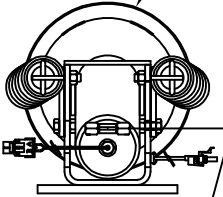
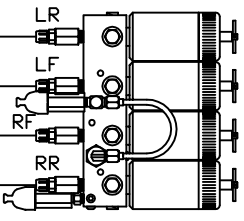


ORIENTATION
← FRONT

TOP VIEW
AP33345
RIGHT FRONT



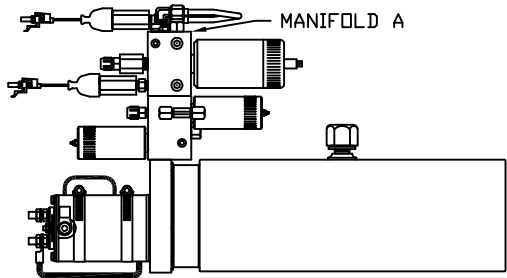
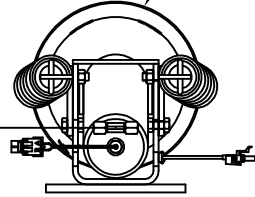
RIGHT FRONT HOSE



TOP VIEW
MANIFOLD A

RIGHT REAR HOSE

TOP VIEW
AP33345
RIGHT REAR

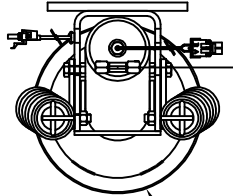


SIDE VIEW OF PUMP/MANIFOLD-AP30124

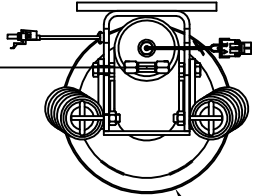
LEFT REAR HOSE

NOTE: CROSS TIES REQUIRED FOR FRONT AND REAR JACKS

LEFT FRONT HOSE



TOP VIEW
AP33345
LEFT FRONT



TOP VIEW
AP33345
LEFT REAR

MODEL	HOSE KIT	LF HOSE	RF HOSE	RR HOSE	LR HOSE
S40KD	AP24448	AP2443	AP5352	AP6117	AP5352
S40AD	AP24448	AP2443	AP5352	AP6117	AP5352

LEVELING SYSTEM: AP32700

NO.	DATE	REVISION

HWH I-80 EXIT 267 SOUTH
RT 1 MOSCOW, IOWA 52760

SCALE 1:6 DATE 12MAY05 DRAWN BY .

HYD CONN DIAGRAM

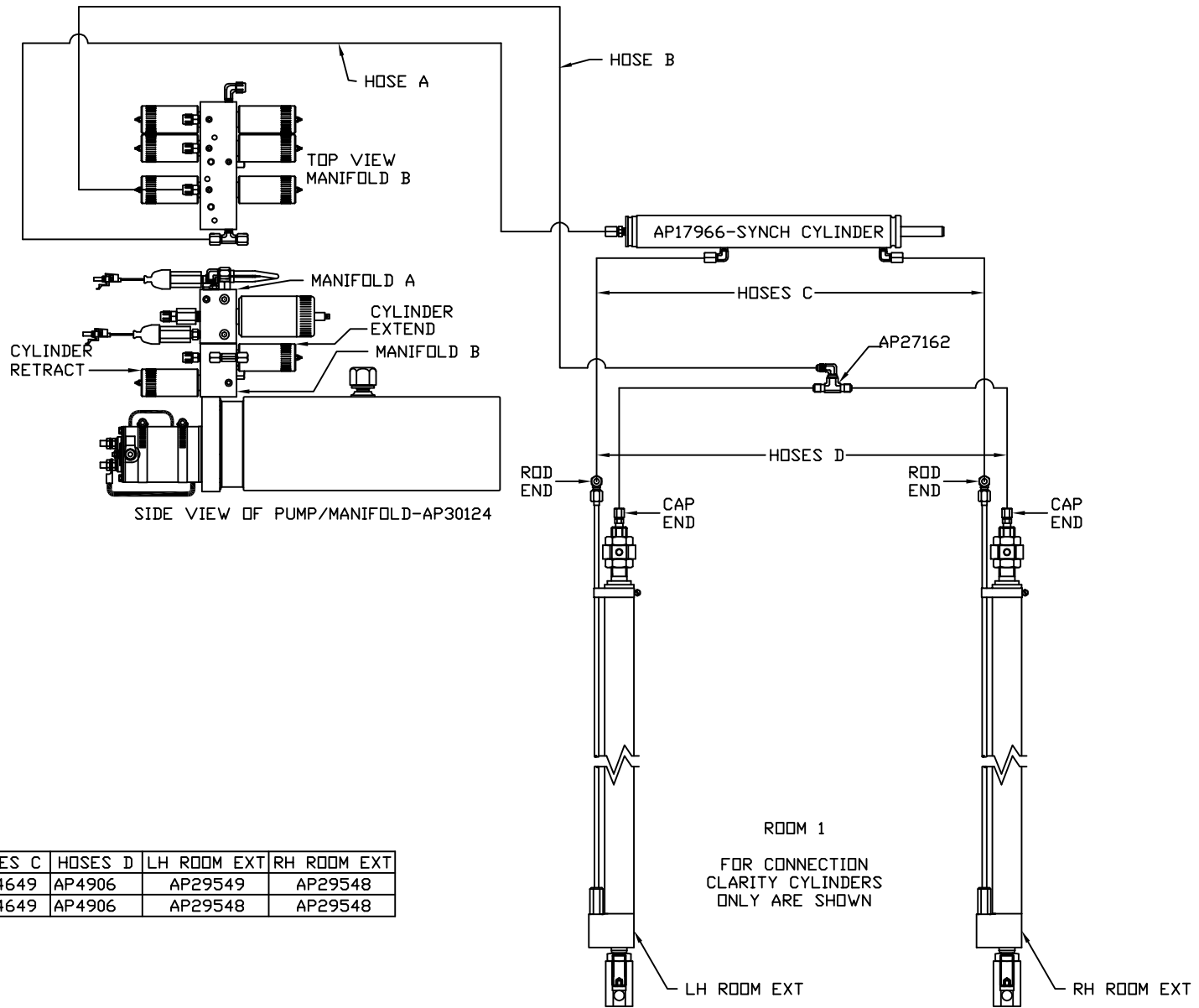
THE INFORMATION DISCLOSED ON THIS DRAWING IS CONFIDENTIAL AND MUST NOT BE DISCLOSED OR USED IN ANY MANNER WHICH WILL BE DETRIMENTAL TO THE HWH CORPORATION

WINNEBAGO DRAWING NUMBER MP69404 A/D

ORIENTATION
 ← FRONT

NOTE: HOSES C MUST BE HIGH PRESSURE HOSES OF EQUAL LENGTH AND DIAMETER

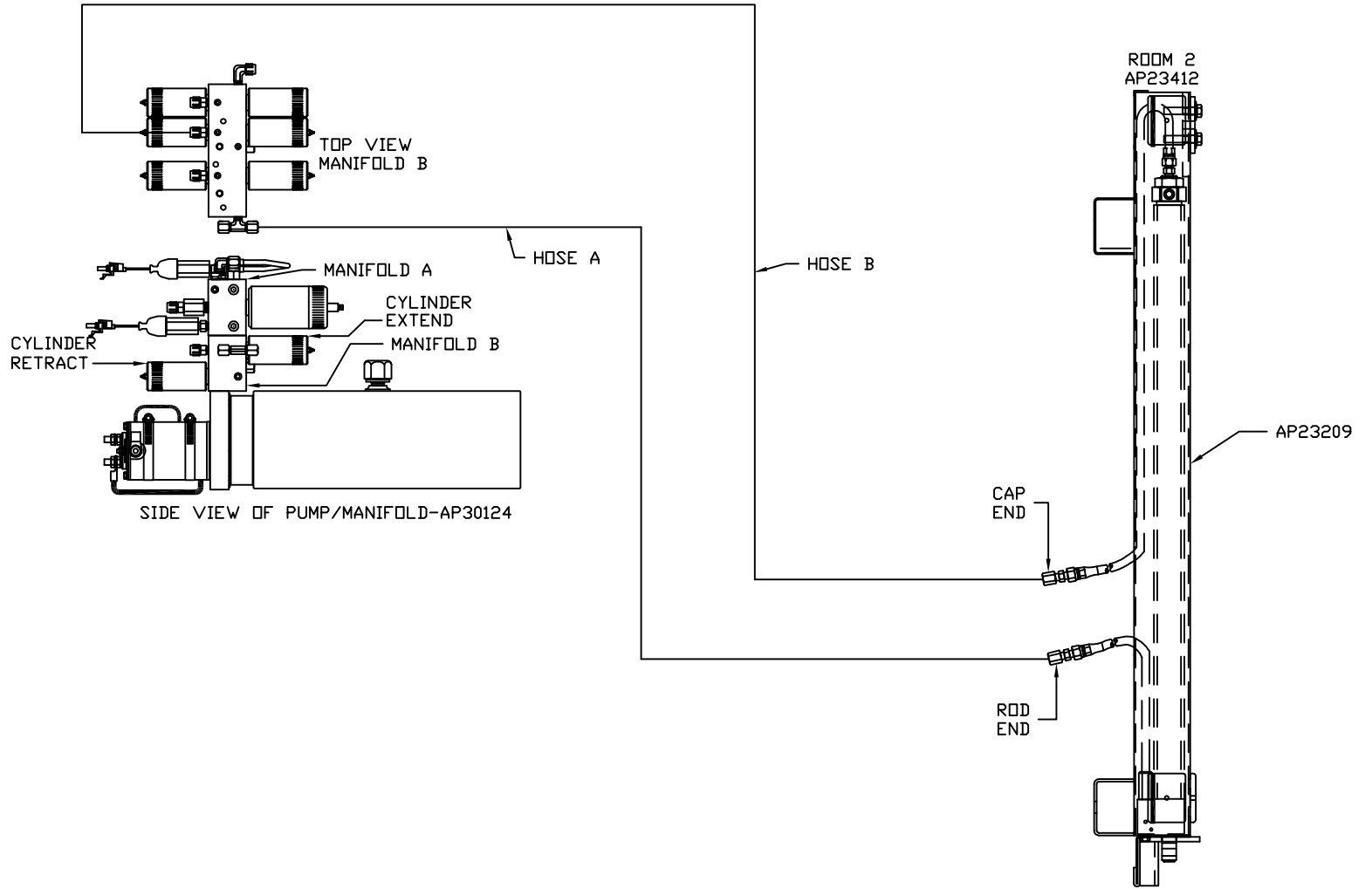
NOTE: HOSES D MUST BE EQUAL LENGTH AND DIAMETER



MODEL	HOSE A	HOSE B	HOSES C	HOSES D	LH ROOM EXT	RH ROOM EXT
S40KD	AP5924	AP11212	AP24649	AP4906	AP29549	AP29548
S40AD	AP5924	AP11212	AP24649	AP4906	AP29548	AP29548

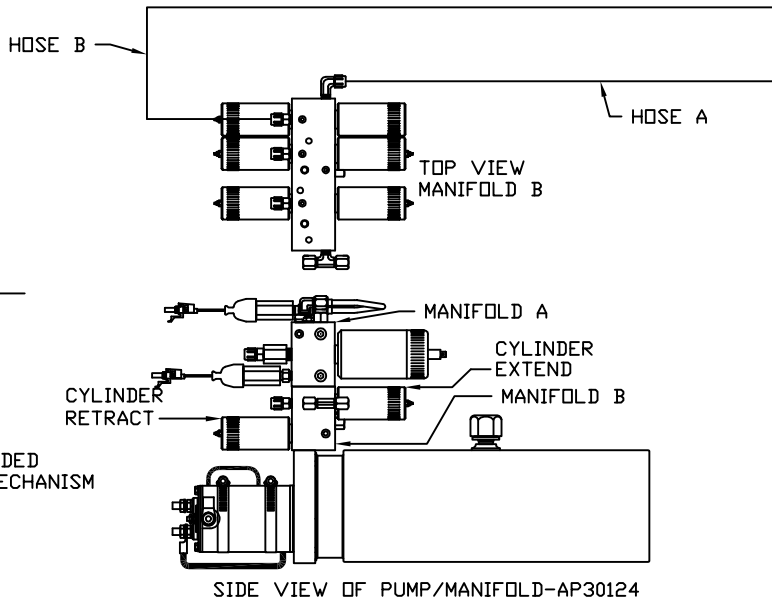
ORIENTATION

← FRONT



MODEL	HOSE A	HOSE B
S40KD	AP6217	AP5925
S40AD	AP6217	AP5925

ORIENTATION
← FRONT



NOTES

1. HOSES C MUST BE HIGH PRESSURE HOSES OF EQUAL LENGTH AND DIAMETER
2. HOSES D MUST BE EQUAL LENGTH AND DIAMETER
3. HOSES E AND F ARE INCLUDED WITH THE ROOM EXTENSION MECHANISM
4. HOSES E MUST BE HIGH PRESSURE HOSES OF EQUAL LENGTH AND DIAMETER
5. HOSES F MUST BE EQUAL LENGTH AND DIAMETER

MODEL	HOSE A	HOSE B	HOSES C	HOSES D	HOSES E	HOSES F
S40KD	AP5965	AP7358	AP29207	AP29206	AP29209	AP29208
S40AD	AP5965	AP7358	AP29207	AP29206	AP29209	AP29208

MODEL	X-SLIDE KIT	SYNC CYL	LH ROOM EXT	RH ROOM EXT
S40KD	AP27613	AP27302	AP27647	AP27648
S40AD	AP29744	AP14881	AP29205	AP29204

