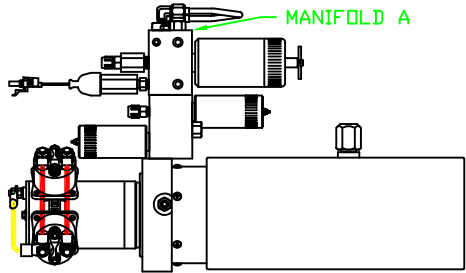
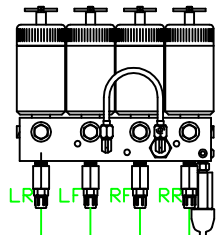


ORIENTATION  
← FRONT



SIDE VIEW OF PUMP/MANIFOLD-AP19561  
SOME POWER UNITS HAVE LARGE VALVES

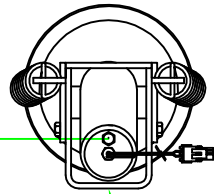
TOP VIEW - MANIFOLD A



LR LF RF RR

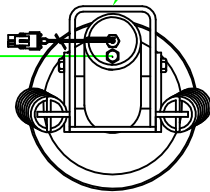
RIGHT FRONT HOSE

LEFT FRONT HOSE

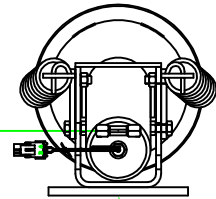


TOP VIEW AP18813  
RIGHT FRONT

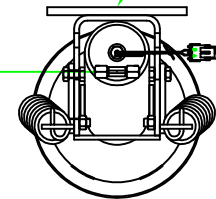
NOTE: CROSS TIES REQUIRED FOR FRONT AND REAR JACKS



TOP VIEW AP18813  
LEFT FRONT



TOP VIEW AP19670  
RIGHT REAR



TOP VIEW AP19670  
LEFT REAR

RIGHT REAR HOSE

LEFT REAR HOSE

MODEL	HOSE KIT	LF HOSE	RF HOSE	RR HOSE	LR HOSE
L36L	AP19679	AP5352	AP2443	AP27563	AP4312

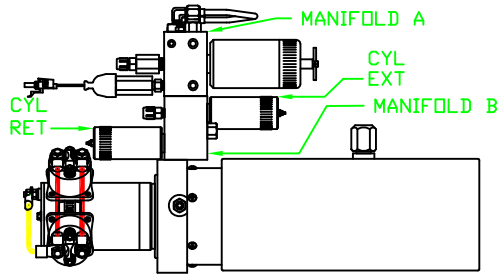
LEVELING SYSTEM: AP20245

		HWH		I-80 EXIT 267 SOUTH RT 1 MOSCOW, IOWA 52760	
		SCALE 1:6	DATE 15AUG05	DRAWN BY .	
		HYD CONN DIAGRAM			
		WINNEBAGO		DRAWING NUMBER MP69414 A/B	
NO.	DATE	REVISION			
THE INFORMATION DISCLOSED ON THIS DRAWING IS CONFIDENTIAL AND MUST NOT BE DISCLOSED OR USED IN ANY MANNER WHICH WILL BE DETRIMENTAL TO THE HWH CORPORATION					

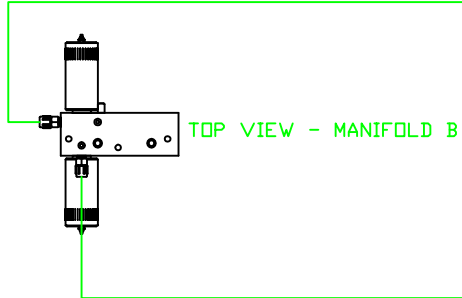
ORIENTATION

← FRONT

MODEL	HOSE A	HOSE B	HOSES C	HOSES D
L36L	AP5965	AP7358	AP24642	AP5384



SIDE VIEW OF PUMP/MANIFOLD-AP19561  
SOME POWER UNITS HAVE LARGE VALVES



NOTE: HOSES C MUST BE HIGH PRESSURE HOSES OF EQUAL LENGTH AND DIAMETER

NOTE: HOSES D MUST BE EQUAL LENGTH AND DIAMETER

