

MODEL	HOSE KIT	LF HOSE	RF HOSE	RR HOSE	LR HOSE
Q40E	AP24448	AP2443	AP5352	AP6117	AP5352
Q40ED	AP24448	AP2443	AP5352	AP6117	AP5352

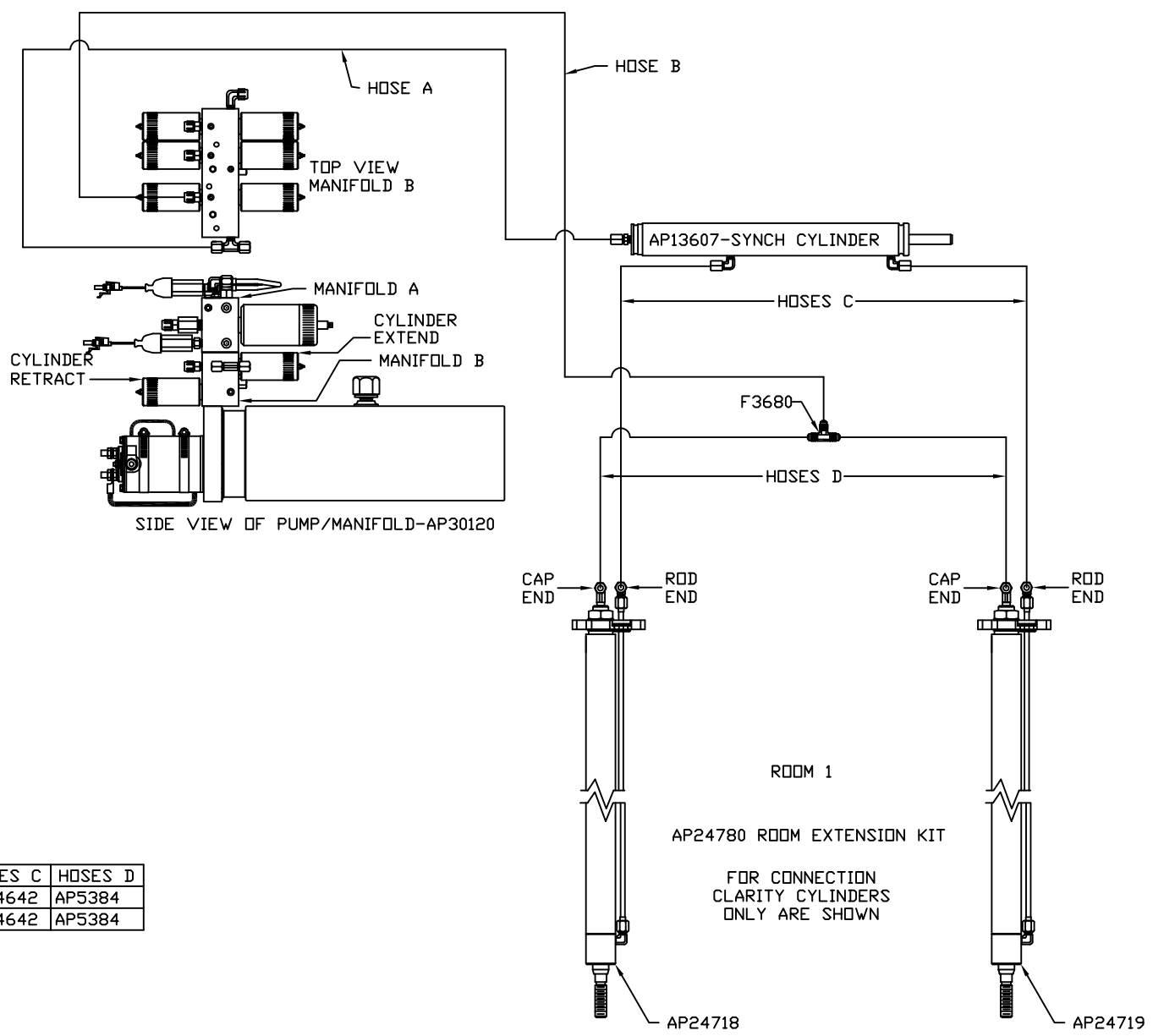
LEVELING SYSTEM: AP28986

		HWH		I-80 EXIT 267 SOUTH RT 1 MOSCOW, IOWA 52760	
		SCALE 1:6	DATE 16MAY05	DRAWN BY .	
		HYD CONN DIAGRAM			
NO.	DATE	REVISION			
THE INFORMATION DISCLOSED ON THIS DRAWING IS CONFIDENTIAL AND MUST NOT BE DISCLOSED OR USED IN ANY MANNER WHICH WILL BE DETRIMENTAL TO THE HWH CORPORATION					
WINNEBAGO				DRAWING NUMBER MP69422 A/D	

ORIENTATION
 ← FRONT

NOTE: HOSES C MUST BE HIGH PRESSURE HOSES OF EQUAL LENGTH AND DIAMETER

NOTE: HOSES D MUST BE EQUAL LENGTH AND DIAMETER

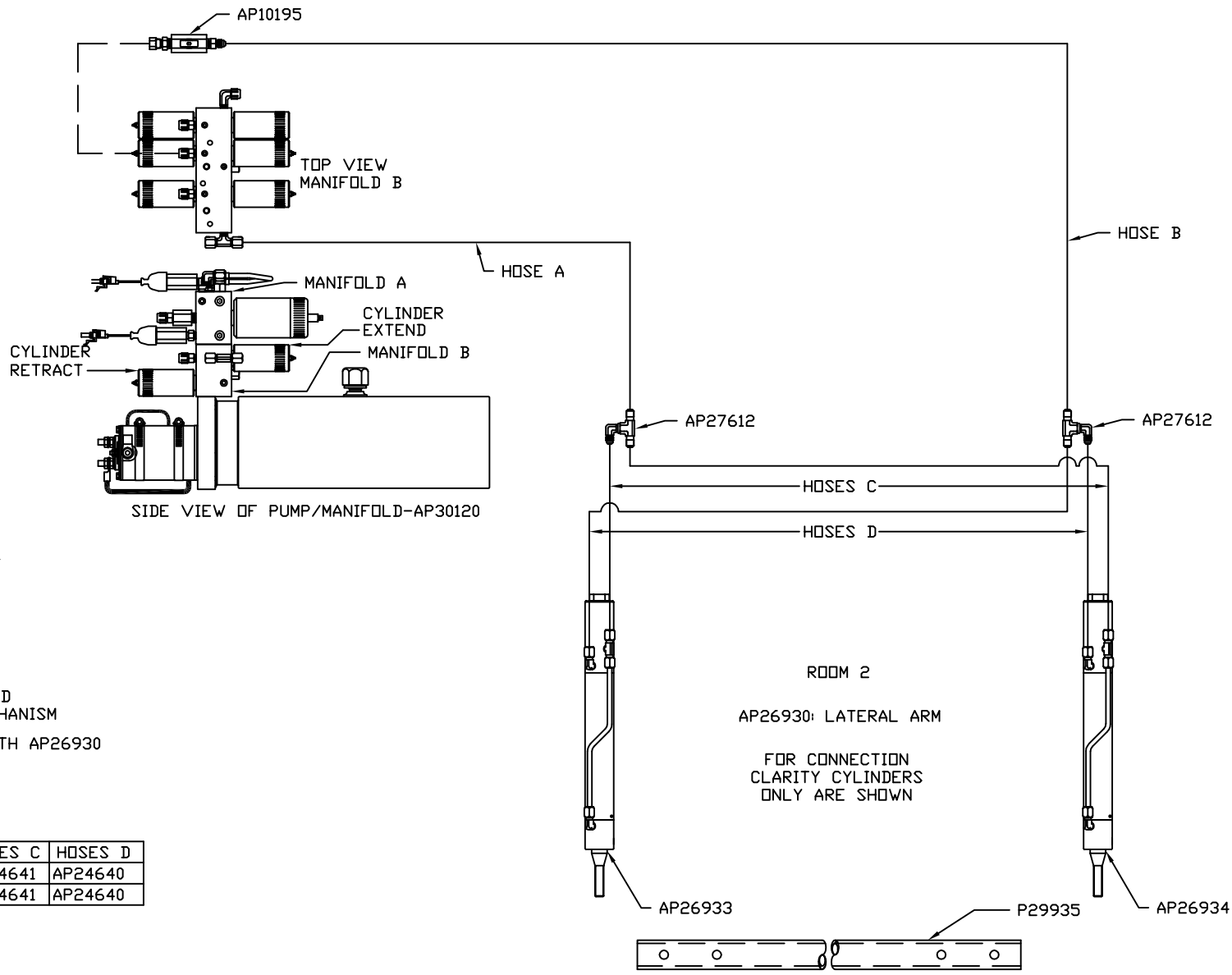


MODEL	HOSE A	HOSE B	HOSES C	HOSES D
Q40E	AP5924	AP11212	AP24642	AP5384
Q40ED	AP5924	AP11212	AP24642	AP5384

AP24780 ROOM EXTENSION KIT

FOR CONNECTION CLARITY CYLINDERS ONLY ARE SHOWN

ORIENTATION
← FRONT

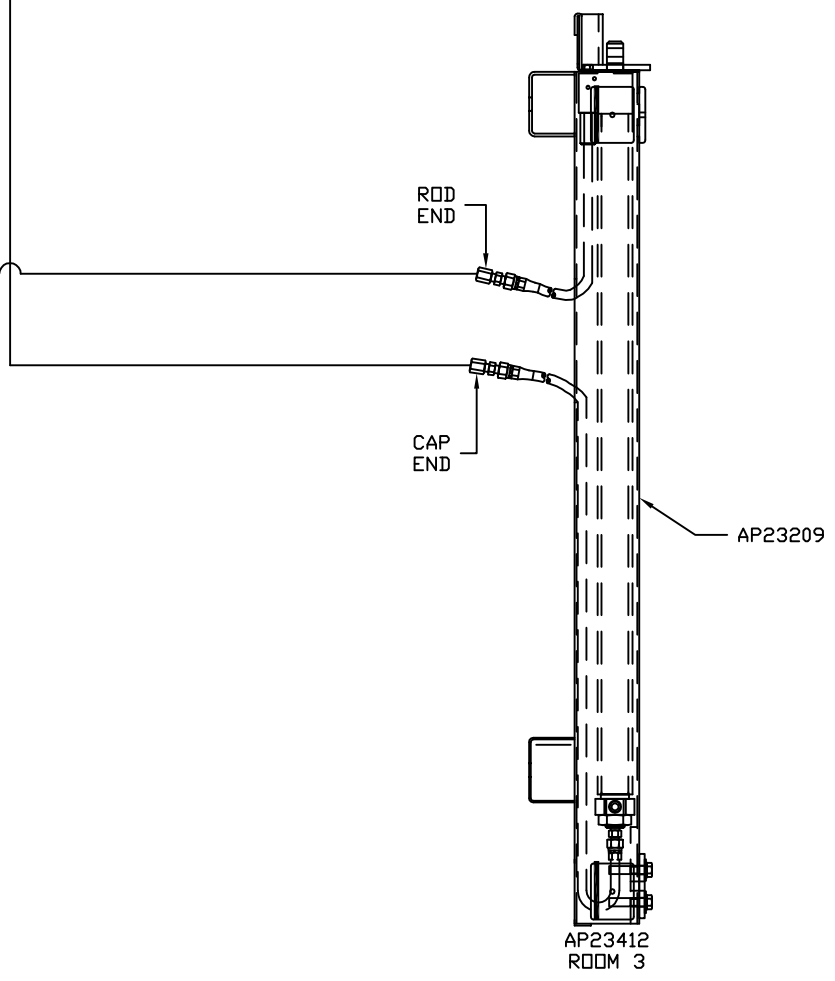
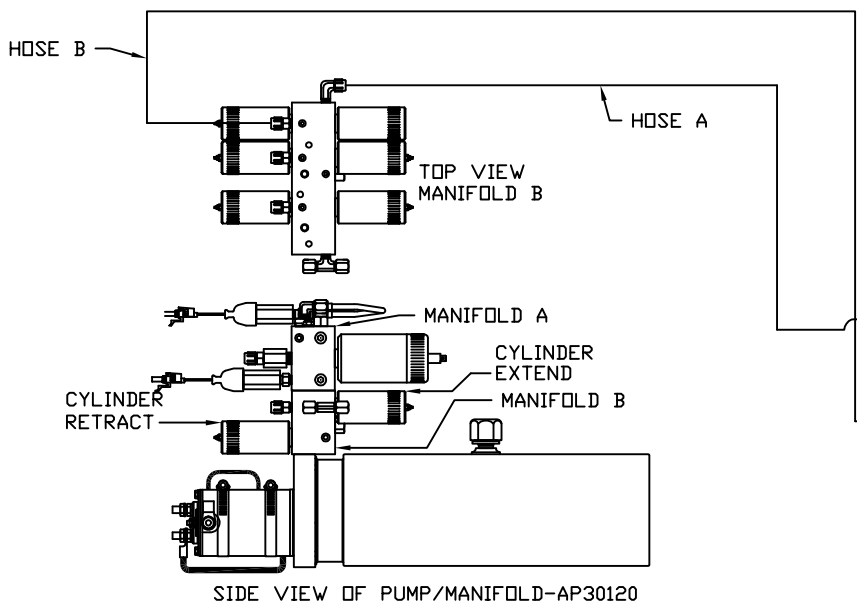


NOTES

1. HOSES C MUST BE HIGH PRESSURE HOSES OF EQUAL LENGTH AND DIAMETER
2. HOSES D MUST BE EQUAL LENGTH AND DIAMETER
3. HOSES C AND D ARE INCLUDED WITH THE ROOM EXTENSION MECHANISM
4. P29935 IS NOT INCLUDED WITH AP26930 AND IS SHIPPED SEPARATELY

MODEL	HOSE A	HOSE B	HOSES C	HOSES D
Q40E	AP6217	AP5925	AP24641	AP24640
Q40ED	AP6217	AP5925	AP24641	AP24640

ORIENTATION
 ← FRONT



MODEL	HOSE A	HOSE B
Q40E	AP7181	AP7178
Q40ED	AP7181	AP7178