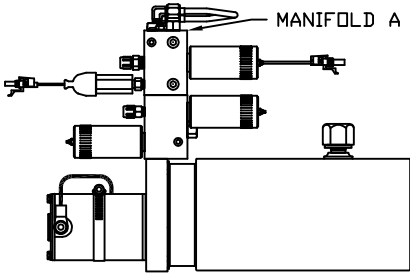
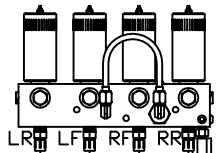


ORIENTATION
← FRONT



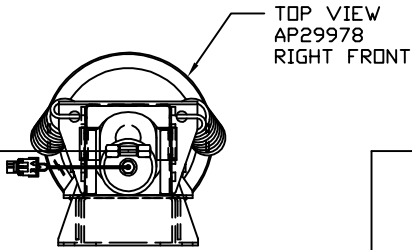
SIDE VIEW OF PUMP/MANIFOLD-AP32359

TOP VIEW - MANIFOLD A



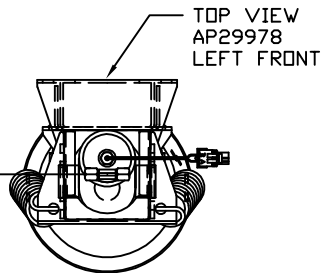
RIGHT FRONT HOSE

LEFT FRONT HOSE

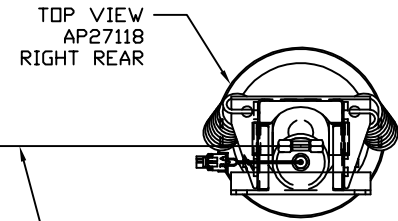


TOP VIEW
AP29978
RIGHT FRONT

NOTE: CROSS TIES REQUIRED FOR FRONT AND REAR JACKS



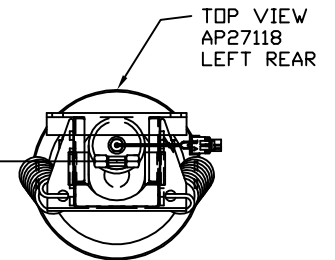
TOP VIEW
AP29978
LEFT FRONT



TOP VIEW
AP27118
RIGHT REAR

RIGHT REAR HOSE

LEFT REAR HOSE



TOP VIEW
AP27118
LEFT REAR

MODEL	HOSE KIT	LF HOSE	RF HOSE	RR HOSE	LR HOSE
F30W	AP19681	AP5352	AP2443	AP4164	AP4163
F32V	AP19681	AP5352	AP2443	AP4164	AP4163
F34D	AP19681	AP5352	AP2443	AP4164	AP4163
F36M	AP19681	AP5352	AP2443	AP4164	AP4163
G31Y	AP19681	AP5352	AP2443	AP4164	AP4163
G33V	AP19681	AP5352	AP2443	AP4164	AP4163
G35U	AP19681	AP5352	AP2443	AP4164	AP4163
G37C	AP19679	AP5352	AP2443	AP27563	AP4312
G38G	AP19679	AP5352	AP2443	AP27563	AP4312
G38R	AP19679	AP5352	AP2443	AP27563	AP4312

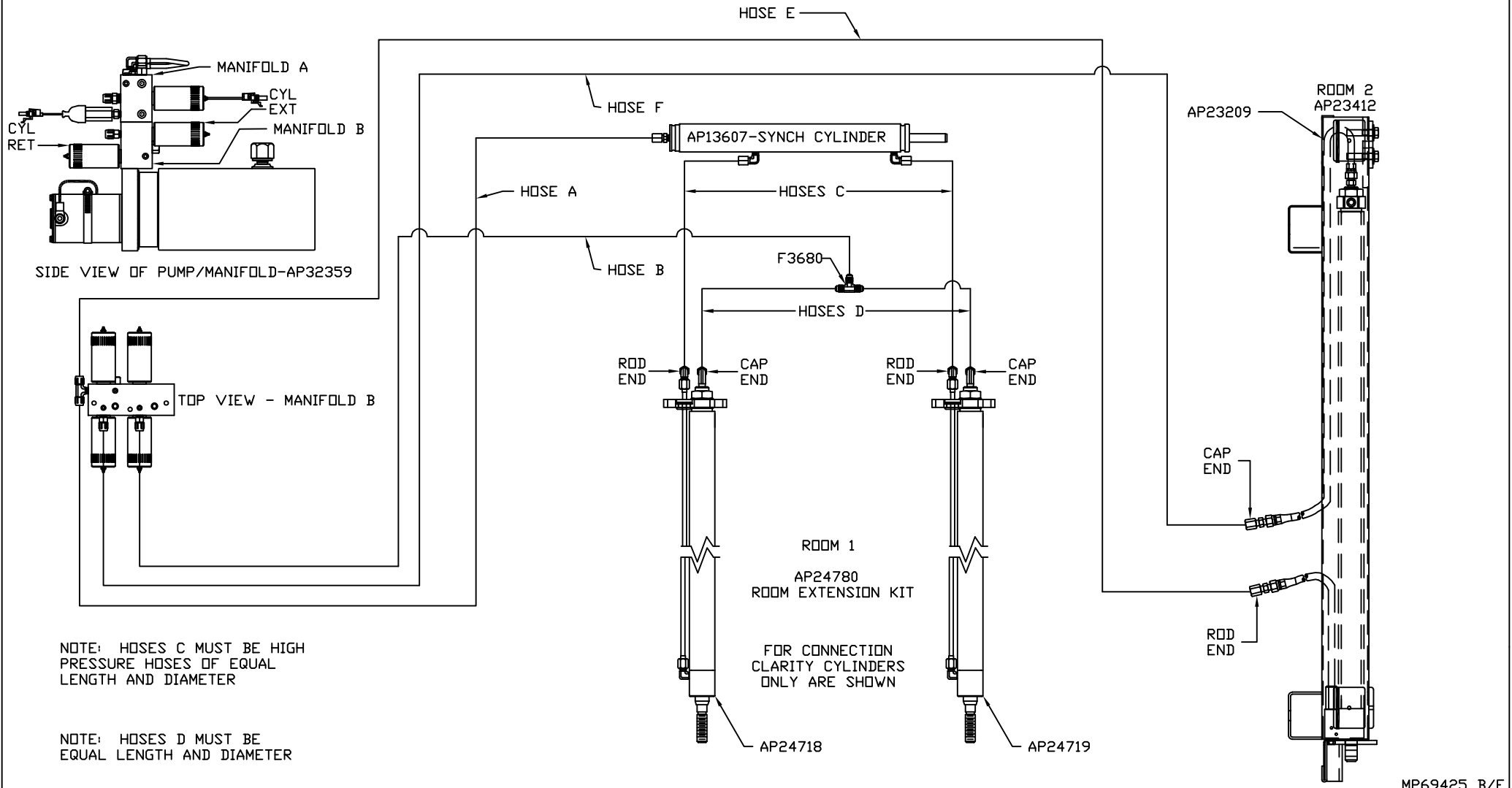
LEVELING SYSTEM: AP31431

		HWH		I-80 EXIT 267 SOUTH RT 1 MOSCOW, IOWA 52760	
		SCALE 1:6	DATE 17MAY05	DRAWN BY .	
		HYD CONN DIAGRAM			
NO.	DATE	REVISION			
		WINNEBAGO		DRAWING NUMBER MP69425 A/E	
<small>THE INFORMATION DISCLOSED ON THIS DRAWING IS CONFIDENTIAL AND MUST NOT BE DISCLOSED OR USED IN ANY MANNER WHICH WILL BE DETRIMENTAL TO THE HWH CORPORATION</small>					

ORIENTATION
 ← FRONT

MODEL	HOSE A	HOSE B	HOSES C	HOSES D	HOSE E	HOSE F
F30W	AP5965	AP7358	AP24642	AP5384	AP6117	AP4669
F32V	SEE MP69425 C					
F34D	SEE MP69425 C					
F36M	SEE MP69425 C					

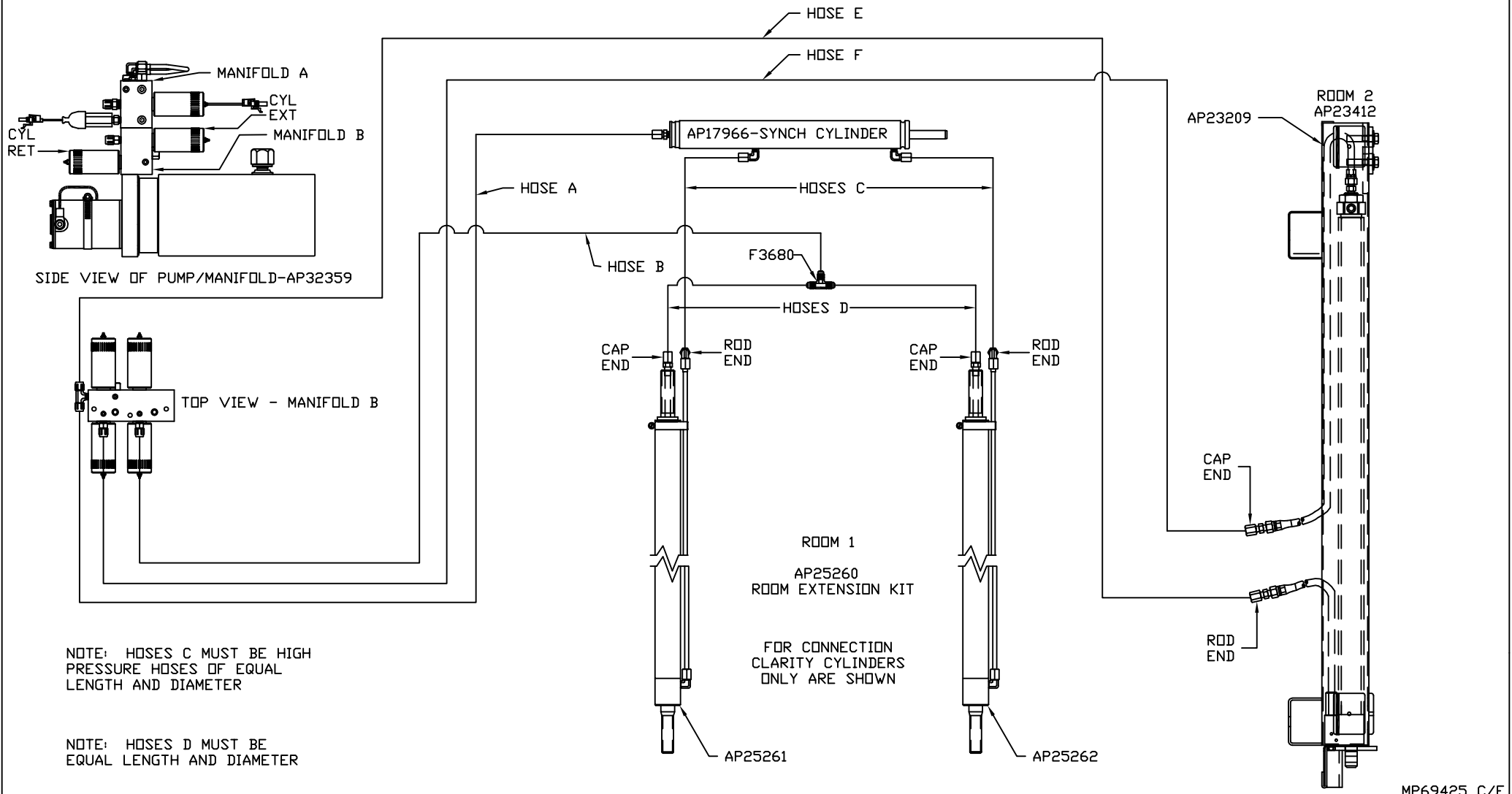
FOR G BODY COACHES
 SEE MP69425 D AND MP69425 E



ORIENTATION
 ← FRONT

MODEL	HOSE A	HOSE B	HOSES C	HOSES D	HOSE E	HOSE F
F30W	SEE MP69425 B					
F32V	AP5965	AP7358	AP24642	AP5384	AP6117	AP4669
F34D	AP5965	AP7358	AP24642	AP5384	AP6117	AP4669
F36M	AP5965	AP7358	AP24642	AP5384	AP6117	AP4669

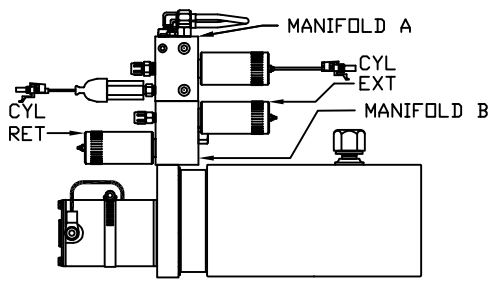
FOR G BODY COACHES
 SEE MP69425 D AND MP69425 E



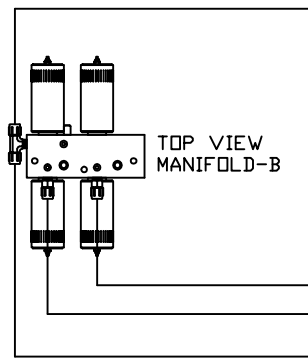
ORIENTATION
← FRONT

MODEL	HOSE A	HOSE B	HOSES C	HOSES D	HOSE E	HOSE F
G31Y	AP5965	AP7358	AP24649	AP4906	AP6117	AP4669
G33V	AP5965	AP7358	AP24649	AP4906	AP6117	AP4669
G35U	AP5965	AP7358	AP24649	AP4906	AP6117	AP4669
G37C	SEE MP69425 E					
G38G	AP5965	AP7358	AP24649	AP4906	AP6117	AP4669
G38R	AP5965	AP7358	AP24649	AP4906	AP6117	AP4669

FOR F BODY COACHES
SEE MP69425 B AND MP69425 C



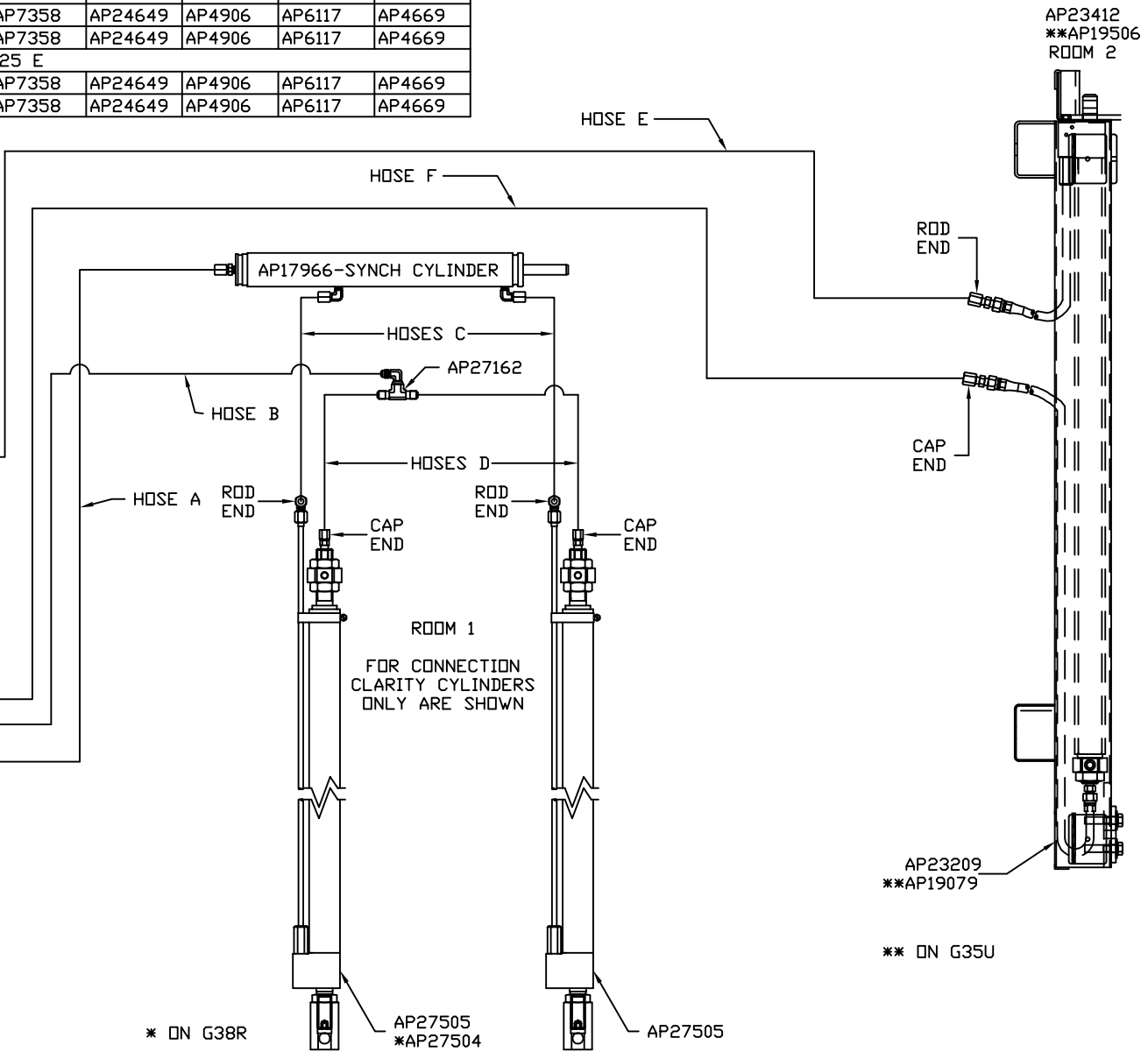
SIDE VIEW OF PUMP/MANIFOLD-AP32359



TOP VIEW
MANIFOLD-B

NOTE: HOSES C MUST BE HIGH PRESSURE HOSES OF EQUAL LENGTH AND DIAMETER

NOTE: HOSES D MUST BE EQUAL LENGTH AND DIAMETER



ROOM 1
FOR CONNECTION CLARITY CYLINDERS ONLY ARE SHOWN

AP23412
**AP19506
ROOM 2

AP23209
**AP19079

** ON G35U

* ON G38R

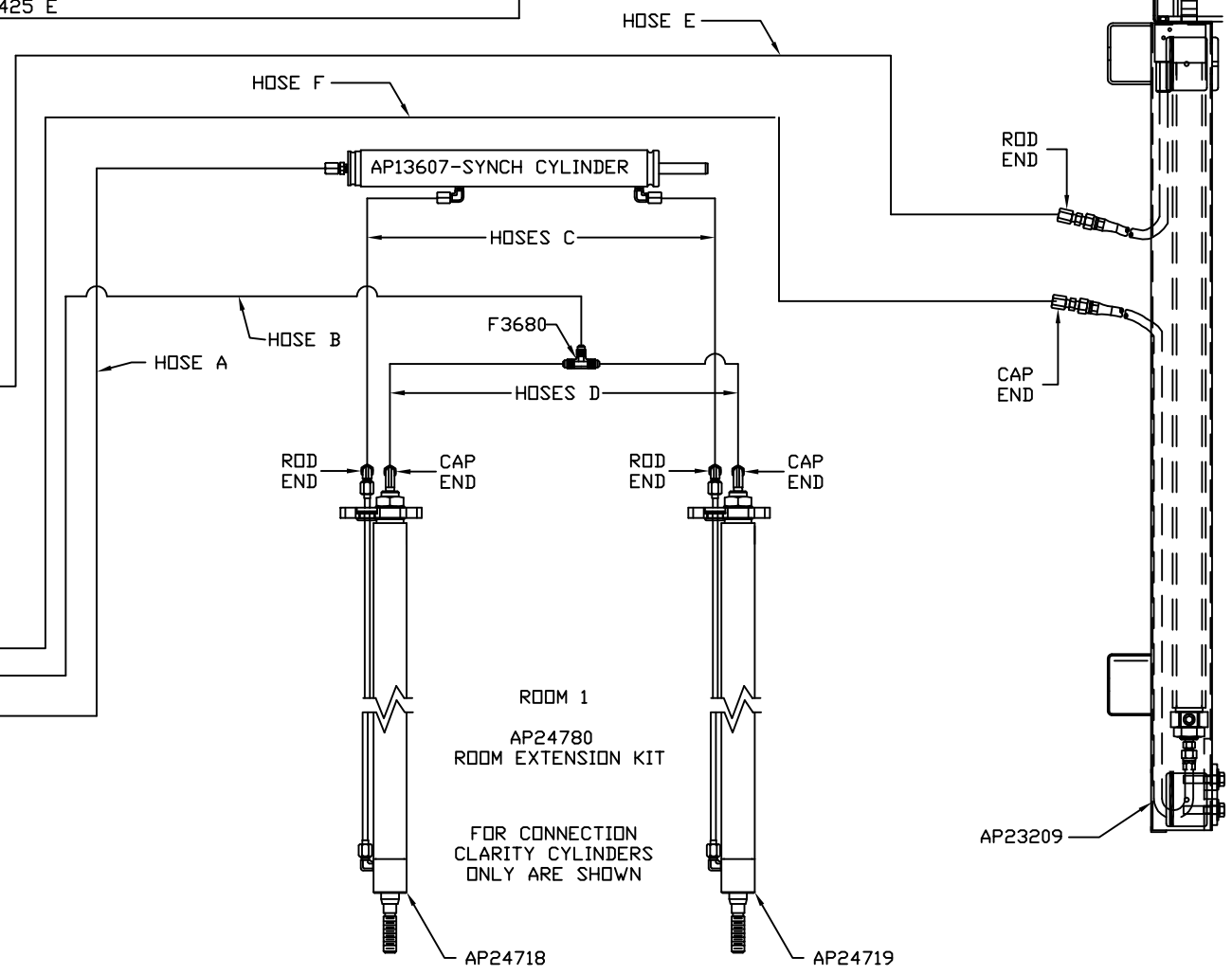
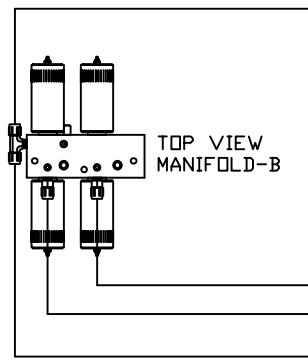
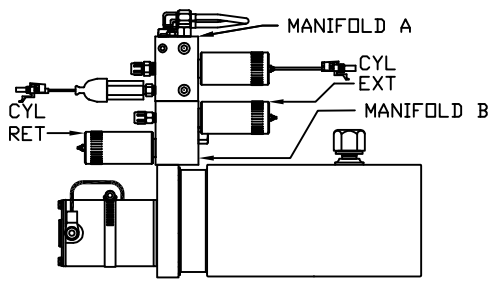
AP27505
*AP27504

AP27505

ORIENTATION
 ← FRONT

MODEL	HOSE A	HOSE B	HOSES C	HOSES D	HOSE E	HOSE F
G31Y	SEE MP69425 E					
G33V	SEE MP69425 E					
G35U	SEE MP69425 E					
G37C	AP5965	AP7358	AP24642	AP5384	AP6117	AP4669
G38G	SEE MP69425 E					
G38R	SEE MP69425 E					

FOR F BODY COACHES
 SEE MP69425 B AND MP69425 C



NOTE: HOSES C MUST BE HIGH PRESSURE HOSES OF EQUAL LENGTH AND DIAMETER

NOTE: HOSES D MUST BE EQUAL LENGTH AND DIAMETER