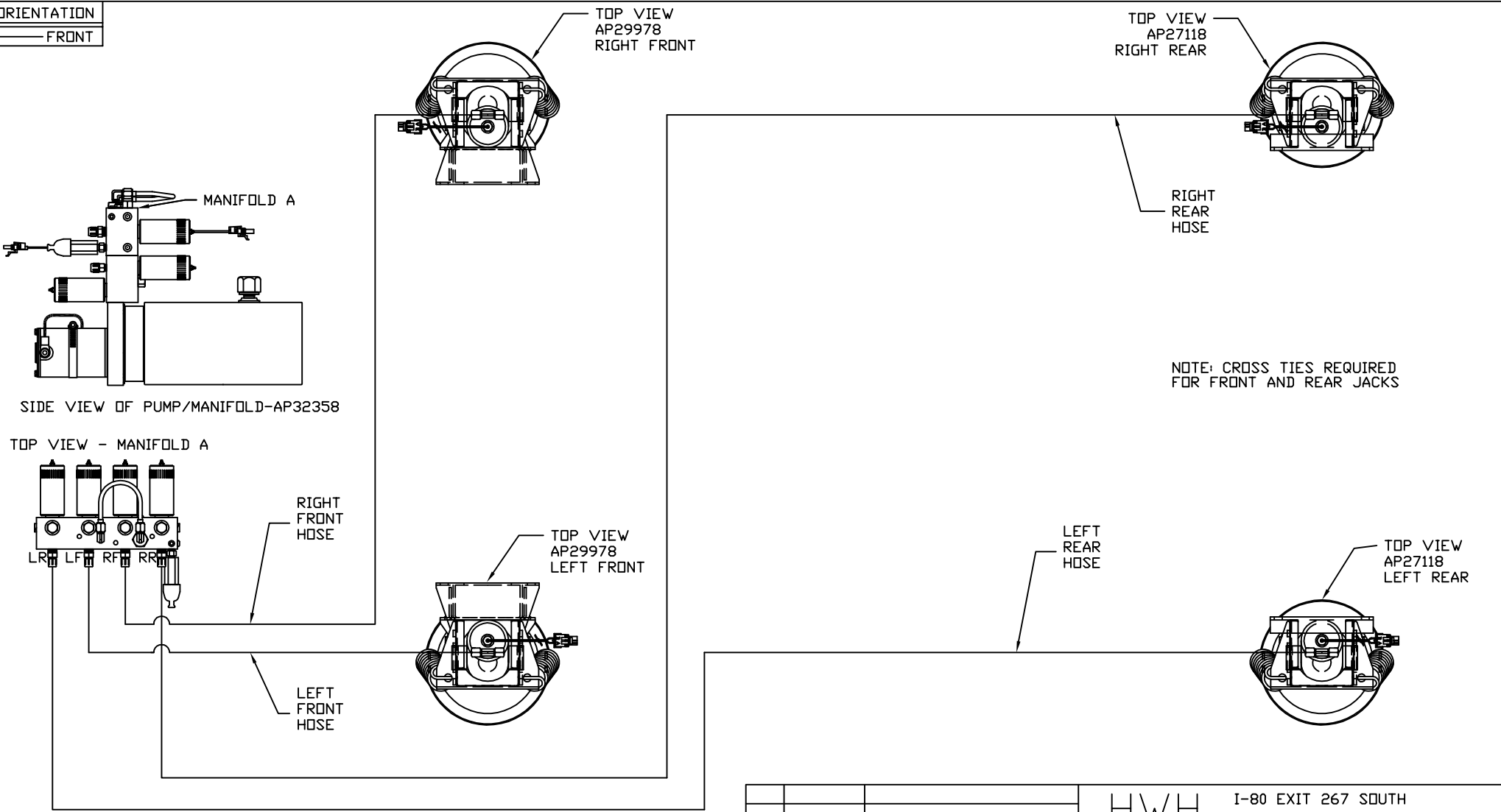


ORIENTATION  
← FRONT



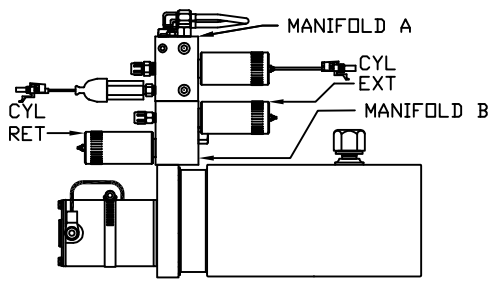
MODEL	HOSE KIT	LF HOSE	RF HOSE	RR HOSE	LR HOSE
G35S	AP19681	AP5352	AP2443	AP4164	AP4163
G38S	AP19679	AP5352	AP2443	AP27563	AP4312

LEVELING SYSTEM: AP31333

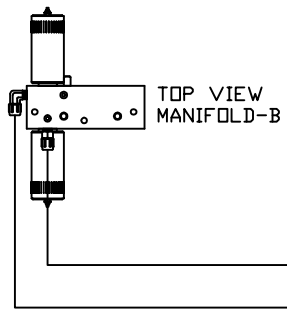
		<b>HWH</b>		I-80 EXIT 267 SOUTH RT 1 MOSCOW, IOWA 52760	
		SCALE 1:6	DATE 17MAY05	DRAWN BY .	
		HYD CONN DIAGRAM			
NO.	DATE	REVISION			
		WINNEBAGO		DRAWING NUMBER MP69426 A/B	
<small>THE INFORMATION DISCLOSED ON THIS DRAWING IS CONFIDENTIAL AND MUST NOT BE DISCLOSED OR USED IN ANY MANNER WHICH WILL BE DETRIMENTAL TO THE HWH CORPORATION</small>					

ORIENTATION  
 ← FRONT

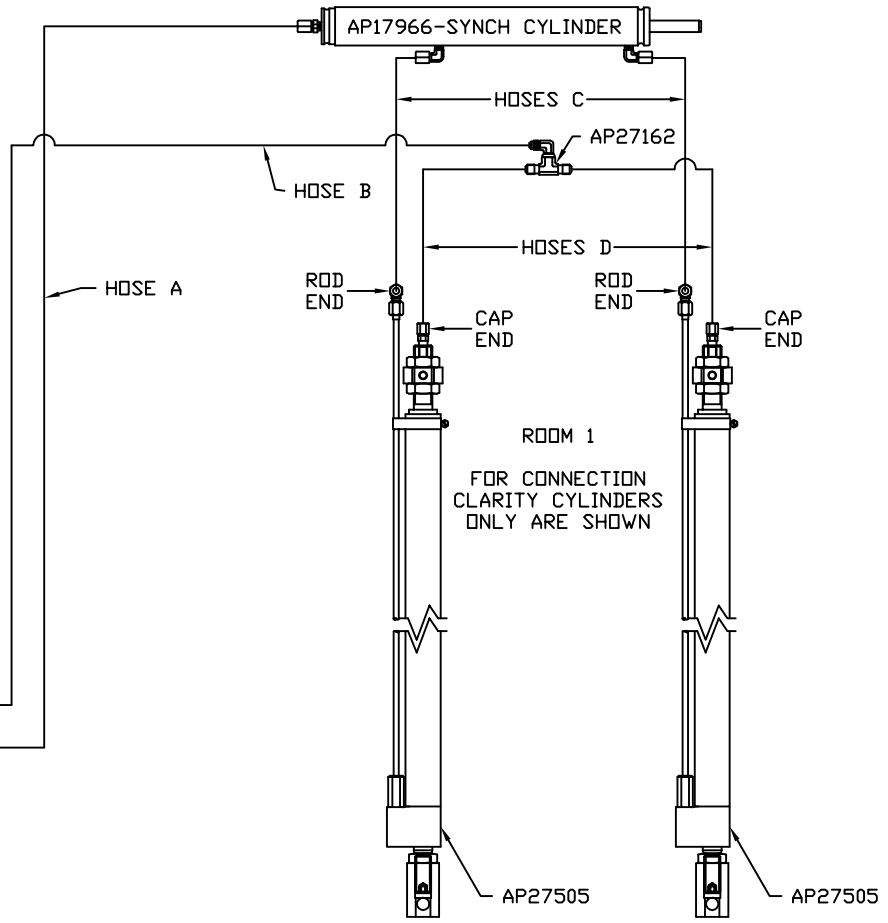
MODEL	HOSE A	HOSE B	HOSES C	HOSES D
G35S	AP5965	AP7358	AP24649	AP4906
G38S	AP5965	AP7358	AP24649	AP4906



SIDE VIEW OF PUMP/MANIFOLD-AP32358



TOP VIEW  
 MANIFOLD-B



NOTE: HOSES C MUST BE HIGH PRESSURE HOSES OF EQUAL LENGTH AND DIAMETER

NOTE: HOSES D MUST BE EQUAL LENGTH AND DIAMETER