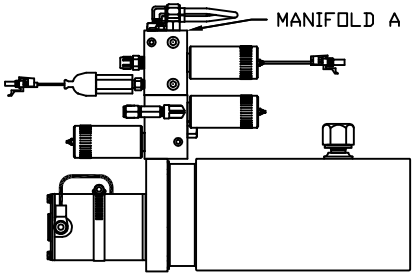
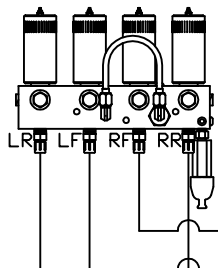


ORIENTATION
← FRONT



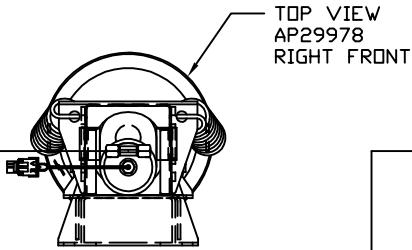
SIDE VIEW OF PUMP/MANIFOLD-AP32360

TOP VIEW - MANIFOLD A



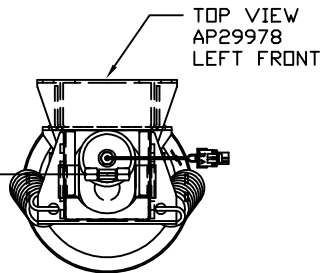
RIGHT FRONT HOSE

LEFT FRONT HOSE

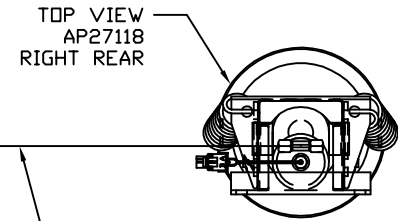


TOP VIEW
AP29978
RIGHT FRONT

NOTE: CROSS TIES REQUIRED FOR FRONT AND REAR JACKS



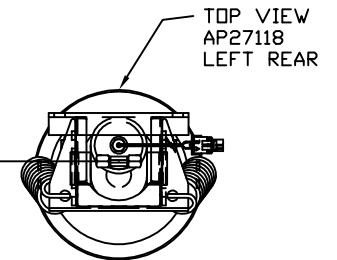
TOP VIEW
AP29978
LEFT FRONT



TOP VIEW
AP27118
RIGHT REAR

RIGHT REAR HOSE

LEFT REAR HOSE



TOP VIEW
AP27118
LEFT REAR

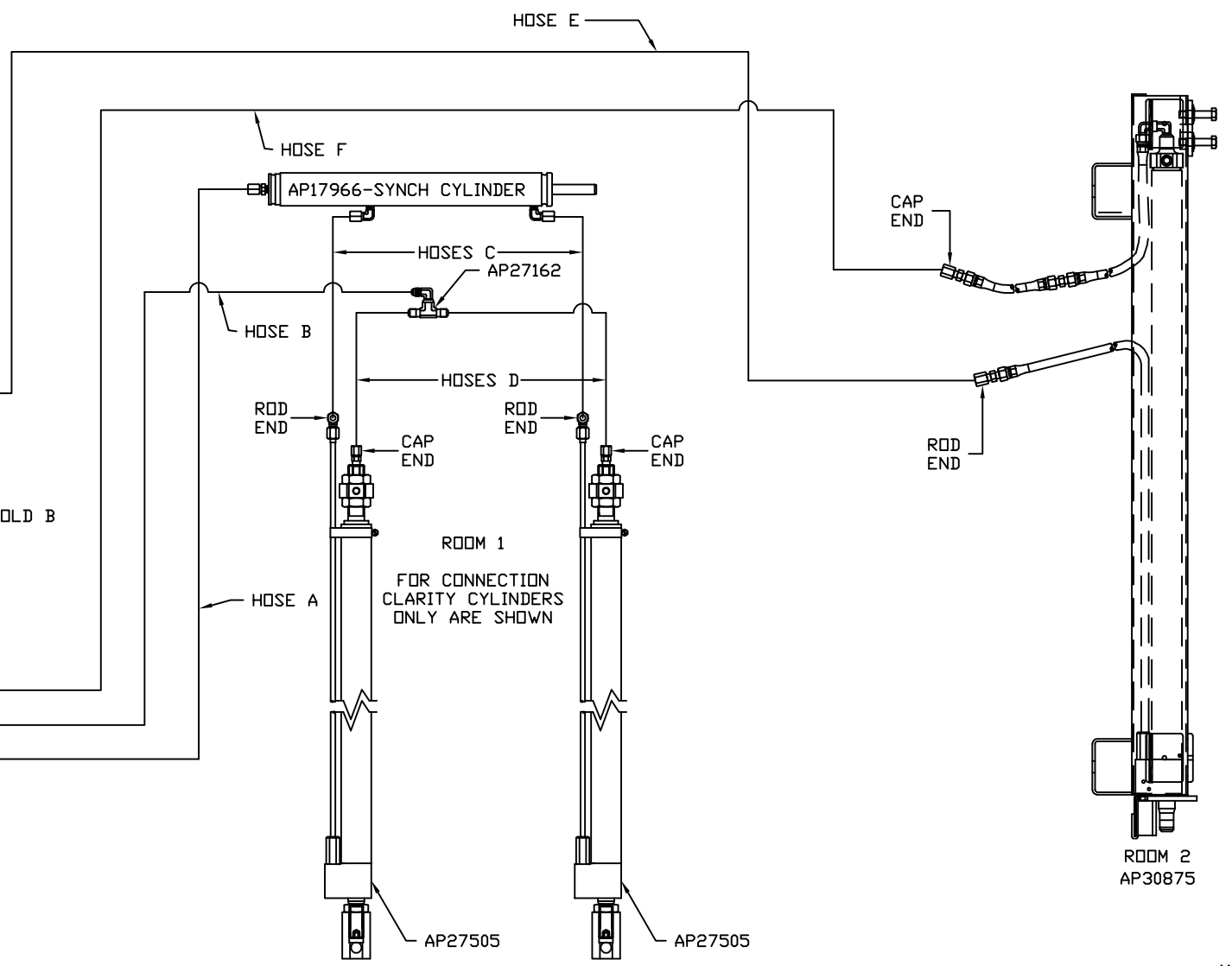
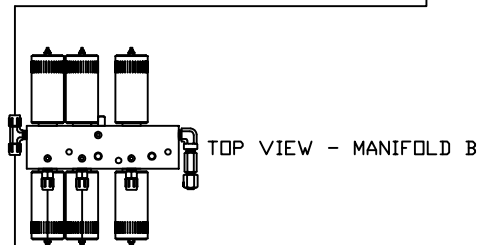
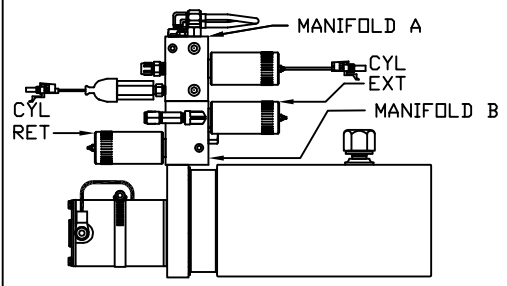
MODEL	HOSE KIT	LF HOSE	RF HOSE	RR HOSE	LR HOSE
G37B	AP19679	AP5352	AP2443	AP27563	AP4312

LEVELING SYSTEM: AP31418

		HWH I-80 EXIT 267 SOUTH RT 1 MOSCOW, IOWA 52760	
SCALE 1:6	DATE 19MAY05	DRAWN BY .	
HYD CONN DIAGRAM			
NO.	DATE	REVISION	
		WINNEBAGO	
THE INFORMATION DISCLOSED ON THIS DRAWING IS CONFIDENTIAL AND MUST NOT BE DISCLOSED OR USED IN ANY MANNER WHICH WILL BE DETRIMENTAL TO THE HWH CORPORATION			DRAWING NUMBER MP69427 A/C

ORIENTATION
 ← FRONT

MODEL	HOSE A	HOSE B	HOSES C	HOSES D	HOSE E	HOSE F
G37B	AP5965	AP7358	AP24649	AP4906	AP6117	AP4669

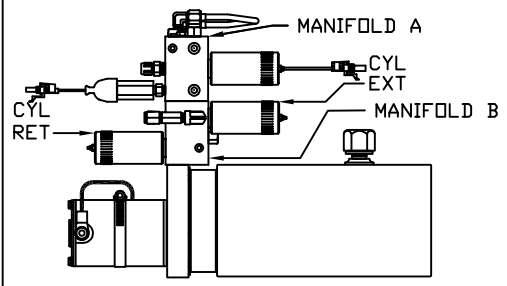


NOTE: HOSES C MUST BE HIGH PRESSURE HOSES OF EQUAL LENGTH AND DIAMETER

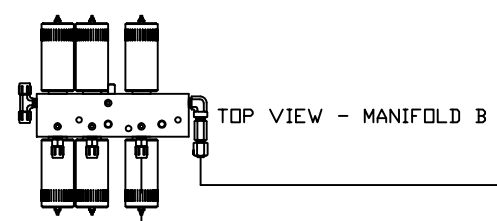
NOTE: HOSES D MUST BE EQUAL LENGTH AND DIAMETER

ORIENTATION
 ← FRONT

MODEL	HOSE A	HOSE B	HOSES C	HOSES D
G37B	AP6217	AP5925	AP24635	AP4159



SIDE VIEW OF PUMP/MANIFOLD-AP32360



NOTE: HOSES C MUST BE HIGH PRESSURE HOSES OF EQUAL LENGTH AND DIAMETER

NOTE: HOSES D MUST BE EQUAL LENGTH AND DIAMETER

