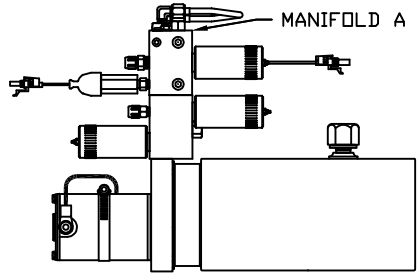


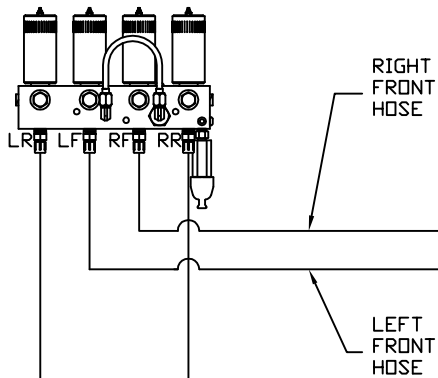
ORIENTATION
← FRONT

NOTE: THIS LEVELING SYSTEM IS FOR COACHES WITH 22.5" TIRES

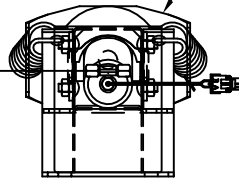


SIDE VIEW OF PUMP/MANIFOLD-AP32358

TOP VIEW - MANIFOLD A

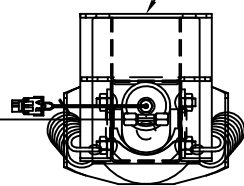


TOP VIEW
AP32034
RIGHT FRONT



NOTE: CROSS TIE REQUIRED FOR FRONT JACKS

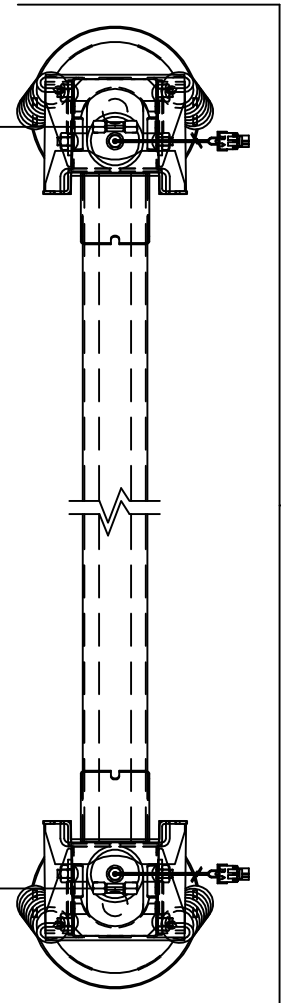
TOP VIEW
AP32034
LEFT FRONT



RIGHT REAR HOSE

LEFT REAR HOSE

TOP VIEW
AP31982
REAR JACKS



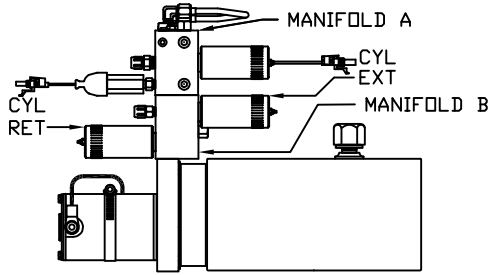
MODEL	HOSE KIT	LF HOSE	RF HOSE	RR HOSE	LR HOSE
G35S	AP19681	AP5352	AP2443	AP4164	AP4163
G38S	AP19679	AP5352	AP2443	AP27563	AP4312

LEVELING SYSTEM: AP33382

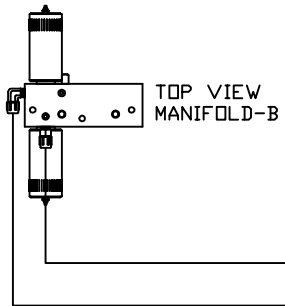
		HWH I-80 EXIT 267 SOUTH RT 1 MOSCOW, IOWA 52760	
SCALE 1:6	DATE 19MAY05	DRAWN BY .	
HYD CONN DIAGRAM			
NO.	DATE	REVISION	
THE INFORMATION DISCLOSED ON THIS DRAWING IS CONFIDENTIAL AND MUST NOT BE DISCLOSED OR USED IN ANY MANNER WHICH WILL BE DETRIMENTAL TO THE HWH CORPORATION			
WINNEBAGO			DRAWING NUMBER MP69432 A/B

ORIENTATION
← FRONT

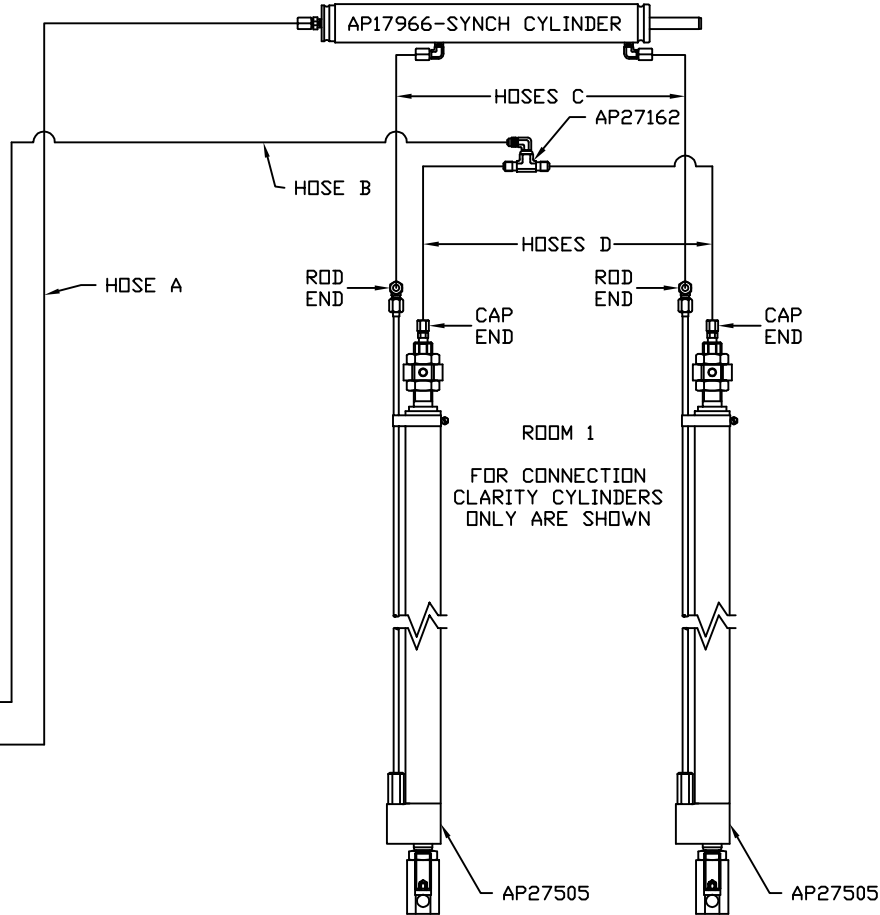
MODEL	HOSE A	HOSE B	HOSES C	HOSES D
G35S	AP5965	AP7358	AP24649	AP4906
G38S	AP5965	AP7358	AP24649	AP4906



SIDE VIEW OF PUMP/MANIFOLD-AP32358



TOP VIEW
MANIFOLD-B



NOTE: HOSES C MUST BE HIGH PRESSURE HOSES OF EQUAL LENGTH AND DIAMETER

NOTE: HOSES D MUST BE EQUAL LENGTH AND DIAMETER

ROOM 1
FOR CONNECTION CLARITY CYLINDERS ONLY ARE SHOWN