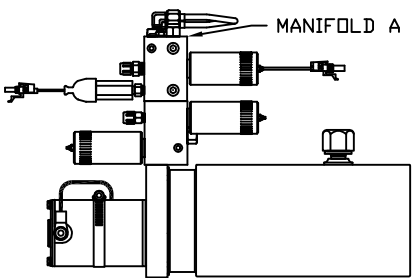
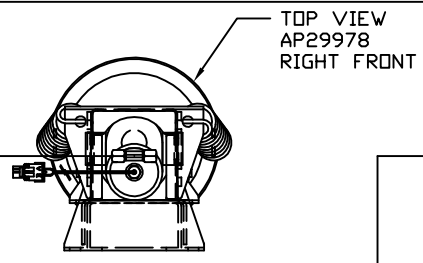
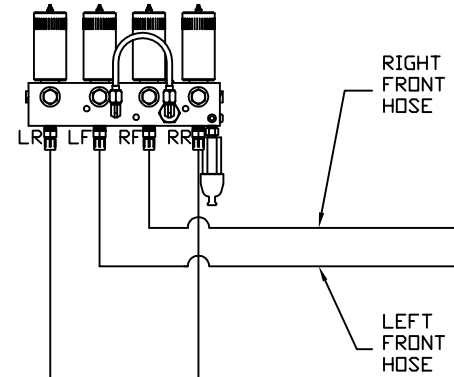


ORIENTATION
← FRONT

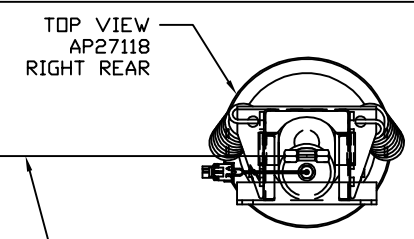


SIDE VIEW OF PUMP/MANIFOLD-AP32359

TOP VIEW - MANIFOLD A

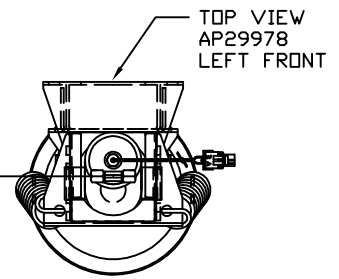


TOP VIEW
AP29978
RIGHT FRONT



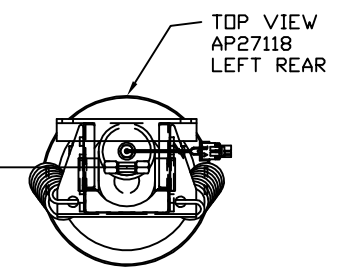
TOP VIEW
AP27118
RIGHT REAR

NOTE: CROSS TIES REQUIRED FOR FRONT AND REAR JACKS



TOP VIEW
AP29978
LEFT FRONT

LEFT REAR HOSE



TOP VIEW
AP27118
LEFT REAR

MODEL	HOSE KIT	LF HOSE	RF HOSE	RR HOSE	LR HOSE
L39T	AP24448	AP2443	AP5352	AP6117	AP5352
L39D	AP24448	AP2443	AP5352	AP6117	AP5352

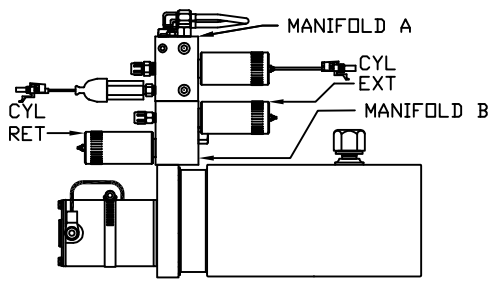
LEVELING SYSTEM: AP31420

		HWH		I-80 EXIT 267 SOUTH RT 1 MOSCOW, IOWA 52760	
		SCALE 1:6	DATE 19MAY05	DRAWN BY .	
		HYD CONN DIAGRAM			
NO.	DATE	REVISION			
		WINNEBAGO		DRAWING NUMBER MP69434 A/B	
<small>THE INFORMATION DISCLOSED ON THIS DRAWING IS CONFIDENTIAL AND MUST NOT BE DISCLOSED OR USED IN ANY MANNER WHICH WILL BE DETRIMENTAL TO THE HWH CORPORATION</small>					

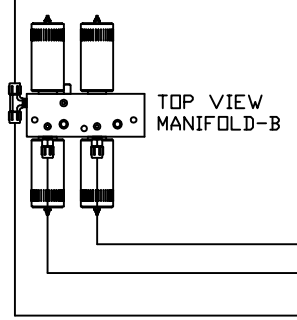
ORIENTATION
 ← FRONT

MODEL	HOSE A	HOSE B	HOSES C	HOSES D	HOSE E	HOSE F
L39T	AP5965	AP7358	AP24649	AP4906	AP6217	AP5925
L39D	AP5965	AP7358	NO INFO AVAILABLE	AP6217	AP5925	AP5925

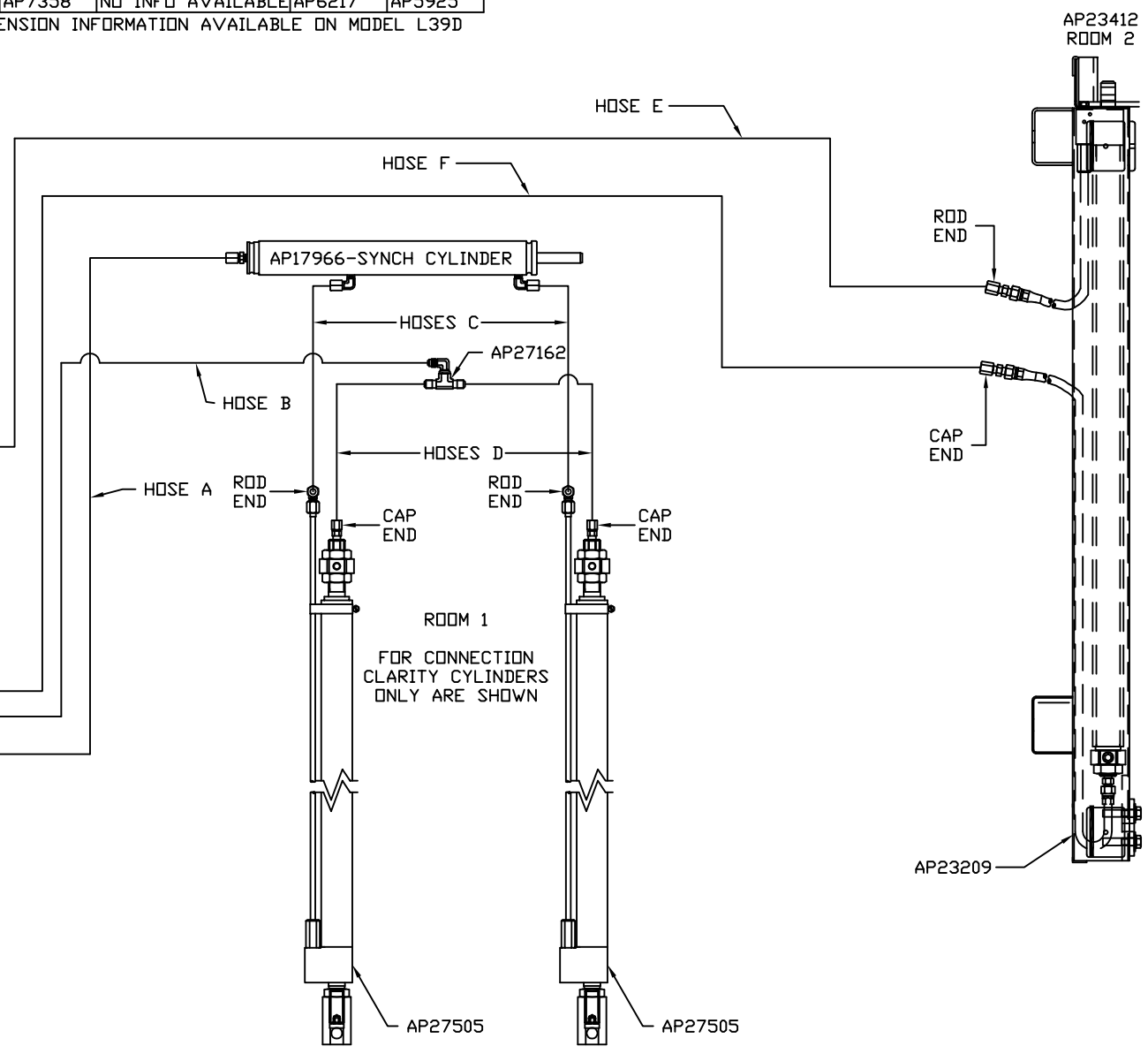
NOTE: NO ROOM EXTENSION INFORMATION AVAILABLE ON MODEL L39D



SIDE VIEW OF PUMP/MANIFOLD-AP32359



TOP VIEW MANIFOLD-B



ROOM 1
 FOR CONNECTION
 CLARITY CYLINDERS
 ONLY ARE SHOWN

NOTE: HOSES C MUST BE HIGH PRESSURE HOSES OF EQUAL LENGTH AND DIAMETER

NOTE: HOSES D MUST BE EQUAL LENGTH AND DIAMETER