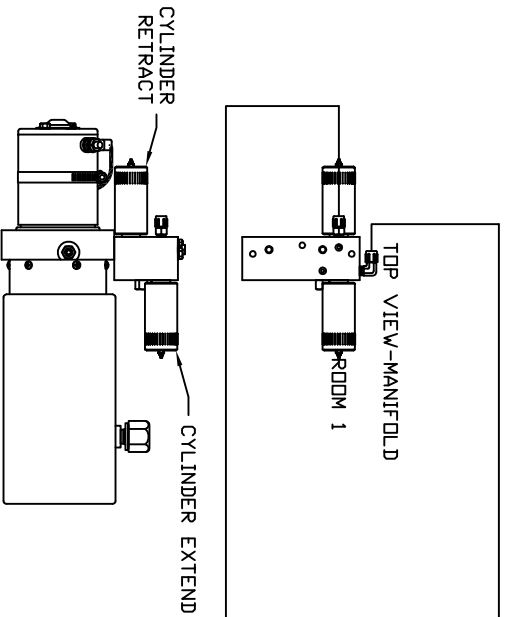


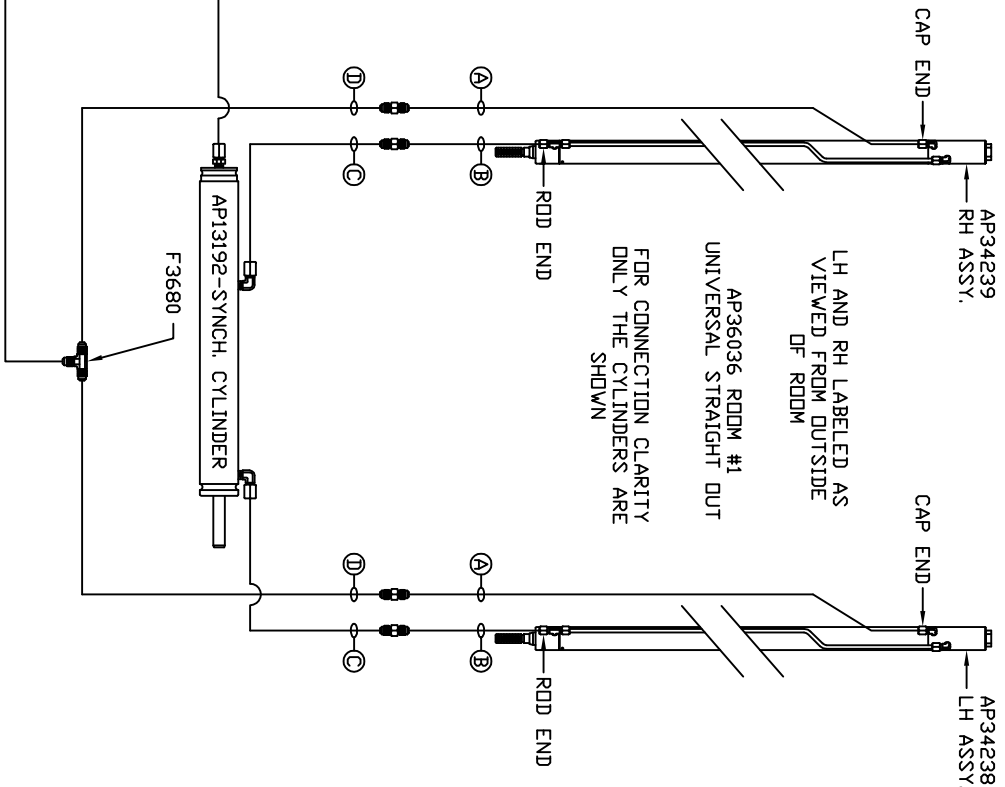
ORIENTATION  
FRONT

NOTE: HOSES ④ AND ⑤ ARE INCLUDED WITH THE ROOM EXTENSION MECHANISM, ALL OTHER HOSES ARE .25" IN DIAMETER AND ARE SUPPLIED BY THE DEM UNLESS NOTED

- ④ AP24878 HOSE ASSY HWH02HP x 86' ROD END - ALWAYS PRESSURIZED - MUST BE HIGH PRESSURE HOSES OF EQUAL LENGTH AND DIAMETER
- ⑤ AP24632 HOSE ASSY HWH02HP x 48' CAP END - MUST MAINTAIN EQUAL LENGTH AND DIAMETER
- ⑥ ROD END - .125 DIA - ALWAYS PRESSURIZED - MUST BE HIGH PRESSURE HOSES OF EQUAL LENGTH AND DIAMETER
- ⑦ CAP END - MUST MAINTAIN EQUAL LENGTH AND DIAMETER



SIDE VIEW PUMP/MANIFOLD-AP32369  
LOCATION AND ORIENTATION OF PUMP/MANIFOLD ASSEMBLY WILL DIFFER DEPENDING UPON DEM.



CONTROL PACKAGE: AP36037

NO.	DATE	REVISION

THE INFORMATION DISCLOSED ON THIS DRAWING IS CONFIDENTIAL AND MUST NOT BE DISCLOSED OR USED IN ANY MANNER WHICH WILL BE DETRIMENTAL TO THE HWH CORPORATION

SCALE 1:6 DATE 07 JUL 05 DRAWN BY  
**HWH** 1-80 EXIT 267 SOUTH  
 RT 1 MOSCOW, IDWA 52760  
**HYD CONN DIAGRAM**  
 DRAWING NUMBER  
**MP69464**