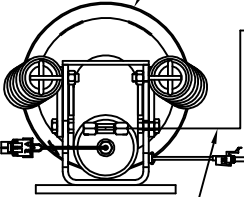
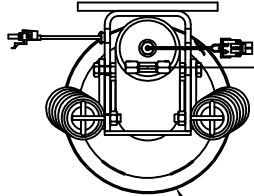


ORIENTATION
← FRONT

TOP VIEW
AP33345
RIGHT FRONT

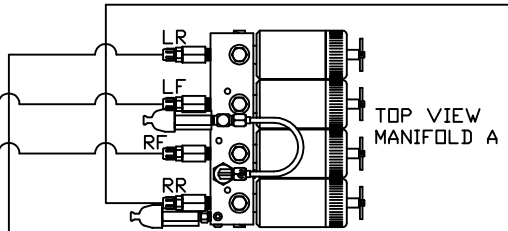


RIGHT
FRONT
HOSE

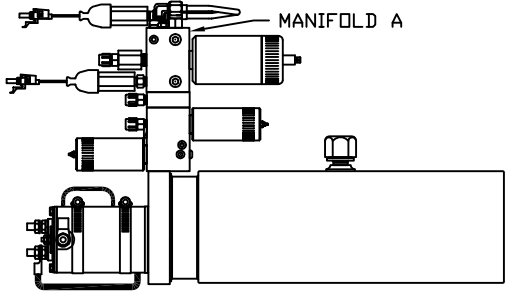


LEFT
FRONT
HOSE

TOP VIEW
AP33345
LEFT FRONT



TOP VIEW
MANIFOLD A

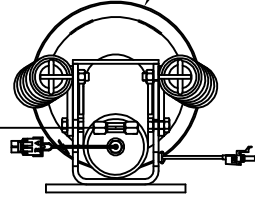


SIDE VIEW OF PUMP/MANIFOLD-AP36778

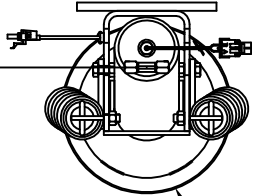
RIGHT
REAR
HOSE

LEFT
REAR
HOSE

TOP VIEW
AP33345
RIGHT REAR



NOTE: CROSS TIES REQUIRED
FOR FRONT AND REAR JACKS



TOP VIEW
AP33345
LEFT REAR

MODEL	HOSE KIT	LF HOSE	RF HOSE	RR HOSE	LR HOSE
R36LD	AP19679	AP2443	AP5352	AP27563	AP4312
R36RD	AP19679	AP2443	AP5352	AP27563	AP4312
R40S	AP24448	AP2443	AP5352	AP6117	AP5352
S40KD	AP24448	AP2443	AP5352	AP6117	AP5352

LEVELING SYSTEM: AP36741

NO.	DATE	REVISION

HWH I-80 EXIT 267 SOUTH
RT 1 MOSCOW, IOWA 52760

SCALE 1:6 DATE 29DEC05 DRAWN BY .

HYD CONN DIAGRAM

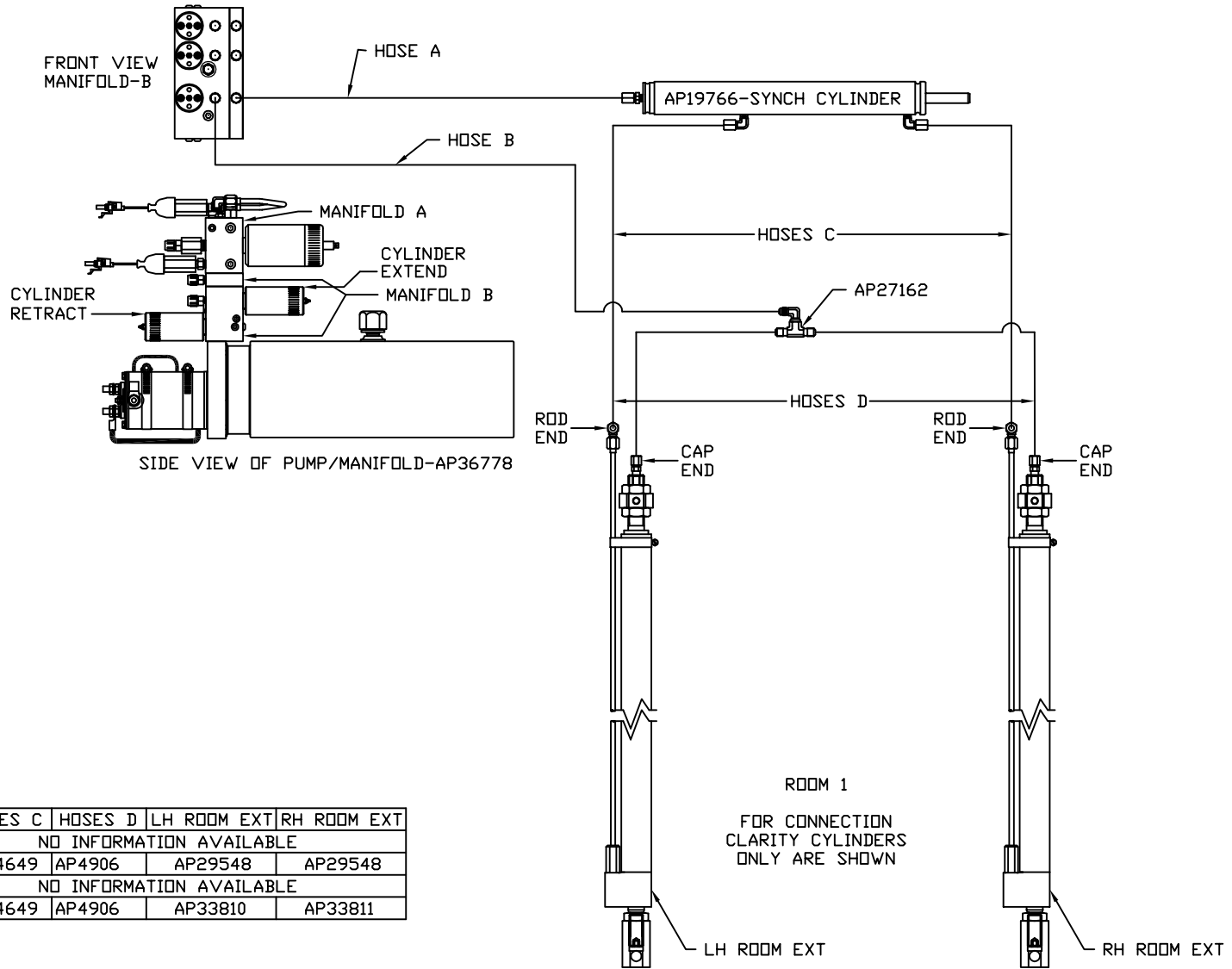
THE INFORMATION DISCLOSED ON THIS DRAWING IS CONFIDENTIAL AND MUST NOT BE DISCLOSED OR USED IN ANY MANNER WHICH WILL BE DETRIMENTAL TO THE HWH CORPORATION

WINNEBAGO DRAWING NUMBER
MP69505 A/F

ORIENTATION
 ← FRONT

NOTE: HOSES C MUST BE HIGH PRESSURE HOSES OF EQUAL LENGTH AND DIAMETER

NOTE: HOSES D MUST BE EQUAL LENGTH AND DIAMETER



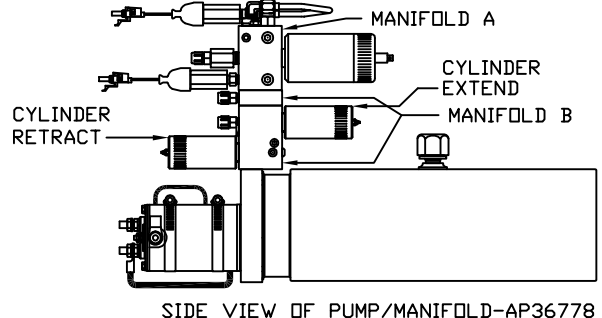
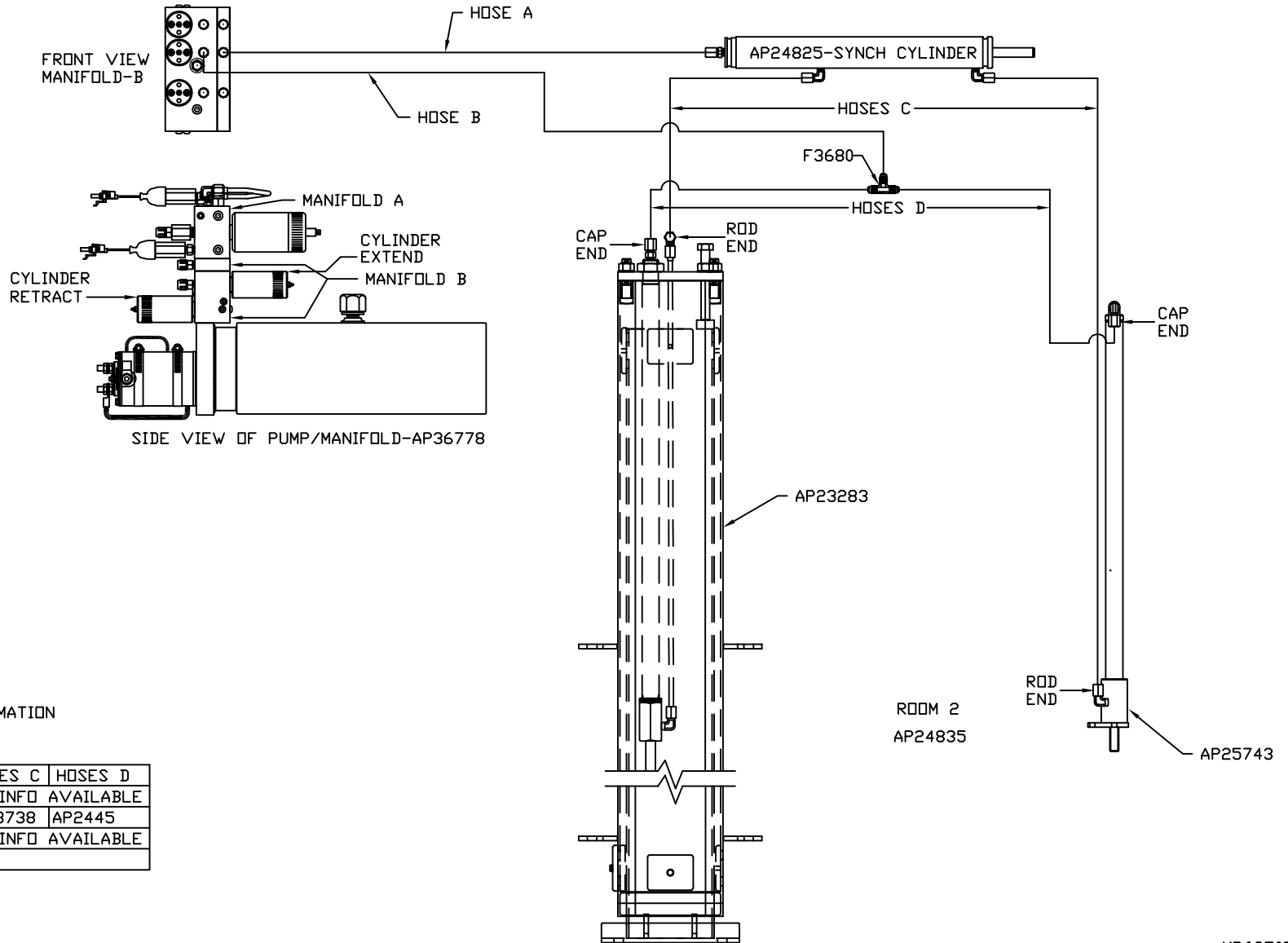
MODEL	HOSE A	HOSE B	HOSES C	HOSES D	LH ROOM EXT	RH ROOM EXT
R36LD	AP5924	AP11212	NO INFORMATION AVAILABLE			
R36RD	AP5924	AP11212	AP24649	AP4906	AP29548	AP29548
R40S	AP5924	AP11212	NO INFORMATION AVAILABLE			
S40KD	AP5924	AP11212	AP24649	AP4906	AP33810	AP33811

ORIENTATION

← FRONT

NOTE: HOSES C MUST BE HIGH PRESSURE HOSES OF EQUAL LENGTH AND DIAMETER

NOTE: HOSES D MUST BE EQUAL LENGTH AND DIAMETER

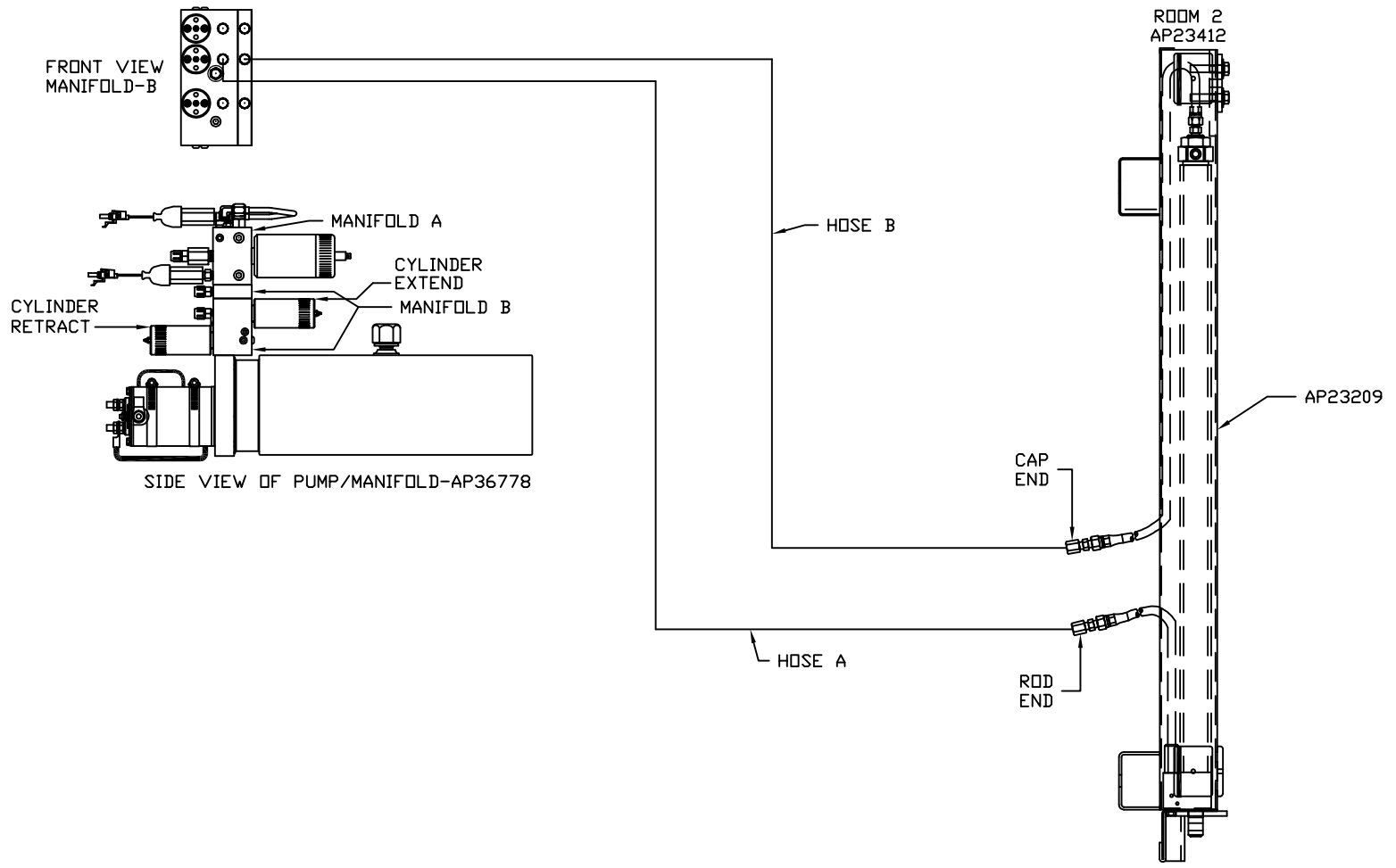


NOTE: NO ROOM EXTENSION INFORMATION ON MODELS R36LD AND R40S

MODEL	HOSE A	HOSE B	HOSES C	HOSES D
R36LD	AP6117	AP4669	NO INFO AVAILABLE	
R36RD	AP6117	AP4669	AP23738	AP2445
R40S	AP6217	AP5925	NO INFO AVAILABLE	
S40KD	SEE MP69505 D			

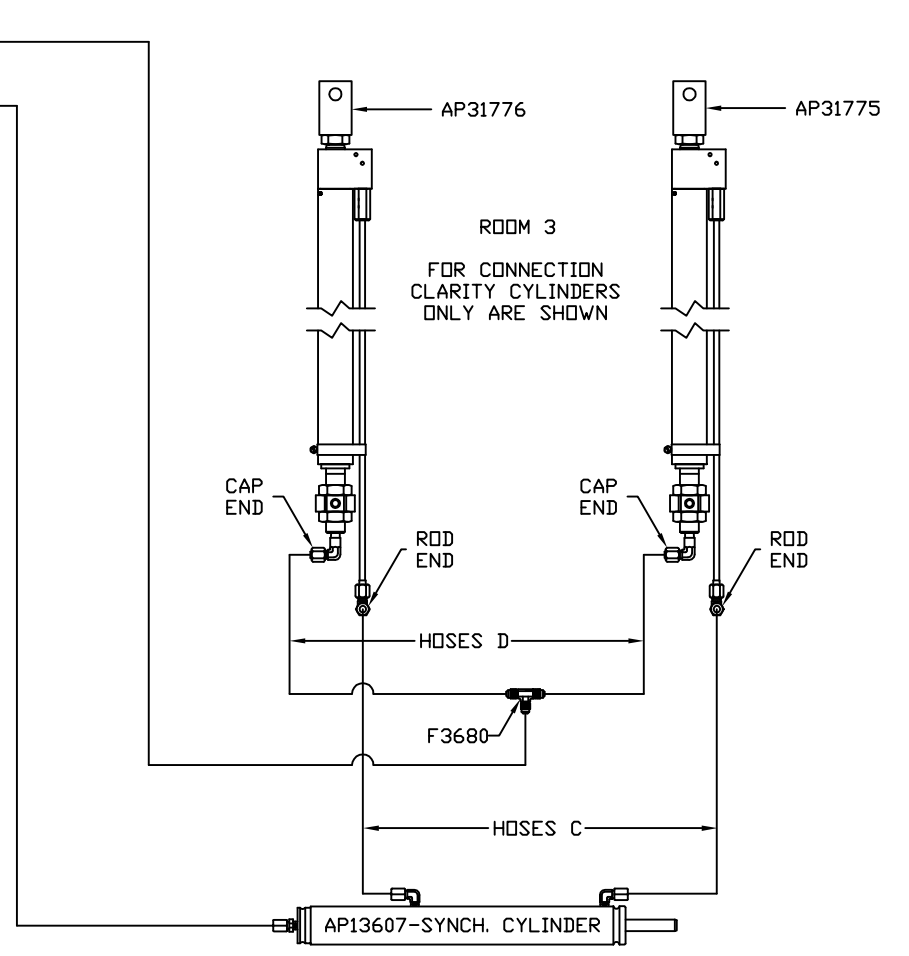
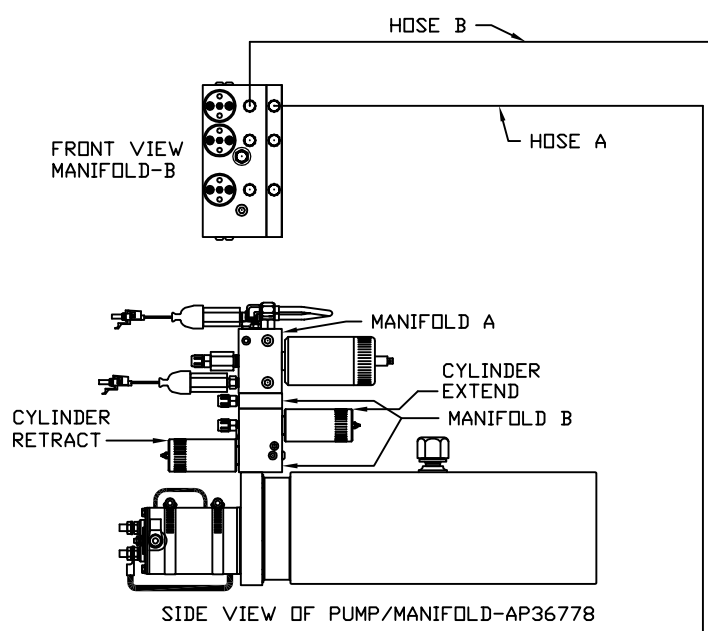
ORIENTATION

← FRONT



MODEL	HOSE A	HOSE B
R36LD	SEE MP69505 C	
R36RD	SEE MP69505 C	
R40S	SEE MP69505 C	
S40KD	AP6217	AP5925

ORIENTATION
 ← FRONT



NOTE: NO ROOM EXTENSION INFORMATION
 ON MODELS R36LD AND R40S

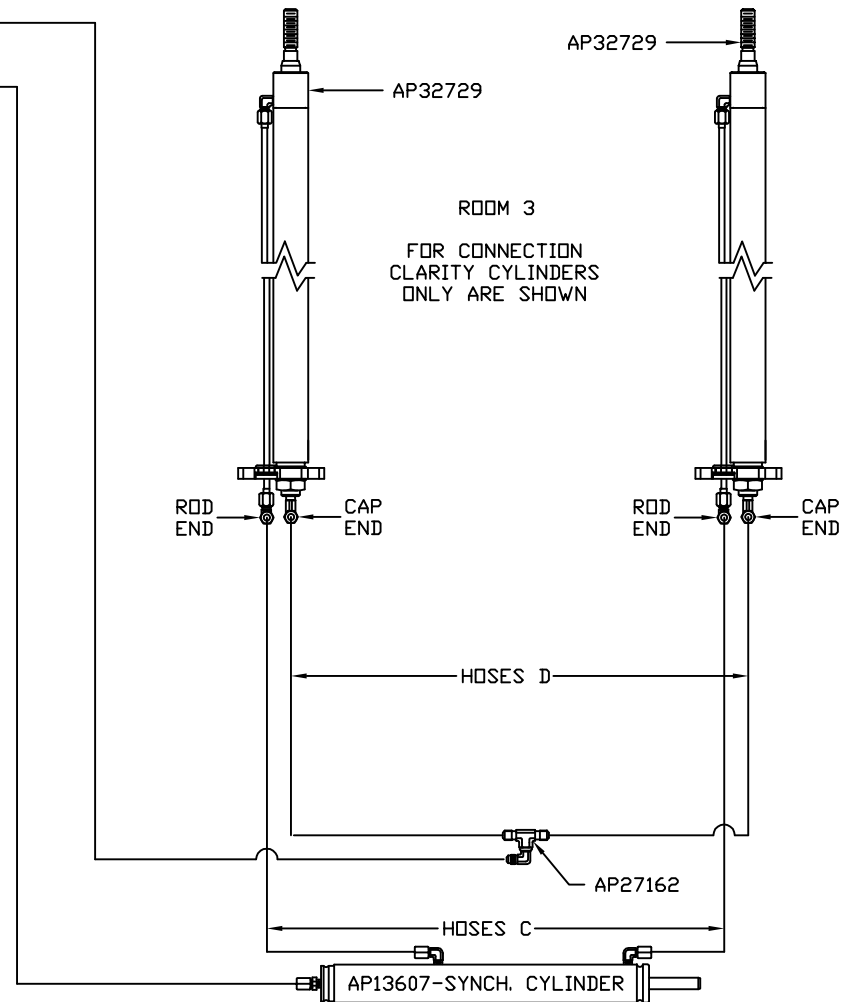
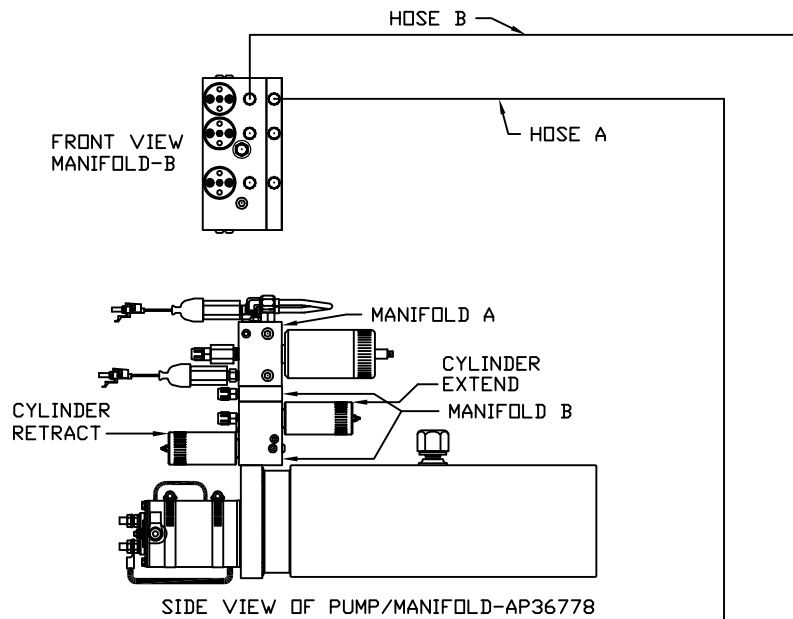
MODEL	HOSE A	HOSE B	HOSES C	HOSES D
R36LD	AP5965	AP7358	NO INFO AVAILABLE	
R36RD	AP5965	AP7358	AP24649	AP4906
R40S	AP5965	AP7358	NO INFO AVAILABLE	
S40KD	SEE MP69505 F			

ORIENTATION

← FRONT

NOTE: HOSES C MUST BE HIGH PRESSURE HOSES OF EQUAL LENGTH AND DIAMETER

NOTE: HOSES D MUST BE EQUAL LENGTH AND DIAMETER



MODEL	HOSE A	HOSE B	HOSES C	HOSES D
R36LD	SEE MP69505 E			
R36RD	SEE MP69505 E			
R40S	SEE MP69505 E			
S40KD	AP5965	AP7358	AP24642	AP5384