

NOTE: NEWMAR WILL PURCHASE BULK HOSE AND FITTINGS FROM HWH CORPORATION.

NOTE: INSTALLATION MUST CONFORM TO GOOD SHOP PRACTICES, SAE STANDARDS, RVIA STANDARDS, AND OTHER APPLICABLE STANDARDS. LEVELING SYSTEM: AP37399

4	04APR07	ADDED INSTALLATION NOTE
△	05OCT06	WAS F2539
△	30JUN06	WAS AP29967
1	30MAY06	ADDED STEEL TUBING
NO.	DATE	REVISION

HWH 1-80 EXIT 267 SOUTH
RT 1 MOSCOW, IOWA 52760

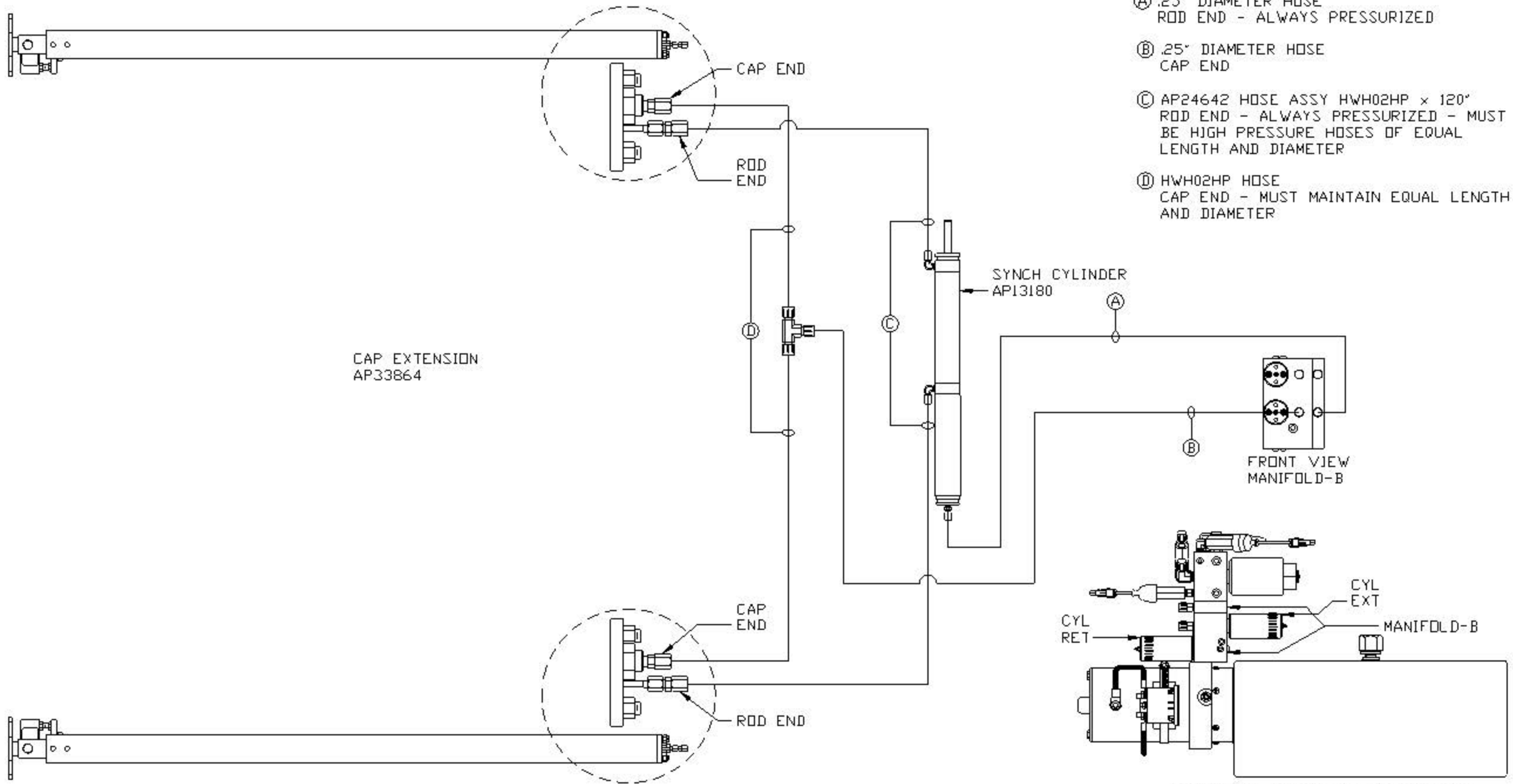
SCALE 1:6 DATE 15FEB06 DRAWN BY

HYD CONN DIAGRAM

NEWMAR K3 DRAWING NUMBER MP69541 A/C

THE INFORMATION DISCLOSED ON THIS DRAWING IS CONFIDENTIAL AND MUST NOT BE DISCLOSED OR USED IN ANY MANNER WHICH WILL BE DETRIMENTAL TO THE HWH CORPORATION

ORIENTATION
FRONT



- Ⓐ .25" DIAMETER HOSE
ROD END - ALWAYS PRESSURIZED
- Ⓑ .25" DIAMETER HOSE
CAP END
- Ⓒ AP24642 HOSE ASSY HWH02HP x 120"
ROD END - ALWAYS PRESSURIZED - MUST
BE HIGH PRESSURE HOSES OF EQUAL
LENGTH AND DIAMETER
- Ⓓ HWH02HP HOSE
CAP END - MUST MAINTAIN EQUAL LENGTH
AND DIAMETER

CAP EXTENSION
AP33864

NOTE: NEWMAR WILL PURCHASE BULK HOSE
AND FITTINGS FROM HWH CORPORATION. HOSE
"C" IS INCLUDED WITH THE LEVELING SYSTEM.

FRONT VIEW
MANIFOLD-B

CYL
RET

CYL
EXT

MANIFOLD-B

SIDE VIEW PUMP/MANIFOLD-AP36944

LOCATION AND ORIENTATION OF
PUMP/MANIFOLD ASSEMBLY WILL
DIFFER DEPENDING UPON O.E.M.

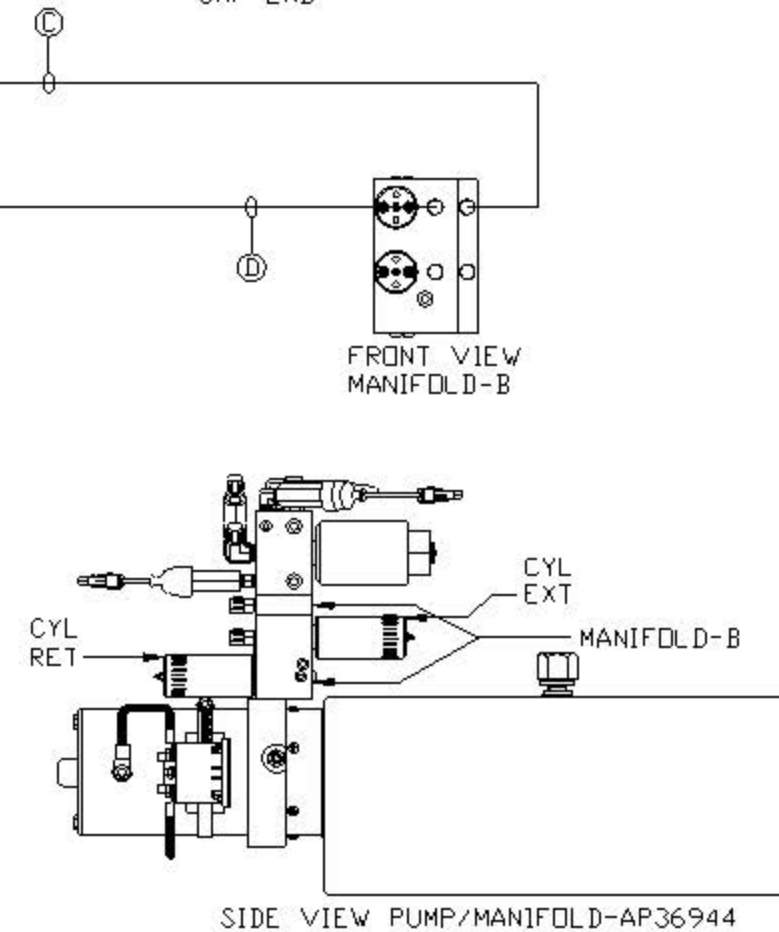
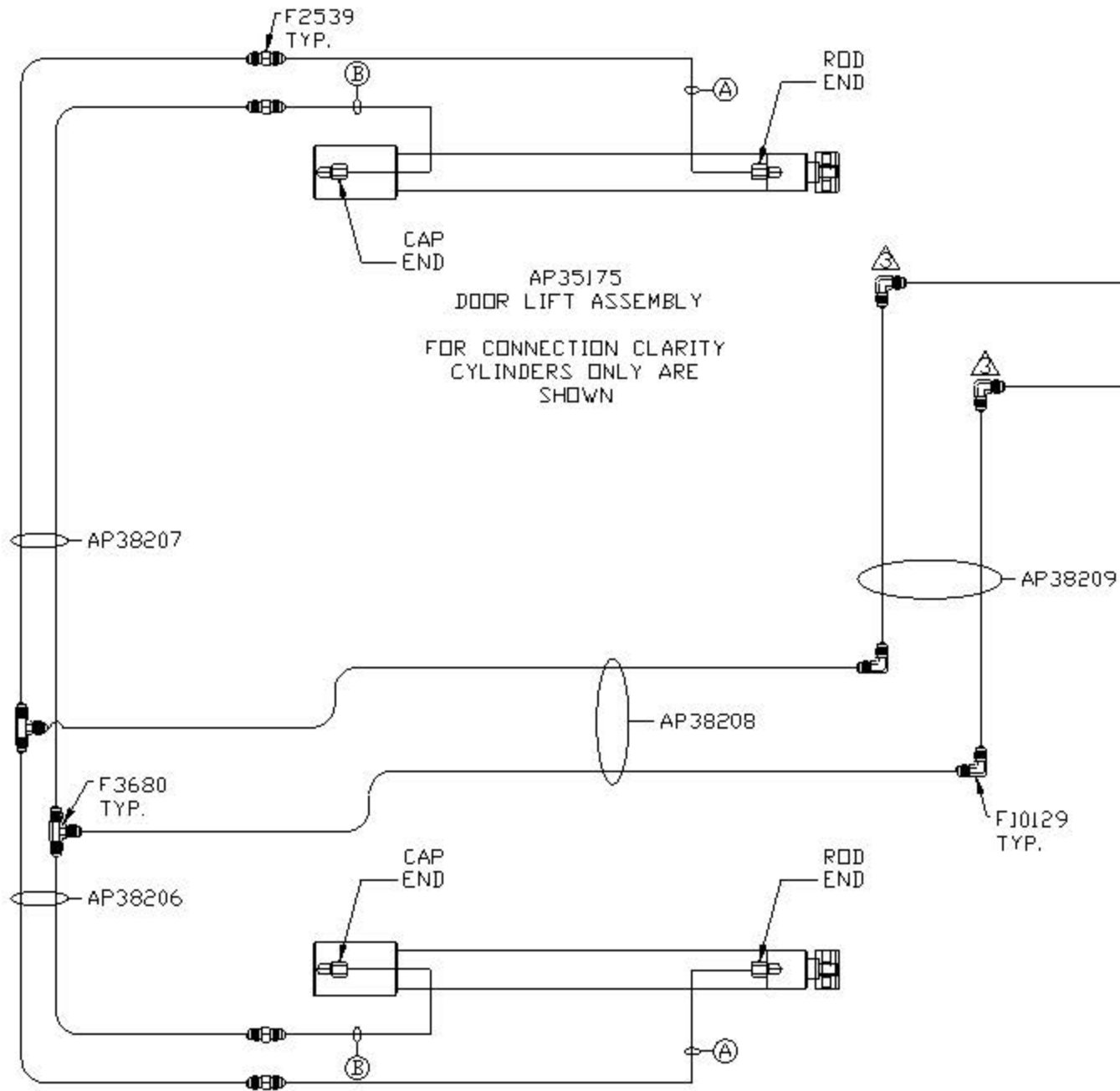
NOTE: INSTALLATION MUST CONFORM TO GOOD SHOP PRACTICES, SAE
STANDARDS, RVIA STANDARDS, AND OTHER APPLICABLE STANDARDS.

MP69541 B/C
04APR07

NOTE: NEWMAR WILL PURCHASE BULK HOSE AND FITTINGS FROM HWH CORPORATION.

NOTE: HOSES (A) AND (B) ARE INCLUDED WITH THE ROOM EXTENSION MECHANISM

- (A) AP34246 HOSE ASSY HWH02HP x 39"
 ROD END - ALWAYS PRESSURIZED - MUST BE HIGH PRESSURE HOSES OF EQUAL LENGTH AND DIAMETER
- (B) AP32672 HOSE ASSY HWH02HP x 15"
 CAP END - MUST MAINTAIN EQUAL LENGTH AND DIAMETER
- (C) .25" DIAMETER HOSE
 ROD END - ALWAYS PRESSURIZED
- (D) .25" DIAMETER HOSE
 CAP END



LOCATION AND ORIENTATION OF PUMP/MANIFOLD ASSEMBLY WILL DIFFER DEPENDING UPON O.E.M.