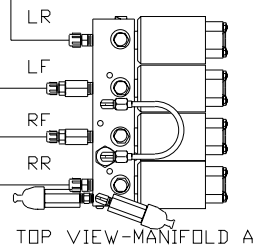
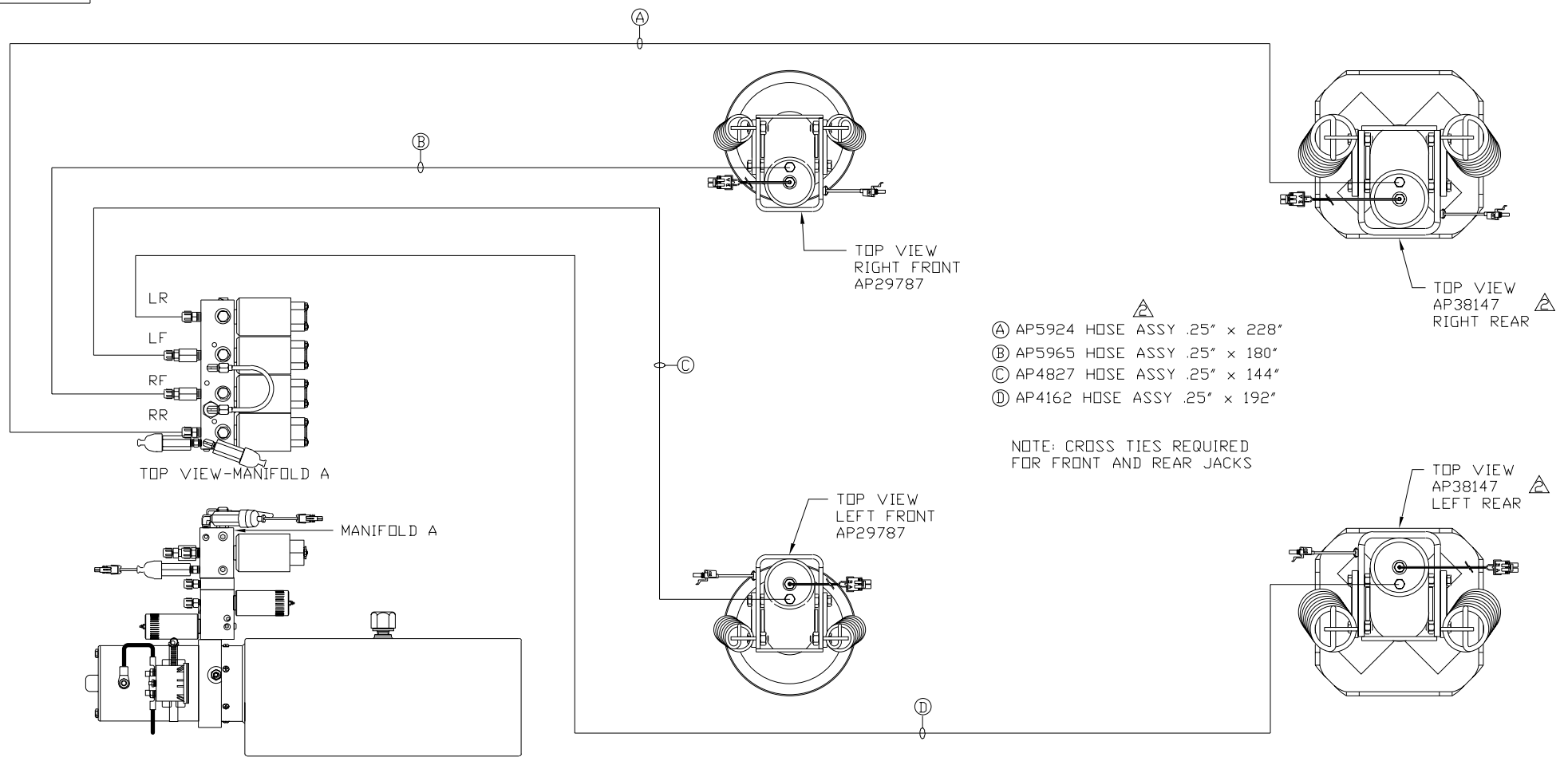
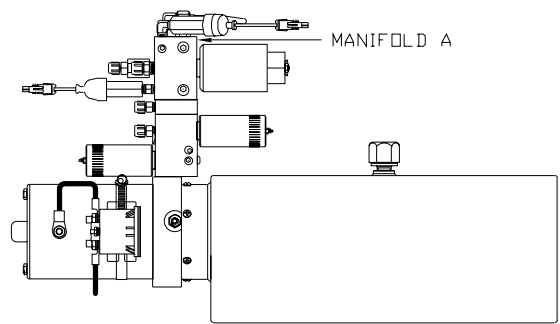


ORIENTATION

← FRONT



TOP VIEW-MANIFOLD A



SIDE VIEW PUMP/MANIFOLD-AP39438

LOCATION AND ORIENTATION OF PUMP/MANIFOLD ASSEMBLY WILL DIFFER DEPENDING UPON O.E.M.

- ⚠ A AP5924 HOSE ASSY .25" x 228"
- ⚠ B AP5965 HOSE ASSY .25" x 180"
- ⚠ C AP4827 HOSE ASSY .25" x 144"
- ⚠ D AP4162 HOSE ASSY .25" x 192"

NOTE: CROSS TIES REQUIRED FOR FRONT AND REAR JACKS

NOTE: INSTALLATION MUST CONFORM TO GOOD SHOP PRACTICES, SAE STANDARDS, RVIA STANDARDS, AND OTHER APPLICABLE STANDARDS.

LEVELING SYSTEM: AP40344

⚠	29JUL08	WAS AP29783, UP'D HOSES
1	06AUG07	CORRECTED TYPO
NO.	DATE	REVISION
THE INFORMATION DISCLOSED ON THIS DRAWING IS CONFIDENTIAL AND MUST NOT BE DISCLOSED OR USED IN ANY MANNER WHICH WILL BE DETRIMENTAL TO THE HWH CORPORATION		

HWH			I-80 EXIT 267 SOUTH RT 1 MOSCOW, IOWA 52760		
SCALE 1:6	DATE 09APR07	DRAWN BY .			
HYD CONN DIAGRAM					
SVI TRUCKS				DRAWING NUMBER MP69777 A/B	

ORIENTATION

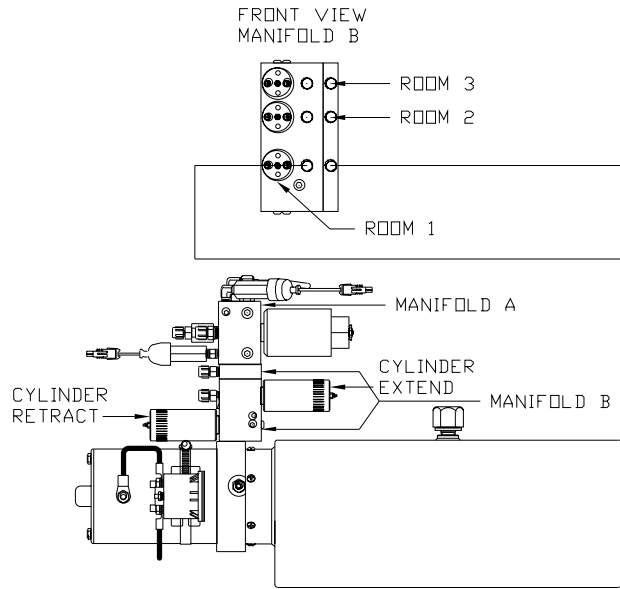
← FRONT

\*: AP38604 IS PART OF THE ROOM EXTENSION MECHANISM.

- Ⓐ OEM SUPPLIED HOSE  
ROD END - ALWAYS PRESSURIZED
- Ⓑ OEM SUPPLIED HOSE  
CAP END
- Ⓒ OEM SUPPLIED HOSE  
ROD END - ALWAYS PRESSURIZED - MUST  
BE HIGH PRESSURE HOSES OF EQUAL  
OF EQUAL LENGTH AND DIAMETER
- Ⓓ OEM SUPPLIED HOSE  
CAP END - MUST MAINTAIN EQUAL LENGTH  
AND DIAMETER

NOTE: HOSES Ⓔ AND Ⓕ ARE INCLUDED  
WITH THE ROOM EXTENSION MECHANISM.

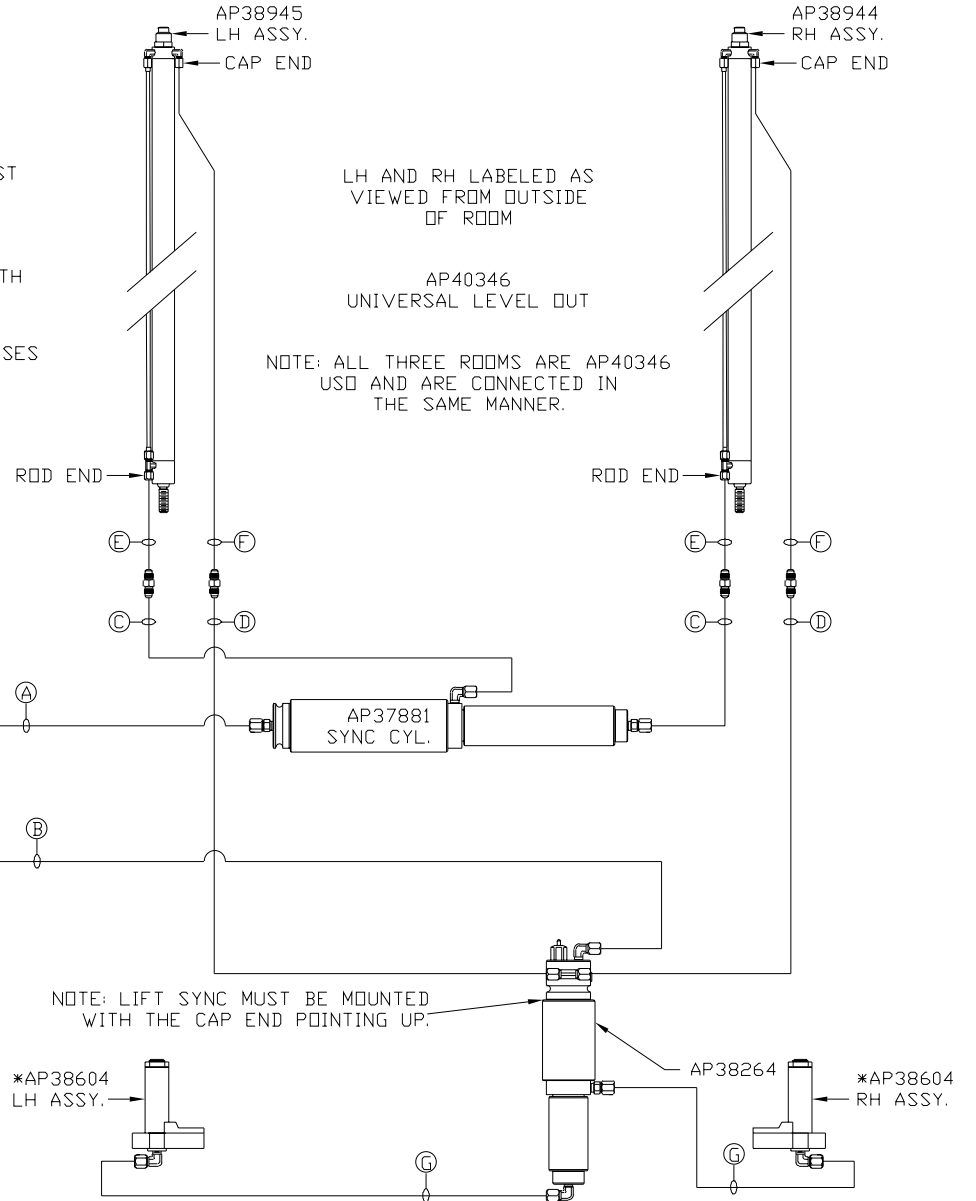
- Ⓔ AP24632 HOSE ASSY HWH02HP x 48"  
ROD END - ALWAYS PRESSURIZED - MUST  
BE HIGH PRESSURE HOSES OF EQUAL  
LENGTH AND DIAMETER
- Ⓕ AP24818 HOSE ASSY HWH02HP x 86"  
CAP END - MUST MAINTAIN EQUAL LENGTH  
AND DIAMETER
- Ⓖ OEM SUPPLIED HOSE  
CAP END - MUST BE HIGH PRESSURE HOSES  
OF EQUAL LENGTH AND DIAMETER



SIDE VIEW PUMP/MANIFOLD-AP39438

LOCATION AND ORIENTATION OF  
PUMP/MANIFOLD ASSEMBLY WILL  
DIFFER DEPENDING UPON O.E.M.

NOTE: INSTALLATION MUST CONFORM TO GOOD SHOP PRACTICES, SAE  
STANDARDS, RVIA STANDARDS, AND OTHER APPLICABLE STANDARDS.



LH AND RH LABELED AS  
VIEWED FROM OUTSIDE  
OF ROOM

AP40346  
UNIVERSAL LEVEL OUT

NOTE: ALL THREE ROOMS ARE AP40346  
USED AND ARE CONNECTED IN  
THE SAME MANNER.

NOTE: LIFT SYNC MUST BE MOUNTED  
WITH THE CAP END POINTING UP.

\*AP38604  
LH ASSY.

AP38264

\*AP38604  
RH ASSY.