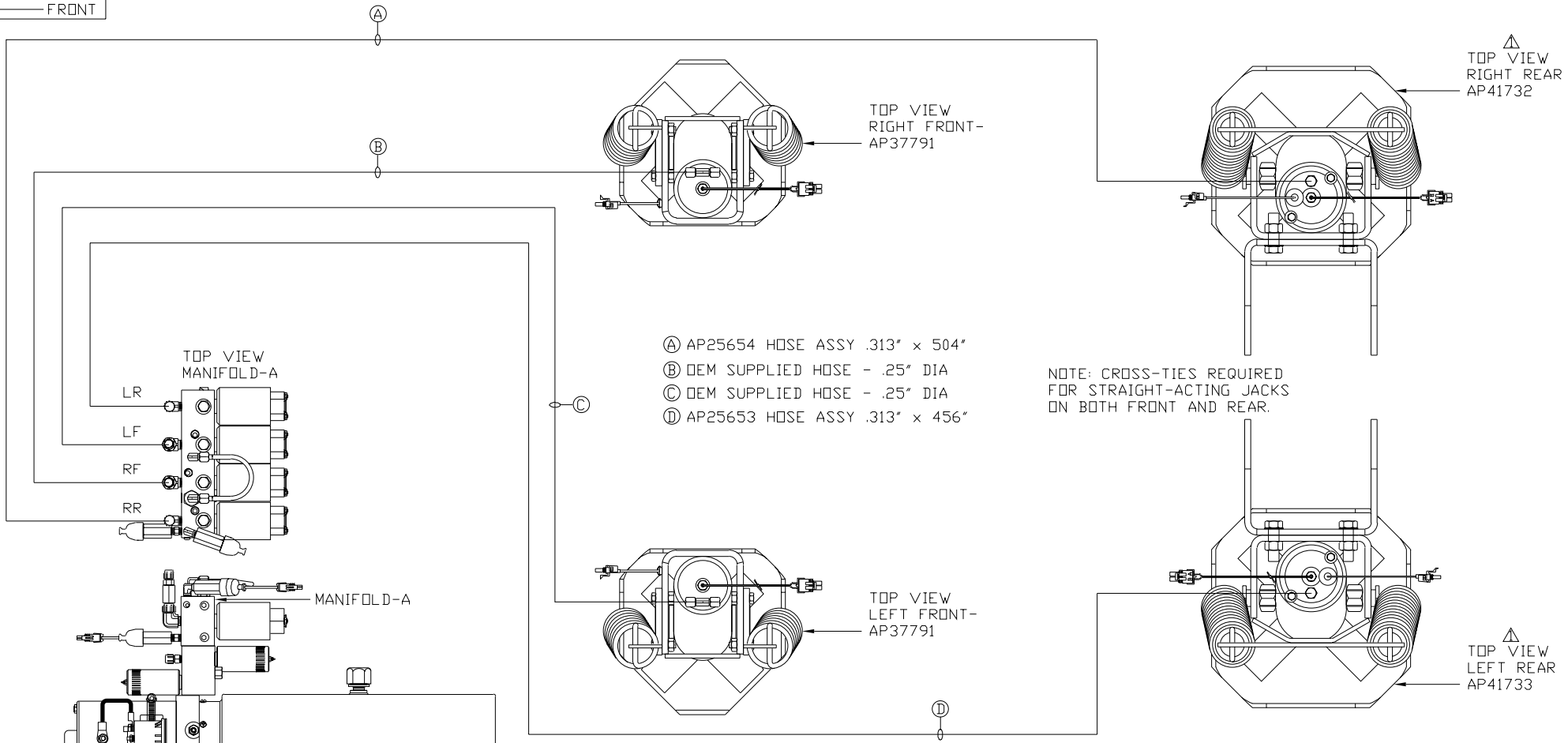


ORIENTATION

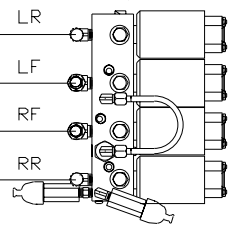
← FRONT



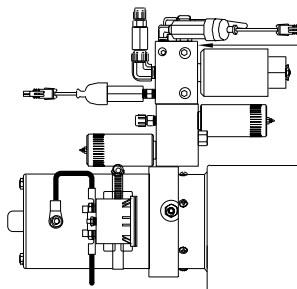
- Ⓐ AP25654 HOSE ASSY .313" x 504"
- Ⓑ DEM SUPPLIED HOSE - .25" DIA
- Ⓒ DEM SUPPLIED HOSE - .25" DIA
- Ⓓ AP25653 HOSE ASSY .313" x 456"

NOTE: CROSS-TIES REQUIRED FOR STRAIGHT-ACTING JACKS ON BOTH FRONT AND REAR.

TOP VIEW
MANIFOLD-A



MANIFOLD-A



SIDE VIEW PUMP/MANIFOLD-AP40021

LOCATION AND ORIENTATION OF PUMP/MANIFOLD ASSEMBLY WILL DIFFER DEPENDING UPON D.E.M.

NOTE: INSTALLATION MUST CONFORM TO GOOD SHOP PRACTICES, SAE STANDARDS, RVIA STANDARDS, AND OTHER APPLICABLE STANDARDS.

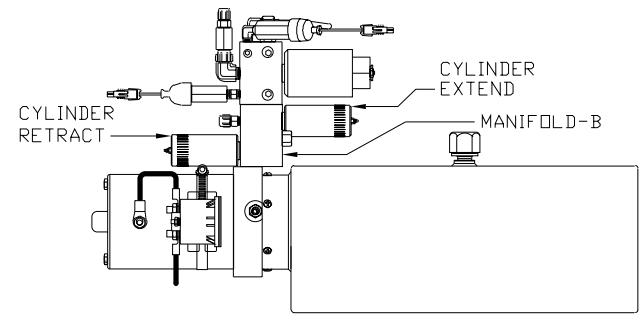
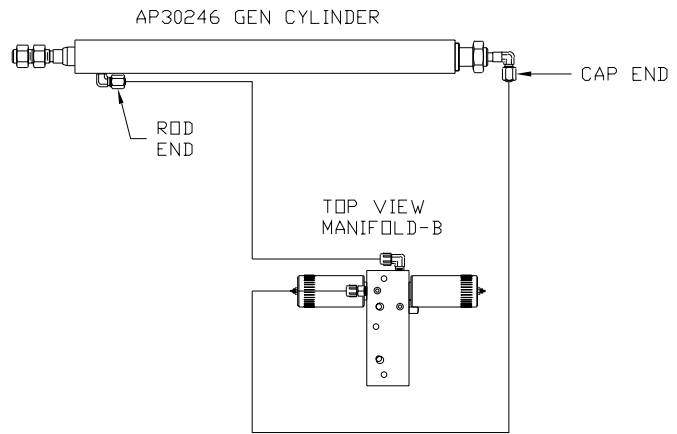
LEVELING SYSTEM: AP41390

△	23JUL08	WAS AP41064, AP41065
NO.	DATE	REVISION
THE INFORMATION DISCLOSED ON THIS DRAWING IS CONFIDENTIAL AND MUST NOT BE DISCLOSED OR USED IN ANY MANNER WHICH WILL BE DETRIMENTAL TO THE HWH CORPORATION		

HWH			I-80 EXIT 267 SOUTH RT 1 MOSCOW, IOWA 52760		
SCALE 1:6	DATE 31AUG07	DRAWN BY .			
HYD CONN DIAGRAM					
NEWMAR K2				DRAWING NUMBER MP69887 A/B	

ORIENTATION

← FRONT



SIDE VIEW PUMP/MANIFOLD-AP40021

LOCATION AND ORIENTATION OF
PUMP/MANIFOLD ASSEMBLY WILL
DIFFER DEPENDING UPON O.E.M.

NOTE: INSTALLATION MUST CONFORM TO GOOD SHOP PRACTICES, SAE
STANDARDS, RVIA STANDARDS, AND OTHER APPLICABLE STANDARDS.

MP69887 B/B
31AUG07