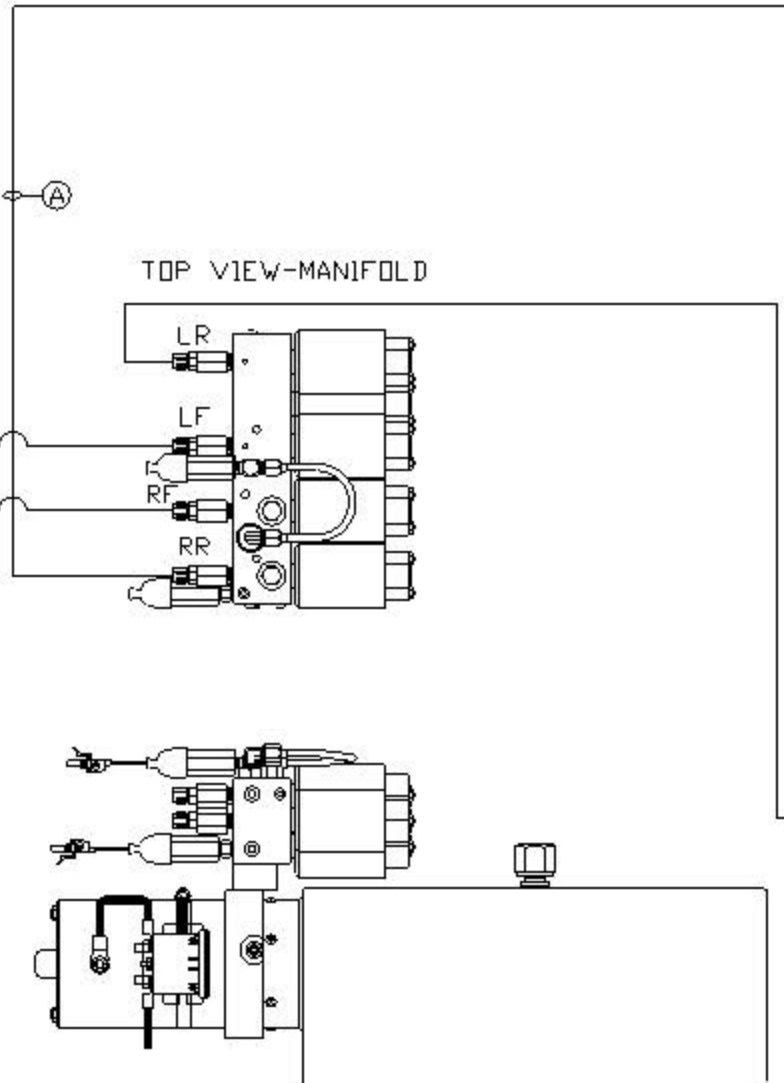
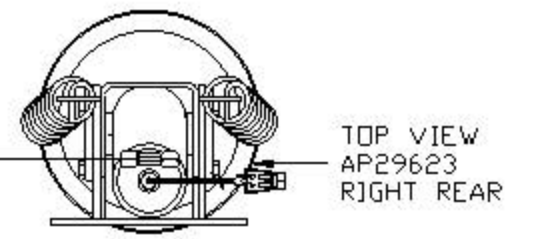
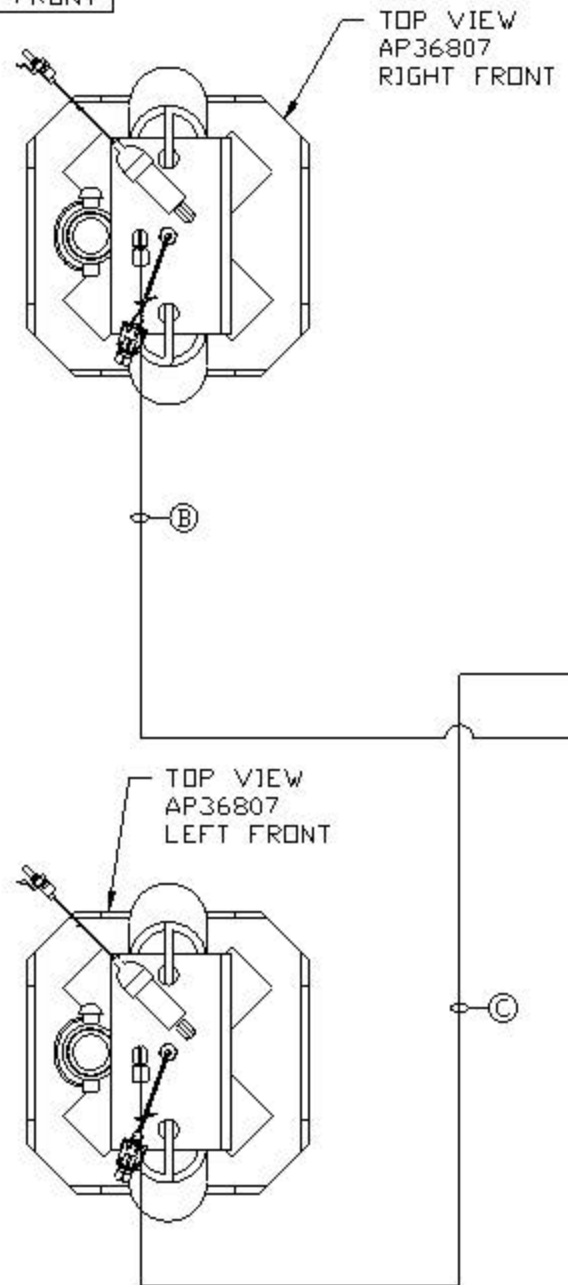
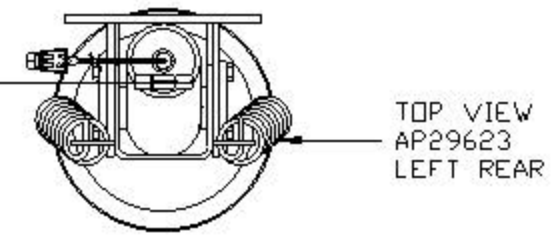


ORIENTATION
← FRONT



CROSS TIES REQUIRED FOR REAR JACKS

- Ⓐ AP2465 HOSE ASSY .25" x 348"
- Ⓑ AP4162 HOSE ASSY .25" x 192"
- Ⓒ AP6115 HOSE ASSY .25" x 168"
- Ⓓ AP5561 HOSE ASSY .25" x 336"



SIDE VIEW PUMP/MANIFOLD-AP42370

LOCATION AND ORIENTATION OF PUMP/MANIFOLD ASSEMBLY WILL DIFFER DEPENDING UPON O.E.M.

NOTE: INSTALLATION MUST CONFORM TO GOOD SHOP PRACTICES, SAE STANDARDS, RVIA STANDARDS, AND OTHER APPLICABLE STANDARDS.

LEVELING SYSTEM: AP42314

NO.	DATE	REVISION
THE INFORMATION DISCLOSED ON THIS DRAWING IS CONFIDENTIAL AND MUST NOT BE DISCLOSED OR USED IN ANY MANNER WHICH WILL BE DETRIMENTAL TO THE HWH CORPORATION		

HWH			1-80 EXIT 267 SOUTH RT 1 MOSCOW, IOWA 52760	
SCALE 1:6	DATE 13MAR08	DRAWN BY		
HYD CONN DIAGRAM				
NEWMAR			DRAWING NUMBER MP69969	