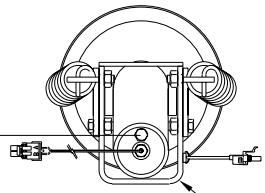


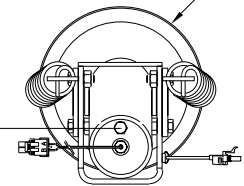
ORIENTATION

← FRONT

Ⓐ



TOP VIEW
AP42564
RIGHT FRONT



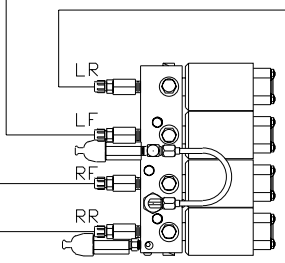
TOP VIEW
AP41174
RIGHT REAR

Ⓑ

- Ⓐ AP2465 HOSE ASSY .25" x 348"
- Ⓑ AP4827 HOSE ASSY .25" x 144"
- Ⓒ AP5352 HOSE ASSY .25" x 96"
- Ⓓ AP5216 HOSE ASSY .25" x 312"

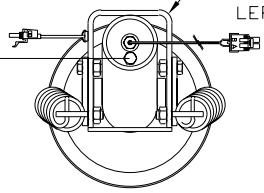
NOTE: CROSS TIES REQUIRED FOR FRONT AND REAR JACKS

Ⓒ

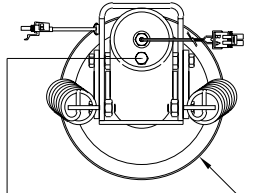


TOP VIEW-MANIFOLD

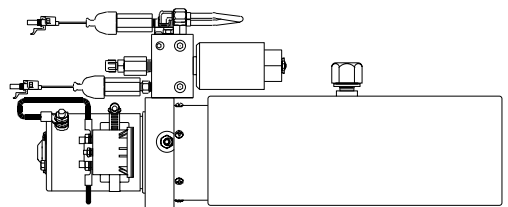
TOP VIEW
AP42564
LEFT FRONT



TOP VIEW
AP41174
LEFT REAR



Ⓓ



SIDE VIEW PUMP/MANIFOLD-AP36195

LOCATION AND ORIENTATION OF PUMP/MANIFOLD ASSEMBLY WILL DIFFER DEPENDING UPON O.E.M.

NOTE: INSTALLATION MUST CONFORM TO GOOD SHOP PRACTICES, SAE STANDARDS, RVIA STANDARDS, AND OTHER APPLICABLE STANDARDS.

JACK KIT: AP43257
CONTROL KIT: AP43254

NO.	DATE	REVISION

HWH I-80 EXIT 267 SOUTH
RT 1 MOSCOW, IOWA 52760

SCALE 1:6 DATE 07AUG08 DRAWN BY .

HYD CONN DIAGRAM

MEDICAL COACHES DRAWING NUMBER MP70035