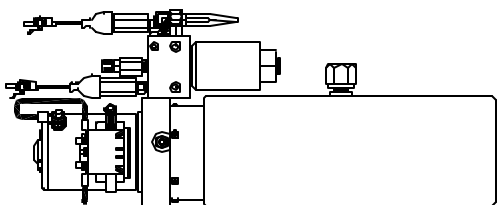
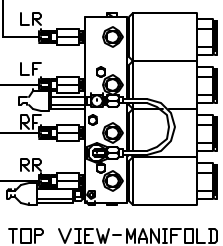
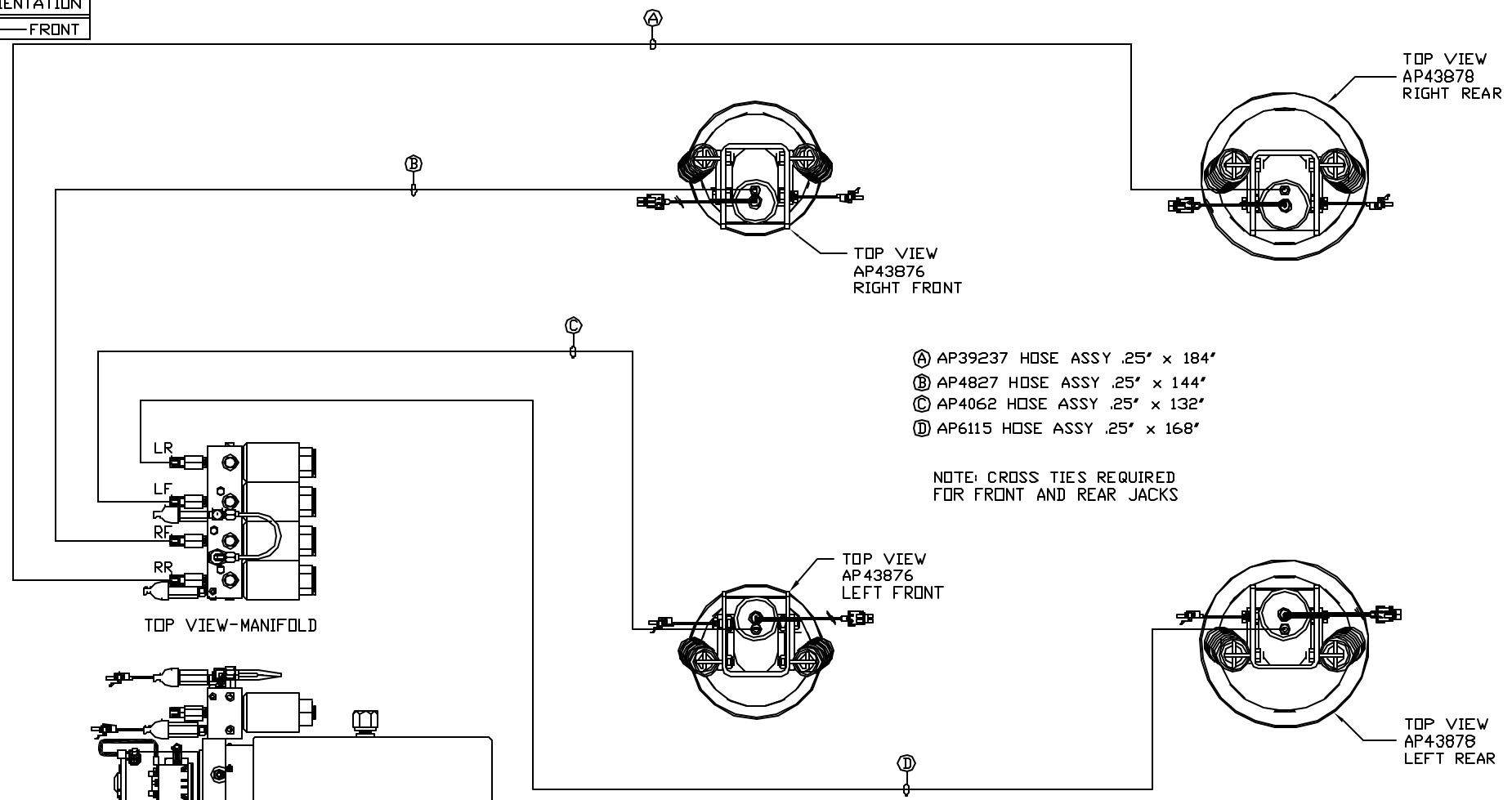


ORIENTATION  
FRONT



SIDE VIEW PUMP/MANIFOLD-AP36195

LOCATION AND ORIENTATION OF PUMP/MANIFOLD ASSEMBLY WILL DIFFER DEPENDING UPON O.E.M.

NOTE: INSTALLATION MUST CONFORM TO GOOD SHOP PRACTICES, SAE STANDARDS, RVIA STANDARDS, AND OTHER APPLICABLE STANDARDS.

LEVELING SYSTEM AP44019

- Ⓐ AP39237 HOSE ASSY .25' x 184'
- Ⓑ AP4827 HOSE ASSY .25' x 144'
- Ⓒ AP4062 HOSE ASSY .25' x 132'
- Ⓓ AP6115 HOSE ASSY .25' x 168'

NOTE: CROSS TIES REQUIRED FOR FRONT AND REAR JACKS

1	31JUL12	ADDED HOSES
NO.	DATE	REVISION
THE INFORMATION DISCLOSED ON THIS DRAWING IS CONFIDENTIAL AND MUST NOT BE DISCLOSED OR USED IN ANY MANNER WHICH WILL BE DETRIMENTAL TO THE HWH CORPORATION		

HWH		I-80 EXIT 267 SOUTH RT 1 MOSCOW, IOWA 52760	
SCALE 1:6	DATE 15JAN09	DRAWN BY .	
HYD CONN DIAGRAM			
GERLING			DRAWING NUMBER MP70107