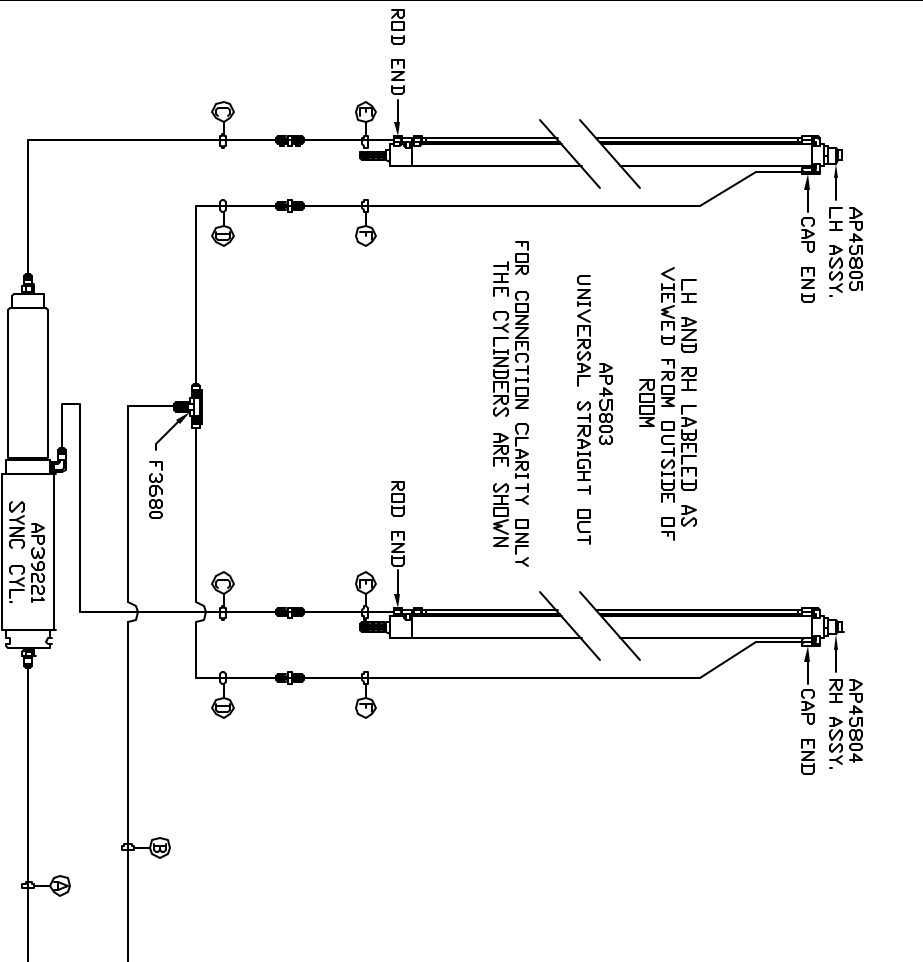


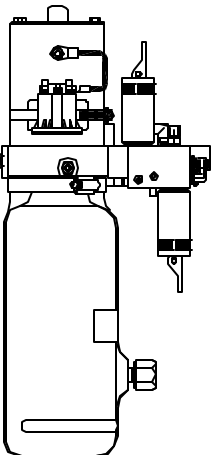
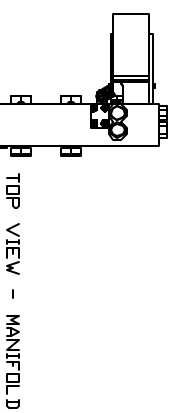
ORIENTATION  
FRONT



- Ⓐ AP4164 HOSE ASSY .25" x 384" ROD END - ALWAYS PRESSURIZED
- Ⓑ AP4391 HOSE ASSY .25" x 372" CAP END
- Ⓒ AP24632 HOSE ASSY HW402HP x 192" ROD END - ALWAYS PRESSURIZED - MUST BE HIGH PRESSURE HOSES OF EQUAL LENGTH AND DIAMETER
- Ⓓ AP4162 HOSE ASSY .25" x 192" CAP END - MUST MAINTAIN EQUAL LENGTH AND DIAMETER

- Ⓔ AP24818 HOSE ASSY HW402HP x 86" CAP END - MUST MAINTAIN EQUAL LENGTH AND DIAMETER
- Ⓕ AP24632 HOSE ASSY HW402HP x 48" ROD END - ALWAYS PRESSURIZED - MUST BE HIGH PRESSURE HOSES OF EQUAL LENGTH AND DIAMETER

NOTE: HOSES Ⓔ AND Ⓕ ARE INCLUDED WITH THE ROOM EXTENSION MECHANISM.



LOCATION AND ORIENTATION OF PUMP/MANIFOLD ASSEMBLY WILL DIFFER DEPENDING UPON DEM.

NOTE: INSTALLATION MUST CONFORM TO GOOD SHOP PRACTICES, SAE STANDARDS, RVIA STANDARDS, AND OTHER APPLICABLE STANDARDS.

CONTROL PACKAGE: AP45819

NO.	DATE	REVISION

HW H	1-80 EXIT 267 SOUTH
DATE 15FEB10	DRAWN BY .
SCALE 1:6	RT 1 MOSCOV, IDVA 52760
HYD CONN DIAGRAM	
LIGHTNIN	DRAWING NUMBER MP70223