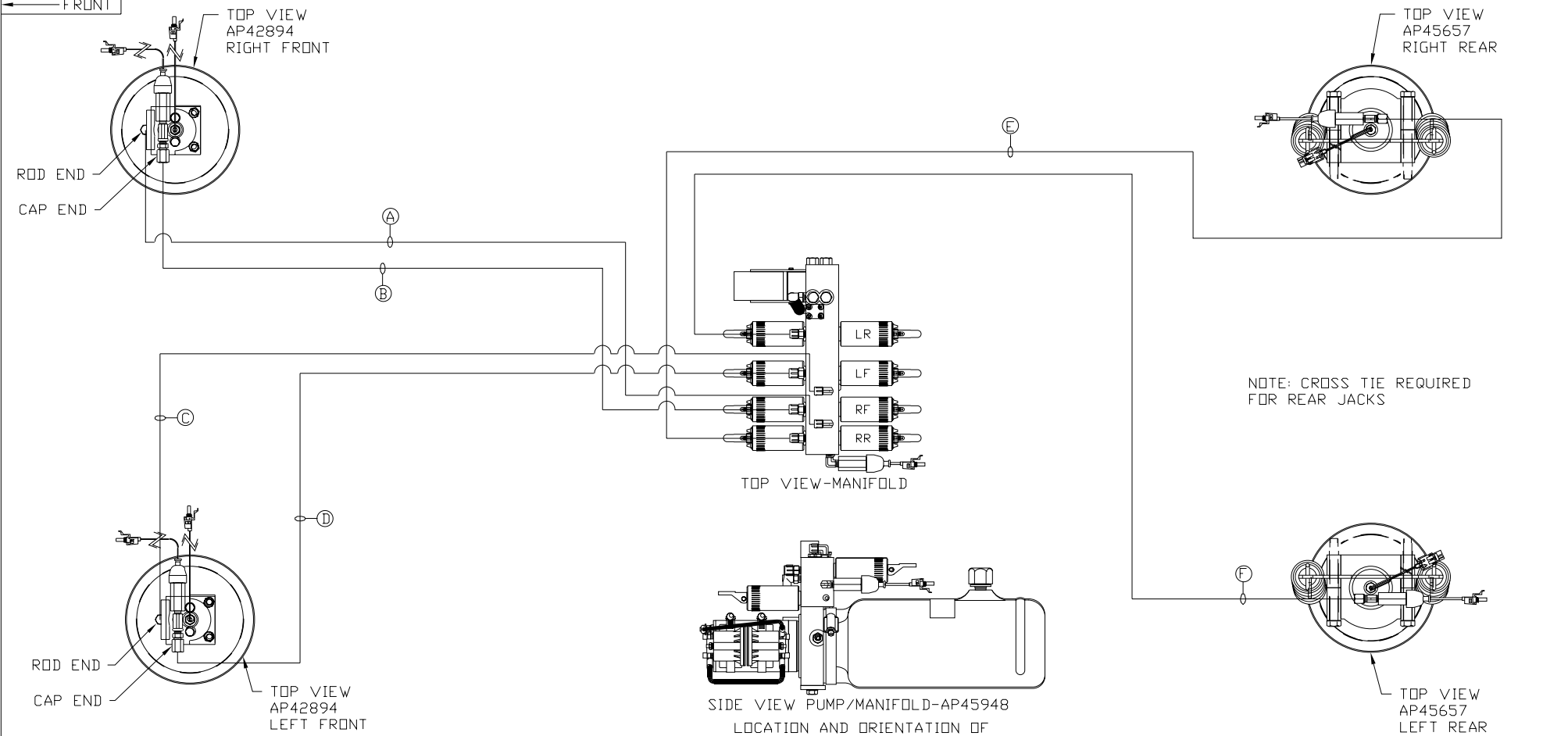


ORIENTATION

← FRONT



- Ⓐ .25" ID HOSE - RF ROD END
- Ⓑ AP45368 HOSE ASSY .25/05" x 216" - RF CAP END
- Ⓒ .25" ID HOSE - LF ROD END
- Ⓓ AP45367 HOSE ASSY .25/05" x 168" - LF CAP END
- Ⓔ .25" ID HOSE - RR CAP END
- Ⓕ .25" ID HOSE - LR CAP END

NOTE: INSTALLATION MUST CONFORM TO GOOD SHOP PRACTICES, SAE STANDARDS, RVIA STANDARDS, AND OTHER APPLICABLE STANDARDS.

LEVELING SYSTEM: AP45724

NO.	DATE	REVISION

THE INFORMATION DISCLOSED ON THIS DRAWING IS CONFIDENTIAL AND MUST NOT BE DISCLOSED OR USED IN ANY MANNER WHICH WILL BE DETRIMENTAL TO THE HWH CORPORATION

HWH I-80 EXIT 267 SOUTH
RT 1 MOSCOW, IOWA 52760

SCALE 1:6 DATE 18FEB10 DRAWN BY .

HYD CONN DIAGRAM

NEWMAR

DRAWING NUMBER
MP70231