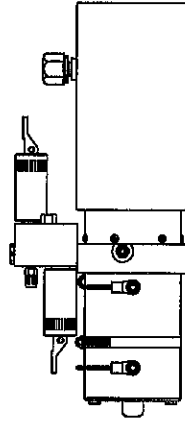
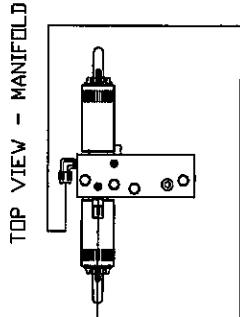
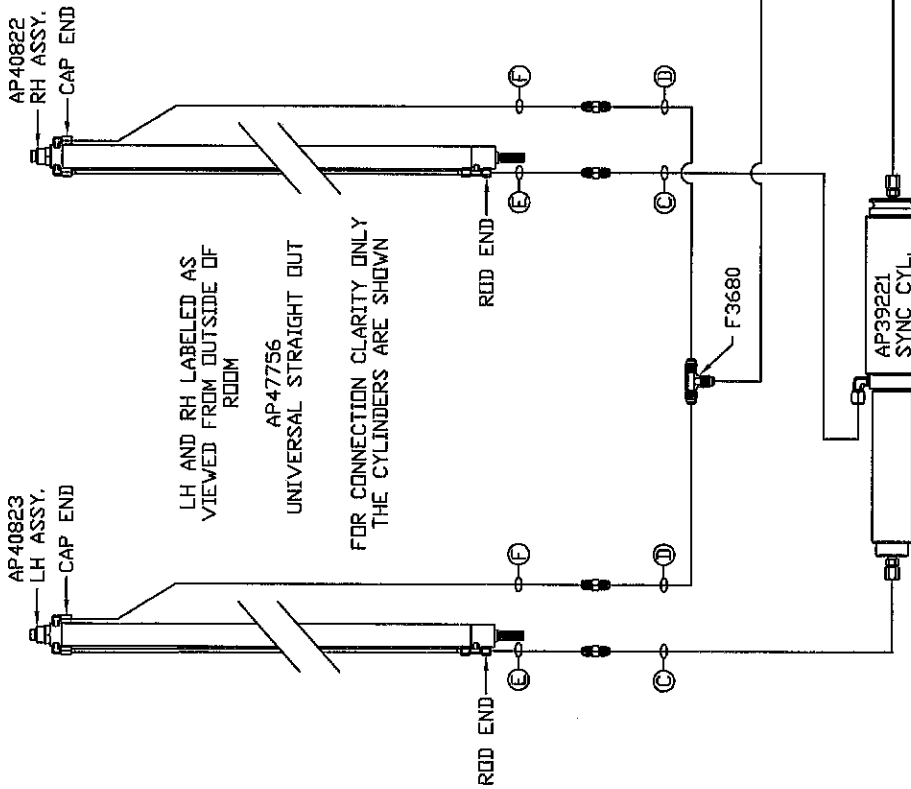


NOTE: HOSES (A) AND (C) ARE INCLUDED WITH THE ROOM EXTENSION MECHANISM.

- (A) AP24637 HOSE ASSY .25" x 66" CAP END - MUST MAINTAIN EQUAL LENGTH AND DIAMETER
- (B) AP24631 HOSE ASSY .25" x 48" ROD END - ALWAYS PRESSURIZED
- (C) AP24631 HOSE ASSY .25" x 48" CAP END
- (D) AP24661 HOSE ASSY .25" x 270" ROD END - ALWAYS PRESSURIZED - MUST BE HIGH PRESSURE HOSES OF EQUAL LENGTH AND DIAMETER
- (E) AP24661 HOSE ASSY .25" x 180" CAP END - MUST MAINTAIN EQUAL LENGTH AND DIAMETER



LOCATION AND ORIENTATION OF PUMP/MANIFOLD ASSEMBLY WILL DIFFER DEPENDING UPON O.E.M.

HWH I-80 EXIT 267 SOUTH RT 1 MOSCOW, IOWA 52760	
SCALE 1:6	DATE 15NOV11
DRAWN BY	
HYD CONN DIAGRAM	
TURN KEY IND.	
DRAWING NUMBER MP70480	

NO.	DATE	REVISION

THE INFORMATION DISCLOSED IN THIS DRAWING IS CONFIDENTIAL AND MUST NOT BE DISCLOSED OR USED IN ANY MANNER WHICH WILL BE DETRIMENTAL TO THE HWH CORPORATION

NOTE: INSTALLATION MUST CONFORM TO GOOD SHOP PRACTICES, SAE STANDARDS, RVIA STANDARDS, AND OTHER APPLICABLE STANDARDS. CONTROL PACKAGE: AP49545