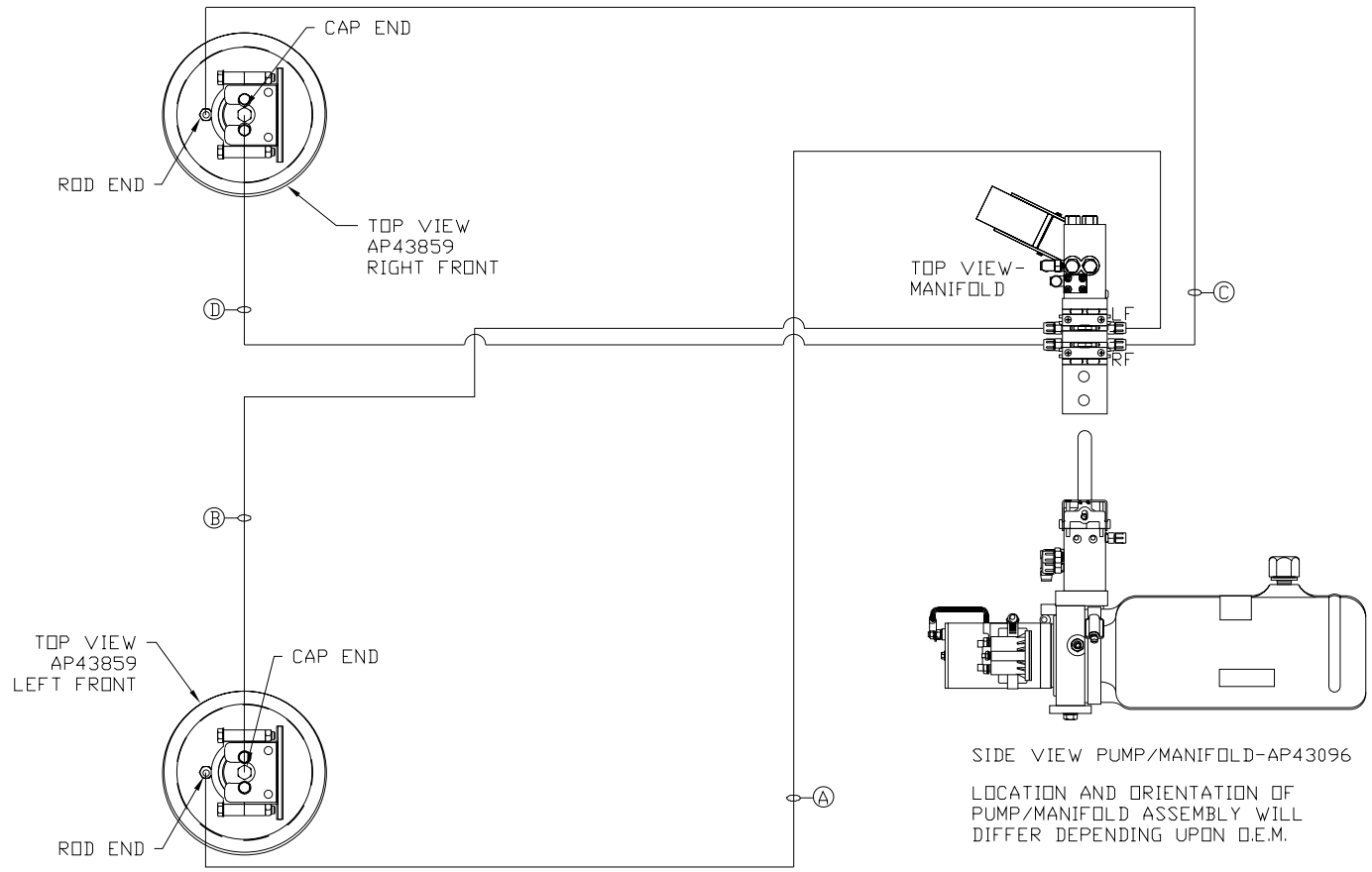


ORIENTATION

← FRONT



- Ⓐ AP34187 HOSE ASSY .25" x 588"
LEFT JACK ROD END
- Ⓑ AP46638 HOSE ASSY .25/05 x 600"
LEFT JACK CAP END
- Ⓒ AP6217 HOSE ASSY .25" x 456"
RIGHT JACK ROD END
- Ⓓ AP47474 HOSE ASSY .25/05 x 480"
RIGHT JACK CAP END

SIDE VIEW PUMP/MANIFOLD-AP43096

LOCATION AND ORIENTATION OF PUMP/MANIFOLD ASSEMBLY WILL DIFFER UPON O.E.M.

NOTE: INSTALLATION MUST CONFORM TO GOOD SHOP PRACTICES, SAE STANDARDS, RVIA STANDARDS, AND OTHER APPLICABLE STANDARDS. FW SYSTEM: AP50066

| | | | | | |
|-----|------|------------------|--------------|--|--|
| | | HWH | | I-80 EXIT 267 SOUTH RT 1 MOSCOW, IOWA 52760 | |
| | | SCALE 1:6 | DATE 05MAR12 | DRAWN BY . | |
| | | HYD CONN DIAGRAM | | | |
| NO. | DATE | REVISION | | | |
| | | PROGRESSIVE IND. | | DRAWING NUMBER MP70516 | |