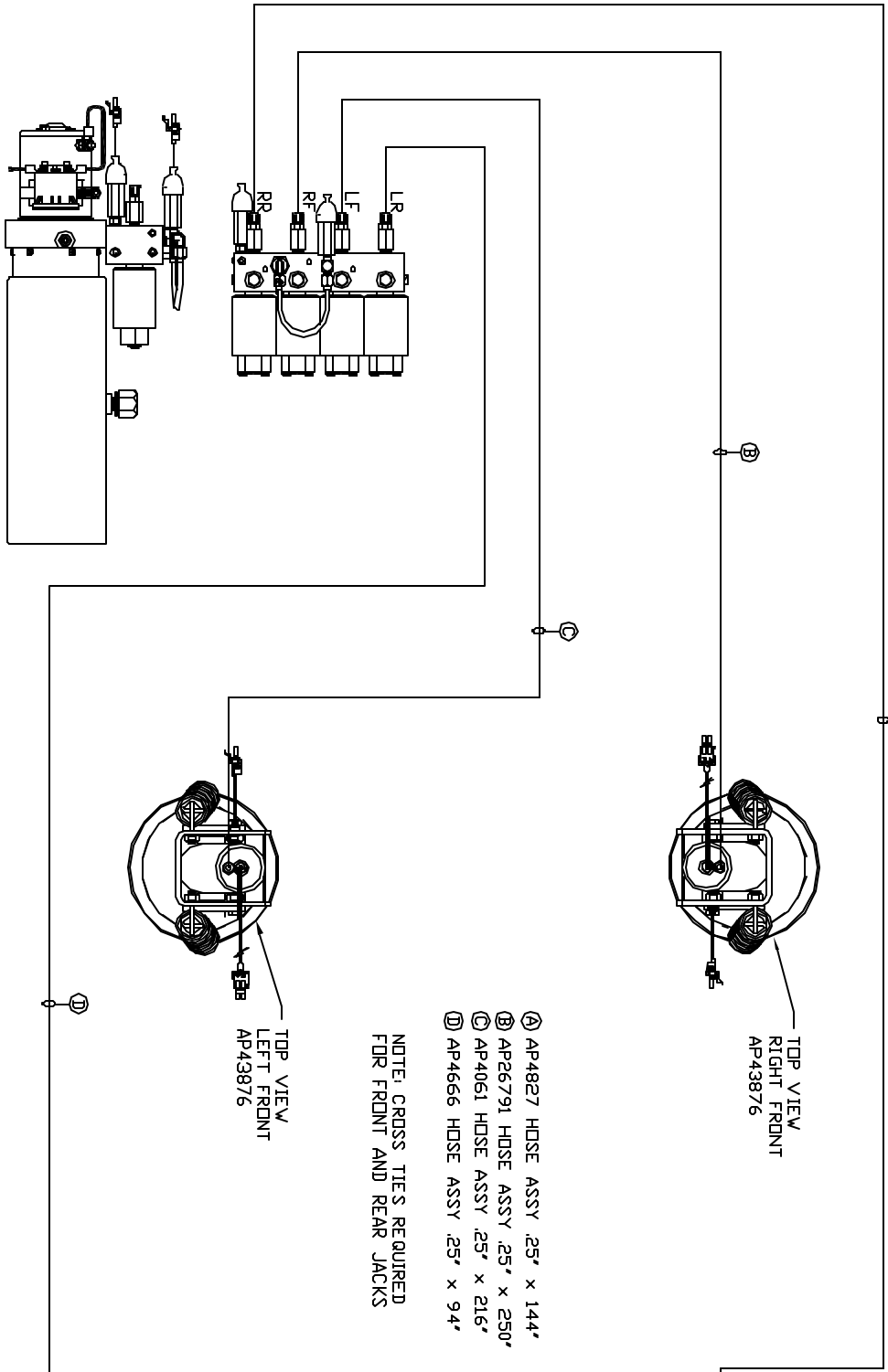


ORIENTATION  
FRONT



TOP VIEW  
RIGHT FRONT  
AP43876

TOP VIEW  
RIGHT REAR  
AP43878

TOP VIEW  
LEFT FRONT  
AP43876

TOP VIEW  
LEFT REAR  
AP43878

- Ⓐ AP4827 HOSE ASSY .25' x 144'
- Ⓑ AP26791 HOSE ASSY .25' x 250'
- Ⓒ AP4061 HOSE ASSY .25' x 216'
- Ⓓ AP4666 HOSE ASSY .25' x 94'

NOTE: CROSS TIES REQUIRED FOR FRONT AND REAR JACKS

SIDE VIEW PUMP/MANIFOLD-AP36195  
LOCATION AND ORIENTATION OF PUMP/MANIFOLD ASSEMBLY WILL DIFFER DEPENDING UPON DEM.

NOTE: INSTALLATION MUST CONFORM TO GOOD SHOP PRACTICES, SAE STANDARDS, RYLA STANDARDS, AND OTHER APPLICABLE STANDARDS.

LEVELING SYSTEM: AP50928

NO.	DATE	REVISION

**HWH** 1-80 EXT 267 SOUTH  
 RT 1 MOSCOW, IOWA 52760  
 SCALE 1:6 DATE 15AUG12 DRAWN BY .  
**HYD CONN DIAGRAM**  
 AMERICAN CUSTOM DRAWING NUMBER MP70588

THE INFORMATION DISCLOSED IN THIS DRAWING IS CONFIDENTIAL AND MUST NOT BE DISCLOSED OR USED IN ANY MANNER WHICH WILL BE DETRIMENTAL TO THE INH CORPORATION