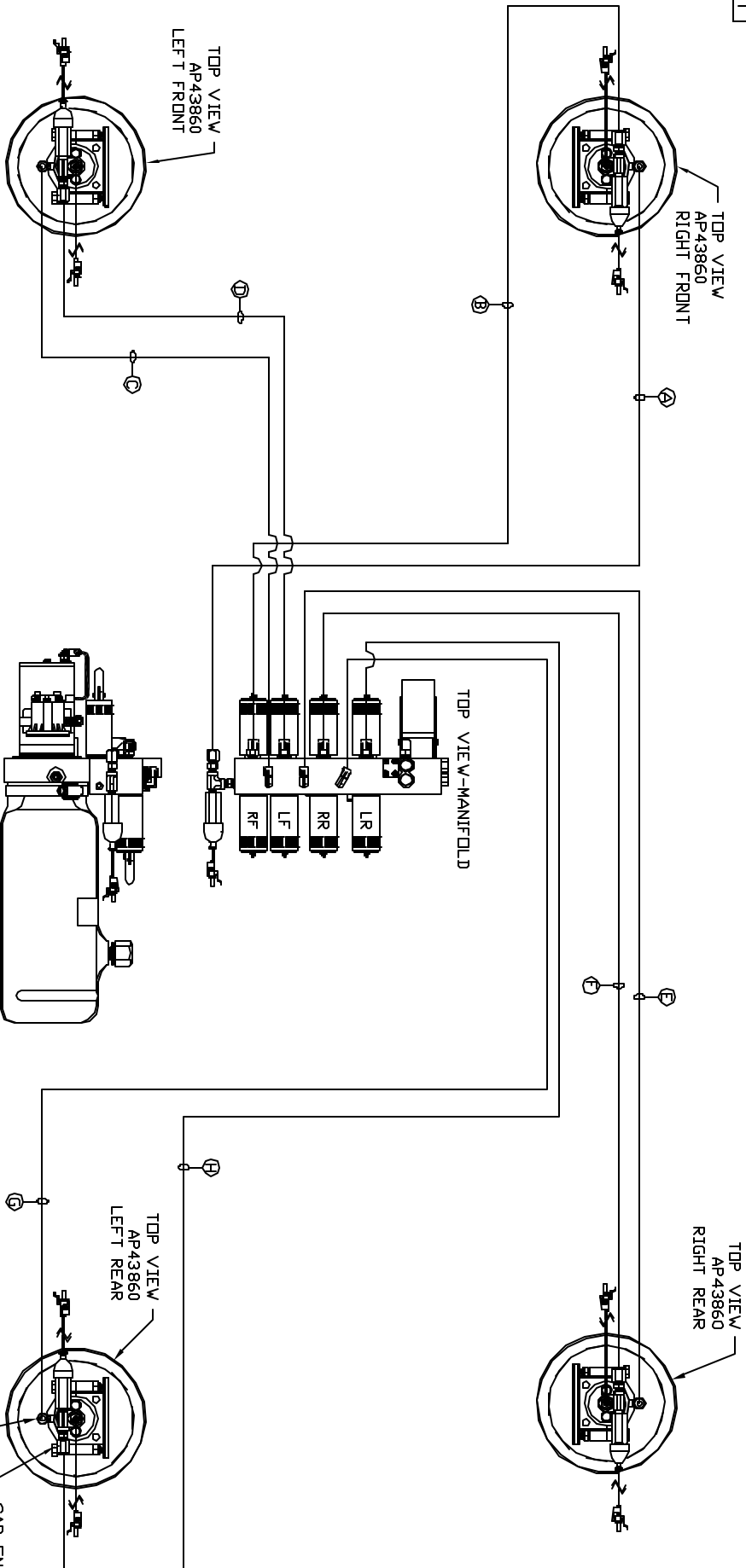


ORIENTATION  
FRONT



SIDE VIEW PUMP/MANIFOLD-AP43493  
LOCATION AND ORIENTATION OF  
PUMP/MANIFOLD ASSEMBLY WILL  
DIFFER DEPENDING UPON DEM.

- Ⓐ AP4310 HOSE ASSY .25" X 204" - RF ROD END
- Ⓑ AP43436 HOSE ASSY .25/05 X 180" - RF CAP END
- Ⓒ AP6115 HOSE ASSY .25" X 168" - LF ROD END
- Ⓓ AP44283 HOSE ASSY .25/05 X 144" - LF CAP END
- Ⓔ AP4063 HOSE ASSY .25" X 282" - RR ROD END
- Ⓕ AP45370 HOSE ASSY .25/05 X 276" - RR CAP END
- Ⓖ AP20593 HOSE ASSY .25" X 258" - LR ROD END
- Ⓗ AP43717 HOSE ASSY .25/05 X 240" - LR CAP END

NOTE: INSTALLATION MUST CONFORM TO GOOD SHOP PRACTICES, SAE STANDARDS, RYLA STANDARDS, AND OTHER APPLICABLE STANDARDS.

LEVELING SYSTEM: AP91934

NO.	DATE	REVISION

HWH 1-80 EXT 267 SOUTH  
 RT 1 MOSCOW, IOWA 52760  
 SCALE 1:6 DATE 03DCT13 DRAWN BY .  
 HYD CONN DIAGRAM  
 PROGRESSIVE IND. DRAWING NUMBER MP70666

THE INFORMATION DISCLOSED IN THIS DRAWING IS CONFIDENTIAL AND MUST NOT BE DISCLOSED OR USED IN ANY MANNER WHICH WILL BE DETRIMENTAL TO THE INH CORPORATION