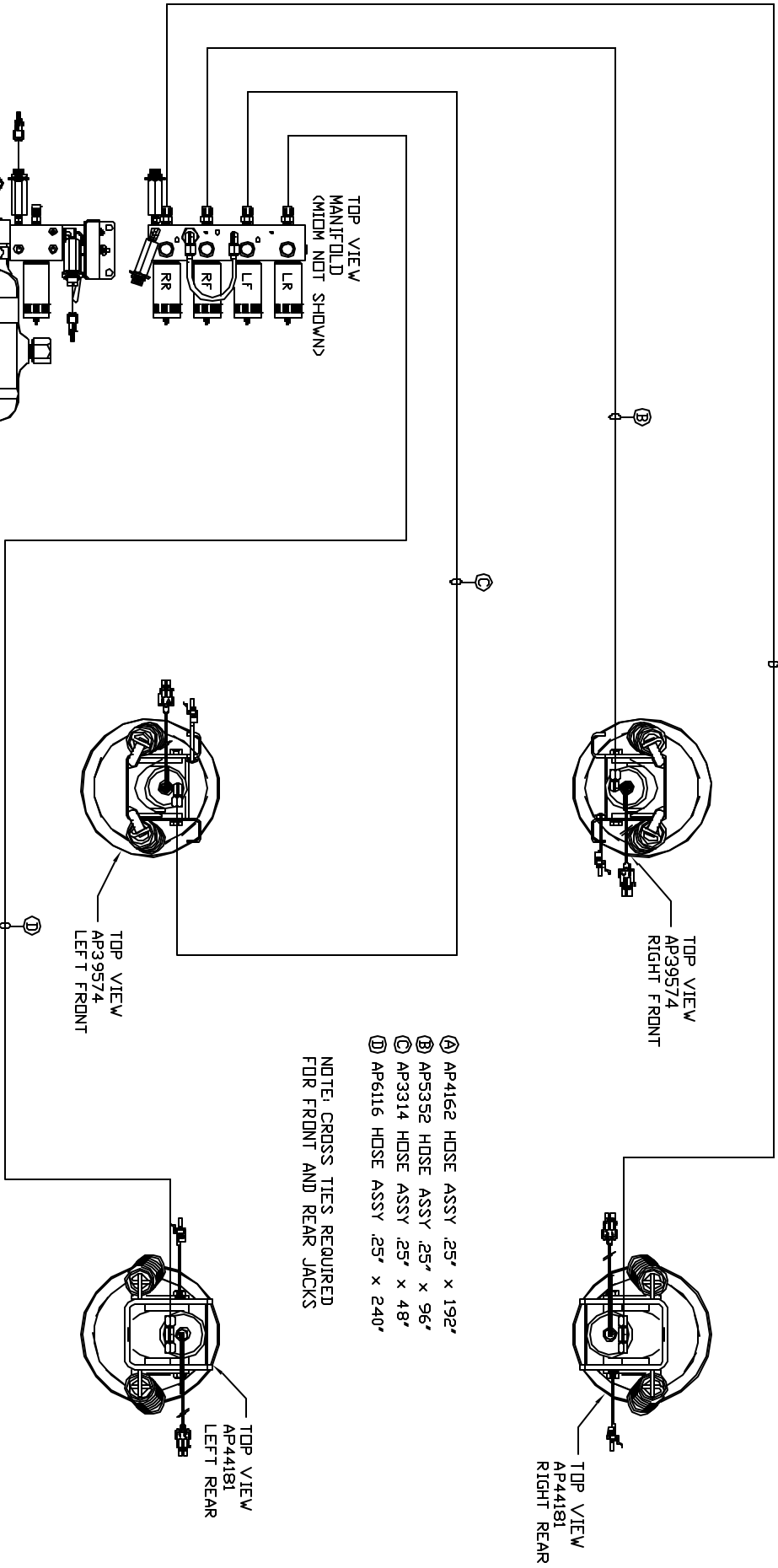


ORIENTATION
FRONT



- A AP4162 HOSE ASSY .25' x 192'
- B AP5352 HOSE ASSY .25' x 96'
- C AP3314 HOSE ASSY .25' x 48'
- D AP6116 HOSE ASSY .25' x 240'

NOTE: CROSS TIES REQUIRED FOR FRONT AND REAR JACKS

SIDE VIEW PUMP/MANIFOLD-AP47473

LOCATION AND ORIENTATION OF PUMP/MANIFOLD ASSEMBLY WILL DIFFER DEPENDING UPON DEM.

NOTE: INSTALLATION MUST CONFORM TO GOOD SHOP PRACTICES, SAE STANDARDS, RVIA STANDARDS, AND OTHER APPLICABLE STANDARDS.

LEVELING SYSTEM: AP51944

NO.	DATE	REVISION

THE INFORMATION DISCLOSED IN THIS DRAWING IS CONFIDENTIAL AND MUST NOT BE DISCLOSED OR USED IN ANY MANNER WHICH WILL BE DETRIMENTAL TO THE HVH CORPORATION

HHW 1-80 EXIT 267 SOUTH
 RT 1 MOSCOW, IOWA 52760
 SCALE 1:6 DATE 04DEC13 DRAWN BY .
HYD CONN DIAGRAM
 HOST IND. DRAWING NUMBER MP70687