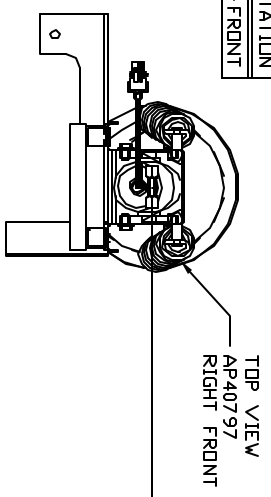
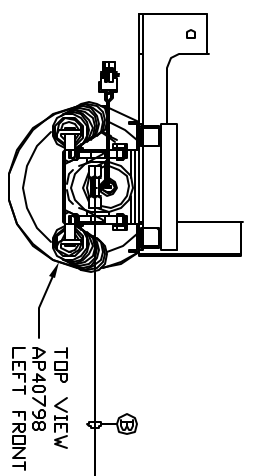


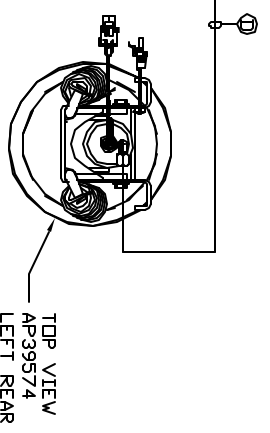
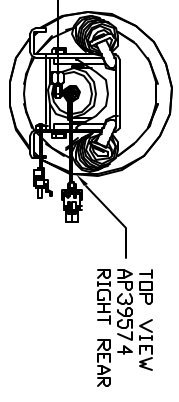
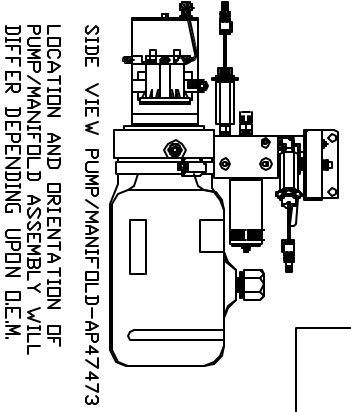
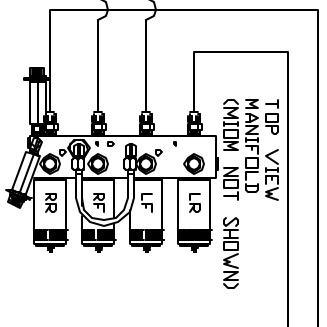
ORIENTATION
FRONT



CROSS TIE REQUIRED
FOR FRONT AND REAR JACKS.



- Ⓐ AP6115 HOSE ASSY .25" x 168"
- Ⓑ AP4061 HOSE ASSY .25" x 216"
- Ⓒ AP5562 HOSE ASSY .25" x 276"
- Ⓓ AP4064 HOSE ASSY .25" x 300"



NOTE: INSTALLATION MUST CONFORM TO GOOD SHOP PRACTICES, SAE STANDARDS, RYLA STANDARDS, AND OTHER APPLICABLE STANDARDS.

LEVELING SYSTEM: AP91988

NO.	DATE	REVISION

HWH 1-80 EXIT 267 SOUTH
 RT 1 MOSCOW, IOWA 52760
 SCALE 1:6 DATE 04DEC13 DRAWN BY .
HYD CONN DIAGRAM
GERLING
 DRAWING NUMBER MP70689

THE INFORMATION DISCLOSED IN THIS DRAWING IS CONFIDENTIAL AND MUST NOT BE DISCLOSED OR USED IN ANY MANNER WHICH WILL BE DETRIMENTAL TO THE IWH CORPORATION