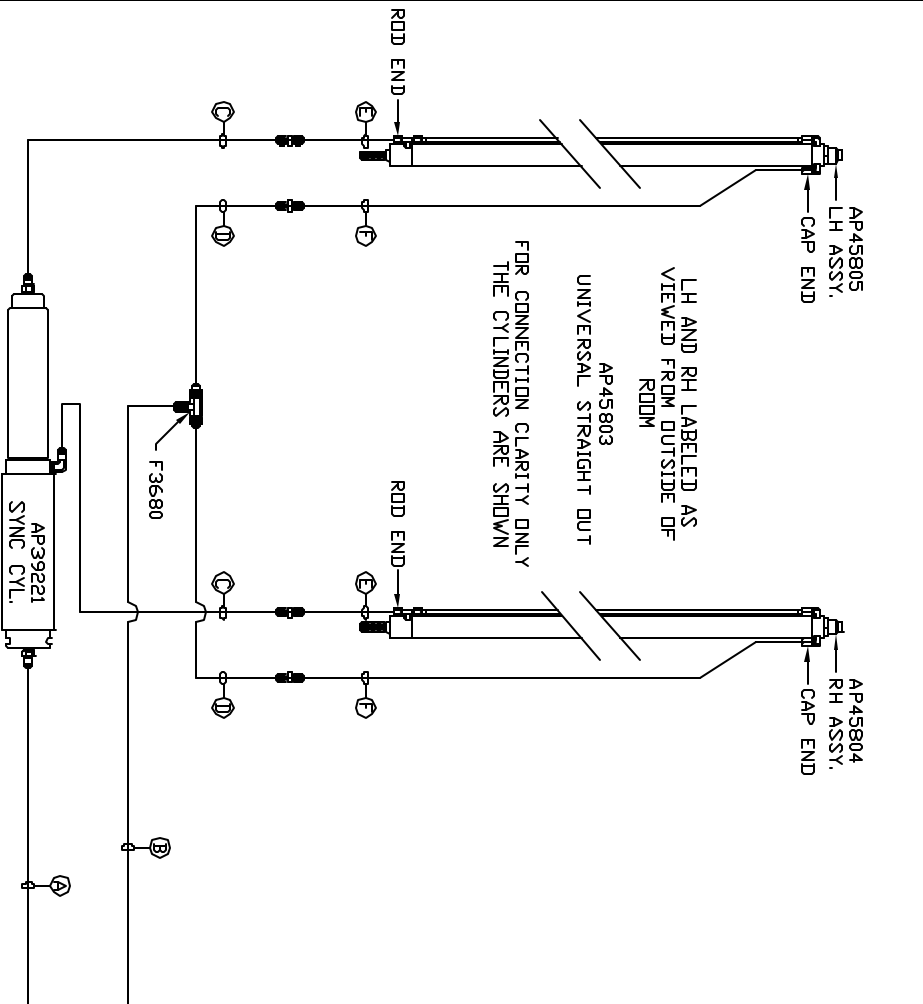


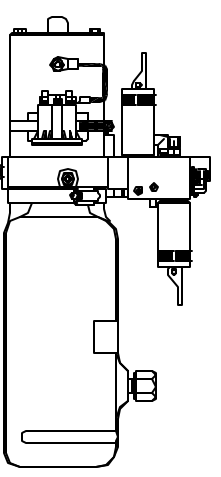
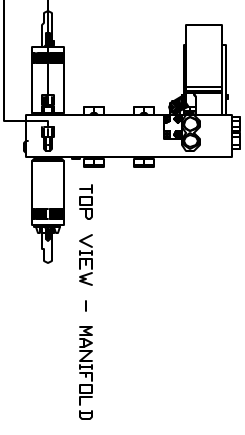
ORIENTATION
FRONT



- Ⓐ HOSE ASSY .25" ID ROD END - ALWAYS PRESSURIZED
- Ⓑ HOSE ASSY .25" ID CAP END
- Ⓒ HOSE ASSY .125" ID OR .03 ROD END - ALWAYS PRESSURIZED HOSES MUST MAINTAIN EQUAL LENGTH AND DIAMETER
- Ⓓ HOSE ASSY .25" ID CAP END - HOSES MUST MAINTAIN EQUAL LENGTH AND DIAMETER

- Ⓔ AP24632 HOSE ASSY HW/H02HP x 48' ROD END - ALWAYS PRESSURIZED - HOSES MUST MAINTAIN EQUAL LENGTH AND DIAMETER
- Ⓕ AP24818 HOSE ASSY HW/H02HP x 86' CAP END - MUST MAINTAIN EQUAL LENGTH AND DIAMETER

NOTE: HOSES Ⓐ AND Ⓒ ARE INCLUDED WITH THE ROOM EXTENSION MECHANISM



LOCATION AND ORIENTATION OF PUMP/MANIFOLD ASSEMBLY WILL DIFFER DEPENDING UPON DEM.

NOTE: INSTALLATION MUST CONFORM TO GOOD SHOP PRACTICES, SAE STANDARDS, RVIA STANDARDS, AND OTHER APPLICABLE STANDARDS.

CONTROL PACKAGE: AP52869

NO.	DATE	REVISION

HWH 1-80 EXIT 267 SOUTH
 RT 1 MOSCOW, IDVA 52760
 SCALE 1:6 DATE 11DEC13 DRAWN BY .
HYD CONN DIAGRAM
 LIGHTNIN DRAWING NUMBER MP70742