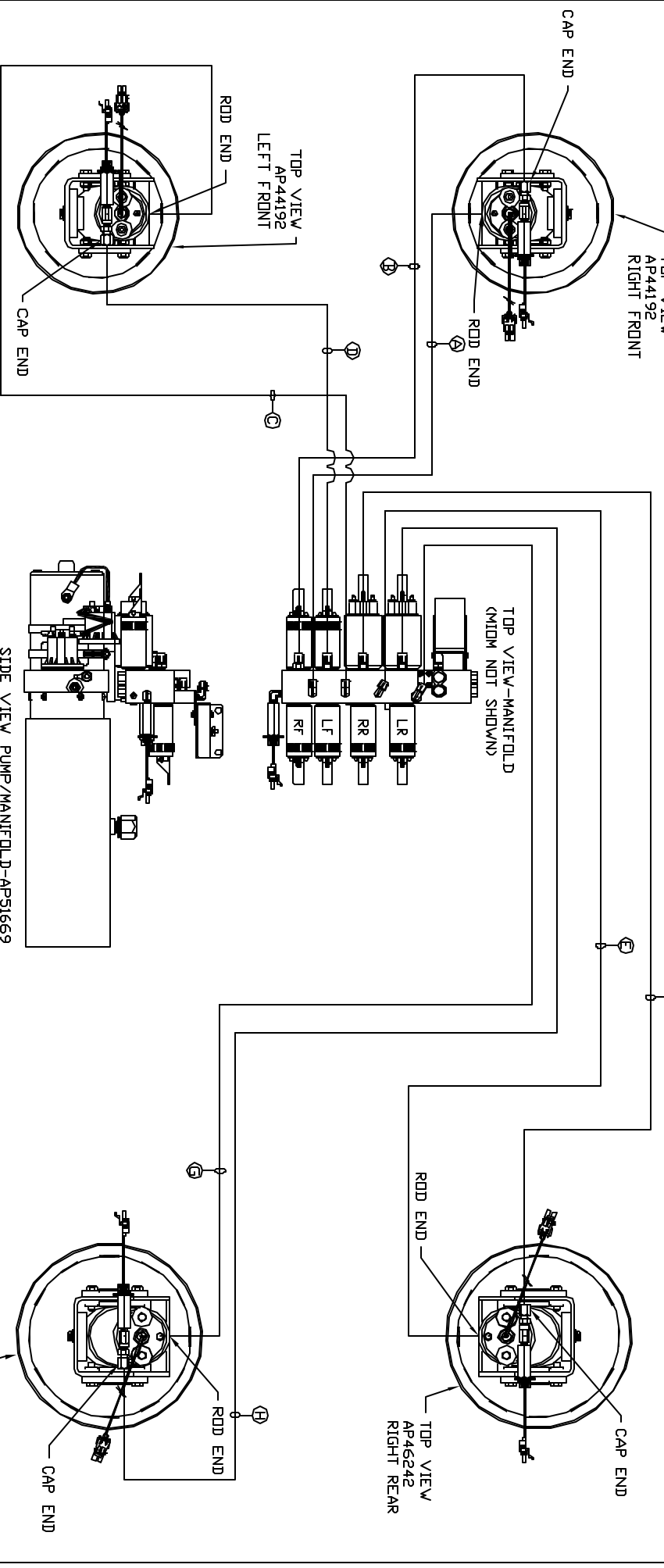


ORIENTATION
FRONT



LOCATION AND ORIENTATION OF PUMP/MANIFOLD ASSEMBLY WILL DIFFER DEPENDING UPON DEM.

- Ⓐ AP16172 HOSE ASSY 04 x 150' - RF RODD END
- Ⓑ AP44863 HOSE ASSY .25/05 x 132' - RF CAP END
- Ⓒ AP4074 HOSE ASSY 04 x 108' - LF RODD END
- Ⓓ AP45850 HOSE ASSY .25/05 x 96' - LF CAP END
- Ⓔ AP5216 HOSE ASSY 04 x 312' - RR RODD END
- Ⓕ AP45371 HOSE ASSY .25/05 x 300' - RR CAP END
- Ⓖ AP5562 HOSE ASSY 04 x 276' - LR RODD END
- Ⓗ AP45370 HOSE ASSY .25/05 x 276' - LR CAP END

NOTE: INSTALLATION MUST CONFORM TO GOOD SHOP PRACTICES, SAE STANDARDS, RVIA STANDARDS, AND OTHER APPLICABLE STANDARDS.

NO.	DATE	REVISION

THE INFORMATION DISCLOSED IN THIS DRAWING IS CONFIDENTIAL AND MUST NOT BE DISCLOSED OR USED IN ANY MANNER WHICH WILL BE DETRIMENTAL TO THE INH CORPORATION

LEVELING SYSTEM AP54466

SCALE 1:6 DATE 26NOV14 DRAWN BY .

HHW 1-80 EXT 267 SOUTH
RT 1 MOSCOV, IOWA 52760

HYD CONN DIAGRAM

PEAK DRAWING NUMBER MP70832