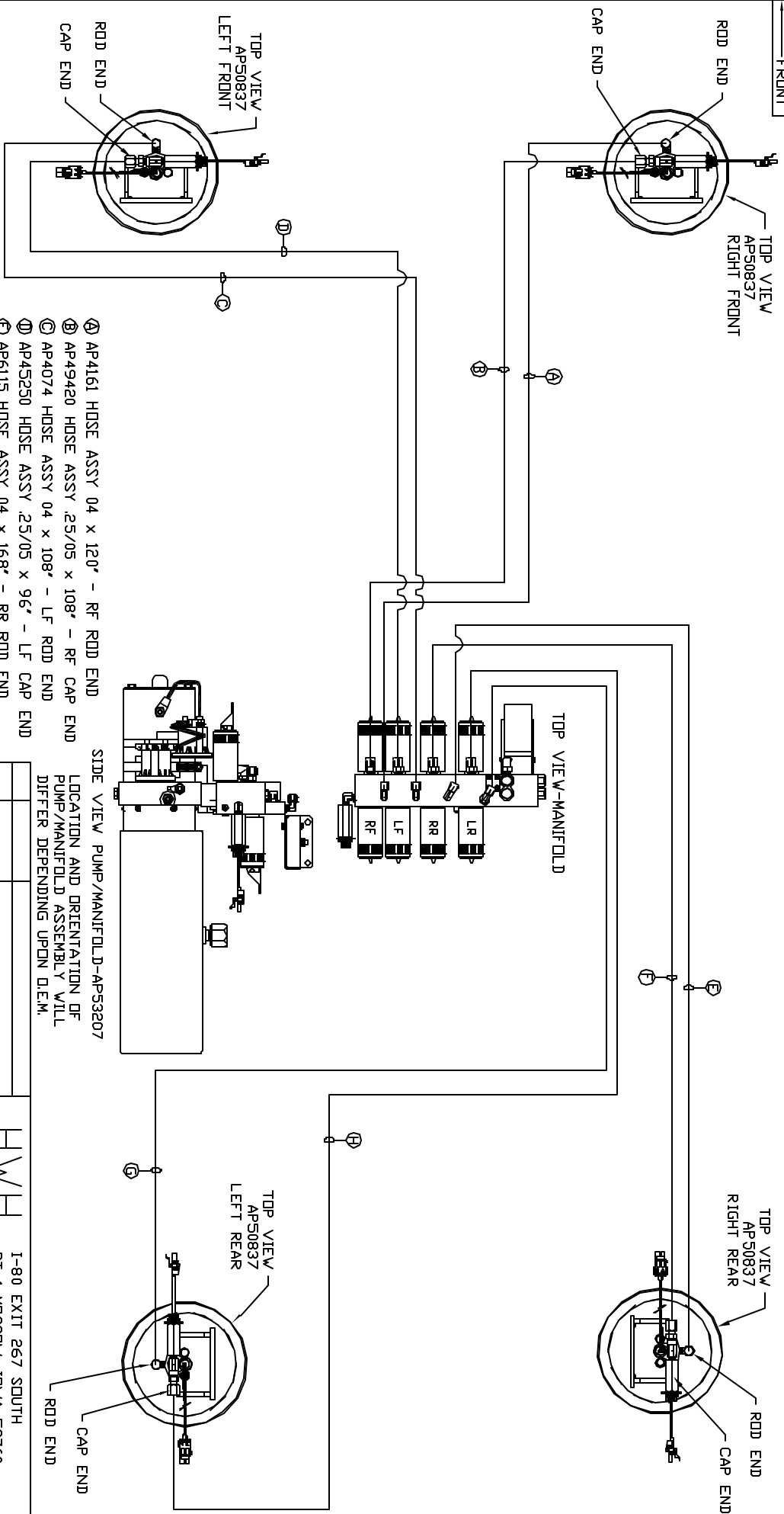


ORIENTATION  
FRONT



- ① AP4161 HOSE ASSY .04 x 120' - RF ROD END
- ② AP49420 HOSE ASSY .25/05 x 108' - RF CAP END
- ③ AP4074 HOSE ASSY .04 x 108' - LF ROD END
- ④ AP45250 HOSE ASSY .25/05 x 96' - LF CAP END
- ⑤ AP6115 HOSE ASSY .04 x 168' - RR ROD END
- ⑥ AP43404 HOSE ASSY .25/05 x 156' - RR CAP END
- ⑦ AP4065 HOSE ASSY .04 x 156' - LR ROD END
- ⑧ AP44283 HOSE ASSY .25/05 x 144' - LR CAP END

SIDE VIEW PUMP/MANIFOLD-APS3207  
LOCATION AND ORIENTATION OF PUMP/MANIFOLD ASSEMBLY WILL DIFFER DEPENDING UPON DEM.

NOTE: INSTALLATION MUST CONFORM TO GOOD SHIP PRACTICES, SAE STANDARDS, RVIA STANDARDS, AND OTHER APPLICABLE STANDARDS.

LEVELING SYSTEM: APS4564

| NO. | DATE | REVISION |
|-----|------|----------|
|     |      |          |
|     |      |          |
|     |      |          |

THE INFORMATION DISCLOSED IN THIS DRAWING IS CONFIDENTIAL AND MUST NOT BE DISCLOSED OR USED IN ANY MANNER WHICH WILL BE DETRIMENTAL TO THE IHH CORPORATION

HWH 1-80 EXT 267 SOUTH  
RT 1 MOSCOW, IDWA 52760

SCALE 1:6 DATE 15JUN15 DRAWN BY .

HYD CONN DIAGRAM

PEAK DRAWING NUMBER MP70843